

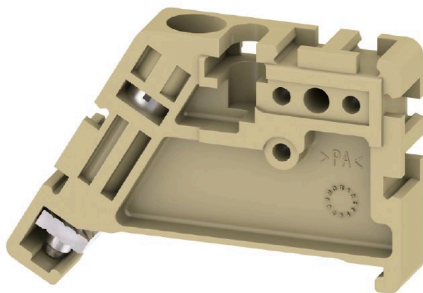
EW 35**Weidmüller Interface GmbH & Co. KG**

Klingenbergstraße 26

D-32758 Detmold

Germany

www.weidmueller.com

Product image

Weidmüller's range of products includes end brackets that guarantee a permanent, reliable mounting on the terminal rail and prevent sliding. Versions with and without screws are available. The end brackets include marking options, also for group markers, and also a test plug holder.

General ordering data

Version	End bracket, beige, TS 35, V-2, Wemid, Width: 8.5 mm, 100 °C
Order No.	0383560000
Type	EW 35
GTIN (EAN)	4008190181314
Qty.	50 items

EW 35

Weidmüller Interface GmbH & Co. KG
 Klingenbergstraße 26
 D-32758 Detmold
 Germany

www.weidmueller.com

Technical data

Approvals

ROHS	Conform
------	---------

Dimensions and weights

Depth	27 mm	Depth (inches)	1.063 inch
Height	46 mm	Height (inches)	1.811 inch
Width	8.5 mm	Width (inches)	0.3346 inch
Net weight	5.32 g		

Temperatures

Ambient temperature	-5 °C...40 °C	Continuous operating temp., min.	-50 °C
Continuous operating temp., max.	100 °C		

Environmental Product Compliance

RoHS Compliance Status	Compliant without exemption		
REACH SVHC	No SVHC above 0.1 wt%		
Product Carbon Footprint	Cradle to gate	0.044 kg CO2 eq.	

Material data

Basic material	Wemid	Colour	beige
UL 94 flammability rating	V-2		

System specifications

Version	For the terminals	Mounting rail	TS 35
---------	-------------------	---------------	-------

Additional technical data

Installation advice	Direct mounting	Type of mounting	when screwed in
Locking	for screw fixing		

Conductors for clamping (rated connection)

Tightening torque, max.	0.6 Nm	Tightening torque, min.	0.5 Nm
-------------------------	--------	-------------------------	--------

Dimensions

TS 35 offset	22.5 mm
--------------	---------

General

Installation advice	Direct mounting	Mounting rail	TS 35
---------------------	-----------------	---------------	-------

Classifications

ETIM 6.0	EC001041	ETIM 7.0	EC001041
ETIM 8.0	EC001041	ETIM 9.0	EC001041
ETIM 10.0	EC001041	ECLASS 9.0	27-14-11-35
ECLASS 9.1	27-14-11-35	ECLASS 10.0	27-14-11-35
ECLASS 11.0	27-14-11-35	ECLASS 12.0	27-14-11-35
ECLASS 13.0	27-25-03-02	ECLASS 14.0	27-25-03-02
ECLASS 15.0	27-25-03-02		