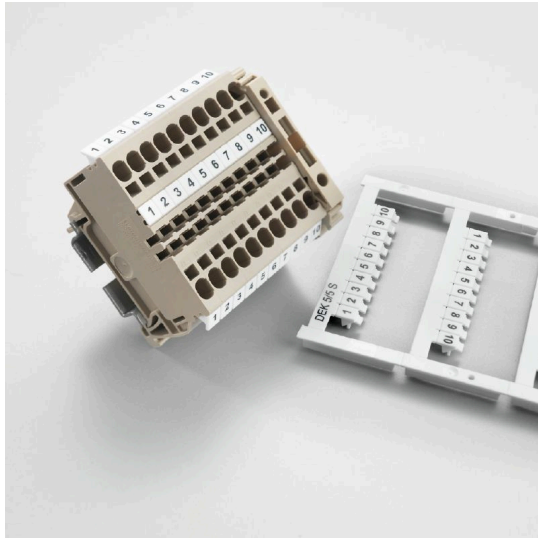


**Similar to illustration**



The dekafix (DEK) marker is the universal marker for all conductor and plug-in connectors as well as for electronic sub-assemblies. The system is ideal for short number sequences and covers a large range of ready-printed markers. Strips for fast installation in one work step. The printing is easy to read, rich in contrast, and is available in five widths.

- Large range of ready-to-use markers
- Strips for fast installation
- Terminal markers, suitable for all Weidmüller cable connectors
- Available as blank cards, MultiCard or as cards with standard printing

**General ordering data**

Version	Dekafix, Terminal marker, 5 x 5 mm, Pitch in mm (P): 5.00 Weidmueller, white
Order No.	<a href="#">0523060011</a>
Type	DEK 5 FWZ 11-20
GTIN (EAN)	4008190112219
Qty.	500 items

**DEK 5 FWZ 11-20**

**Weidmüller Interface GmbH & Co. KG**  
 Klingenbergstraße 26  
 D-32758 Detmold  
 Germany

www.weidmueller.com

**Technical data**

**Approvals**

ROHS Conform

**Dimensions and weights**

Height	5 mm	Height (inches)	0.1968 inch
Width	5 mm	Width (inches)	0.1968 inch
Net weight	0.01 g		

**Temperatures**

Operating temperature range -40...100 °C

**Environmental Product Compliance**

RoHS Compliance Status	Compliant without exemption		
REACH SVHC	No SVHC above 0.1 wt%		
Product Carbon Footprint	Cradle to gate	0.001 kg CO2 eq.	

**General data**

Material colour according to resistance code	9		
Orientation of print	horizontal		
Printing method	MC Laser		
Width	5 mm		
UL 94 flammability rating	V-2		
Operating temperature range, max.	100 °C		
Operating temperature range, min.	-40 °C		
Colour	white		
Halogen	No		
Basic material	Polyamide 66		
Colour of printing	black		
Printed characters	Numbers		
Number of markers per packaging unit	Form of supply	Card	
Number of markers per combination	1 Card = Terminal marker		
Operating temperature range	-40...100 °C		
Application/manufacturer	Weidmueller		

**Connector markers**

Pitch in mm (P) 5.00 mm

**Classifications**

ETIM 6.0	EC000761	ETIM 7.0	EC000761
ETIM 8.0	EC000761	ETIM 9.0	EC000761
ETIM 10.0	EC000761	ECLASS 9.0	27-14-11-37
ECLASS 9.1	27-14-11-37	ECLASS 10.0	27-14-11-37
ECLASS 11.0	27-28-11-01	ECLASS 12.0	27-28-11-01
ECLASS 13.0	27-28-11-01	ECLASS 14.0	27-28-11-01
ECLASS 15.0	27-28-11-01		

**DEK 5 FWZ 11-20**

**Weidmüller Interface GmbH & Co. KG**  
Klingenbergstraße 26  
D-32758 Detmold  
Germany

**Drawings**

[www.weidmueller.com](http://www.weidmueller.com)

**Similar to illustration**

