

ERME 10² SPX 4

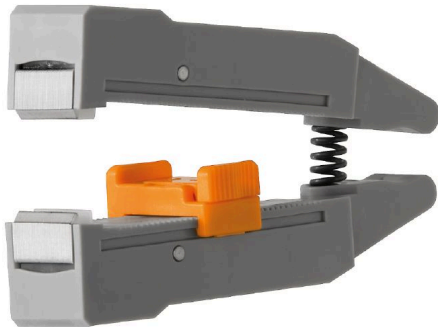
Weidmüller Interface GmbH & Co. KG

Klingenbergstraße 26

D-32758 Detmold

Germany

www.weidmueller.com



- Stripping tools with automatic self-adjustment
- For flexible and solid conductors
- Ideally suitable for mechanical and plant engineering, railway and rail traffic, wind energy, robot technology, explosion protection as well as marine, offshore and ship building sectors
- Stripping length adjustable via end stop
- Automatic opening of clamping jaws after stripping
- No fanning-out of individual conductors
- Adjustable to diverse insulation thicknesses
- Double-insulated cables in two process steps without special adjustment
- No play in self-adjusting cutting unit
- Long service life
- Optimised ergonomic design

General ordering data

Version	Accessories, Cutter holder
Order No.	1119030000
Type	ERME 10 ² SPX 4
GTIN (EAN)	4032248948420
Qty.	1 items

ERME 10² SPX 4

Weidmüller Interface GmbH & Co. KG
 Klingenbergstraße 26
 D-32758 Detmold
 Germany

www.weidmueller.com

Technical data

Dimensions and weights

Depth	11.2 mm	Depth (inches)	0.4409 inch
Height	23 mm	Height (inches)	0.9055 inch
Width	52 mm	Width (inches)	2.0472 inch
Length	52 mm	Length (inches)	2.0472 inch
Net weight	25.6 g		

Environmental Product Compliance

RoHS Compliance Status	Not affected
REACH SVHC	No SVHC above 0.1 wt%

Technical data

Description of article	Blade head for Stripax 10
------------------------	---------------------------

Stripping tools

Colour	grey	Conductor cross-section, max.	10 mm ²
Conductor cross-section, min.	0.08 mm ²		

Classifications

ETIM 6.0	EC001509	ETIM 7.0	EC001509
ETIM 8.0	EC001509	ETIM 9.0	EC001509
ETIM 10.0	EC001509	ECLASS 9.0	21-04-92-37
ECLASS 9.1	21-01-90-90	ECLASS 10.0	21-04-92-37
ECLASS 11.0	21-04-48-91	ECLASS 12.0	21-04-48-91
ECLASS 13.0	21-04-48-91	ECLASS 14.0	21-04-48-91
ECLASS 15.0	21-04-48-91		