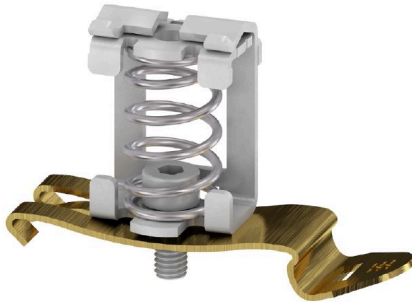


## KLBUE 3-8 FM4

**Weidmüller Interface GmbH & Co. KG**  
Klingenbergstraße 26  
D-32758 Detmold  
Germany

[www.weidmueller.com](http://www.weidmueller.com)



Thanks to special mounting feet, the product portfolio also includes shield clamping saddles that can be mounted on the TS 35 DIN rail. The shield is diverted from the shield clamping saddles via the mounting foot to the TS 35 mounting rail and thus to PE (ground).

### General ordering data

Version	Clamping yoke, Clamping yoke for shield connection
Order No.	<a href="#">1252530000</a>
Type	KLBUE 3-8 FM4
GTIN (EAN)	4032248112531
Qty.	10 items

## KLBUE 3-8 FM4

Weidmüller Interface GmbH &amp; Co. KG

Klingenbergstraße 26  
D-32758 Detmold  
Germany

[www.weidmueller.com](http://www.weidmueller.com)

## Technical data

### Approvals

ROHS	Conform
------	---------

### Dimensions and weights

Depth	26 mm	Depth (inches)	1.0236 inch
Height	50 mm	Height (inches)	1.9685 inch
Width	14.5 mm	Width (inches)	0.5709 inch
Net weight	15.14 g		

### Temperatures

Storage temperature	-25 °C...55 °C	Ambient temperature	-5 °C...40 °C
Continuous operating temp., min.	-60 °C	Continuous operating temp., max.	130 °C

### Environmental Product Compliance

RoHS Compliance Status	Compliant without exemption		
REACH SVHC	No SVHC above 0.1 wt%		
Product Carbon Footprint	Cradle to gate	0.069 kg CO2 eq.	

### Material data

Colour	silver	UL 94 flammability rating	None
--------	--------	---------------------------	------

### System specifications

End cover plate required	No	Mounting rail	TS 35
--------------------------	----	---------------	-------

### Additional technical data

Installation advice	TS 35	Explosion-tested version	No
Type of mounting	Snap-on		

### Conductors for clamping (rated connection)

Stripping length	18 mm	Type of connection	Spring connection
Cable diameter, max.	8 mm	Cable diameter, min.	3 mm
Connection cross-section, stranded, max.	8 mm <sup>2</sup>	Connection cross-section, stranded, min.	3 mm <sup>2</sup>

### General

Installation advice	TS 35	Mounting rail	TS 35
---------------------	-------	---------------	-------

### Rating data

Rated cross-section	8 mm <sup>2</sup>
---------------------	-------------------

### Classifications

ETIM 6.0	EC002020	ETIM 7.0	EC002020
ETIM 8.0	EC002020	ETIM 9.0	EC002020
ETIM 10.0	EC002020	ECLASS 9.0	27-14-11-50
ECLASS 9.1	27-14-11-50	ECLASS 10.0	27-14-11-50

### Technical data

ECLASS 11.0	27-14-11-50	ECLASS 12.0	27-14-11-50
ECLASS 13.0	27-25-01-20	ECLASS 14.0	27-25-01-20
ECLASS 15.0	27-25-01-20		