

# WAP/KEW acces. vacs, health & Safety

---

Model:  
Accessories ALTO vacs

ACCESSORIES

Stykliste Dansk

05-04-2011

# Indholdsfortegnelse

WAP/KEW acces. vacs, health & Safety

<b>Suction heads WD and WDC</b>	<b>3</b>
<b>Fix tool and multi-purpose tool, WD70 / WD90</b>	<b>5</b>
<b>Carpet- and upholstery tool, WDC - HobbyVac</b>	<b>7</b>
<b>Tubes WD and WDC</b>	<b>9</b>
<b>Hoses WD and WDC</b>	<b>11</b>
<b>Dust bags and filters WD/WDC</b>	<b>13</b>
<b>WD70-40, WD40-40 accessories - from 01. sep. 2000</b>	<b>15</b>
<b>Airbox 2010</b>	<b>17</b>
<b>Airbox</b>	<b>19</b>
<b>System 22 (ATTIX)</b>	<b>21</b>
<b>System 32 and 27 (ATTIX)</b>	<b>23</b>
<b>System 36 (ATTIX)</b>	<b>26</b>
<b>System 38 (ATTIX)</b>	<b>28</b>
<b>System 50 (ATTIX)</b>	<b>30</b>
<b>System 36 (2) (ATTIX)</b>	<b>32</b>
<b>Accessory Sets 1 - (except for type 22)</b>	<b>34</b>
<b>Accessory Sets 2 - (except for type 22)</b>	<b>36</b>
<b>Large fixed floor nozzle</b>	<b>38</b>
<b>Large fixed floor nozzle 2</b>	<b>40</b>
<b>Turbo Nozzle</b>	<b>42</b>

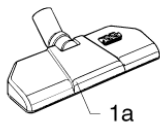
# Suction heads WD and WDC

WAP/KEW acces. vacs, health & Safety

05-04-2011

StyMiste ID  
ACCESWD02

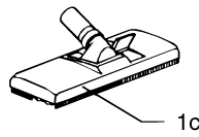
3



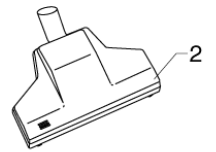
1a



1b



1c

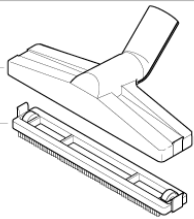


2

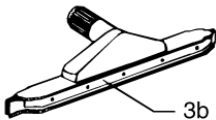
NEW

3

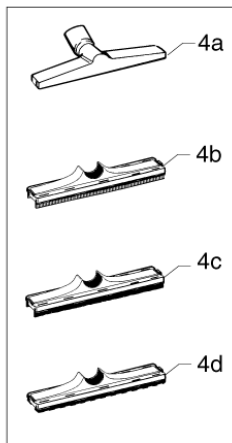
3a



OLD



3b



4a

4b

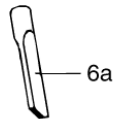
4c

4d

4



5



6a



6b



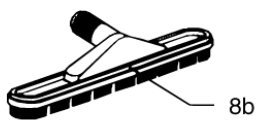
6c



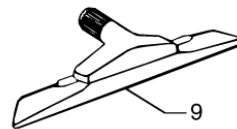
7



8a



8b



9



10

# Suction heads WD and WDC

WAP/KEW acces. vacs, health & Safety

05-04-2011

StyMiste ID  
ACCESWD02

4

Pos	Vare nr.	Ant	Beskrivelse		EAN
2	54118	1	TURBINE-MUNDSTYKKE Ø36	i36	4005337541
3	7090904	1	VÅDSUGNINGSMUNDSTYKKE WD	i36	5701715006
5	5146	1	BØRSTE Ø36	i36	4005337051
7	7090928	1	OVERGANGSSTYKKE WD 40	i40/i36	5701715108
9	7090935	1	TÆPPEMUNDSTYKKE 420 MM	i40	5701715009
10	7090903	1	POLSTERMUNDSTYKKE WD30	i40/i36	5701715006
1A	8046	1	KOMBIMUNDSTYKKE, PLAST Ø36 270MM	i36	4005337080
1B	8046	1	KOMBIMUNDSTYKKE, PLAST Ø36 270MM	WDC	4005337080
3A	7090834	1	GUMMISKINNE L=395	i40	5701715006
3B	7090936	1	GUMMISKINNE	i40	5701715123
4A	8046	1	KOMBIMUNDSTYKKE, PLAST Ø36 270MM	i40	4005337080
4B	7090920	1	VÅDSUGNINGSA DAPTOR	i36	5701715116
4C	7090919	1	BØRSTEA DAPTOR, COMBI	i36	5701715116
4D	8046	1	KOMBIMUNDSTYKKE, PLAST Ø36 270MM	i36	4005337080
6A	7090902	1	FUGEMUNDSTYKKE	i36	5701715006
6B	7090927	1	FUGEMUNDSTYKKE WD 40	i40	5701715007
6C	7090820	1	FUGEMUNDSTYKKE Ø58	i50	5701715006
8A	7090929	1	BØRSTEMUNDSTYKKE Ø32 WD	i36	5701715108
8B	7090925	1	TØRSUGNINGSMUNDSTYKKE WD	i40	5701715009
1AA	7091048	1	RING	i36	5701715264

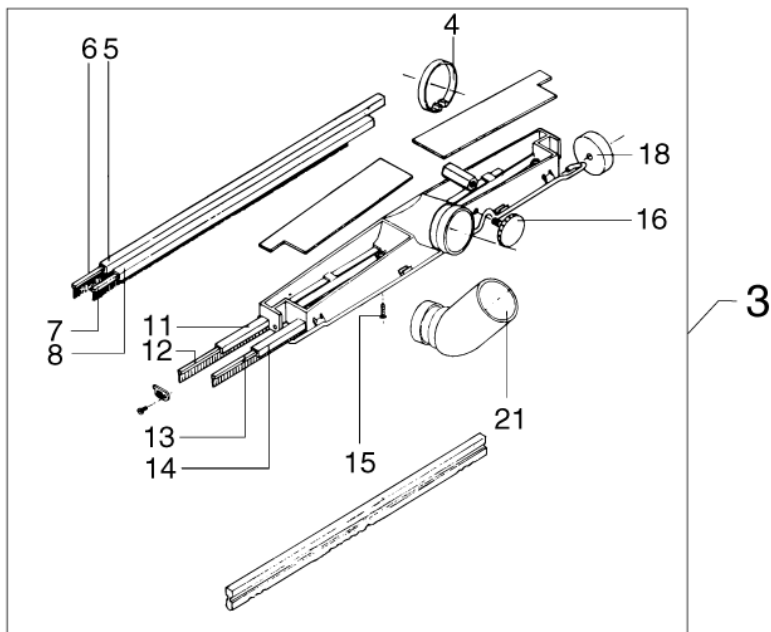
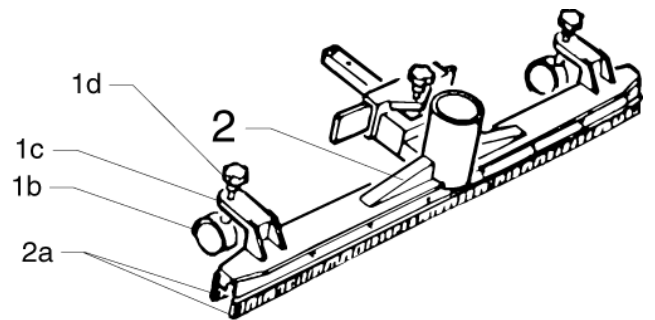
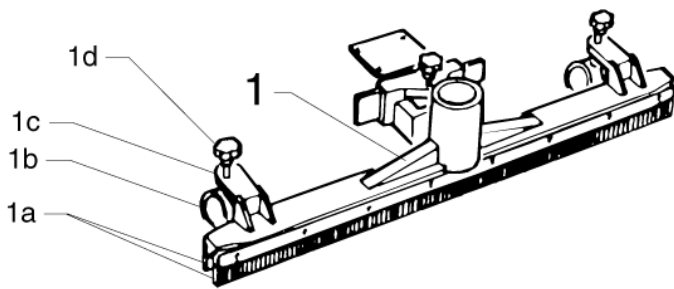
# Fix tool and multi-purpose tool, WD70 / WD9

WAP/KEW acces. vacs, health & Safety

05-04-2011

StyMiste ID  
ACCESWD04

5



# Fix tool and multi-purpose tool, WD70 / WD9

WAP/KEW acces. vacs, health & Safety

05-04-2011

StyMiste ID  
ACCESWD04

6

Pos	Vare nr.	Ant	Beskrivelse		EAN
1	7090811	1	KØREMUNDSTYKKE WD70 VÅD	WD70, WD90	5701715006
2	7090812	1	KØREMUNDSTYKKE WD70 TØR	WD70, WD90	5701715006
3	7090821	1	COMBIMUNDSTYKKE 450 MM	WD70	5701715107
15	7090835	1	SKRUE M 5X20	WD70	5701715107
16	7090836	1	FINGERSKRUE M8 X 25	WD70	5701715107
18	7090838	1	HJUL F COMBIMUNDSTYKKE	WD70	5701715107
1A	7090815	1	GUMMILÆBER (2 STK.)	WD70, WD90	5701715006
1B	7090819	1	HJUL F. KØREMUNDSTYKKE	WD70, WD90	5701715122
1C		1	NOTE COMMENT	WD70, WD90	5701715456
1D		1	NOTE COMMENT	WD70, WD90	5701715456
21	7090842	1	DREJELED F COMBIMUNDSTYK.	WD70	5701715107
2A	7090814	1	BØRSTELÆBER	WD70, WD90	5701715006
2B	7090819	1	HJUL F. KØREMUNDSTYKKE	WD70, WD90	5701715122
2C		1	NOTE COMMENT	WD70, WD90	5701715456
2D		1	NOTE COMMENT	WD70, WD90	5701715456
5-6	7090829	1	BØRSTESKINNE L=440	WD70	5701715006
7-8	7090830	1	BØRSTESKINNE L=395	WD70	5701715006
11-	7090833	1	GUMMISKINNE L=440	WD70	5701715006
13-	7090834	1	GUMMISKINNE L=395	WD70	5701715006

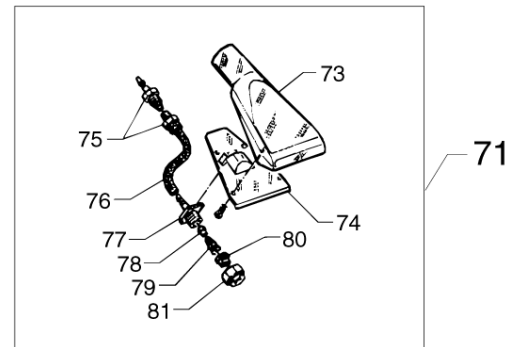
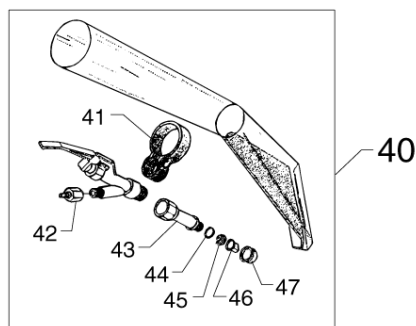
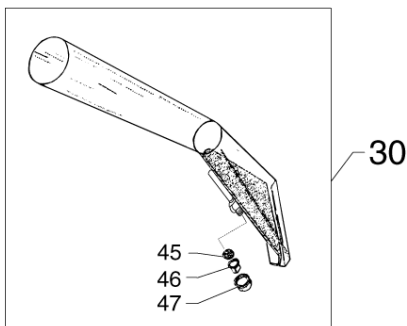
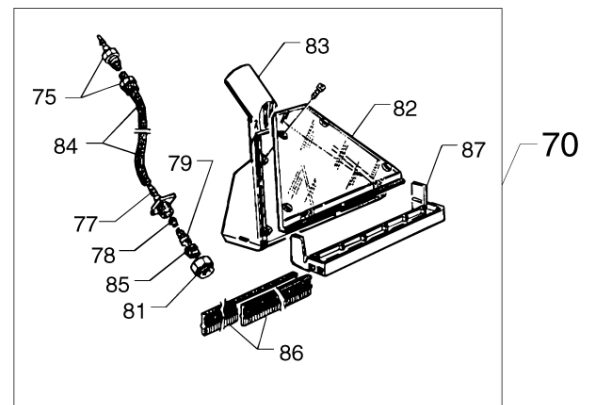
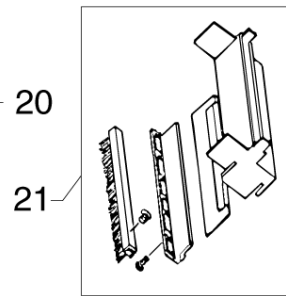
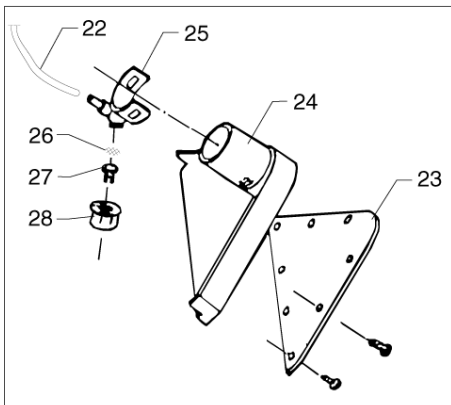
# Carpet- and upholstery tool, WDC - HobbyVa

WAP/KEW acces. vacs, health & Safety

05-04-2011

StyMiste ID  
ACCESWD06

7



# Carpet- and upholstery tool, WDC - HobbyVa

WAP/KEW acces. vacs, health & Safety

05-04-2011

StyMiste ID  
ACCESWD06

8

Pos	Vare nr.	Ant	Beskrivelse		EAN
20	7090840	1	TÆPPERENSEMUNDSTYKKE WDC	WDC30, WDC40	5701715107
21	7090841	1	VÅDSUGNINGSADAPTOR WDC	WDC30, WDC40	5701715006
22	7090869	1	HOSE 8X5, L 1090	WDC30, WDC40	5701715122
23	7090863	1	COVER FOR CLEANING TOOL	WDC30, WDC40	5701715136
24	7090862	1	CARPET CLEANING TOOL, WDC	WDC30, WDC40	5701715116
25	7090865	1	DYSEHOLDER F. WDC	WDC30, WDC40	5701715118
26	7090861	1	FILTER F.POLSTERMUNDSTYK.	WDC30, WDC40	5701715116
27	7090785	1	DYSE, RØD	WDC30, WDC40	5701715006
28	7090864	1	NOZZLE CAP 3/8 WDC	WDC30, WDC40	5701715118
41	7090868	1	HOLDER FOR GREB	WDC30, WDC40	5701715117
42	7090870	1	QUICKKOBLING	WDC30, WDC40	5701715115
43	7090867	1	FORLÆNGERSTYKKE 3/8-1/4"	WDC30, WDC40	5701715117
44	7090866	1	WASHER 15X9,5X1,5	WDC30, WDC40	5701715118
45	7090861	1	FILTER F.POLSTERMUNDSTYK.	WDC30, WDC40	5701715116
46	7090780	1	DYSE, ORANGE	WDC30, WDC40	5701715006
70	7090790	1	TÆPPERENSEMUNDSTYKKE	HOBBYVAC	5701715008
71	7090791	1	POLSTERRESEMUNDSTYKKE	HOBBYVAC	5701715005
73	7090773	1	POLSTER-RESEMUNDSTYKKE	HOBBYVAC	5701715006
74	7090774	1	MUNDSTYKKEDÆKPLADE LILLE	HOBBYVAC	5701715006
75	7090775	1	KOBLING	HOBBYVAC	5701715006
76	7090776	1	SLANGE 85 MM.	HOBBYVAC	5701715006
77	7090777	1	DYSEHUS	HOBBYVAC	5701715006
78	7090778	1	ANTIDRYP GUMMI	HOBBYVAC	5701715006
79	7090779	1	FJEDER	HOBBYVAC	5701715006
80	7090780	1	DYSE, ORANGE	HOBBYVAC	5701715006
81	7090781	1	GEVINDBØSNING	HOBBYVAC	5701715006
82	7090782	1	MUNDSTYKKEDÆKPLADE STOR	HOBBYVAC	5701715006
83	7090783	1	TÆPPERENSEMUNDSTYKKE	HOBBYVAC	5701715006
84	7090784	1	SLANGE 980 MM.	HOBBYVAC	5701715006
85	7090785	1	DYSE, RØD	HOBBYVAC	5701715006
86	7090786	1	GUMMISKINNER	HOBBYVAC	5701715006
87	7090787	1	VÅDSUGNINGSADAPTOR	HOBBYVAC	5701715107

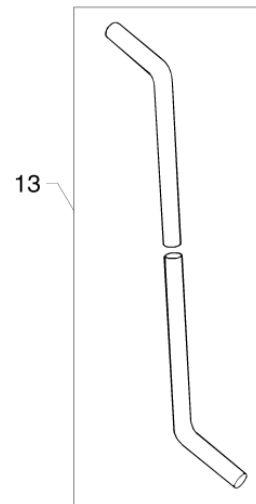
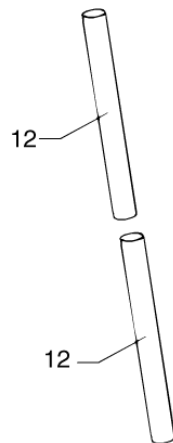
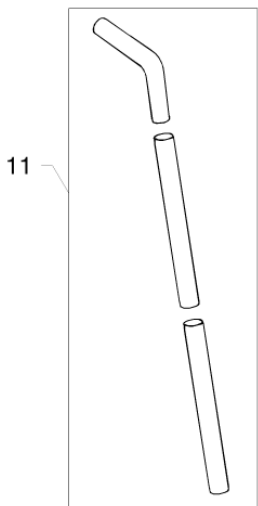
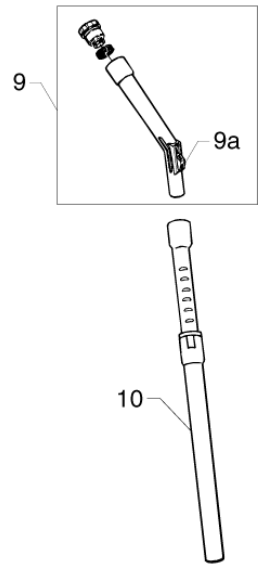
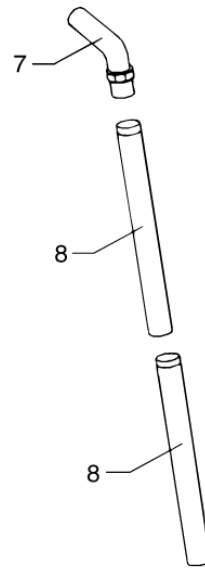
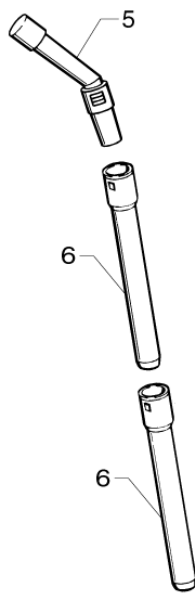
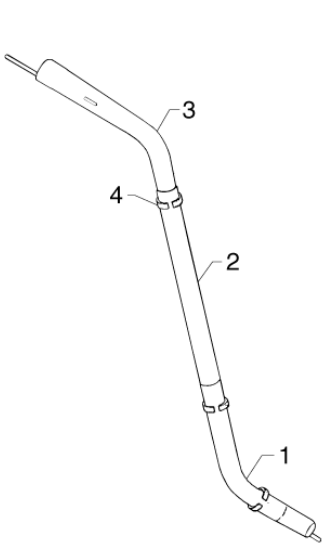
# Tubes WD and WDC

WAP/KEW acces. vacs, health & Safety

05-04-2011

StyMiste ID  
ACCESWD08

9



# Tubes WD and WDC

WAP/KEW acces. vacs, health & Safety

05-04-2011

StyMiste ID  
ACCESWD08

10

Pos	Vare nr.	Ant	Beskrivelse		EAN
1	7090845	1	RØRBØJNING WDC 30 Ø36	WDC30	5701715107
2	7090844	1	ALUMINIUMSRØR WDC 30-11	WDC30	5701715107
3	7090871	1	RØRBØJNING	WDC30, WDC40	5701715116
4	7090847	1	SLANGEHOLDER WDC 30-11	WDC30	5701715006
5	7090885	1	HÅNDTAG M/SUGEREGULERING	ī36	5701715006
6	7090906	1	FORLÆNGERRØR 0,5 M KROM	WET&DRY, HOBBYVAC	5701715108
7	7090905	1	HÅNDTAG M/SUGEREGULERING	ī36	5701715007
8	7090906	1	FORLÆNGERRØR 0,5 M KROM	ī36	5701715108
9	7090765	1	HÅNDTAG M/SUGEREGULERING	HOBBYVAC	5701715006
10	47109	1	TELESKOPRØR RUSTFRI Ø36	ī36	4005337471
11	7090810	1	FORKROMET RØR Ø60 WD 70	ī50	5701715006
12	7090921	1	PLASTRØR Ø36	ī36	5701715116
12	7090934	1	FORLÆNGERRØR, PLAST	ī40	5701715108
13	7090930	1	FORLÆNGERRØRSSÆT WD 40	ī40	5701715108
9A	7090766	1	KNAP F. SUGEREGULERING	HOBBYVAC	5701715006

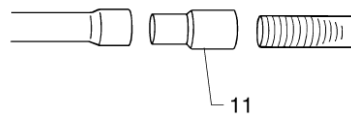
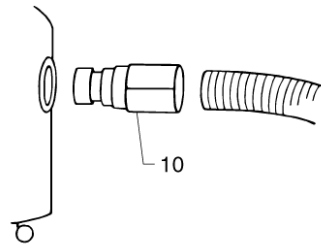
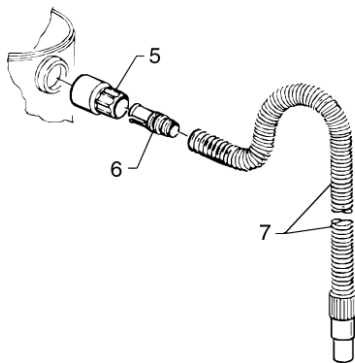
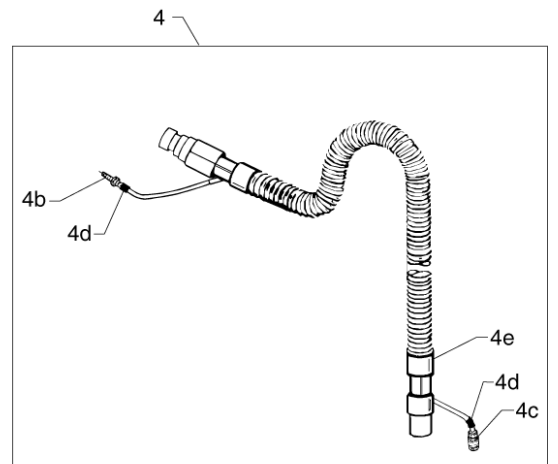
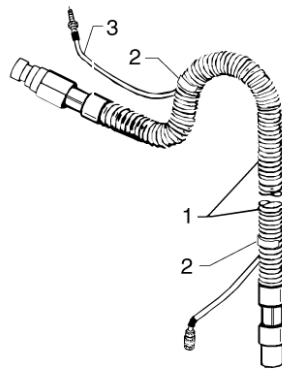
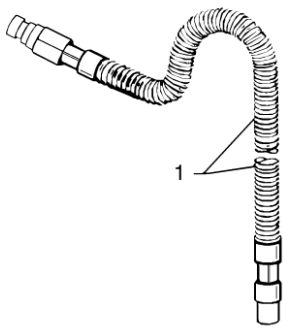
# Hoses WD and WDC

WAP/KEW acces. vacs, health & Safety

05-04-2011

StyMiste ID  
ACCESWD10

11



# Hoses WD and WDC

WAP/KEW acces. vacs, health & Safety

05-04-2011

StyMiste ID  
ACCESWD10

12

Pos	Vare nr.	Ant	Beskrivelse		EAN
1	7090800	1	FLEXSLANGE 2,5 M Ø50 WD	ī50	5701715006
1	7090848	1	FLEXSLANGE Ø36 WDC/WD30	ī36	5701715107
1	7090931	1	FLEXSLANGE 2,5 M Ø38 WD	ī40	5701715108
2	7090850	1	SLANGEHOLDER WDC 30-11	WDC30	5701715006
3	7090846	1	RILSAN SLANGE WDC 30-11	WDC30	5701715107
3	7090851	1	SLANGE M/SKRUEKOBLING	WDC30	5701715006
4	7090940	1	FLEXSLANGE 4,5M M. KEMISL	WDC40	5701715116
5	7090880	1	DREJEKOBLING	WET&DRY, HOBBYVAC, WDA	5701715107
6	7090881	1	BØSNING F. DREJEKOBLING	WET&DRY, HOBBYVAC, WDA	5701715107
7	7090757	1	FLEXSLANGE 2,5 M. Ø36	WET&DRY, HOBBYVAC, WDA	5701715107
10	7090802	1	SLANGEKOBLING Ø40 WD70	ī50	5701715107
10	7090803	1	SLANGEKOBLING Ø50 WD70	ī50	5701715107
10	7090912	1	SLANGEKOBLING Ø36 WD 30	ī36	5701715108
10	7090942	1	SLANGEKOBLING Ø38 WD 40	ī40	5701715108
11	7090804	1	SLANGEKOBLING Ø50 WD70	ī50	5701715107
11	7090913	1	SLANGEKOBLING Ø36 WD	ī36	5701715108
11	7090943	1	SLANGEKOBLING Ø40 - RØR	ī40	5701715108
12	7090952	1	ADAPTER F.HÅNDVÆRKTØJ WDA	WDA	5701715208
4B	7090946	1	QUICK-KOBLING METAL (HAN)	WDC40	5701715209
4C	7090947	1	QUICK-KOBLING METAL (HUN)	WDC40	5701715209
4D	7090948	1	BAND CLAMP FITTING	WDC40	5701715313

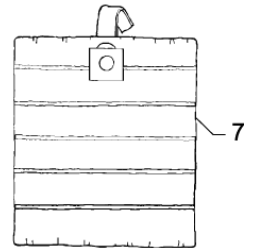
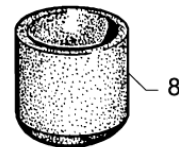
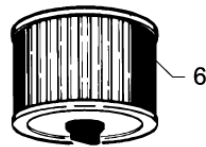
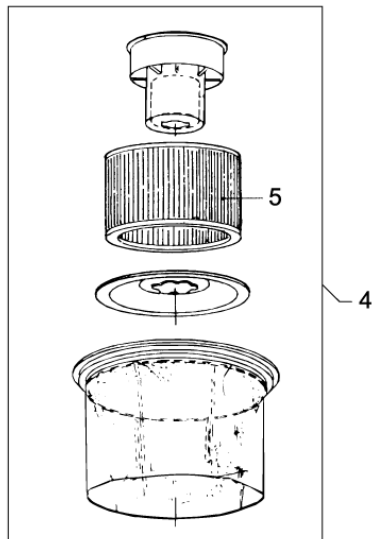
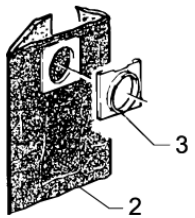
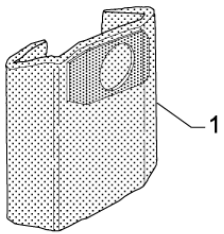
# Dust bags and filters WD/WDC

WAP/KEW acces. vacs, health & Safety

05-04-2011

StyMiste ID  
ACCESWD12

13



# Dust bags and filters WD/WDC

WAP/KEW acces. vacs, health & Safety

05-04-2011

StyMiste ID  
ACCESWD12

14

Pos	Vare nr.	Ant	Beskrivelse		EAN
1	29970	1	FILTER POSER AERO 500/700	WD30, WD40, WDC30, WDC40	4005337299
1	7090569	1	STØV SUGERPOSE WD 70 10STK	WD70, WD90	5701715121
2	6411094	1	STØV SUGERPOSER (5 STK) WD	WET&DRY, HOBBYVAC, WDA	5701715224
3	7090673	1	PLA STRING F. WD POSER	WET&DRY, HOBBYVAC, WDA	5701715107
4	7090620	1	HEPA FILTERSÆT WD30/40	WD30, WD40, WDC30, WDC40	5701715004
5	7090564	1	HEPA CARTRIDGEFILTER WD	WD70, WD90	5701715006
5	7090621	1	HEPA FILTER WD30/40	WD30, WD40	5701715004
6	7090608	1	CARTRIDGE FILTER	WD30/40/70/90, WDA	5701715004
6	7090626	1	CARTRIDGE FILTER WET DRY	WET&DRY, HOBBYVAC, WDA	5701715003
6	7090792	1	BUNDPLADE F. CARTRIDGE FIL	Not shown	5701715321
7	7090807	1	UNIVERSAL POSER 3 STK. WD	WD70, WD90	5701715009
7	7090809	1	UNIVERSAL POSER (3 STK) WD	WD40, WDC40	5701715107
8	7090627	1	POLYURETHANFILTER	WET&DRY, HOBBYVAC, WDA	5701715004
10	7090960	1	NYLON FILTER	WDA	5701715139

# WD70-40, WD40-40 accessories - from 01. sep. 2

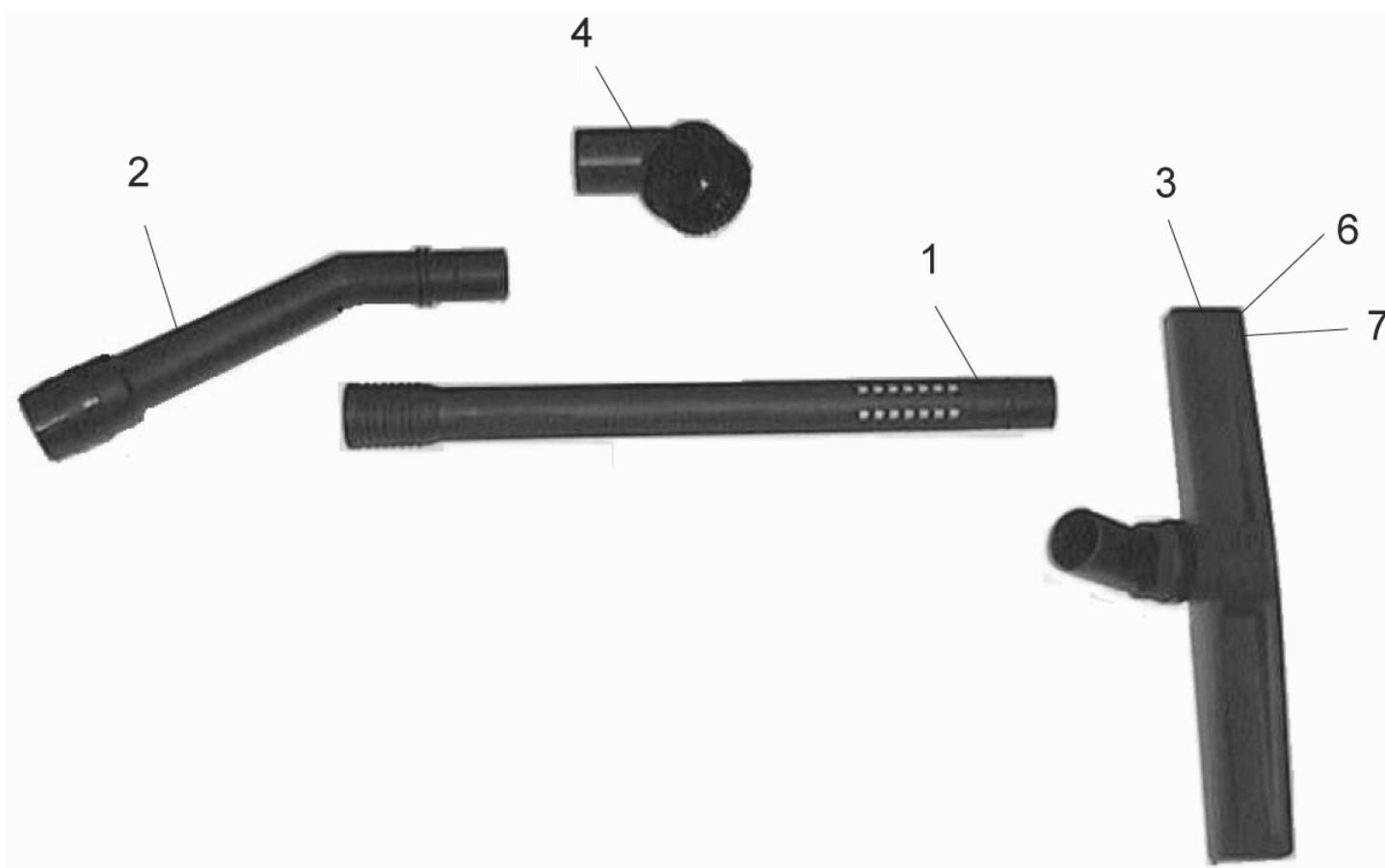
WAP/KEW acces. vacs, health & Safety

05-04-2011

StyMiste ID

ACCESWD14

15



# WD70-40, WD40-40 accessories - from 01. sep. 2

WAP/KEW acces. vacs, health & Safety

05-04-2011

Styliste ID

ACCESWD14

16

Pos	Vare nr.	Ant	Beskrivelse	EAN
1	107091052	1	FORLÆNGERRØR WD70-40	5701715293
2	7090995	1	PLASTRØRBØJNING WD70-40	5701715293
3	107091055	1	VÅDMUNDSTYKKE WD70-40	5701715293
4	107091054	1	RUNDBØRSTE F. WD70-40	5701715293
5	107091053	1	ADAPTOR F. WD 70-40	5701715293
6	7090830	1	BØRSTESKINNE L=395	5701715006
7	7090834	1	GUMMISKINNE L=395	5701715006

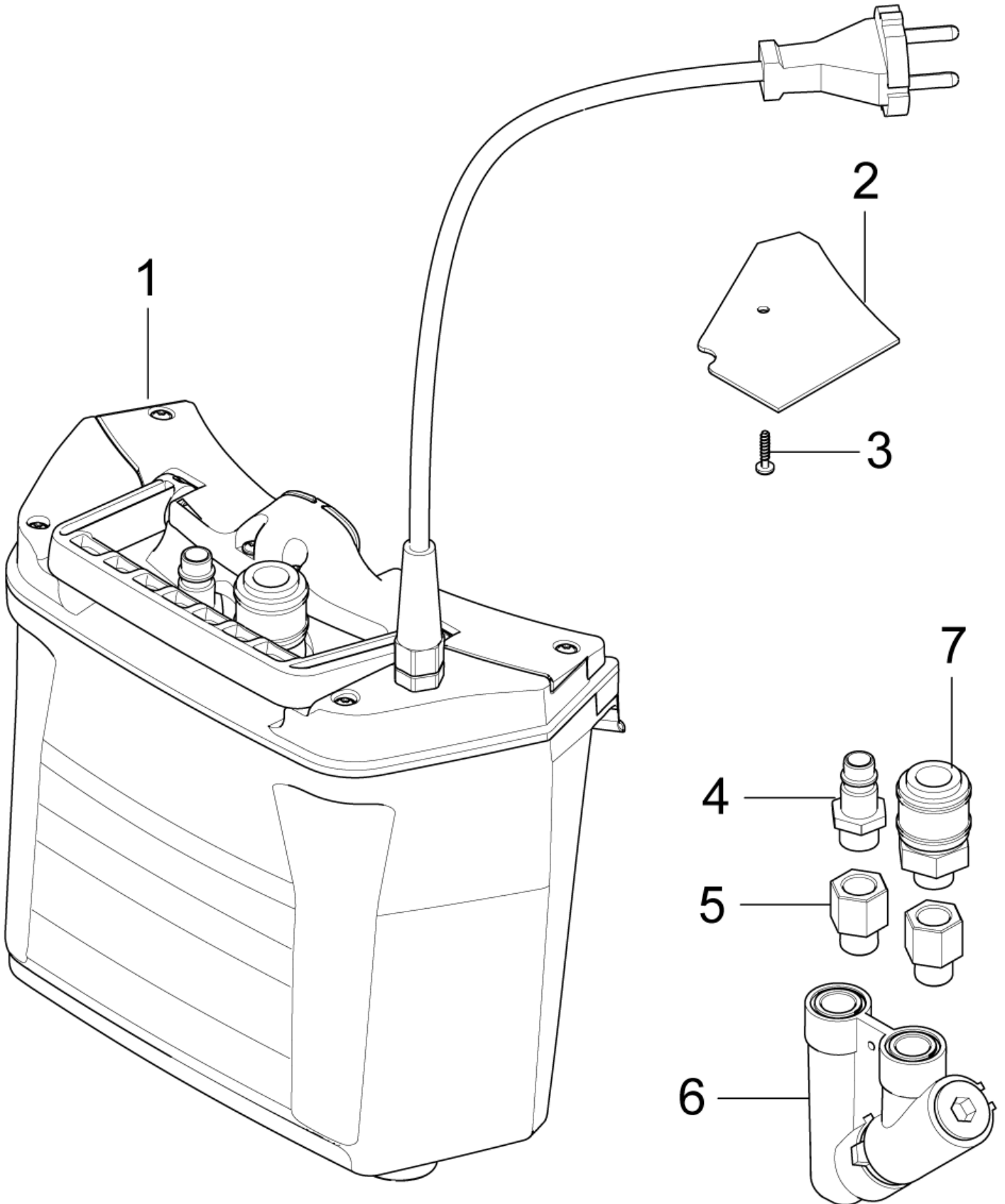
# Airbox 2010

WAP/KEW acces. vacs, health & Safety

05-04-2011

StyMiste ID  
AIRBOX04

17



# Airbox 2010

WAP/KEW acces. vacs, health & Safety

05-04-2011

StyMiste ID  
AIRBOX04

18

Pos	Vare nr.	Ant	Beskrivelse	EAN
1	107400079	1	LUFTAUTOMATIK-BOX, 230 V	7319519671
1	107400394	1	AIRBOX 120V 60 HZ US	7319519671
3	1814598	1	SKRUE	5701715124
4	14809	1	OVERGANG	4005337148
5	25437	2	NIPPLE G1/4-R1/4	4005337254
6	107402622	1	FLOW SENSOR KIT	7319519682
7	14808	1	NIPPEL	4005337148

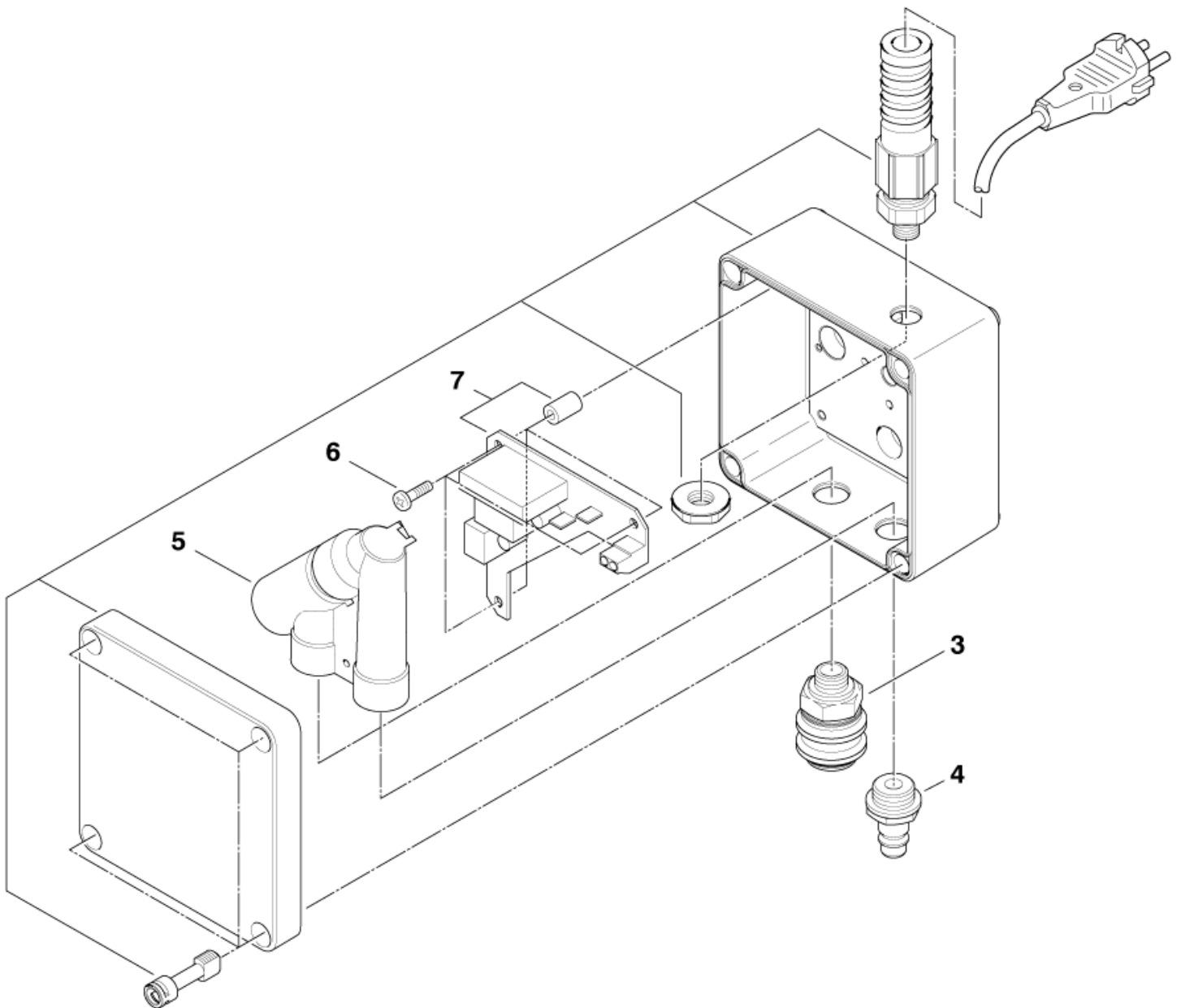
# Airbox

WAP/KEW acces. vacs, health & Safety

05-04-2011

StyMiste ID  
AIRBOX02

19



# Airbox

WAP/KEW acces. vacs, health & Safety

05-04-2011

StyMiste ID  
AIRBOX02

20

Pos	Vare nr.	Ant	Beskrivelse	EAN
0	302001192	1	AIRBOX Complete box as Accessory	4005337038
3	14808	1	NIPPEL	4005337148
4	14809	1	OVERGANG	4005337148
5	60392	1	FLOW SENSOR	4005337603
6	11356	3	EJOT SCREW KA40X14 WN1412 ST/ZN	4005337113
7	302001380	1	CIRCUIT BOARD AIRBOX 230V	4005337048

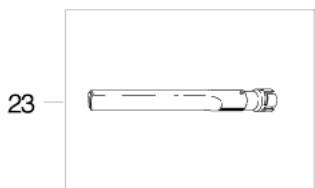
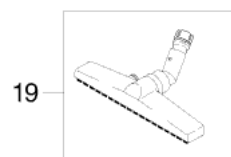
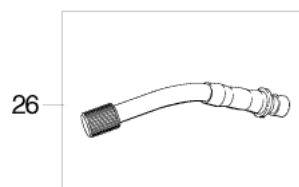
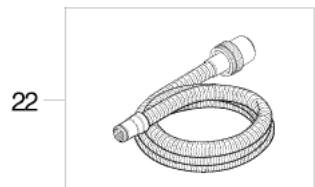
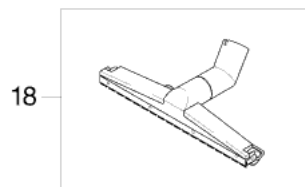
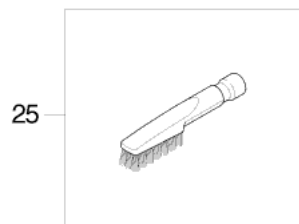
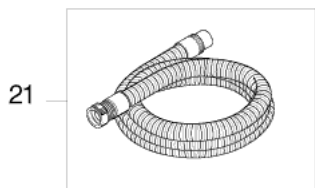
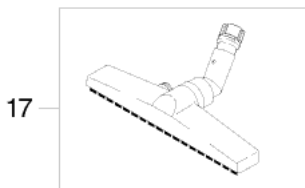
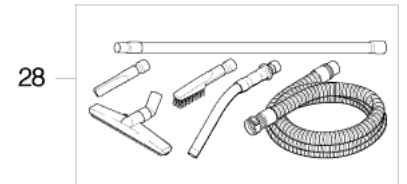
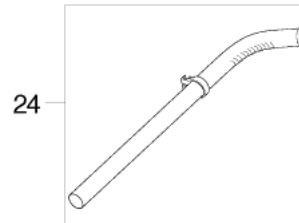
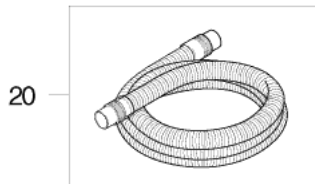
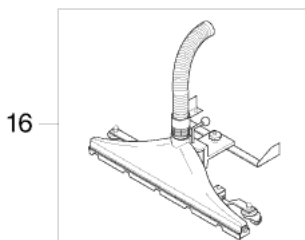
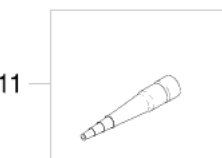
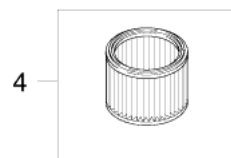
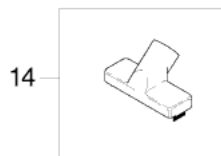
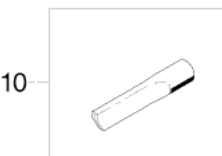
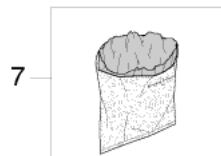
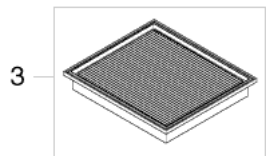
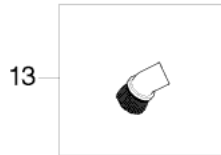
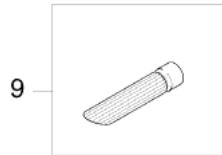
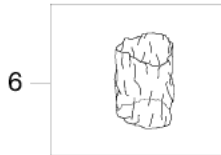
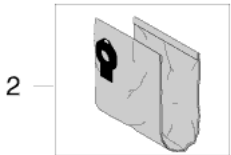
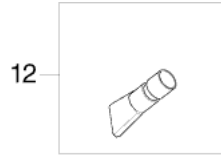
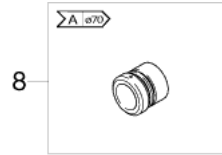
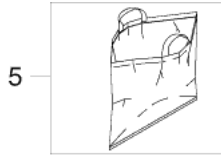
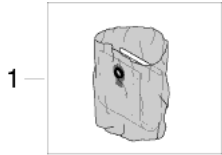
# System 22 (ATTIX)

WAP/KEW acces. vacs, health & Safety

05-04-2011

StyMiste ID  
SYSTEM22

21



# System 22 (ATTIX)

WAP/KEW acces. vacs, health & Safety

05-04-2011

StyMiste ID SYSTEM22

22

Pos	Vare nr.	Ant	Beskrivelse		EAN
1	33209	1	SIKKERHEDSFILTERPOSE	5 PCS. - TURBO	4005337332
2	302001484	1	FILTERPOSE ATTIX 7, 5 STK	5 PCS. - SQ890-3M/B1	4005337061
2	302001871	1	FILTER T/ATTIX 791-2M/B1		4005337080
2	61603	1	FILTERPOSE M, 5 STK.SQ 8	5 PCS. - TURBO	4005337616
3	61604	1	FILTERELEMENT HIGH PRO		4005337616
4	26736	1	FILTER SPECIAL ALU.BELAGT	DYNAMICS	4005337267
5	60676	1	FILTERSTØTTEPOSE SQ 850	SQ890-3M/B1	4005337606
6	30082	1	FILTERBESKYTTELSE POSE SÆT -10X	10 PCS.	4005337300
7	29727	1	STØVPOSE M-TESTET	DYNAMICS	4005337297
8	29726	1	FORMINDSKER B1 70-50MM	AX, I70	4005337297
9	302000227	1	GUMMIFUGEMUNDSTYKKE Ø36	HX	4005337673
9	42836	1	GUMMIFUGEMUNDSTYKKE,RUND	BX	4005337428
10	42837	1	FUGEMUNDSTYKKE, PLAST	BX	4005337428
11	42838	1	GUMMIFUGEMUNDSTYKKE Ø50	BX	4005337428
12	42839	1	GUMMIFUGEMUNDSTYKKE, FLAD	BX	4005337428
13	42831	1	RUNDBØRSTE, PLAST Ø50	BX	4005337428
14	42835	1	GROVSUGNINGSMUNDSTYKKE	BX	4005337428
15	48066	1	RØRBØRSTE Ø36 70-120CM	HX	4005337480
15	48067	1	RØRBØRSTE Ø36 120-200CM	HX	4005337480
16	29194	1	KØREMUNDSTYKKE 600MM SQ	BX	4005337291
16	302001481	1	SUCTION NOZZLE B1 600MM " ATTIX	BX	4005337061
17	302000369	1	GULVMUNDSTYKKE, TØR	HX	4005337674
18	42834	1	GULVMUNDSTYKKE, TØR, 50CM	BX	4005337428
19	302000369	1	GULVMUNDSTYKKE, TØR	HX	4005337674
20	42825	1	SPÅNESUGESLANGE Ø50 4M	BX	4005337428
20	42830	1	SUGESLANGE, METAL Ø50 4M	BX	4005337428
20	43245	1	SUGESLANGE Ø50 4M	BX	4005337432
20	63710	1	SPÅNESUGESLANGE Ø50 8M	BX	4005337637
20	63711	1	SPÅNESUGESLANGE Ø50 12M	BX	4005337637
20	63712	1	SLANGE,Ø50X16000 SLIDSTÆR K ATEX Z22	BX	4005337637
20	63713	1	SPÅNESUGESLANGE Ø50 20M	BX	4005337637
21	44193	1	SLANGE Ø36X4000 CONDUCT. TYPE 22	HX - AX	4005337441
22	48131	1	SUGESLANGE Ø32 5M		4005337481
22	48132	1	SUGESLANGE Ø27 3,5M	KX - AX	4005337481
23	44192	1	FUGEMUNDSTYKKE, PLAST Ø36	HX	4005337441
24	33609	1	FORLÆNGERRØR Ø50 SS TYPE 22 1100MM BUET	IX	4005337336
25	44191	1	BØRSTE, PLASTIC Ø36 23CM	HX	4005337441
26	44188	1	RØRBØJNING M.DREJELED RF	HX	4005337441
27	46982	1	FORLÆNGERRØR Ø36 TYPE 22 950MM	HX	4005337469
28	48907	1	B1-SÆT, ANTISIATISK Ø36		4005337489

# System 32 and 27 (ATTIX)

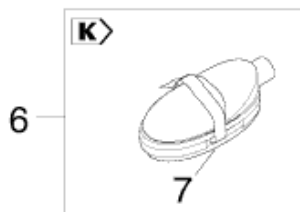
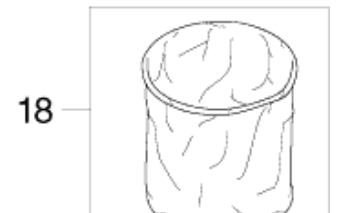
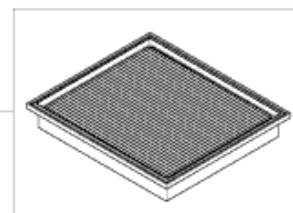
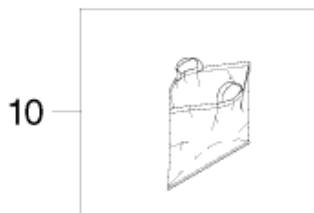
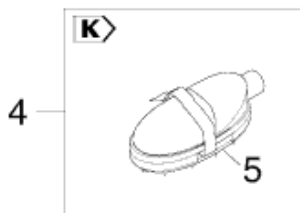
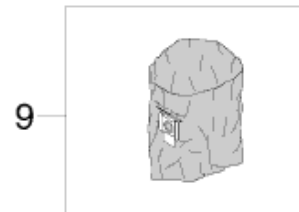
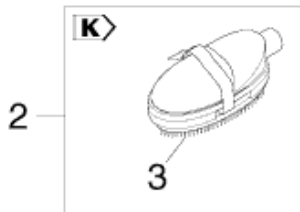
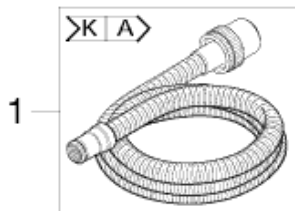
WAP/KEW acces. vacs, health & Safety

05-04-2011

StyMiste ID SYSTEM32

23

## System 32 / 27



# System 32 and 27 (ATTIX)

WAP/KEW acces. vacs, health & Safety

05-04-2011

StyMiste ID  
SYSTEM32

24

Pos	Vare nr.	Ant	Beskrivelse		EAN
1	14289	1	SUGESLANGE F. EL 3,5M Ø27	KA	4005337142
1	15325	1	SUGESLANGE ANT. 3,5M Ø27	KA	4005337153
1	30657	1	SUGESLANGE ANTIST.5M Ø32	KA	4005337306
2	6094	1	STIFTSTRIGLE, PLAST Ø36	K	4005337060
3	15038	1	STIFTSTRIGLEINDSATS	K	4005337150
4	6092	1	KAMSTRIGLE, PLAST Ø36	K	4005337060
5	15037	1	KAMSTRIGLEINDSATS F. 6092	K	4005337150
6	6093	1	BØRSTESTRIGLE, PLAST Ø36	K	4005337060
7	15039	1	BØRSTESTRIGLEINDSATS	K	4005337150
8	14912	1	FILTERPOSE (5 STK.) TURBO		4005337149
8	302000449	1	FILTERPOSE ATTIX 3, 5STK.		4005337682
8	302000527	1	FILTERPOSER ATTIX 5		4005337683
8	302001138	1	FILTERPOSE F. ATTIX 2M XC		4005337037
8	302001484	1	FILTERPOSE ATTIX 7, 5 STK		4005337061
8	61603	1	FILTERPOSE M, 5 STK.SQ 8		4005337616
9	302000728	1	PLASTPOSE, ÅBEN FOR ATTIX		4005337027
9	302000804	1	FILTERBAG "ATTIX 3"SET5		4005337033
9	302001480	1	OPSAMLINGSGPOSE ATTIX 7		4005337061
9	302001629	1	OPSAMLINGSGPOSE, 25STK.		4005337071
10	30082	1	FILTERBESKYTTELSE POSE SÆT -10X		4005337300
10	60676	1	FILTERSTØTTEPOSE SQ 850		4005337606
11	302000200	1	FILTERSTØTTEPOSE SQ6		4005337673
11	40617	1	FILTERSTØTTEPOSE TURBO D		4005337406
12	302001040	1	SIKKERHEDSFILTERPOSE		4005337035
12	302001141	1	SIKKERHEDSFILTERPOSE		4005337036
12	302001143	1	SIKKERHEDSGPOSE SÆT 5		4005337036
12	302001486	1	SIKKERHEDSFILTERPOSE		4005337061
12	33209	1	SIKKERHEDSFILTERPOSE		4005337332
13	107400564	1	FILTER ELEMENT, H-CLASS	H-Class	5715492044
13	302000490	1	FILTER ELEMENT ATTIX 3-5	M-Class	4005337682
13	302000658	1	MICROFILTER ATTIX 3-5-H	H-Class	4005337690
13	302000751	1	FILTERELEMENT L+M SET	M-Class	4005337020
13	302001134	1	MICROFILTER ATTIX 2H XC	M-Class	4005337037
14	26736	1	FILTER SPECIAL ALU.BELAGT		4005337267
14	34931	1	FILTERELEMENT M-TESTET		4005337349
14	41164	1	FILTERELEMENT MPOSE		4005337411
14	61605	1	FILTERELEMENT SQ 850-11		4005337616
15	11617	1	MKROFILTERELEMENT		4005337116
15	302001095	1	FILTER ELEMENT SET-1		4005337035
16	11641	1	FILTER CLOTH (WAS 30263)		4005337116
16	11801	1	FØR-FILTER AERO/SQ450		4005337118
17	15475	1	FILTER-SI SQ 4-5-6		4005337154

# System 32 and 27 (ATTIX)

WAP/KEW acces. vacs, health & Safety

05-04-2011

StyMiste ID

SYSTEM32

25

Pos	Vare nr.	Ant	Beskrivelse	EAN
18	17070	1	FILTERINDSATS SPECIAL	4005337170
18	17582	1	FILTERINDSATS - SUPER T	4005337175
18	302000525	1	STOFFILTERINDSATS ATTIX 5	4005337683
18	302000606	1	STOFFILTERINDSATS ATTIX 3	4005337686
18	61910	1	STOFFILTER SPECIAL SQ 850	4005337619
18	8727	1	FILTERINDSATS - BOMULD	4005337087

# System 36 (ATTIX)

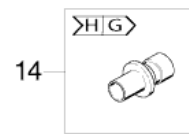
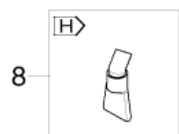
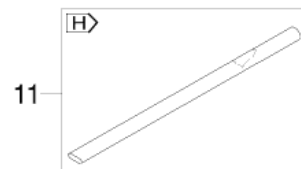
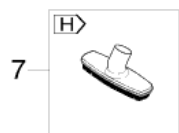
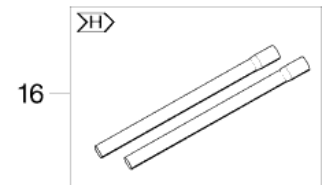
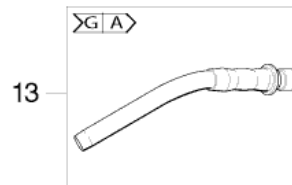
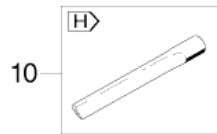
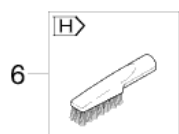
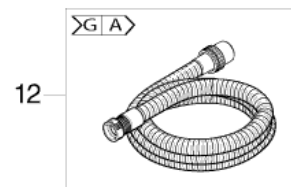
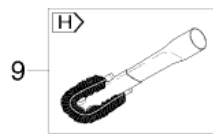
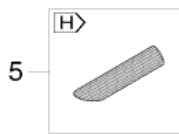
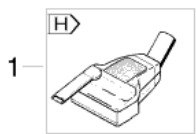
WAP/KEW acces. vacs, health & Safety

05-04-2011

StyMiste ID  
SYSTEM36

26

## System 36



# System 36 (ATTIX)

WAP/KEW acces. vacs, health & Safety

05-04-2011

StyMiste ID  
SYSTEM36

27

Pos	Vare nr.	Ant	Beskrivelse		EAN
1	41275	1	TURBINE-BØRSTEMUNDSTYKKE	H	4005337412
2	5146	1	BØRSTE Ø36	H	4005337051
3	5145	1	POLSTERMUNDSTYKKE, ALU	H	4005337051
4	14295	1	POLSTERMUNDSTYKKE MBØRST Ø36 115MM	H	4005337142
5	5067	1	FUGEMUNDSTYKKE, GUMMI Ø36	H	4005337050
6	6086	1	BØRSTE, PLAST Ø36	H	4005337060
7	40455	1	OVAL BØRSTEMUNDSTYKKE Ø36	H	4005337404
8	40456	1	FUGEMUNDSTYKKE GUMMI FLAD	H	4005337404
9	5144	1	RADIATORBØRSTE Ø36	H	4005337051
10	6084	1	FUGEMUNDSTYKKE, PLAST Ø36	H	4005337060
11	17836	1	FUGEMUNDSTYKKE, KROM Ø36	H	4005337178
12	25537	1	SLANGE Ø36X4000 MLYNKOBL	GA	4005337255
12	46948	1	SUGESLANGE 3M Ø36	GA	4005337469
12	60781	1	SLANGE ANTISTAT.LYNKOBL. Ø36X3000MM	GA	4005337607
12	61779	1	SLANGE OLIE RES. Ø36X4000 MLYNKOBLING	GA	4005337617
12	63209	1	SUGESLANGE ANTISTATISK 4M	GA	4005337632
13	302000528	1	RØRBØJNING Ø36	HG	4005337683
13	46691	1	RØRBØJNING, RF STÅL Ø36	HG	4005337466
14	29457	1	ADAPTER	HG	4005337294
15	47109	1	TELESKOPRØR RUSTFRI Ø36	H	4005337471
16	107400032	1	SUGERØR ALU. Ø36 2X500 MM	H	4005337147
16	15546	1	FORLÆNGERRØR, 2 STK, Ø36 500MM	H	4005337155
16	302000529	1	SUGERØR Ø36 CROM	H	4005337021

# System 38 (ATTIX)

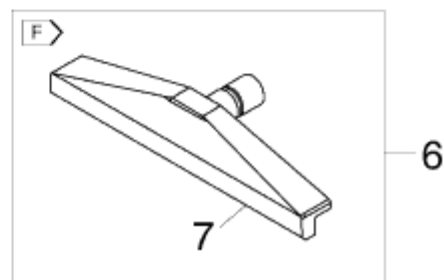
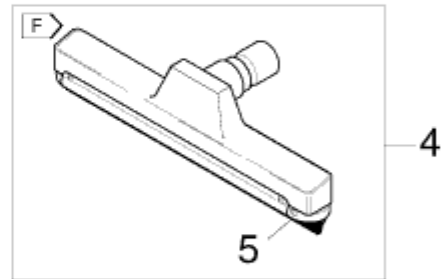
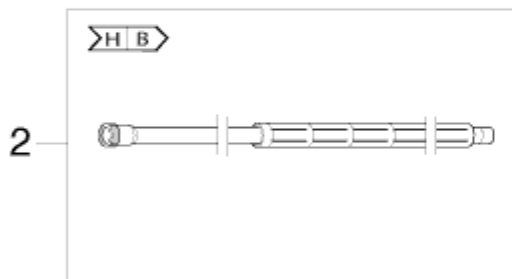
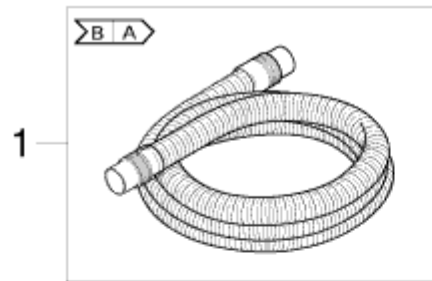
WAP/KEW acces. vacs, health & Safety

05-04-2011

StyMiste ID  
SYSTEM38

28

## System 38



# System 38 (ATTIX)

WAP/KEW acces. vacs, health & Safety

05-04-2011

StyMiste ID  
SYSTEM38

29

Pos	Vare nr.	Ant	Beskrivelse		EAN
1	15365	1	SLANGE UNIVERS.KONISK Ø38/36X4000	EA	4005337153
1	6070	1	SLANGE VARMERES.KONISK Ø38/36X4000	EA	4005337060
2	15339	1	FORL.RØR VARMEISO. ALU 2M	EA	4005337153
2	15340	1	FORL.RØR VARMEISO.ALU 2,5	FE	4005337153
3	7964	1	RØRBØRSTE Ø70-Ø120 SQ Ø38	F	4005337079
3	8054	1	RØRBØRSTE Ø120-Ø200 SQ	F	4005337080
4	6079	1	OVNMUNDSTYKKE-SKRABELISTE	F	4005337060
5	6080	1	TEFLON-SKRABELISTE F. 607 9	F	4005337060
6	63380	1	OVNMUNDSTYKKE M/TEFLON XL	F	4005337633
7	64930	1	SKRABELISTE RUSTFRI STÅL	F	4005337649

# System 50 (ATTIX)

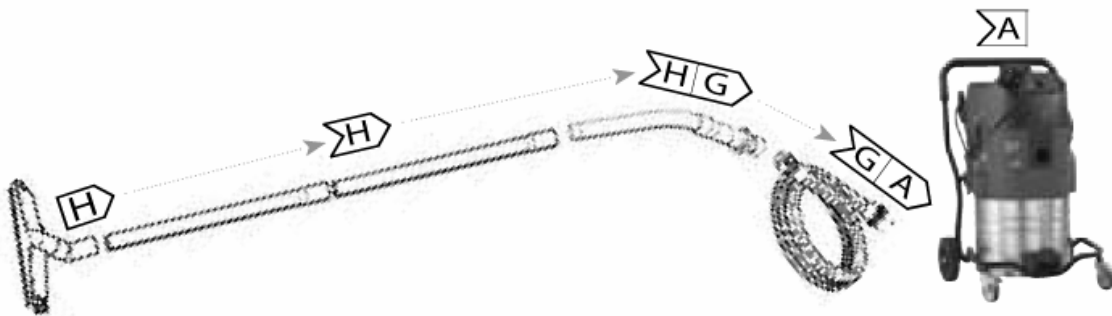
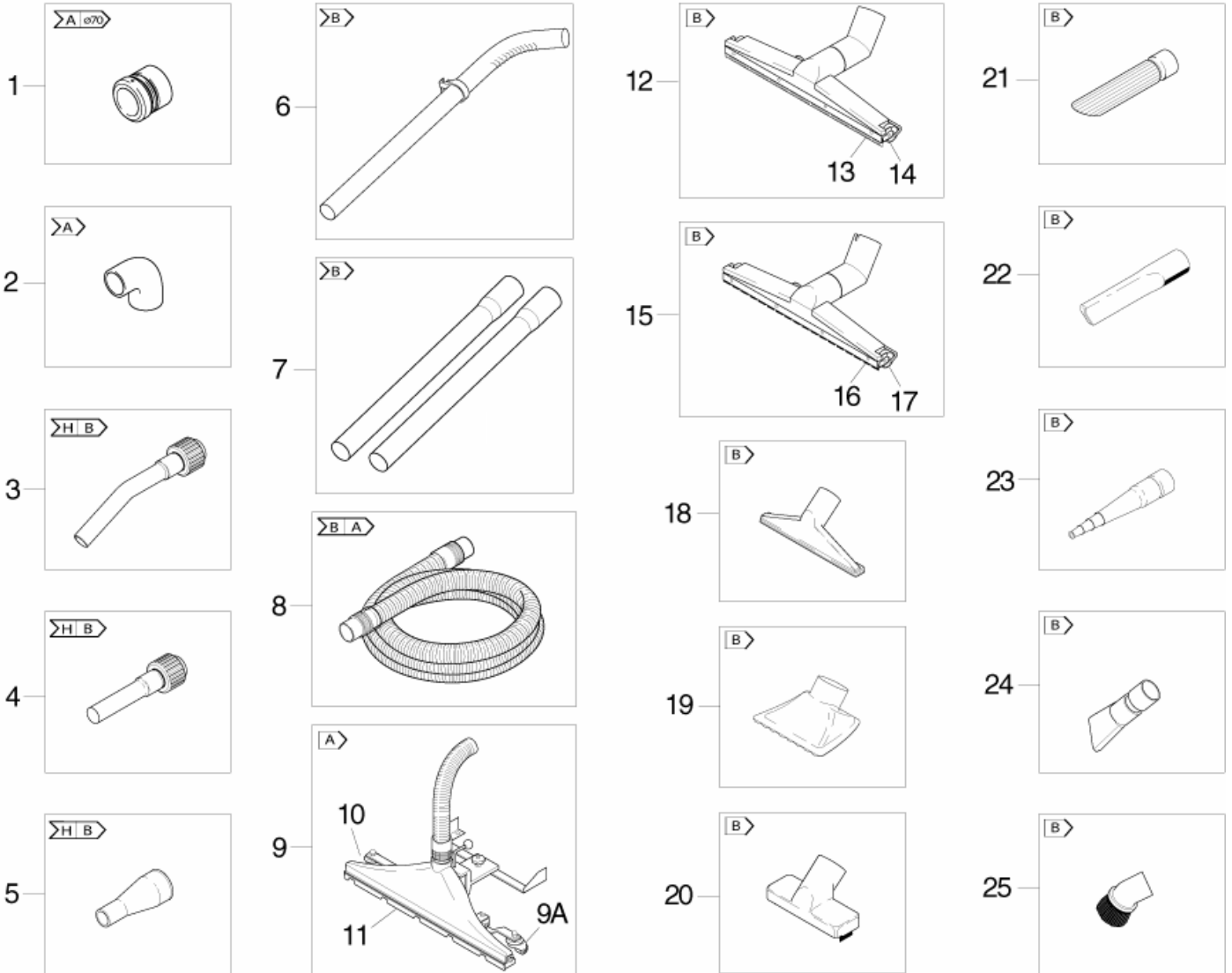
WAP/KEW acces. vacs, health & Safety

05-04-2011

StyMiste ID  
SYSTEM50

30

## System 50



The right fit

**A** → **A**

The wrong fit

**F** ~~→~~ **A**

# System 50 (ATTIX)

WAP/KEW acces. vacs, health & Safety

05-04-2011

StyMiste ID  
SYSTEM50

31

Pos	Vare nr.	Ant	Beskrivelse		EAN
1	29716	1	ADAPTER MULTIFIT/DYNAMICS	A 170	4005337297
2	5089	1	VINKELBØJNING, INDGANG SQ	A	4005337050
3	15341	1	RØRBØJNING KROM Ø50/Ø36	HB	4005337153
4	15342	1	RØRBØJNING LIGE Ø50/Ø36	HB	4005337153
5	40452	1	ADAPTER PLAST Ø50/Ø36	HB	4005337404
6	15335	1	FORLÆNGERRØR M.BØJ. ALU	B	4005337153
7	5152	1	FORLÆNGERRØR, 2 STK.PLAST	B	4005337051
8	11061	1	SLANGE VARMERES. Ø50X4000MM	BA	4005337110
8	15013	1	SLANGE T/METALSPÅNER Ø50X4000M	BA	4005337150
8	15182	1	SLANGE T/TRÆSPÅNER Ø50X4000MM	BA	4005337151
8	15358	1	SUGESLANGE 4M Ø50	BA	4005337153
8	15815	1	SLANGE ANTISTA.Ø50X4000MM	BA	4005337158
8	19930	1	SUGESLANGE UNIVERSAL 1,75	BA	4005337199
8	6468	1	SLANGE OLIERES. Ø50X4000	BA	4005337064
9	29194	1	KØREMUNDSTYKKE 600MM SQ	A	4005337291
9	302001481	1	SUCTION NOZZLE B1 600MM " ATTIX	A	4005337061
9	302002886	1	KØREMUNDSTYKKE ATTIX 9	A, ATTIX 995	4005337131
10	7993	1	BØRSTELISTE F. 29194		4005337079
11	15814	1	GUMMILISTE F. 29194 60 CM		4005337158
12	15344	1	GULVMUNDSTYKKE VÅDSUGNING	B	4005337153
13	15346	1	GUMMILISTE F. 15343	B	4005337153
13	302000188	1	GUMMILISTE, OLIERESISTENT	B	4005337017
14	15345	1	HJUL F. 15349/48/50	B	4005337153
15	15343	1	TØRSUGNINGSMUNDST.ALU Ø50	B	4005337153
16	15347	1	BØRSTELISTE F. 15343	B	4005337153
17	15345	1	HJUL F. 15349/48/50	B	4005337153
18	6077	1	GULVMUNDSTYKKE PLAST	B	4005337060
19	5153	1	GROVSUGNINGSMUNDSTYKKE	B	4005337051
20	41100	1	BØRSTEMUNDSTYKKE GROV ALU	B	4005337411
21	7868	1	FUGEMUNDSTYKKE GUMMI RUND	B	4005337078
22	7102	1	FUGEMUNDSTYKKE, PLAST Ø50	B	4005337071
23	19936	1	FUGEMUNDSTYKKE, GUMMI	B	4005337199
24	31244	1	GUMMIFUGEMUNDSTK. FLAD	B	4005337312
25	40458	1	RUNDBØRSTE Ø50 SQ	B	4005337404
09A	6458	1	HJUL F. GULVMUNDSTYKKE	wheel for 29194, 14753, 302001481	4005337064

# System 36 (2) (ATTIX)

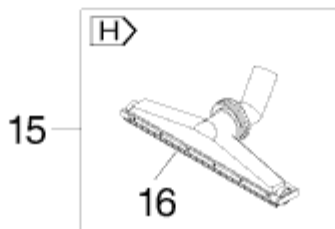
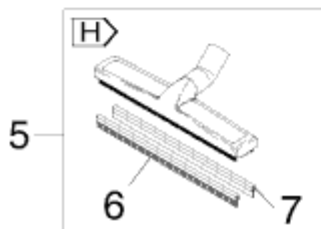
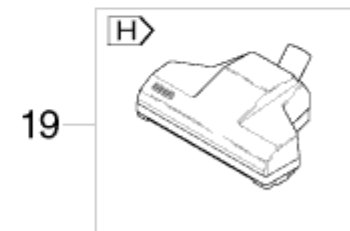
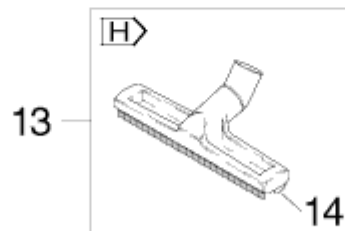
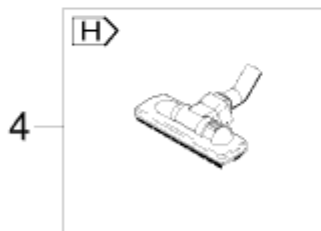
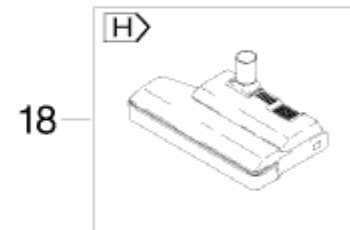
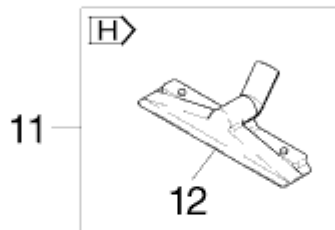
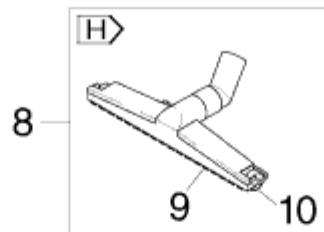
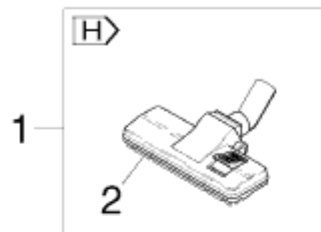
WAP/KEW acces. vacs, health & Safety

05-04-2011

StyMiste ID  
SYSTEM362

32

## System 36



# System 36 (2) (ATTIX)

WAP/KEW acces. vacs, health & Safety

05-04-2011

StyMiste ID  
SYSTEM362

33

Pos	Vare nr.	Ant	Beskrivelse		EAN
1	302000477	1	KOMBIMUNDSTYKKE Ø36 260MM	H	4005337682
2	64127	1	TRÅDOPSAMLER	H	4005337641
3	302000962	1	KOMBIMUNDSTYKKE, PLAST	H	4005337031
4	302000259	1	GULVMUNDSTYKKE, PLAST	H	4005337673
5	60356	1	UNIVERSALMUNDSTK. PLAST	H	4005337603
6	60358	1	BØRSTELISTE F. 60356	H	4005337603
7	60359	1	GUMMLISTE F. 60356	H	4005337603
8	15348	1	TØRSUGNINGSMUNDSTYKKE Ø36	H	4005337153
8	15349	1	VÅDSUGNINGSMUNDSTYKKE Ø36	H	4005337153
8	15350	1	TØRSUGNINGSMUNDSTYKKE Ø36	H	4005337153
9	15351	1	BØRSTELISTE F. 15348	H	4005337153
9	15352	1	GUMMLISTE F. 15349	H	4005337153
9	15353	1	SPEC.TEKSTILLISTE F.15350	H	4005337153
9	302000186	1	GUMMLISTE, OLIERESISTENT	H	4005337017
10	15345	1	HJUL F. 15349/48/50	H	4005337153
11	5147	1	GULVMUNDSTYKKE ALU. Ø36	H	4005337051
12	6521	1	BØRSTEINDSATS F. 5147	H	4005337065
13	7270	1	VÅDSUGNINGSMUNDSTK. PLAST 300MM Ø36	H	4005337072
14	18794	1	HJUL F. 7270	H	4005337187
15	5149	1	GULVMUNDSTYKKE, PLAST Ø36	H	4005337051
16	6114	1	GUMMLISTE F. 5149	H	4005337061
17	64195	1	FLOOR NOZZLE W.BRISTLES	H	4005337641
18	11664	1	BØRSTEMUNDSTYKKE EL-DREV	H	4005337116
19	54118	1	TURBINE-MUNDSTYKKE Ø36	H	4005337541

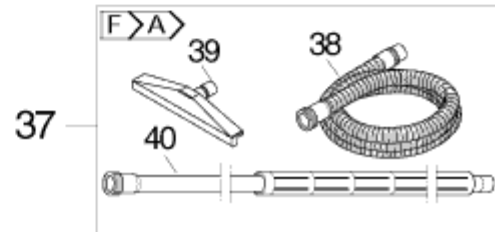
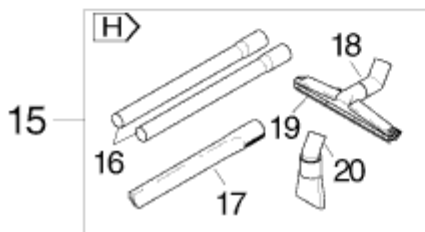
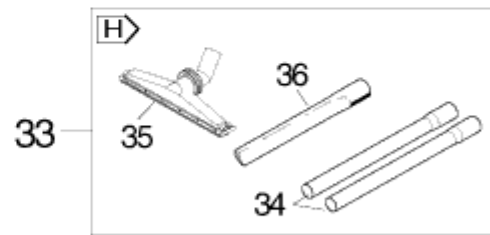
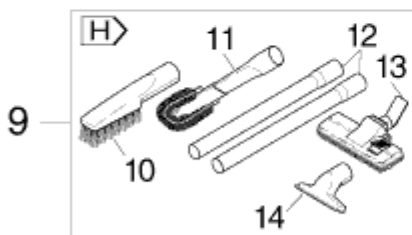
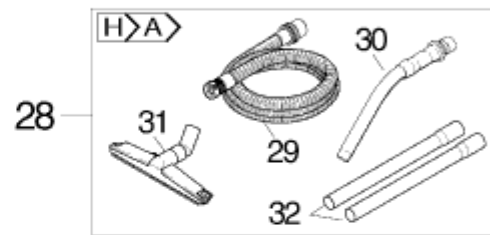
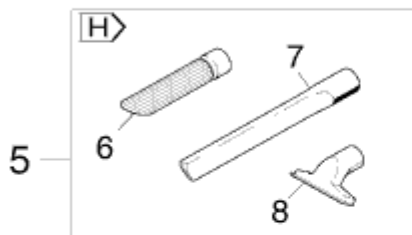
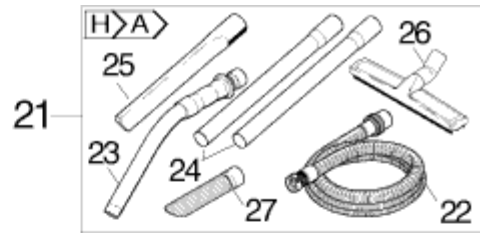
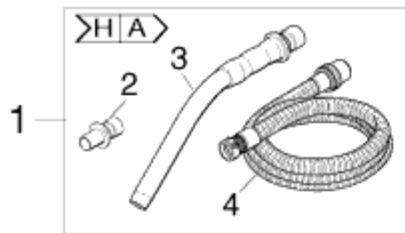
# Accessory Sets 1 - (except for type 22)

WAP/KEW acces. vacs, health & Safety

05-04-2011

StyMiste ID  
SYSTEMSET

34



# Accessory Sets 1 - (except for type 22)

WAP/KEW acces. vacs, health & Safety

05-04-2011

StyMiste ID  
SYSTEMSET

35

Pos	Vare nr.	Ant	Beskrivelse		EAN
1	63210	1	SLANGE-SÆT SQ Ø36	HA	4005337632
2	29457	1	ADAPTER	HA	4005337294
3	46691	1	RØRBØJNING, RF STÅL Ø36	HA	4005337466
4	25537	1	SLANGE Ø36X4000 M/LYNKOBL	HA	4005337255
5	63211	1	AUTO-SÆT SQ Ø36	H	4005337632
6	5067	1	FUGEMUNDSTYKKE, GUMMI Ø36	H	4005337050
7	6084	1	FUGEMUNDSTYKKE, PLAST Ø36	H	4005337060
8	14295	1	POLSTERMUNDSTYKKE M/BØRST Ø36 115MM	H	4005337142
9	63212	1	HUS OG KONTOR-SÆT SQ Ø36	H	4005337632
10	6086	1	BØRSTE, PLAST Ø36	H	4005337060
11	5144	1	RADIATORBØRSTE Ø36	H	4005337051
13	8046	1	KOMBIMUNDSTYKKE, PLAST Ø36 270MM	H	4005337080
14	14295	1	POLSTERMUNDSTYKKE M/BØRST Ø36 115MM	H	4005337142
15	63213	1	HÅNDVÆRKER OG INDUSTRI-SÆ	H	4005337632
16	15546	1	FORLÆNGERRØR, 2 STK, Ø36 500MM	H	4005337155
17	6084	1	FUGEMUNDSTYKKE, PLAST Ø36	H	4005337060
18	15348	1	TØRSUGNINGSMUNDSTYKKE Ø36	H	4005337153
19	15352	1	GUMMLISTE F. 15349	H	4005337153
20	40456	1	FUGEMUNDSTYKKE GUMMI FLAD	H	4005337404
21	302000927	1	VÆRKSTEDS-SÆT Ø36	HA	4005337030
22	25537	1	SLANGE Ø36X4000 M/LYNKOBL	HA	4005337255
23	46691	1	RØRBØJNING, RF STÅL Ø36	HA	4005337466
24	15546	1	FORLÆNGERRØR, 2 STK, Ø36 500MM	HA	4005337155
25	6084	1	FUGEMUNDSTYKKE, PLAST Ø36	HA	4005337060
26	60356	1	UNIVERSALMUNDSTK. PLAST	HA	4005337603
27	5067	1	FUGEMUNDSTYKKE, GUMMI Ø36	HA	4005337050
28	63214	1	INDUSTRI-SÆT SQ Ø36	HA	4005337632
29	61779	1	SLANGE OLIE RES. Ø36X4000 M/LYNKOBLING	HA	4005337617
30	46691	1	RØRBØJNING, RF STÅL Ø36	HA	4005337466
31	15349	1	VÅDSUGNINGSMUNDSTYKKE Ø36	HA	4005337153
32	15546	1	FORLÆNGERRØR, 2 STK, Ø36 500MM	HA	4005337155
33	7727	1	VÅDSUGNINGS-SÆT SQ Ø36	H	4005337077
34	15546	1	FORLÆNGERRØR, 2 STK, Ø36 500MM	H	4005337155
35	5149	1	GULVMUNDSTYKKE, PLAST Ø36	H	4005337051
36	6084	1	FUGEMUNDSTYKKE, PLAST Ø36	H	4005337060
37	14341	1	OVNRENGØRINGS-SÆT SQ Ø36	FA	4005337143
38	6070	1	SLANGE VARMERES.KONISK Ø38/36X4000	FA	4005337060
39	63380	1	OVNMUNDSTYKKE M/TEFLON XL	FA	4005337633
40	15340	1	FORL.RØR VARMEISO.ALU 2,5	FA	4005337153

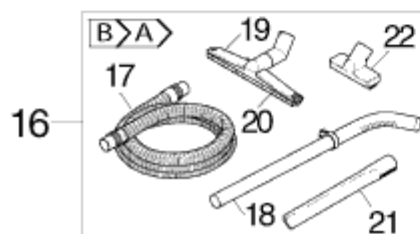
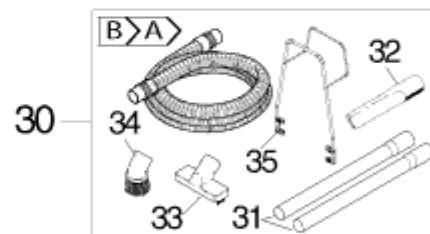
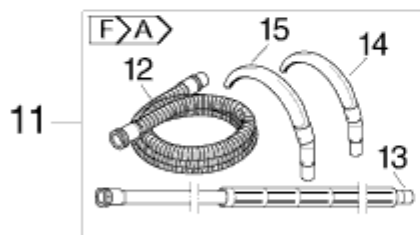
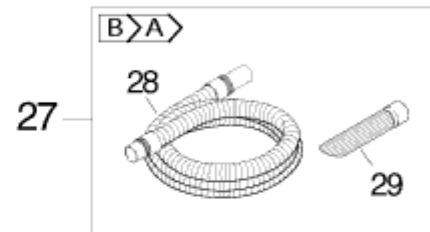
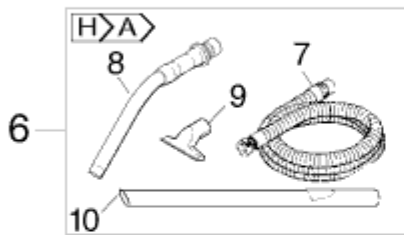
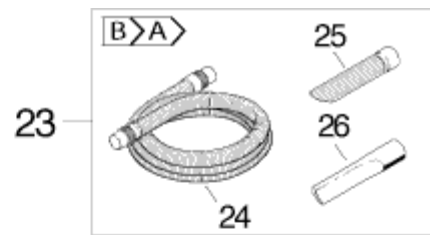
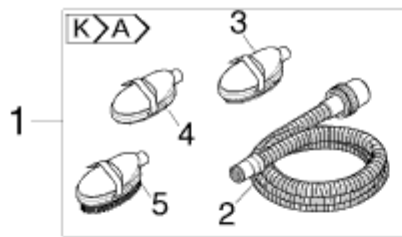
# Accessory Sets 2 - (except for type 22)

WAP/KEW acces. vacs, health & Safety

05-04-2011

StyMiste ID  
SYSTEMSET2

36



# Accessory Sets 2 - (except for type 22)

WAP/KEW acces. vacs, health & Safety

05-04-2011

StyMiste ID  
SYSTEMSET2

37

Pos	Vare nr.	Ant	Beskrivelse		EAN
1	6095	1	HUSDYR-SÆT SQ Ø36	KA	4005337060
2	14289	1	SUGESLANGE F. EL 3,5M Ø27	KA	4005337142
3	6094	1	STIFTSTRIGLE, PLAST Ø36	KA	4005337060
4	6092	1	KAMSTRIGLE, PLAST Ø36	KA	4005337060
5	6093	1	BØRSTESTRIGLE, PLAST Ø36	KA	4005337060
6	60430	1	KEDEL-SÆT SQ Ø36	HA	4005337604
7	46948	1	SUGESLANGE 3M Ø36	HA	4005337469
8	46691	1	RØRBØJNING, RF STÅL Ø36	HA	4005337466
9	5145	1	POLSTERMUNDSTYKKE, ALU	HA	4005337051
10	17836	1	FUGEMUNDSTYKKE, KROM Ø36	HA	4005337178
11	63215	1	RØRRENGØRINGSSÆT Ø38	FA	4005337632
12	15365	1	SLANGE UNIVERS.KONISK Ø38/36X4000	FA	4005337153
13	15340	1	FORL.RØR VARMEISO.ALU 2,5	FA	4005337153
14	7964	1	RØRBØRSTE Ø70-Ø120 SQ Ø38	FA	4005337079
15	8054	1	RØRBØRSTE Ø120-Ø200 SQ	FA	4005337080
16	63216	1	INDUSTRI-SÆT SQ Ø50	BA	4005337632
17	15358	1	SUGESLANGE 4M Ø50	BA	4005337153
18	15335	1	FORLÆNGERRØR M.BØJ. ALU	BA	4005337153
19	15343	1	TØRSUGNINGSMUNDST.ALU Ø50	BA	4005337153
20	15346	1	GUMMILISTE F. 15343	BA	4005337153
21	7102	1	FUGEMUNDSTYKKE, PLAST Ø50	BA	4005337071
22	41100	1	BØRSTEMUNDSTYKKE GROV ALU	BA	4005337411
23	6085	1	STANDARD-SÆT SQ Ø50	BA	4005337060
24	15358	1	SUGESLANGE 4M Ø50	BA	4005337153
25	7868	1	FUGEMUNDSTYKKE GUMMI RUND	BA	4005337078
26	7102	1	FUGEMUNDSTYKKE, PLAST Ø50	BA	4005337071
27	61681	1	SPÅNE-SÆT SQ Ø50	BA	4005337616
28	15182	1	SLANGE T/TRÆSPÅNER Ø50X4000MM	BA	4005337151
29	7868	1	FUGEMUNDSTYKKE GUMMI RUND	BA	4005337078
30	63217	1	BUS SÆT SQ Ø50	BA	4005337632
31	5152	1	FORLÆNGERRØR, 2 STK.PLAST	BA	4005337051
32	7102	1	FUGEMUNDSTYKKE, PLAST Ø50	BA	4005337071
33	41100	1	BØRSTEMUNDSTYKKE GROV ALU	BA	4005337411
34	40458	1	RUNDBØRSTE Ø50 SQ	BA	4005337404
35	65081	1	SLANGEHOLDERSÆT F. SQ6/8	BA	4005337650

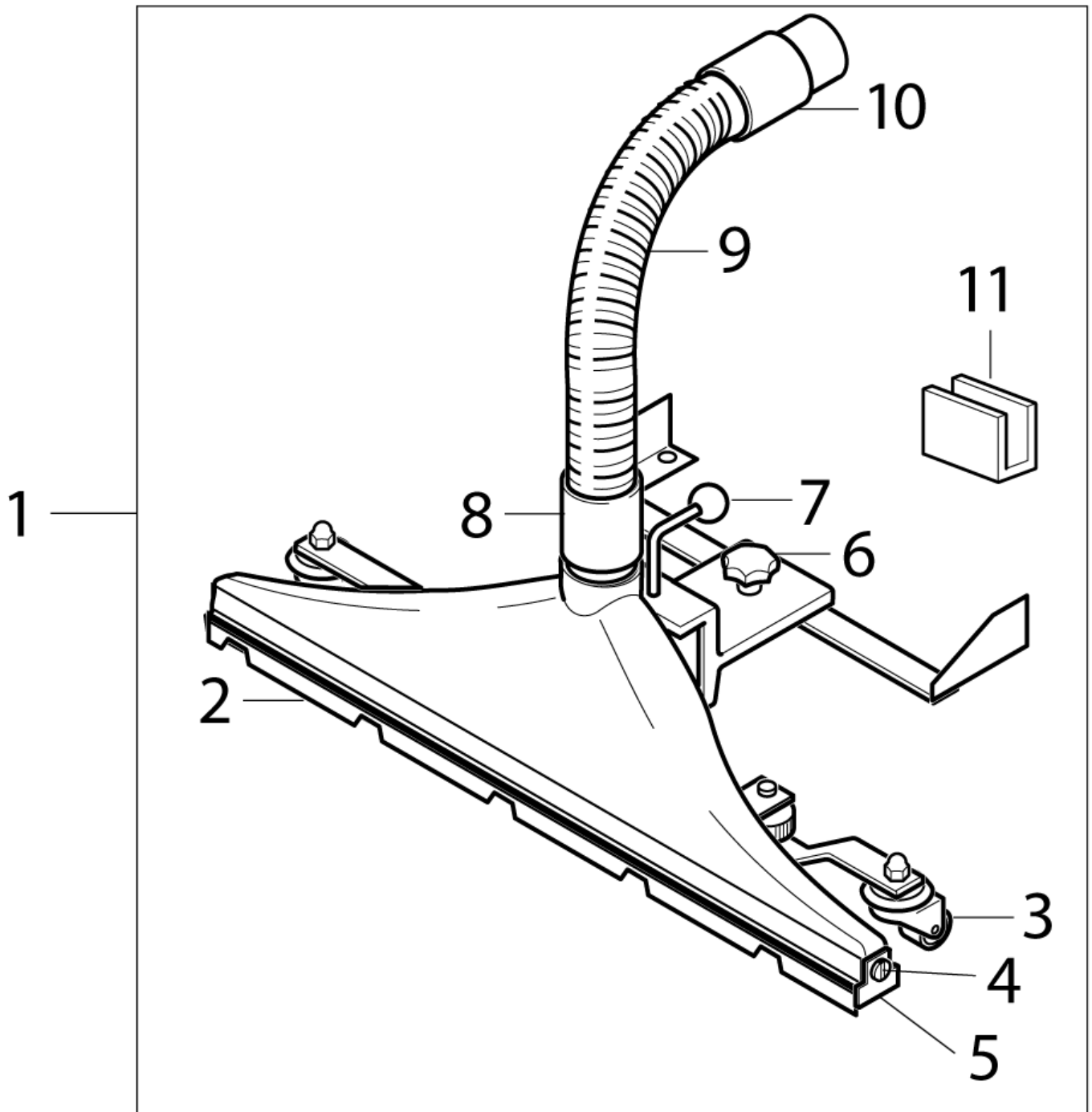
# Large fixed floor nozzle

WAP/KEW acces. vacs, health & Safety

05-04-2011

StyMiste ID  
ACCESWD16

38



# Large fixed floor nozzle

WAP/KEW acces. vacs, health & Safety

05-04-2011

StyMiste ID  
ACCESWD16

39

Pos	Vare nr.	Ant	Beskrivelse	EAN
1	302001481	1	SUCTION NOZZLE B1 600MM " ATTIX	4005337061
1	302002886	1	KØREMUNDSTYKKE ATTIX 9	4005337131
2	15814	1	GUMMILISTE F. 29194 60 CM	4005337158
3	6458	2	HJUL F. GULVMUNDSTYKKE	4005337064
4	6445	2	SCREW M6X5	4005337064
5	6444	2	SEALING PLATE	4005337064
6	6452	1	KNOB M8	4005337064
7	6455	1	SPHERICAL HANDLE Ø32 C M1	4005337064
8	42956	1	HOSE SLEEVE	4005337429
9	7599	1	ANTISTATISK SLANGE PR.MTR	4005337075
10	15101	1	MUFFE Ø50	for 302002886 - type 22 4005337151
10	42955	1	HOSE SLEEVE	for 29194 and 302001481 4005337429

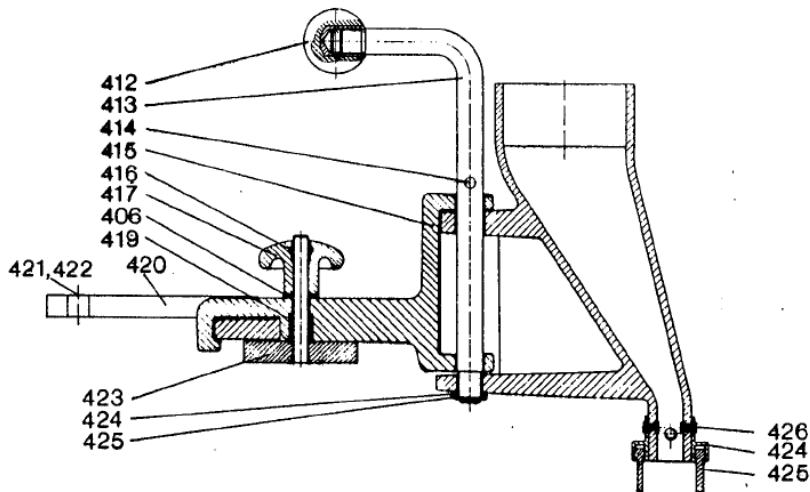
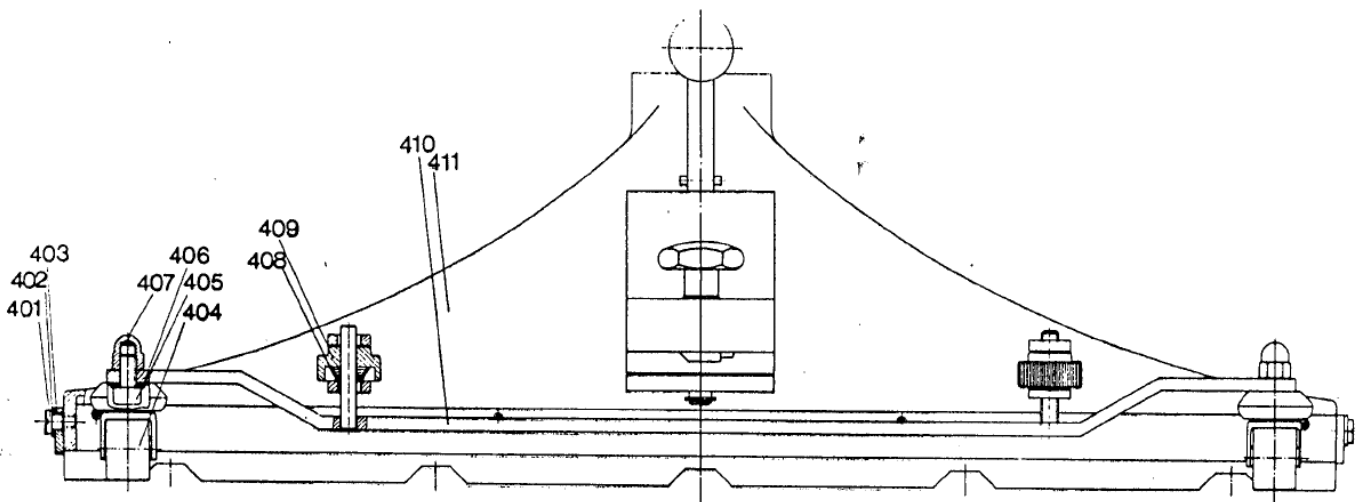
# Large fixed floor nozzle 2

WAP/KEW acces. vacs, health & Safety

05-04-2011

StyMiste ID  
TURBOD12

40



12900884

# Large fixed floor nozzle 2

WAP/KEW acces. vacs, health & Safety

05-04-2011

StyMiste ID

TURBOD12

41

Pos	Vare nr.	Ant	Beskrivelse	EAN
400	29194	1	KØREMUNDSTYKKE 600MM SQ	4005337291
401	6445	1	SCREW M6X5	4005337064
403	6444	1	SEALING PLATE	4005337064
404	6458	1	HJUL F. GULVMUNDSTYKKE	4005337064
406	2762	1	SKIVE	4005337027
408	3700	1	PRESSURE SPRING 1,0 X10,3	4005337037
409	6456	1	KNURLED THUMB NUT	4005337064
411	29194	1	KØREMUNDSTYKKE 600MM SQ	4005337291
412	6455	1	SPHERICAL HANDLE Ø32 C M1	4005337064
413	6426	1	CONNECTING ROD	4005337064
414	8860	1	PARALLEL PIN 4 M6X20 IS	4005337088
415	6424	1	CLAMPING FIXTURE	4005337064
416	6716	1	O-RING 7.1X2.0 DIN 3770 NBR70	4005337067
417	6452	1	KNOB M8	4005337064
419	6459	1	SPRING	4005337064
420	14924	1	CLAMPING FIXTURE	4005337149
421	2753	1	SKRUE	4005337027
422	2798	1	FJEDERRING	4005337027
424	2767	1	PAKNING 10,5X2	4005337027
425	8782	1	SIKRINGSSKIVE	4005337087
426	6714	1	RIVET 3,2X9,5 ISO 14589 A	4005337067
427	10197	1	RETAINING RAIL	4005337101
429	7599	1	ANTISTATISK SLANGE PR.MTR	4005337075

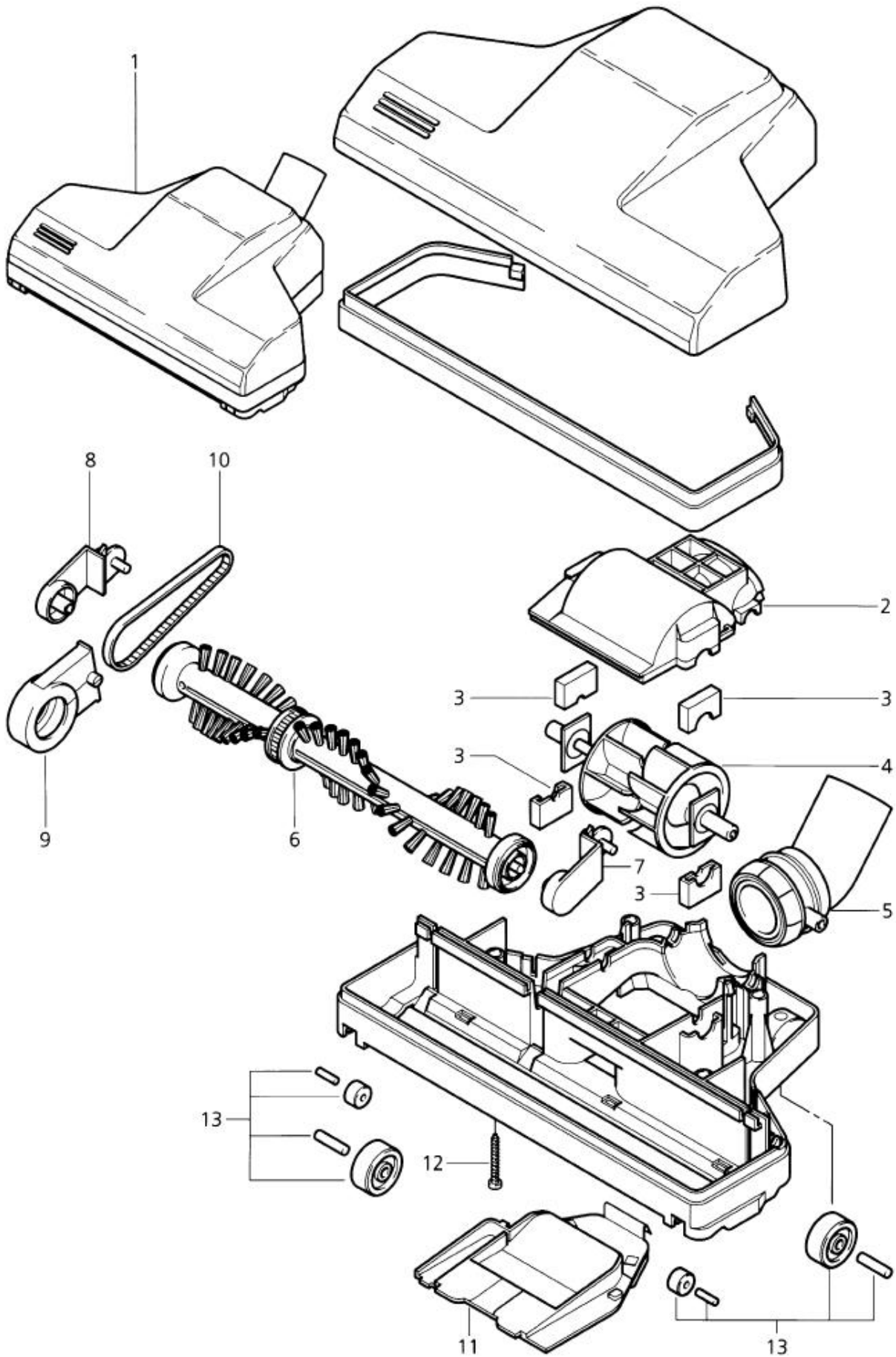
# Turbo Nozzle

WAP/KEW acces. vacs, health & Safety

05-04-2011

StyMiste ID  
ACCESWD18

42



# Turbo Nozzle

WAP/KEW acces. vacs, health & Safety

05-04-2011

StyMiste ID  
ACCESWD18

43

Pos	Vare nr.	Ant	Beskrivelse	EAN
1	54118	1	TURBINE-MUNDSTYKKE Ø36	4005337541
3	54120	1	BEARING 20X14	4005337541
4	54123	1	TURBINE HJUL	4005337541
5	54121	1	PIVOT JOINT	4005337541
6	54126	1	BRUSH ROLLER	4005337541
10	54118	1	TURBINE-MUNDSTYKKE Ø36	4005337541
11	54122	1	COVER BOTTOM -TSB- ABS	4005337541
12	11255	1	SCREW 3.5X30	4005337112
13	54148	1	WHEEL KIT	4005337541