

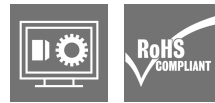
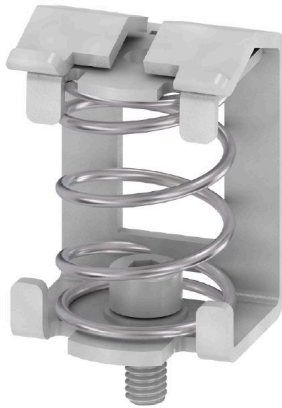
**KLBU 4-13.5 SC****Weidmüller Interface GmbH & Co. KG**

Klingenbergstraße 26

D-32758 Detmold

Germany

www.weidmueller.com



The shield clamping saddles for direct mounting can be easily and conveniently attached directly to the mounting plate. The products differ in the range of the cable diameter and the thread for fastening the shield clamping saddles.

**General ordering data**

Version	Clamping yoke, Clamping yoke, Steel
Order No.	<a href="#">1712311001</a>
Type	KLBU 4-13.5 SC
GTIN (EAN)	4032248032358
Qty.	10 items

## KLBUE 4-13.5 SC

Weidmüller Interface GmbH &amp; Co. KG

Klingenbergstraße 26

D-32758 Detmold

Germany

www.weidmueller.com

## Technical data

## Approvals

ROHS	Conform
------	---------

## Dimensions and weights

Depth	31.45 mm	Depth (inches)	1.2382 inch
Height	22 mm	Height (inches)	0.8661 inch
Width	20.1 mm	Width (inches)	0.7913 inch
Mounting dimension - width	18.9 mm	Net weight	17.3 g

## Temperatures

Storage temperature	-25 °C...55 °C	Ambient temperature	-5 °C...40 °C
Continuous operating temp., min.	-60 °C	Continuous operating temp., max.	130 °C

## Environmental Product Compliance

RoHS Compliance Status	Compliant without exemption		
REACH SVHC	No SVHC above 0.1 wt%		
Product Carbon Footprint	Cradle to gate	0.107 kg CO2 eq.	

## Material data

Basic material	Steel	Colour	silver
UL 94 flammability rating	None		

## System specifications

Version	For a shield connection	End cover plate required	No
Mounting rail	Mounting plate		

## Additional technical data

Type of fixing	Snap-on	Installation advice	Direct mounting
Explosion-tested version	No	Type of mounting	Screw

## Conductors for clamping (rated connection)

Stripping length	22 mm	Type of connection	Spring connection
Cable diameter, max.	13.5 mm	Cable diameter, min.	4 mm
Connection cross-section, stranded, max.	13.5 mm <sup>2</sup>	Connection cross-section, stranded, min.	4 mm <sup>2</sup>

## Dimensions

Length of thread	5.3 mm	Pitch in mm (P)	20.00 mm
------------------	--------	-----------------	----------

## General

Installation advice	Direct mounting	Mounting rail	Mounting plate
---------------------	-----------------	---------------	----------------

## Rating data

Rated cross-section	10 mm <sup>2</sup>
---------------------	--------------------

**KLBUE 4-13.5 SC**

**Weidmüller Interface GmbH & Co. KG**  
Klingenbergstraße 26  
D-32758 Detmold  
Germany

**Technical data**

[www.weidmueller.com](http://www.weidmueller.com)

**Classifications**

ETIM 6.0	EC002020	ETIM 7.0	EC002020
ETIM 8.0	EC002020	ETIM 9.0	EC002020
ETIM 10.0	EC002020	ECLASS 9.0	27-14-11-50
ECLASS 9.1	27-14-11-50	ECLASS 10.0	27-14-11-50
ECLASS 11.0	27-14-11-50	ECLASS 12.0	27-14-11-50
ECLASS 13.0	27-25-01-20	ECLASS 14.0	27-25-01-20
ECLASS 15.0	27-25-01-20		