

## HDC 06B SLU 1M20G

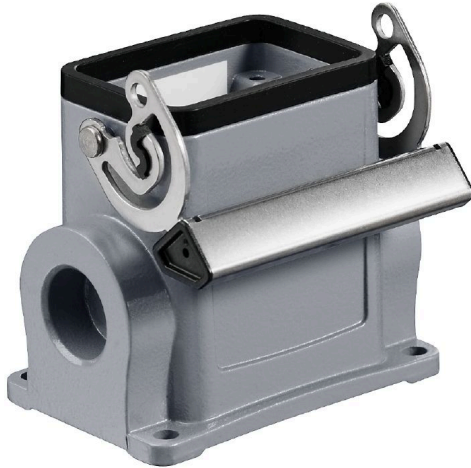
**Weidmüller Interface GmbH & Co. KG**

Klingenbergstraße 26

D-32758 Detmold

Germany

[www.weidmueller.com](http://www.weidmueller.com)



The special die-cast alloy and the multi-layered surface sealing provide complete protection for the HDC housings.

The cleverly designed interlock system is manufactured from stainless steel. This guarantees a long lifespan with high resistance to corrosion and impact.

The housing interlock system provides integrated safety. Our unique, patented spring system provides the housing interlock with a secure grip and prevents accidental opening.

The laser marking allows for easy and quick identification. Each housing is permanently labelled with a laser marking so that each product can be quickly designated and positioned.

Weidmüller RockStar® IP 65 / NEMA Type 4X housings - your first choice for industrial housings with IP 65 protection.

### General ordering data

Version	HDC enclosures, Installation size: 3, Protection degree: IP65, in plugged condition, Base housing, End-locking clamp, lower side, Standard, without cover, Size of cable entries: M 20
Order No.	<a href="#">1900460000</a>
Type	HDC 06B SLU 1M20G
GTIN (EAN)	4032248585939
Qty.	1 items

**HDC 06B SLU 1M20G**

**Weidmüller Interface GmbH & Co. KG**  
 Klingenbergstraße 26  
 D-32758 Detmold  
 Germany

www.weidmueller.com

**Technical data**

**Approvals**

Approvals



ROHS	Conform
UL File Number Search	<a href="#">UL Website</a>
Certificate No. (cURus)	E92202

**Dimensions and weights**

Height	54 mm	Height (inches)	2.126 inch
Width	71.7 mm	Width (inches)	2.8228 inch
Mounting dimension - height	40 mm	Mounting dimension - width	70 mm
Net weight	225 g		

**Temperatures**

Limit temperature	-40 °C ... 125 °C
-------------------	-------------------

**Environmental Product Compliance**

RoHS Compliance Status	Compliant without exemption
REACH SVHC	Potassium perfluorobutane sulfonate 29420-49-3
SCIP	e98b2b24-ba23-41bf-8d19-0dda3647412f

Chemical resistance	Substance	Acetone
	Chemical resistance	Conditionally resistant
	Substance	Drilling oil
	Chemical resistance	Resistant
	Substance	Diesel
	Chemical resistance	Resistant
	Substance	Ethyl alcohol
	Chemical resistance	Resistant
	Substance	Transmission oil
	Chemical resistance	Resistant
	Substance	Hydraulic oil
	Chemical resistance	Resistant
	Substance	Coolant
	Chemical resistance	Resistant
	Substance	Petroleum benzene
	Chemical resistance	Resistant
	Substance	Sweat
	Chemical resistance	Resistant
	Substance	Premium gasoline
	Chemical resistance	Conditionally resistant
Substance	Water	
Chemical resistance	Resistant	
Substance	UV	
Chemical resistance	Unstable	
Substance	Ozone	
Chemical resistance	Unstable	

**Dimensions**

Hole pitch length A2	70 mm	Cable entry	w. thread
Width housing C	43 mm	Width base C1	54.5 mm

## HDC 06B SLU 1M20G

**Weidmüller Interface GmbH & Co. KG**  
 Klingenbergstraße 26  
 D-32758 Detmold  
 Germany

www.weidmueller.com

## Technical data

Total length housing	60 mm	Height of housing B	54 mm
Height of base B1	5 mm		

### General data

Tightening torque	1.2 Nm	Housing main material	diecast aluminium
Surface finish	Powder coating	Protection degree	IP65, in plugged condition
EMC housings	No	Material of locking element	Stainless steel, rust-proof

### Version

Size of cable entries	M 20	Top part/bottom part/lid	lower part
Tightening torque	1.2 Nm	Number of cable entry on top	0
Number of cable entry sideways	1	Design of cover	without cover
Design of housing	Base housing	Design of locking system	End-locking clamp, lower side
Design	Standard	Installation size	3
Cable entry	w. thread	Type	Base housing
Clamp version	End-locking clamp	Sealing	NBR
Internal thread	M 20	Colour (RAL)	RAL 7035
BG	3	Suitable for ModuPlug®	No

### Classifications

ETIM 6.0	EC000437	ETIM 7.0	EC000437
ETIM 8.0	EC000437	ETIM 9.0	EC000437
ETIM 10.0	EC000437	ECLASS 9.0	27-44-02-02
ECLASS 9.1	27-44-02-02	ECLASS 10.0	27-44-02-02
ECLASS 11.0	27-44-02-02	ECLASS 12.0	27-44-02-02
ECLASS 13.0	27-44-02-02	ECLASS 14.0	27-44-02-02
ECLASS 15.0	27-44-02-02		

**HDC 06B SLU 1M20G**

**Weidmüller Interface GmbH & Co. KG**  
Klingenbergstraße 26  
D-32758 Detmold  
Germany

**Drawings**

[www.weidmueller.com](http://www.weidmueller.com)

