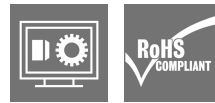
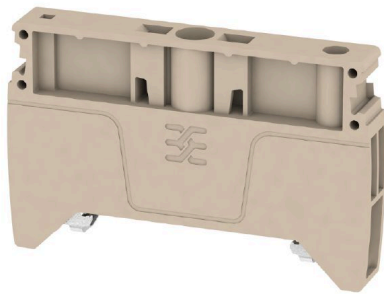


**AEB 35 SC/1****Weidmüller Interface GmbH & Co. KG**Klingenbergstraße 26  
D-32758 Detmold  
Germany

www.weidmueller.com

**Product image**

Weidmüller's range of products includes end brackets that guarantee a permanent, reliable mounting on the terminal rail and prevent sliding. Versions with and without screws are available. The end brackets include marking options, also for group markers, and also a test plug holder.

**General ordering data**

Version	A-series, End bracket
Order No.	<a href="#">1991920000</a>
Type	AEB 35 SC/1
GTIN (EAN)	4050118376722
Qty.	50 items

## AEB 35 SC/1

Weidmüller Interface GmbH & Co. KG  
Klingenbergstraße 26  
D-32758 Detmold  
Germany

www.weidmueller.com

## Technical data

## Approvals

ROHS	Conform
------	---------

## Dimensions and weights

Depth	36 mm	Depth (inches)	1.4173 inch
Height	58 mm	Height (inches)	2.2835 inch
Width	8 mm	Width (inches)	0.315 inch
Net weight	12.8 g		

## Temperatures

Storage temperature	-25 °C...55 °C	Ambient temperature	-5 °C...40 °C
Continuous operating temp., min.	-60 °C	Continuous operating temp., max.	130 °C

## Environmental Product Compliance

RoHS Compliance Status	Compliant without exemption
REACH SVHC	No SVHC above 0.1 wt%

## Material data

Basic material	WEMID GF 30	Colour	dark beige
UL 94 flammability rating	V-0		

## System specifications

Version	For the terminals	Mounting rail	TS 35
---------	-------------------	---------------	-------

## Additional technical data

With snap-in pegs	No	Open sides	closed
Snap-on	No	Installation advice	Rail
Type of mounting	when screwed in	Locking	for screw fixing

## Conductors for clamping (rated connection)

Tightening torque, max.	1 Nm	Tightening torque, min.	0.5 Nm
-------------------------	------	-------------------------	--------

## General

Installation advice	Rail	Mounting rail	TS 35
---------------------	------	---------------	-------

## Classifications

ETIM 6.0	EC001041	ETIM 7.0	EC001041
ETIM 8.0	EC001041	ETIM 9.0	EC001041
ETIM 10.0	EC001041	ECLASS 9.0	27-14-11-35
ECLASS 9.1	27-14-11-35	ECLASS 10.0	27-14-11-35
ECLASS 11.0	27-14-11-35	ECLASS 12.0	27-14-11-35
ECLASS 13.0	27-25-03-02	ECLASS 14.0	27-25-03-02
ECLASS 15.0	27-25-03-02		