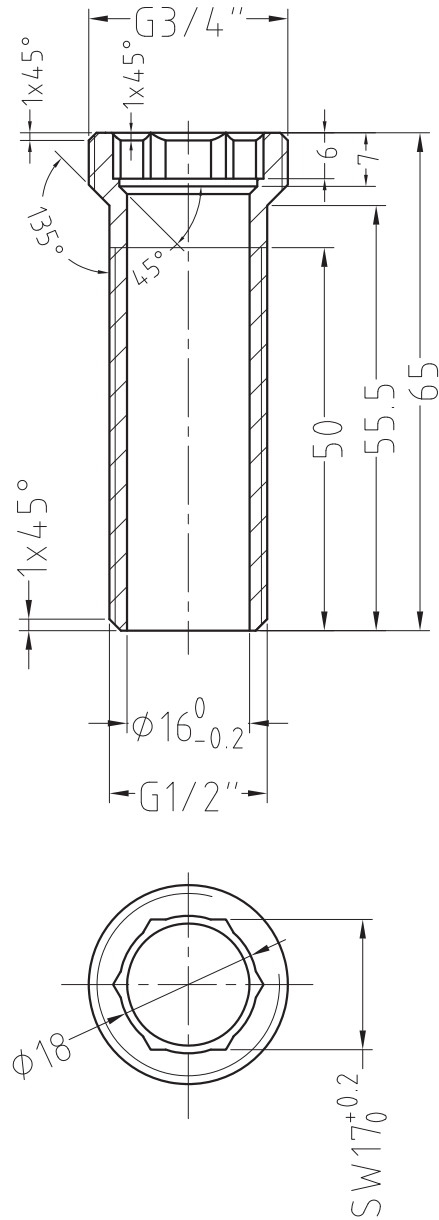


Production drawing



Note:

1. Material: CW617N
2. No sharp corners and no burrs; unspecified chamfer: 0.2 x 45°
3. Thread: ISO 228-1, B grade, Go gauge and no go gauge control, no go gauge allows 1.5 turn in.
4. Surface treatment: nickel plated 2-5um, chrome plated 0.3um+
5. Unspecified tolerance: ISO 2768-m.



Stone Industrial Co.,Ltd.

Shi Dai Guang Chang 7-H,
No.2 Zong Fu Lu,
Chengdu,CN- 610016,China
TEL:+86 28 8666 2540
FAX:+86 28 8666 2034

26415 08