

**SPC42**

- ✔ 8 - 40 zones
- ✔ 4 doors / readers
- ✔ 32 wireless zones
- ✔ 4 Areas
- ✔ 100 Users in total
- ✔ Ethernet dialer onboard

**SPC52/SPC53**

- ✔ 8 - 128 zones
- ✔ 16 doors / readers
- ✔ 64 wireless zones
- ✔ 16 Areas
- ✔ 500 Users in total
- ✔ Ethernet dialer onboard

**SPC63**

- ✔ 8 - 512 zones
- ✔ 64 doors / readers
- ✔ 64 wireless zones
- ✔ 60 Areas
- ✔ 2500 Users in total
- ✔ Ethernet dialer onboard

**G2 Cabinet**

- ✔ Available as SPC42 and SPC52 series, SPCP332 Smart PSU
- ✔ Fits 7Ah 12V battery
- ✔ Room for 1 expander board

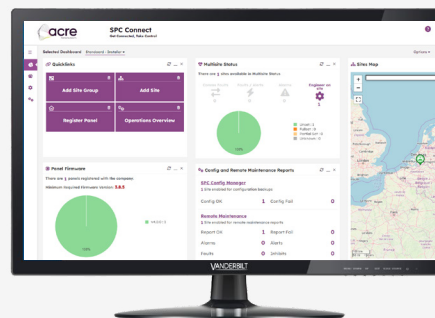
**G3 Cabinet**

- ✔ Available as SPC53 and SPC63 series, SPCP333 Smart PSU
- ✔ Fits 17Ah 12V battery
- ✔ Room for 4 expander boards

**G5 Cabinet**

- ✔ Available as SPC5350 and SPC6350 series, SPCP355 Smart PSU
- ✔ Fits 2x 27Ah 12V batteries
- ✔ Room for 6 expander boards
- ✔ VdS Class C

**SPC Connect Management Platform**



- ✔ Cloud-based application
- ✔ Access through web browser
- ✔ Encrypted communication between panel and cloud (FlexC 256bit AES)
- ✔ Support of full SPC panel range (min. Fw .3.8.5)
- ✔ SPC Connect Pro tool support

**Installer Benefits**

- ✔ Secured remote access from everywhere at any time via Web portal
- ✔ Company structure
- ✔ Installer/Engineer Management
- ✔ Firmware upgrade management
- ✔ Remote maintenance reports
- ✔ Remote programming
- ✔ Configuration backups
- ✔ Communication monitoring
- ✔ Multi-site user management
- ✔ Support for Multi-site operations

**End User Benefits**

- ✔ Secured remote access from everywhere at any time via Web portal and mobile App
- ✔ Alarm verification via mobile (optional)
- ✔ Email and push notification
- ✔ Multi-site support
- ✔ Remote Panel User Management

KEYPADS AND X-BUS PERIPHERAL

**Keypads** - Provide simple intuitive interfaces into the SPC system

**SPCK42x**

- ✔ Standard keypad
- ✔ 2x16 characters
- ✔ Optional EM card reader (421 model)
- ✔ Branded and non branded available
- ✔ EN Grade 3

**SPCK52x**

- ✔ Compact keypad
- ✔ 128x64 pixels graphical display
- ✔ Blue illuminated touch key keys
- ✔ Optional EM + MIFARE card reader (521 model)
- ✔ Thinnest security keypad on the market (17.5mm)
- ✔ Flush mount kit available
- ✔ Customizable logo in display
- ✔ EN Grade 3 & VdS C
- ✔ Embedded speaker (521 model)

**SPCK62x**

- ✔ Comfort keypad
- ✔ 128x64 pixels graphical display
- ✔ 15 user keys, 4 multi function keys and 1 navigation key
- ✔ Customizable logo in display
- ✔ Optional EM card reader (623 model)
- ✔ Embedded speaker/mic (623 model)
- ✔ EN Grade 3 & VdS C

**PSUs** - Monitored local power source for battery management and connected security devices

**SPCP332**

- ✔ Smart PSU with 8 inputs, 2 outputs in G2 housing. Also available in G3 (SPCP333) and G5 (SPCP355) housing

**SPCP432**

- ✔ Smart PSU with 2 door expander in G2 housing. Also available in G3 (SPCP433)

**Communications** - Modules that enable communication via PSTN, 2G/3G/4G with central monitoring stations (CMS)

**SPCN110**

- ✔ PSTN Plug-on module for SPC panels

**SPCN320 / SPCN342**

- ✔ 2G/3G/4G GSM/GPRS Plug-on module for SPC panels (max. 2 per panel)

**Mobile App**

**SPC Connect**

(available in iOS and Android stores)

- ✔ Set, monitor, control. Any device, any location
- ✔ Door control
- ✔ User defined output control
- ✔ Multi-site support
- ✔ Control of SPC system
- ✔ Status of system
- ✔ Arming control
- ✔ Push notification
- ✔ Audio and video verification

**Expanders & Gateways** - Provide extended output capacity to the SPC system, Including advanced door control and wireless functionality

**SPCE652**

- ✔ 8 input, 2 output expander (PCB only version also available)

**SPCE452**

- ✔ 8 output expander

**SPCA210**

- ✔ 2 door / reader expander

**SPCE110**

- ✔ Keyswitch with 3 positions 2 tri-colour LEDs

**SPCE120**

- ✔ Indication expander with 16 LEDs, 4 function keys & EM card reader

**SPCW120**

- ✔ Wireless RF expander for wireless devices - for panel