



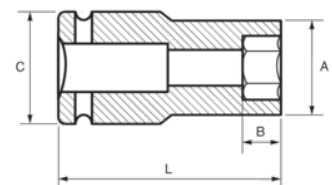
174-17-2/174-41-2

3/4" Impact Sockets Hex Deep
Metric





PRODUCT DETAILS

- 3/4" impact sockets, long series
- High performance Cr-Mo alloy steel
- Phosphate finish
- To be used with machines
- To be used with retaining ring
- Dynamic-Drive profile to protect nuts
- Standards: UNE 16507, DIN 3129, ISO 2725



PRODUCT ATTRIBUTES

| Product |  | A | B | C | L |  |
|-----------------|---|----------|----------|----------|----------|---|
| 174-17-2 | 17 mm | 30 mm | 23 mm | 44 mm | 90 mm | 560 g |
| 174-19-2 | 19 mm | 33 mm | 23 mm | 44 mm | 90 mm | 600 g |
| 174-21-2 | 21 mm | 35 mm | 23 mm | 44 mm | 90 mm | 680 g |
| 174-22-2 | 22 mm | 36 mm | 23 mm | 44 mm | 90 mm | 700 g |
| 174-24-2 | 24 mm | 38 mm | 23 mm | 44 mm | 90 mm | 750 g |
| 174-27-2 | 27 mm | 41 mm | 23 mm | 44 mm | 90 mm | 800 g |
| 174-30-2 | 30 mm | 46 mm | 27 mm | 44 mm | 90 mm | 898 g |
| 174-32-2 | 32 mm | 48 mm | 27 mm | 44 mm | 90 mm | 957 g |
| 174-33-2 | 33 mm | 50 mm | 27 mm | 44 mm | 90 mm | 1010 g |
| 174-34-2 | 34 mm | 51 mm | 27 mm | 44 mm | 90 mm | 1030 g |
| 174-36-2 | 36 mm | 55 mm | 27 mm | 44 mm | 90 mm | 1084 g |
| 174-41-2 | 41 mm | 59 mm | 28 mm | 44 mm | 90 mm | 1270 g |