



DESCRIPTION

The CT Leader range is designed for general purpose applications, such as UPS, alarmsystem, telecom and technical utilities. The batteries comply to Eurobat guide Standard Commercial and have a design life of 3-5 years.

FEATURES

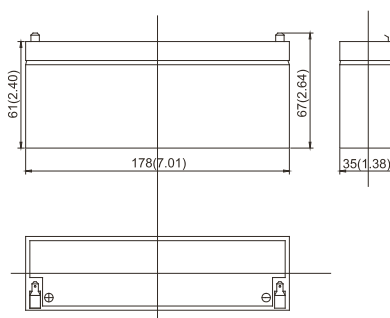
- Valve Regulated Lead Acid Batteries, [AGM].
- Positive and negative plates in lead-calcium alloy.
- Sealed construction
- Maintenance free operation
- 3-5 years design life according to Eurobat Guide - Standard commercial
- Low pressure venting system
- Low selfdischarge
- Six month shelf life at +20° C
- U.L. component recognition
- VdS approved

SPECIFICATIONS

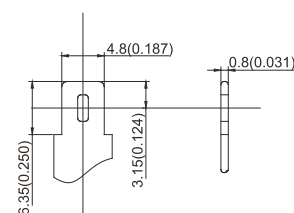
Model	CT2.3-12
Nominal voltage	12 V
Number of cells	6
Nominal capacity +25° C	
20 hour rate (0,115 A - 10,5V)	2,3 Ah
10 hour rate (0,2A - 10,5V)	2 Ah
5 hour rate (0,37 A - 10,5 V)	1,85 Ah
1 hour rate (1,46 A - 9,60V)	1,46 Ah
Internal resistance	60 mOhm
Self discharge	3% of capacity decline per month at +20° C
Operating temperature range	
Discharge	-20 to +60° C
Charge	-10 to +60° C
Storage	-20 to +60° C
Max discharge current (5 sec)	34,5 A
Short circuit current	115 A
Max. charge current	0,92 A
Charging methods at +20° C	
Cycle use	
Constant voltage charge	14,4 - 14,7 V
Temperature compensation	-30 mV/° C
Stand-by use	
Constant voltage charge	13,6 - 13,8 V
Temperature compensation	-20 mV/° C

DIMENSIONS AND WEIGHT

Lenght	178 mm
Width	35 mm
Height	61 mm
Total height	67 mm
Weight	0,99 kg



TERMINAL DIMENSIONS





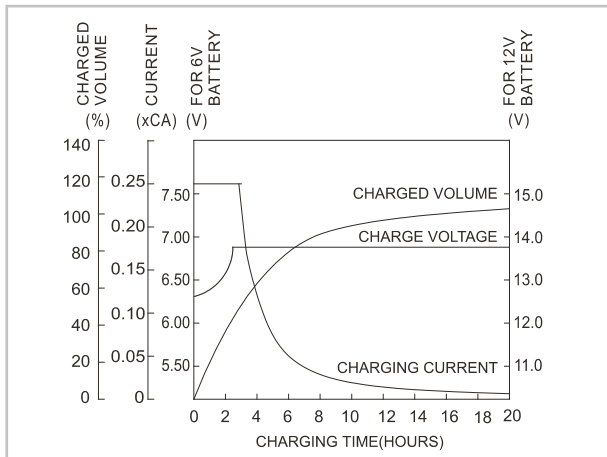
DISCHARGE DATA (AMPERES AT +25 °C)

End voltage (V/cell)	5 min	10 min	15 min	30 min	1 h	3 h	5 h	10 h	24 h
1,60	9,00	5,70	4,40	2,50	1,46	0,59	0,41	0,22	0,120
1,65	8,64	5,47	4,27	2,41	1,38	0,57	0,40	0,22	0,120
1,70	8,27	5,23	4,13	2,29	1,29	0,54	0,39	0,21	0,120
1,75	7,89	4,98	3,98	2,16	1,19	0,49	0,37	0,20	0,115
1,80	7,50	4,72	3,82	2,02	1,08	0,45	0,34	0,18	0,103

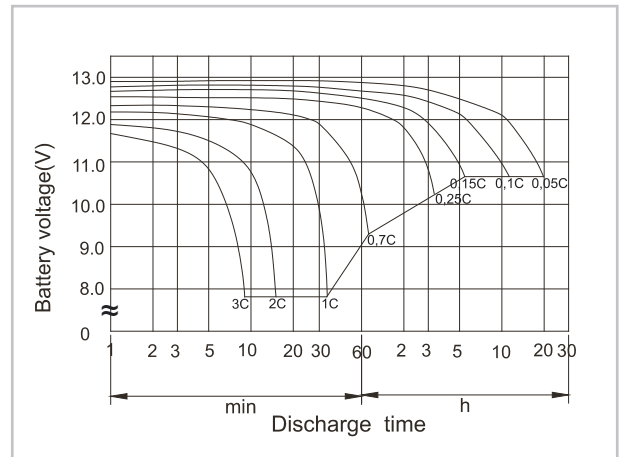
DISCHARGE DATA (WATTS PER CELL AT +25 °C)

End voltage (V/cell)	5 min	10 min	15 min	30 min	1 h	3 h	5 h	10 h	24 h
1,60	17,5	11,00	8,50	4,83	3,50	2,78	1,54	1,08	0,75
1,65	16,7	10,50	8,14	4,52	3,38	2,46	1,45	1,04	0,74
1,70	16,0	10,00	7,86	4,28	3,25	2,28	1,35	0,98	0,73
1,75	15,3	9,46	7,56	4,02	3,11	2,09	1,14	0,93	0,71
1,80	14,4	8,94	7,24	3,74	3,00	1,86	1,02	0,84	0,62

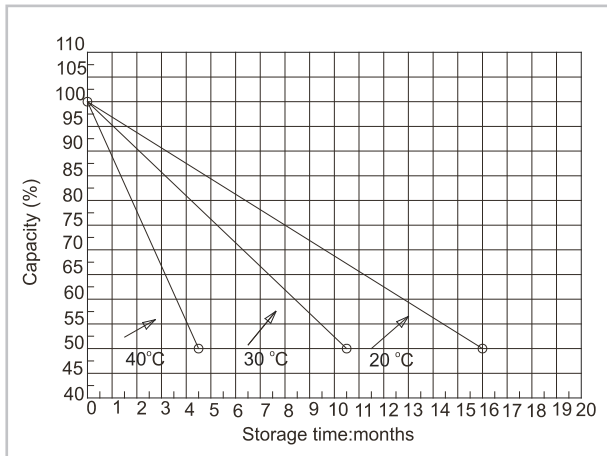
CHARGE CHARACTERISTIC



DISCHARGE CHARACTERISTIC (+25 °C)



SELF DISCHARGE



STATE OF CHARGE IN RELATION TO VOLTAGE

