

## PRODUCT DATASHEET

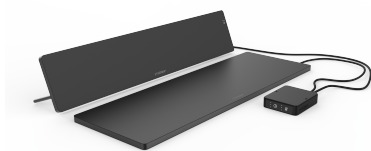
**Type:** LAVA-DESK-ZONE-B  
**Art. Nr.:** 46381



9120129931878

### Short description

Workplace heating, Set consisting of LAVA-DESK TOP & SUB, Black, 230V



### Product Description

Cozy, comfortable warmth at the workplace and desk - individually adapted to the needs of the individual? The LAVA<sup>®</sup> DESK ZONE set, consisting of the innovative and elegant LAVA<sup>®</sup> DESK TOP and LAVA<sup>®</sup> DESK SUB desk infrared heaters, creates an individual yet extremely efficient heat zone directly at the desk. With LAVA<sup>®</sup> DESK TOP, particular attention has been paid to design, efficiency and optimum integration on the desk. Free-standing on the desk, it integrates perfectly, looks like an elegant design element and provides warmth for the hands and upper body. In combination with the LAVA<sup>®</sup> DESK SUB, which allows four simple and flexible mounting options under the desk and thus heats the lower body, you create a cozy heat zone. Both infrared panels - which are also available separately - work best together and are extremely efficient, as the heat effect can be felt immediately after switching on thanks to the new GRP technology. This means that the ambient temperature can be significantly reduced and workplaces can only be heated when they are actually in use - without sacrificing the individual comfort of employees. Studies (TU Dresden) show that considerable cost savings of up to 30 % can be achieved and that a workplace can be heated for as little as EUR 50 per year. Both devices can be controlled intuitively using the timer function and the LAVA<sup>®</sup> DESK SUB can also be controlled in three dimming levels - in the case of the LAVA<sup>®</sup> DESK TOP directly on the device and in the case of the LAVA<sup>®</sup> DESK SUB using a separate control element on the plug cable. Total output 140 W, available in white RAL 9016 and black RAL 9005, device depth: 14 mm, protection rating: IP 21, protection class II, 230 V.

### ETIM characteristics

<b>Type of IR radiation</b>	IR-C	<b>Power consumption</b>	140 Watt
<b>Mounting method</b>	Surface mounting	<b>Supply voltage</b>	230 230 Volt
<b>Mounting direction</b>	Horizontal	<b>Frequency supply voltage</b>	50 50 Hertz
<b>Suitable for ceiling mounting</b>	✘	<b>Max. surface temperature</b>	85 Degrees celsius
<b>Degree of protection (IP)</b>	IP21	<b>Height</b>	200 Millimetre
<b>Colour</b>	Black	<b>Width</b>	600 Millimetre
<b>With imprint</b>	✘	<b>Depth</b>	14 Millimetre
<b>With room temperature controller</b>	✓	<b>RAL-number</b>	9005
<b>With mounting material</b>	✓		
<b>With framework</b>	✘		
<b>Surface treatment</b>	Untreated		
<b>Surface structure front-side panel</b>	Smooth		
<b>With lighting cove</b>	✘		
<b>Dimmable</b>	✓		

Created on: 08/10/2024