

Testing made easy

WTL 6 SL EN / WTD 6 SL EN - CIRCUIT BREAKER D-CURVE

Current transformers may only be short-circuited or operated with a negligible load impedance because open current transformers “run hot” and destroy themselves. Apart from that, load impedances lead to measuring inaccuracies in electricity supply meters and hence to financial losses for their operators.

Many switching tasks can be done using the WTL 6 SL EN test/disconnect terminals and the WTD 6 SL EN feed-through terminals.

The screws for connecting the conductors are only accessible after the current transformer has been short-circuited with the help of the short-circuit slider. This guarantees that the measuring instrument is not accidentally disconnected.

In 230/400 V installations where the rated current for the over current protection in front of the meter is 63 A or above, measurement with current transformers must be used.

In 400/690 V installations, measurement with current and voltage transformers must be used.



Description	Type of terminal	Dimensions	EAN	QTY	Order No.
Type		Width x Length x Depth			
MÅLERKLEMRÆKKE 3-POL 2A D TRAFOMÅLING	WTL 6/3/STB	230 x 207x 96	73 5009 6610 007	1	7770016434

WTL 6/3

6 mm²



Width/Height/Depth	mm
max. current / max. cond. cross-section	A/mm ²
	mm ²

7.9 x 87 x 64
57 / 10
0.5...10



Technical Data

Rated data

Rated voltage	V
Rated current	A
Fire wire cross-section	mm ²

Rated impulse withstand voltage / Pollution Severity
Gauge to IEC 60947-1 / UL 94 flammability rating

Approvals

Clamped conductors (H05V/H07V)

Solid / Stranded	mm ²
Flexible / Flexible with ferrule	mm ²
Tightening torque range (terminal screw)	Nm
Stripping length / Blade size	mm/-

Technical Data

Miniature circuit-breaker Schneider

Number of protected poles / [In] rated Current
Network type / Curve code
Trip unit technology

Breaking capacity

50kA Icu conforming to EN/IEC 60947-2 - 220...240 V AC 50/60 Hz
50kA Icu conforming to EN/IEC 60947-2 - 380...415 V AC 50/60 Hz
[Uiamp] rated impulse withstand voltage

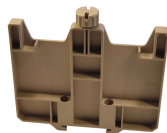
Connections - terminals

Double terminal, top or bottom rigid wire(s) 1-25 mm² max
Double terminal, top or bottom flexible wire(s) 1-16 mm² max
Wire stripping length
Tightening torque

Accessories

Type

WEW 35/1 Cover Holder (10 pcs/carton)



Cover 230x207x96 PC Lexan 141R Transp.



Screwdriver SD T10 TR X 80

IEC 60947-7-1

IEC	UL	CSA
500	300	300
41	45	45
6	AWG 20...8	AWG 20...8

6 kV / 3

A5 / V-0



Rated connection

0.5...10 / 0.5...10
0.5...10 / 0.5...6
1.0...1.6 (M 3.5)
12 / 0.8 x 4.0mm

3 / 2A

AC DC / D

Thermal-magnetic

6 kv to EN 60947-2

14 mm top or bottom

2 N.m top or bottom

Order No **EAN No.**

7770017900 73 50096 610021

7770017937 73 50096 610014

2749500000 40 5011 8895 827