

## RS RJ45

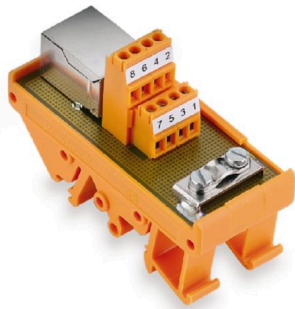
**Weidmüller Interface GmbH & Co. KG**

Klingenbergstraße 26

D-32758 Detmold

Germany

[www.weidmueller.com](http://www.weidmueller.com)



The RS RJ45 interface range is a simple and convenient alternative for connecting modems, routers, computers or other communication elements with existing components in electrical cabinets.

They can be used to adapt the shielded RJ45 8-pole connectors to screw connections, or for coupling 2 data lines. The modules can be attached to standard TS35 mounting rails.

### General ordering data

Version	Interface, RS RJ45, RJ45 plug-in connectors, 8-pole, Screw connection
Order No.	<a href="#">8611320000</a>
Type	RS RJ45
GTIN (EAN)	4032248272419
Qty.	10 items

## RS RJ45

Weidmüller Interface GmbH &amp; Co. KG

Klingenbergstraße 26

D-32758 Detmold

Germany

www.weidmueller.com

## Technical data

## Approvals

Approvals



ROHS Conform

UL File Number Search [UL Website](#)

Certificate No. (UR) E141197

## Dimensions and weights

Depth	48 mm	Depth (inches)	1.8898 inch
Height	70 mm	Height (inches)	2.7559 inch
Width	30 mm	Width (inches)	1.1811 inch
Net weight	34.88 g		

## Temperatures

Storage temperature	-40...70 °C	Operating temperature	0...55 °C
---------------------	-------------	-----------------------	-----------

## Environmental Product Compliance

RoHS Compliance Status	Compliant without exemption
REACH SVHC	No SVHC above 0.1 wt%

## Rated data UL

Rated current I <sub>N</sub>	1 A	Operating temperature UL, min.	-25 °C
Operating temperature UL, max.	50 °C	Rated current I <sub>max</sub>	1 A
Rated voltage U <sub>N</sub>	50 V		

## Connection Data

Transmission rate	Cat. 5, 100 MBit/s	Number of poles (control side)	8-pole
Connection (field side)	LM2N 3.5mm	Contact material (control side)	Phosphor-bronze 6μ AU
Earthing	Yes	Connection on control side	RJ45 plug-in connectors

## Rating data

Rated voltage	50 V	Rated current per connection	1 A
Total operating current	1.5 A		

## Insulation coordination (EN50178)

According to	DIN EN 50178	Rated insulation voltage	<50 V AC
Surge voltage category	III	Pollution severity level	2
Pulse voltage test (1,2/50μs)	0.8 kV	Insulation test voltage AC	0.35 kV

## Connection field

Min. wire cross-section, AWG	AWG 28	Type of connection	Screw connection
Sleeve with plastic collar, max.	0.75 mm <sup>2</sup>	Flexible with sleeve, min.	0.5 mm <sup>2</sup>
Flexible, max. H05(07) V-K	1.5 mm <sup>2</sup>	Flexible, min. H05(07) V-K	0.5 mm <sup>2</sup>
Solid, max. H05(07) V-U	1.5 mm <sup>2</sup>	Solid, min. H05(07) V-U	0.5 mm <sup>2</sup>
Stripping length	5 mm	Tightening torque, max.	0.25 Nm
Tightening torque, min.	0.2 Nm	Clamping range, max.	2.08 mm <sup>2</sup>

Creation date 20.10.2025 01:00:27 MEZ

Catalogue status / Drawings

## RS RJ45

**Weidmüller Interface GmbH & Co. KG**  
Klingenbergstraße 26  
D-32758 Detmold  
Germany

[www.weidmueller.com](http://www.weidmueller.com)

## Technical data

Clamping range, min.	0.08 mm <sup>2</sup>	Max. wire cross-section, AWG	AWG 14
----------------------	----------------------	------------------------------	--------

### Classifications

ETIM 6.0	EC002780	ETIM 7.0	EC002780
ETIM 8.0	EC002780	ETIM 9.0	EC002780
ETIM 10.0	EC002780	ECLASS 9.0	27-14-11-52
ECLASS 9.1	27-14-11-52	ECLASS 10.0	27-14-11-52
ECLASS 11.0	27-14-11-52	ECLASS 12.0	27-14-11-52
ECLASS 13.0	27-14-11-52	ECLASS 14.0	27-14-11-52
ECLASS 15.0	27-14-11-52		

**RS RJ45**

**Weidmüller Interface GmbH & Co. KG**  
Klingenbergstraße 26  
D-32758 Detmold  
Germany

**Drawings**

[www.weidmueller.com](http://www.weidmueller.com)

