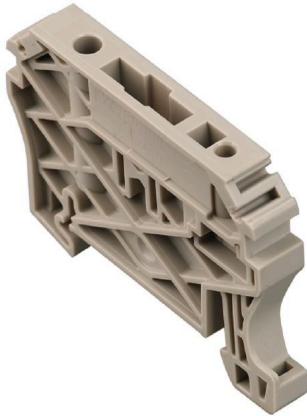


ZEW 35/2**Weidmüller Interface GmbH & Co. KG**Klingenbergstraße 26
D-32758 Detmold
Germany

www.weidmueller.com

Product image

Weidmüller's range of products includes end brackets that guarantee a permanent, reliable mounting on the terminal rail and prevent sliding. Versions with and without screws are available. The end brackets include marking options, also for group markers, and also a test plug holder.

General ordering data

Version	End bracket, dark beige, TS 35, V-2, Wemid, Width: 8 mm, 100 °C
Order No.	8630740000
Type	ZEW 35/2
GTIN (EAN)	4032248348916
Qty.	20 items

ZEW 35/2

Weidmüller Interface GmbH & Co. KG
Klingenbergstraße 26
D-32758 Detmold
Germany

www.weidmueller.com

Technical data

Approvals

ROHS	Conform
------	---------

Dimensions and weights

Depth	40 mm	Depth (inches)	1.5748 inch
Height	55 mm	Height (inches)	2.1654 inch
Width	8 mm	Width (inches)	0.315 inch
Net weight	7.4 g		

Temperatures

Ambient temperature	-5 °C...40 °C	Continuous operating temp., min.	-50 °C
Continuous operating temp., max.	100 °C		

Environmental Product Compliance

RoHS Compliance Status	Compliant without exemption		
REACH SVHC	No SVHC above 0.1 wt%		
Product Carbon Footprint	Cradle to gate	0.158 kg CO2 eq.	

Material data

Basic material	Wemid	Colour	dark beige
UL 94 flammability rating	V-2		

System specifications

Version	For the terminals	Mounting rail	TS 35
---------	-------------------	---------------	-------

Additional technical data

Installation advice	Direct mounting	Type of mounting	Snap-on
Locking	screwless		

Dimensions

TS 35 offset	41 mm
--------------	-------

General

Installation advice	Direct mounting	Mounting rail	TS 35
---------------------	-----------------	---------------	-------

Classifications

ETIM 6.0	EC001041	ETIM 7.0	EC001041
ETIM 8.0	EC001041	ETIM 9.0	EC001041
ETIM 10.0	EC001041	ECLASS 9.0	27-14-11-35
ECLASS 9.1	27-14-11-35	ECLASS 10.0	27-14-11-35
ECLASS 11.0	27-14-11-35	ECLASS 12.0	27-14-11-35
ECLASS 13.0	27-25-03-02	ECLASS 14.0	27-25-03-02
ECLASS 15.0	27-25-03-02		