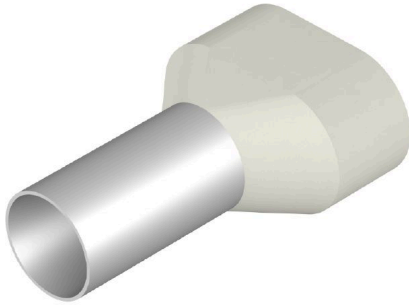


## H16,0/29T ZH W

**Weidmüller Interface GmbH & Co. KG**  
Klingenbergstraße 26  
D-32758 Detmold  
Germany

www.weidmueller.com



- supplied loose in poly-bag
- Weidmüller colour code
- DIN colour code

### General ordering data

Version	Wire-end ferrule, Twin wire-end ferrule, 20 mm, 16 mm, white
Order No.	<a href="#">9037730000</a>
Type	H16,0/29T ZH W
GTIN (EAN)	4008 190493554
Qty.	50 items
Packaging	loose

**Technical data**

**Approvals**

Approvals



ROHS	Conform
UL File Number Search	<a href="#">UL Website</a>
Certificate no. (cULus)	E499744

**Dimensions and weights**

Net weight	1.21 g
------------	--------

**Environmental Product Compliance**

RoHS Compliance Status	Compliant without exemption
REACH SVHC	No SVHC above 0.1 wt%

**Technical data**

Description of article	Twin wire end ferrule, white	Version	Twin wire-end ferrule
------------------------	------------------------------	---------	-----------------------

**Wire-end ferrules**

Contact surface diameter (D1)	8.3 mm	Contact surface length (L2)	16 mm
Collar width (B)	9.5 mm	Collar height (A)	17.2 mm
Plastic collar thickness (S2)	0.6 mm	L1 in mm	29.00 mm
Wire connection cross section AWG, max.	AWG 6	Metal sleeve thickness (S1)	0.3 mm
Stripping length	20 mm	Conductor cross-section	16 mm <sup>2</sup>
Colour code	Telemecanique		

**Classifications**

ETIM 6.0	EC000005	ETIM 7.0	EC000005
ETIM 8.0	EC000005	ETIM 9.0	EC000005
ETIM 10.0	EC000005	ECLASS 9.0	27-40-02-01
ECLASS 9.1	27-40-02-01	ECLASS 10.0	27-40-02-01
ECLASS 11.0	27-40-02-01	ECLASS 12.0	27-40-02-01
ECLASS 13.0	27-40-02-01	ECLASS 14.0	27-40-02-01
ECLASS 15.0	27-40-02-01		

Drawing

