



# CorePro LED tube Universal T8



## CorePro LEDtube UN 1200mm HO 18W840 T8

The new Philips CorePro LEDtube Universal T8 brings simplicity to your lighting project. You don't need to pay attention to the driver technology anymore. Thanks to a unique design, Philips CorePro LEDtube Universal T8 directly fits in luminaires operating either on Electro Magnetic ballasts or HF Electronic ballasts or mains power connection. So simple to operate and no need to carry double stock of products! Perfectly safe, reliable & easy to install Philips CorePro LEDtube Universal T8 is the ideal alternative to standard fluorescent tubes to save energy and lower investment.

### Product data

General Information		Flickering value (PstLM) - Flickering value as per EN 61000-3-3	
Cap-Base	G13 [Medium Bi-Pin Fluorescent]	Stroboscopic effect visibility measure (SVM)	0.9
Nominal lifetime	50,000 hour(s)	Photobiological safety according to EN 62471	RG0
Switching Cycle	50,000	<b>Operating and Electrical</b>	
Lighting Technology	LED	Line Frequency	50 to 60 Hz
Flux measurement reference	Sphere	Input Frequency	50 to 60 Hz
<b>Light Technical</b>		Power Consumption	18 W
Color Code	840 [CCT of 4000K]	Lamp Current (Nom)	100 mA
Beam Angle (Nom)	240 degree(s)	Starting Time (Nom)	0.5 s
Luminous Flux	2,000 lm	Warm-up time to 60% light	0.5 s
Luminous Efficacy (rated) (Nom)	111 lm/W	Power Factor (Fraction)	0.9
Color Designation	Cool White (CW)	Voltage (Nom)	220-240 V
Correlated Color Temperature (Nom)	4000 K	LED alternative to fluorescent lamp power	36 W
Color Consistency	<6	Inrush current at mains	9.4
Color rendering index (CRI)	80	Max. lamp no. on MCB B type 10A - Mains	82
LLMF At End Of Nominal Lifetime (Nom)	70 %		

## CorePro LED tube Universal T8

Max. lamp no. on MCB B type 10A – EM ballast without Compensation Capacitor.	104
Max. lamp no. on MCB B type 10A – EM ballast with Compensation Capacitor.	19
Max. lamp no. on MCB B type 16A – Mains	131
Max. lamp no. on MCB B type 16A – EM ballast without Compensation Capacitor.	166
Max. lamp no. on MCB B type 16A – EM ballast with Compensation Capacitor.	30
Ballast Compatibility	Universal

### Temperature

Ambient temperature range	-20 °C to 45 °C
T-Case Maximum (Nom)	55 °C

### Controls and Dimming

Dimmable	No
----------	----

### Mechanical and Housing

Bulb Finish	Frosted
Bulb Material	Glass
Product Length	1,200 mm
Bulb Shape	T8

### Approval and Application

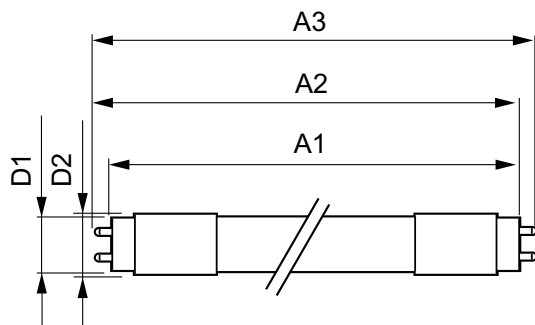
Energy Efficiency Class	E
-------------------------	---

Energy Saving Product	Yes
Approval Marks	RoHS compliance TUV CE marking KEMA Keur certificate
Energy Consumption kWh/1000 h	18 kWh
EPREL Registration Number	1315788
CE mark	Yes
EU RoHS compliant	Yes

### Product Data

Order product name	CorePro LEDtube UN 1200mm HO 18W840 T8
Full product name	CorePro LEDtube UN 1200mm HO 18W840 T8
Full product code	871869680168000
Order code	929001869302
Material Nr. (12NC)	929001869302
Numerator - Quantity Per Pack	1
Net Weight (Piece)	0.215 kg
EAN/UPC - Product/Case	8718696801680
Numerator - Packs per outer box	10
EAN/UPC - Case	8718696801697

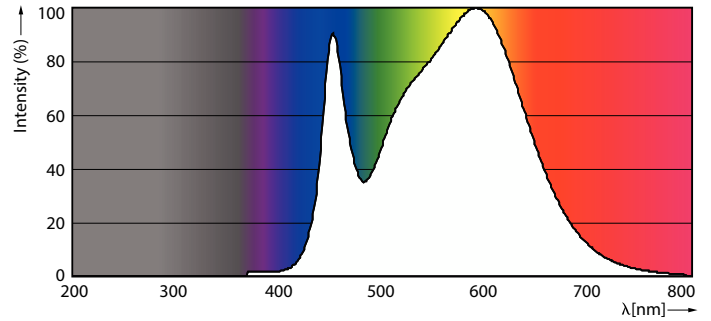
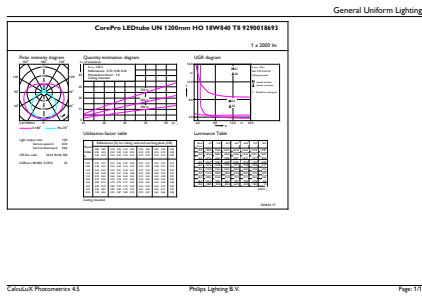
## Dimensional drawing



Product	D1	D2	A1	A2	A3
CorePro LEDtube UN 1200mm HO 18W840 T8	27.9 mm	28 mm	1,199.4 mm	1,205.3 mm	1,213.6 mm

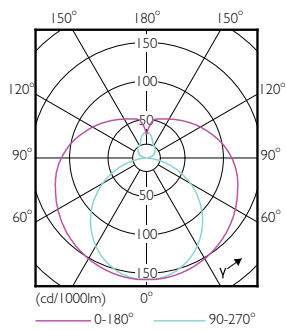
# CorePro LED tube Universal T8

## Photometric data



General uniform lighting - CorePro LEDtube UN 1200mm HO 18W840 T8

Spectral Power Distribution Colour - CorePro LEDtube UN 1200mm HO 18W840 T8

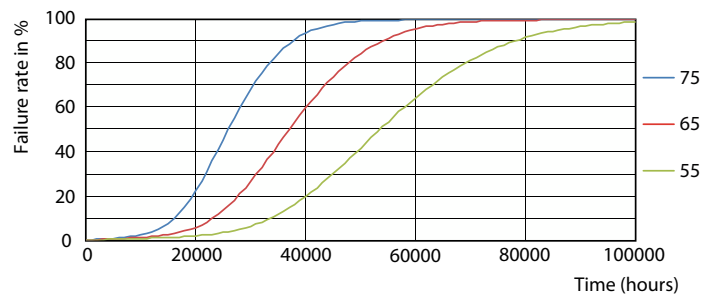


Light Distribution Diagram - CorePro LEDtube UN 1200mm HO 18W840 T8

## Lifetime



Life Expectancy Diagram



FailureRate

# CorePro LED tube Universal T8

## Lifetime



Lumen Maintenance Diagram - CorePro LEDtube UN 1200mm HO 18W840 T8

Lumen Maintenance Diagram - CorePro LEDtube UN 1200mm HO 18W840 T8



LifetimeVsTc

