

# CorePro LED tube Universal T8



## CorePro LEDtube UN 1500mm HO 23W830 T8

The new Philips CorePro LEDtube Universal T8 brings simplicity to your lighting project. You don't need to pay attention to the driver technology anymore. Thanks to a unique design, Philips CorePro LEDtube Universal T8 directly fits in luminaires operating either on Electro Magnetic ballasts or HF Electronic ballasts or mains power connection. So simple to operate and no need to carry double stock of products! Perfectly safe, reliable & easy to install Philips CorePro LEDtube Universal T8 is the ideal alternative to standard fluorescent tubes to save energy and lower investment.

### Product data

General Information	
Cap-Base	G13 [Medium Bi-Pin Fluorescent]
Nominal lifetime	50,000 hour(s)
Switching Cycle	50,000
Lighting Technology	LED
Flux measurement reference	Sphere

Light Technical	
Color Code	830 [CCT of 3000K]
Beam Angle (Nom)	240 degree(s)
Luminous Flux	2,500 lm
Luminous Efficacy (rated) (Nom)	108.00 lm/W
Color Designation	White (WH)
Correlated Color Temperature (Nom)	3000 K
Color Consistency	<6
Color rendering index (CRI)	80
LLMF At End Of Nominal Lifetime (Nom)	70 %

Flickering value (PstLM) - Flickering value as per EN 61000-3-3	1
Stroboscopic effect visibility measure (SVM)	0.9
Photobiological safety according to EN 62471	RG0

Operating and Electrical	
Line Frequency	50 to 60 Hz
Input Frequency	50 to 60 Hz
Power Consumption	23 W
Lamp Current (Nom)	130 mA
Starting Time (Nom)	0.5 s
Warm-up time to 60% light	0.5 s
Power Factor (Fraction)	0.9
Voltage (Nom)	220-240 V
LED alternative to fluorescent lamp power	58 W
Inrush current at mains	9.6
Max. lamp no. on MCB B type 10A - Mains	80

## CorePro LED tube Universal T8

Max. lamp no. on MCB B type 10A – EM ballast without Compensation Capacitor.	80
Max. lamp no. on MCB B type 10A – EM ballast with Compensation Capacitor.	16
Max. lamp no. on MCB B type 16A – Mains	128
Max. lamp no. on MCB B type 16A – EM ballast without Compensation Capacitor.	128
Max. lamp no. on MCB B type 16A – EM ballast with Compensation Capacitor.	25
Ballast Compatibility	Universal

### Temperature

Ambient temperature range	-20 °C to 45 °C
T-Case Maximum (Nom)	60 °C

### Controls and Dimming

Dimmable	No
----------	----

### Mechanical and Housing

Bulb Finish	Frosted
Bulb Material	Glass
Product Length	1,500 mm
Bulb Shape	T8

### Approval and Application

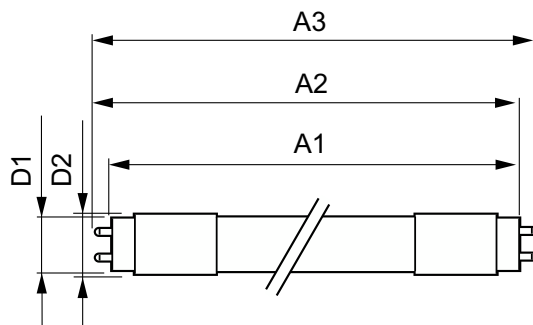
Energy Efficiency Class	F
-------------------------	---

Energy Saving Product	Yes
Approval Marks	RoHS compliance TUV CE marking KEMA Keur certificate
Energy Consumption kWh/1000 h	23 kWh
EPREL Registration Number	1315790
CE mark	Yes
EU RoHS compliant	Yes

### Product Data

Order product name	CorePro LEDtube UN 1500mm HO 23W830 T8
Full product name	CorePro LEDtube UN 1500mm HO 23W830 T8
Full product code	871869680172700
Order code	929001869502
Material Nr. (12NC)	929001869502
Numerator - Quantity Per Pack	1
Net Weight (Piece)	0.270 kg
EAN/UPC - Product/Case	8718696801727
Numerator - Packs per outer box	10
EAN/UPC - Case	8718696801734

## Dimensional drawing

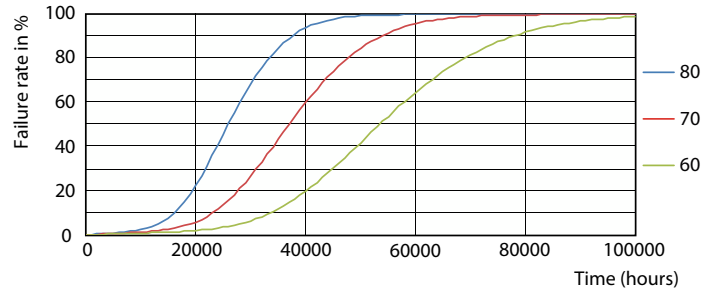
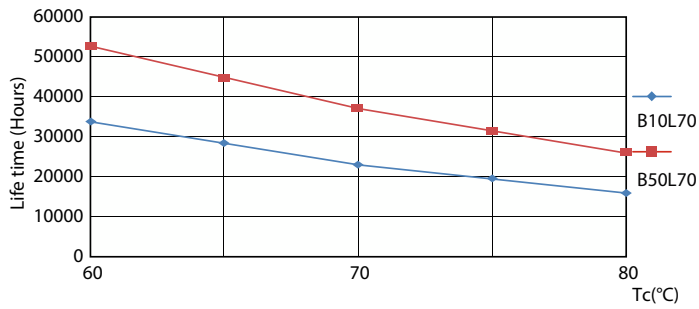


Product	D1	D2	A1	A2	A3
CorePro LEDtube UN 1500mm HO 23W830 T8	27.9 mm	28 mm	1,500 mm	1,505.9 mm	1,514.2 mm



# CorePro LED tube Universal T8

## Lifetime



LifetimeVsTc

FailureRate



Lumen Maintenance Diagram - CorePro LEDtube UN 1500mm HO 23W830 T8

