



CorePro LEDtube EM/ Mains T8



CorePro LEDtube 600mm HO 8W 840 T8

Philips CorePro LEDtubes are the quick and easy way to replace T8 fluorescent or other LED tubes with a fast pack back time. Not only does the Core range of LEDtubes require a low initial investment, but LED energy efficiency also delivers instant savings that you can bank on over a long and reliable lifetime. Plus, with the same lamp size and light distribution as fluorescent alternatives, you'll never know the difference. There are two ways to install these LED tubes: Rewire your existing fluorescent-based luminaires so the CorePro LEDtubes work directly on the Mains. Or simply change the fluorescent starter to an LED starter that can be used with your Electromagnetic ballasts.

Warnings and Safety

- NOTE: The overall energy efficiency and light distribution of any installation that uses these lamps will be determined by the design of the installation.
- Installation must be done according to the installation diagrams provided with the lamp or available online. Installation must be done by a certified professional.

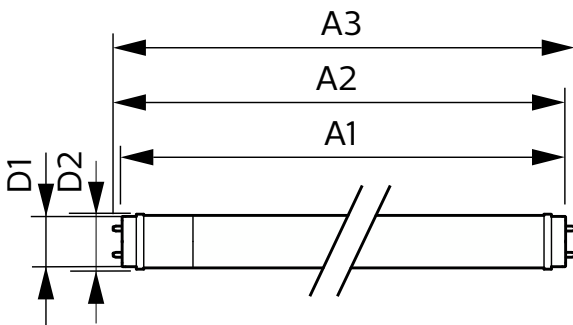
Product data

| General Information | | | |
|----------------------------|----------------|---|-----------------|
| Cap-Base | G13 | Luminous Flux | 900 lm |
| Nominal lifetime | 50,000 hour(s) | Luminous Efficacy (rated) (Nom) | 112 lm/W |
| Switching Cycle | 200,000 | Color Designation | Cool White (CW) |
| Lighting Technology | LED | Correlated Color Temperature (Nom) | 4000 K |
| Flux measurement reference | Sphere | Color Consistency | <6 |
| | | Color rendering index (CRI) | 80 |
| | | LLMF At End Of Nominal Lifetime (Nom) | 70 % |
| | | Flickering value (PstLM) - Flickering value as per EN 61000-3-3 | 1 |
| | | Stroboscopic effect visibility measure (SVM) | 0.4 |

CorePro LEDtube EM/Mains T8

| | |
|--|---------------|
| Photobiological safety according to EN 62471 | RG0 |
| Operating and Electrical | |
| Line Frequency | 50 to 60 Hz |
| Input Frequency | 50 to 60 Hz |
| Power Consumption | 8 W |
| Lamp Current (Max) | 42 mA |
| Lamp Current (Min) | 42 mA |
| Lamp Current (Nom) | 42 mA |
| Starting Time (Nom) | 0.5 s |
| Warm-up time to 60% light | 0.5 s |
| Power Factor (Fraction) | 0.9 |
| Voltage (Nom) | 220-240 V |
| LED alternative to fluorescent lamp power | 18 W |
| Inrush current at mains | 3.02 |
| Max. lamp no. on MCB B type 10A - Mains | 190 |
| Max. lamp no. on MCB B type 10A – EM ballast without Compensation Capacitor. | 190 |
| Max. lamp no. on MCB B type 10A – EM ballast with Compensation Capacitor. | 24 |
| Max. lamp no. on MCB B type 16A - Mains | 300 |
| Max. lamp no. on MCB B type 16A – EM ballast without Compensation Capacitor. | 300 |
| Max. lamp no. on MCB B type 16A – EM ballast with Compensation Capacitor. | 39 |
| Ballast Compatibility | EM/Mains |
| Temperature | |
| Ambient temperature range | -20 to +45 °C |
| T-Case Maximum (Nom) | 50 °C |
| Controls and Dimming | |
| Dimmable | No |

Dimensional drawing



| | |
|---------------------------------|---|
| Mechanical and Housing | |
| Bulb Finish | Frosted |
| Bulb Material | Glass |
| Product Length | 600 mm |
| Bulb Shape | T8 |
| Approval and Application | |
| Energy Efficiency Class | E |
| Energy Saving Product | Yes |
| Approval Marks | RoHS compliance CE marking KEMA Keur certificate |
| Energy Consumption kWh/1000 h | 8 kWh |
| EPREL Registration Number | 1827697 |
| CE mark | Yes |
| EU RoHS compliant | Yes |

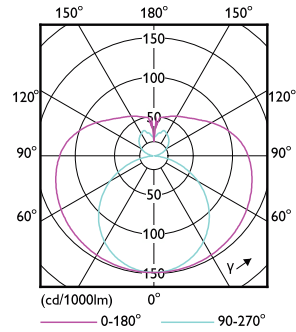
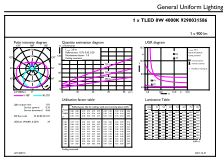
| | |
|-------------------------------------|-----|
| Application Conditions | |
| can it be used in closed luminaires | Yes |

| | |
|---------------------------------|---------------------------------------|
| Product Data | |
| Order product name | CorePro LEDtube 600mm HO 8W 840 T8 |
| Full product name | CorePro LEDtube 600mm HO 8W 840 T8 |
| Full product code | 871951442103500 |
| Order code | 929003158602 |
| Material Nr. (12NC) | 929003158602 |
| Numerator - Quantity Per Pack | 1 |
| Net Weight (Piece) | 0.120 kg |
| EAN/UPC - Product/Case | 8719514421035 |
| Numerator - Packs per outer box | 20 |
| EAN/UPC - Case | 8719514421042 |

| Product | D1 | D2 | A1 | A2 | A3 |
|---------------------------------------|---------|-------|----------|----------|----------|
| CorePro LEDtube 600mm HO 8W 840 T8 | 25.7 mm | 28 mm | 588.5 mm | 595.5 mm | 602.5 mm |

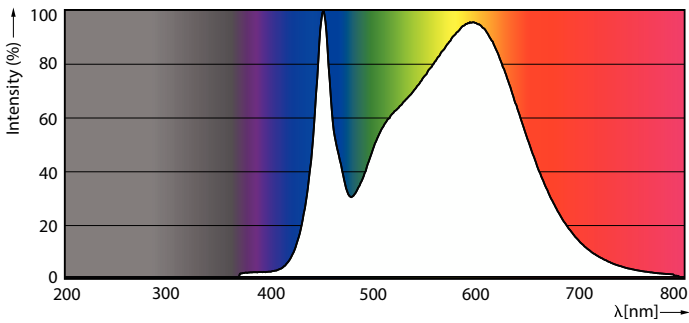
CorePro LEDtube EM/Mains T8

Photometric data



General uniform lighting - CorePro LEDtube 600mm HO 8W 840 T8

Light Distribution Diagram - CorePro LEDtube 600mm HO 8W 840 T8

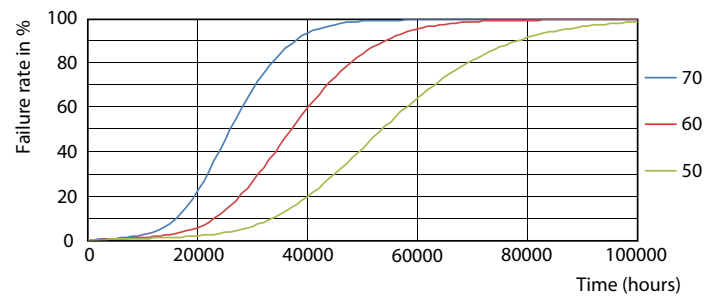


Spectral Power Distribution Colour - CorePro LEDtube 600mm HO 8W 840 T8

Lifetime



Life Expectancy Diagram



FailureRate

CorePro LEDtube EM/Mains T8

Lifetime



LifetimeVsTc

Lumen Maintenance Diagram - CorePro LEDtube 600mm HO 8W 840 T8

