

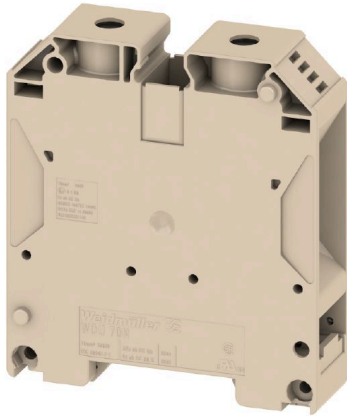
WDU 70N/35**Weidmüller Interface GmbH & Co. KG**

Klingenbergstraße 26

D-32758 Detmold

Germany

www.weidmueller.com

Product image

To feed through power, signal, and data is the classical requirement in electrical engineering and panel building. The insulating material, the connection system and the design of the terminal blocks are the differentiating features. A feed-through terminal block is suitable for joining and/or connecting one or more conductors. They could have one or more connection levels that are on the same potential or insulated against one another.

General ordering data

| | |
|------------|---|
| Version | Feed-through terminal block, Screw connection, dark beige, 70 mm ² , 192 A, 1000 V, Number of connections: 2 |
| Order No. | 9512190000 |
| Type | WDU 70N/35 |
| GTIN (EAN) | 4008190403874 |
| Qty. | 10 items |

Technical data

Approvals

Approvals



| | |
|---------------------------|----------------------------|
| ROHS | Conform |
| UL File Number Search | UL Website |
| Certificate No. (cURus) | E60693 |
| Certificate No. (cURusEX) | E184763 |

Dimensions and weights

| | | | |
|--------------------------|-------------|----------------|-------------|
| Depth | 85 mm | Depth (inches) | 3.3464 inch |
| Depth including DIN rail | 86 mm | Height | 75 mm |
| Height (inches) | 2.9527 inch | Width | 20.5 mm |
| Width (inches) | 0.8071 inch | Net weight | 118.93 g |

Temperatures

| | | | |
|----------------------------------|----------------|----------------------------------|---------------|
| Storage temperature | -25 °C...55 °C | Ambient temperature | -5 °C...40 °C |
| Continuous operating temp., min. | -60 °C | Continuous operating temp., max. | 130 °C |

Environmental Product Compliance

| | | | |
|--------------------------|-----------------------------|-----------------|--|
| RoHS Compliance Status | Compliant without exemption | | |
| REACH SVHC | No SVHC above 0.1 wt% | | |
| Product Carbon Footprint | Cradle to gate | 1.353 kg CO2eq. | |

Material data

| | | | |
|---------------------------|-------|--------|------------|
| Basic material | Wemid | Colour | dark beige |
| UL 94 flammability rating | V-0 | | |

Rating data IECEx/ATEX

| | | | |
|--------------------------------|--------------------|---------------------------------|--------------------|
| Certificate No. (ATEX) | DEMKO14ATEX1338U | Certificate No. (IECEX) | IECEXULD14.0005U |
| Max. voltage (ATEX) | 690 V | Current (ATEX) | 184 A |
| Wire cross section max. (ATEX) | 70 mm ² | Max. voltage (IECEX) | 690 V |
| Current (IECEX) | 184 A | Wire cross section max. (IECEX) | 70 mm ² |
| Marking EN 60079-7 | Ex eb II C Gb | Ex 2014/34/EU label | II 2 G D |

System specifications

| | | | |
|-------------------------------------|---|-------------------------------|-----|
| Version | Screw connection, for screwable cross-connection, in closed state | End cover plate required | No |
| Number of potentials | 1 | Number of levels | 1 |
| Number of clamping points per level | 2 | Number of potentials per tier | 1 |
| Levels cross-connected internally | No | PE connection | No |
| Mounting rail | TS 35 | N-function | No |
| PE function | No | PEN function | Yes |

WDU 70N/35

Weidmüller Interface GmbH & Co. KG
 Klingenbergstraße 26
 D-32758 Detmold
 Germany

www.weidmueller.com

Technical data

2 clampable conductors (H05V/H07V) with equal cross-section (rated connection)

| | | | |
|--|--------------------|--|--------------------|
| Wire connection cross section, finely stranded with wire-end ferrules DIN 46228/1, 2 clampable wires, max. | 25 mm ² | Wire connection cross section, finely stranded with wire-end ferrules DIN 46228/1, 2 clampable wires, min. | 6 mm ² |
| Wire cross-section, finely stranded, two clampable wires, max. | 25 mm ² | Wire connection cross section, finely stranded, two clampable wires, min. | 10 mm ² |
| Cross-section for connected wire, stranded, two clampable wires, max. | 25 mm ² | Cross-section for connected wire, stranded, two clampable wires, min. | 10 mm ² |

Additional technical data

| | | | |
|---------------------|-----------------|-----------------------------|-----|
| Open sides | closed | Number of similar terminals | 1 |
| Installation advice | Direct mounting | Explosion-tested version | Yes |
| Type of mounting | Snap-on | | |

CSA rating data

| | | | |
|-------------------------------|-------|-----------------------|----------------|
| Wire cross section max. (CSA) | 0 AWG | Voltage size C (CSA) | 600 V |
| Current size C (CSA) | 150 A | Certificate No. (CSA) | 200039-1581431 |
| Wire cross section min. (CSA) | 6 AWG | | |

Conductors for clamping (additional connection)

Connection type, additional connection Screw connection

Conductors for clamping (rated connection)

| | | | |
|---|--------------------|---|--------------------|
| Gauge to IEC 60947-1 | B 11 | Wire connection cross section AWG, max. | AWG 0 |
| Connection direction | on side | Tightening torque, max. | 12 Nm |
| Tightening torque, min. | 8 Nm | Stripping length | 22 mm |
| Type of connection | Screw connection | Number of connections | 2 |
| Clamping range, max. | 95 mm ² | Clamping range, min. | 16 mm ² |
| Clamping screw | M 8 | Blade size | S6 (DIN 6911) |
| Wire connection cross section AWG, min. | AWG 6 | Wire connection cross-section, finely stranded with wire-end ferrules DIN 46228/4, max. | 50 mm ² |
| Wire connection cross-section, finely stranded with wire-end ferrules DIN 46228/4, min. | 16 mm ² | Wire connection cross-section, finely stranded with wire-end ferrules DIN 46228/1, max. | 70 mm ² |
| Wire connection cross-section, finely stranded with wire-end ferrules DIN 46228/1, min. | 16 mm ² | Wire connection cross section, finely stranded, max. | 70 mm ² |
| Wire connection cross section, finely stranded, min. | 16 mm ² | Connection cross-section, stranded, max. | 95 mm ² |
| Connection cross-section, stranded, min. | 16 mm ² | Wire connection cross-section, solid core, max. | 16 mm ² |
| Wire connection cross-section, solid core, min. | 16 mm ² | Connection cross-section, finely stranded, min. | 16 mm ² |

General

| | | | |
|---|-------|---------------------|-----------------|
| Wire connection cross section AWG, max. | AWG 0 | Installation advice | Direct mounting |
| Wire connection cross section AWG, min. | AWG 6 | Standards | IEC 60947-7-1 |
| Mounting rail | TS 35 | | |

Technical data

Rating data

| | | | |
|--|--------------------|---------------------------------|---------------|
| Rated cross-section | 70 mm ² | Rated voltage | 1000 V |
| Rated DC voltage | 1000 V | Nominal current | 192 A |
| Current at maximum wires | 232 A | Standards | IEC 60947-7-1 |
| Volume resistance according to IEC 60947-7-x | 0.17 mΩ | Rated impulse withstand voltage | 8 kV |
| Power loss in accordance with IEC 60947-7-x | 6.14 W | Pollution severity | 3 |

UL rating data

| | | | |
|--|-------|--|--------|
| Conductor size Factory wiring max. (cURus) | 0 AWG | Certificate No. (cURus) | E60693 |
| Conductor size Field wiring min. (cURus) | 6 AWG | Conductor size Factory wiring min. (cURus) | 6 AWG |
| Voltage size C (cURus) | 600 V | Current size C (cURus) | 150 A |
| Conductor size Field wiring max. (cURus) | 0 AWG | | |

Classifications

| | | | |
|-------------|-------------|-------------|-------------|
| ETIM 6.0 | EC000897 | ETIM 7.0 | EC000897 |
| ETIM 8.0 | EC000897 | ETIM 9.0 | EC000897 |
| ETIM 10.0 | EC000897 | ECLASS 9.0 | 27-14-11-20 |
| ECLASS 9.1 | 27-14-11-20 | ECLASS 10.0 | 27-14-11-20 |
| ECLASS 11.0 | 27-14-11-20 | ECLASS 12.0 | 27-14-11-20 |
| ECLASS 13.0 | 27-25-01-01 | ECLASS 14.0 | 27-25-01-01 |
| ECLASS 15.0 | 27-25-01-01 | | |

Drawings

