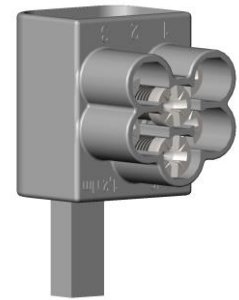




Technical Data Sheet

Date: 2015-10
Page: 1 of 1

Feed-In Terminals AS/3x16 SNS AS/3x16 SNK, AS/2x25 SNK



Application	feed-in terminal for the connection of aluminium or copper conductors eg. to MCBs or RCDs.
Standards	VDE 0220-3: Specifications for single and multiple cable clamps with insulating parts in electrical power cable installations up to 1000 V
Connection	AS/3x16...: three conductors* 16 sqmm stranded or fine stranded 10 sqmm with ferrule AS/2x25...: two conductors* 25 sqmm stranded or fine stranded 16 sqmm with ferrule *solid/stranded copper conductors or solid aluminium conductors
Ratings	63 A / 690 V
Materials	base: brass, tin plated screws: steel, zink plated housing: PC/ABS, flame retardant, halogene free
Mounting	direct mounting between conductors and terminals designed for copper wire only. SNK-types with additional snap-on features for easy assembly.
Tightening Torque	AS/3x16: 1.2 Nm (M4) AS/2x25: 2 Nm (M6)
Safety	edges rounded
Environment Protection	all materials and manufacturing processes comply with RoHS regulations.

AS/3x16 SNS

AS/3x16 SNK

AS/2x25 SNK

