

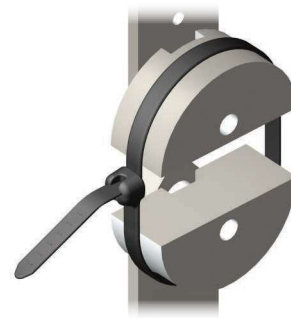
Features and Benefits – Dome-Top® Barb Ty Cable Ties

Two-piece design incorporates a stainless steel locking barb in a nylon cable tie.

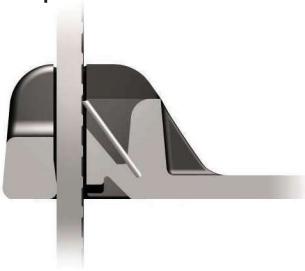
Dome-top head features unique patented design with round, smooth edges



Stainless steel locking barb provides infinite adjustability through entire bundle range

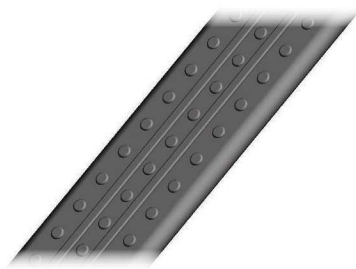


Patented low thread force design reduces operator fatigue and improves productivity



High loop tensile strength exceeds industry standards

Ribbed and stippled strap body prevents lateral movement on the bundle



Curved tip threads easily and installs faster

Finger grip ensures positive grip during threading of tie



Cable tie tools speed installation and reduce total installed cost.

Visit www.panduit.com/tools.



Cable tie accessories are used to speed and simplify the mounting of wires, cables, and tubing.

See pages B2.1 – B2.26.

A

PANDUIT®

Industrial Electrical Solutions

B1

Selection Guide – Dome-Top® Barb Ty and Dura-Ty™ Cable Ties

B2

B3

C1

C2

Material, Color (Suffix)	Style/Function	Part Number Prefix	Catalog Page
--------------------------	----------------	--------------------	--------------

C3

Nylon 6.6, Natural (No Suffix)

Locking Ties/Bundle	BT	B1.43
Clamp Ties/Mount	BC	B1.46
Push Mount Ties/Mount	BW	B1.48
Marker Ties/Identify	BF, BM, B2M, B3M, B4M	B1.50

C4

Weather Resistant Nylon 6.6, Black (0)

Locking Ties/Bundle	BT	B1.44
Clamp Ties/Mount	BC	B1.47
Push Mount Ties/Mount	BW, BP	B1.48, 49
Marker Ties/Identify	BF, BM, B2M, B3M, B4M	B1.50

D1

Dome-Top®
Barb Ty
Cable Ties

Heat Stabilized Nylon 6.6, Black (30)

Locking Ties/Bundle	BT	B1.45
Clamp Ties/Mount	BC	B1.47

D2

Heat Stabilized Nylon 6.6, Natural (39)

Locking Ties/Bundle	BT	B1.45
---------------------	----	-------

D3

Dura-Ty™
Cable Ties,
Strapping,
and Kits

Weather Resistant Acetal, Black

Locking Ties/Bundle	DT	B1.51
---------------------	----	-------

E1

Part Number System for Dome-Top® Barb Ty and Dura-Ty™ Cable Ties

E2

BT

Type

2

Size

S

Cross Section

—

Screw Hole Size

C

Package Size

—

Material/Color

E3

BT = Locking Tie
 BC = Clamp Tie
 BF = Flag Tie
 BM = Marker Tie
 BP = Push Mount Tie
 BW = Wing Push Mount Tie
 DT = Locking Tie

Approx.
 Maximum
 Bundle
 Dia. (In.)

M = Miniature
 I = Intermediate
 S = Standard
 LH = Light-Heavy
 H = Heavy
 EH = Extra-Heavy

(Clamp Ties Only)
 -S4 = #4 (M2.5)
 -S6 = #6 (M3)
 -S8 = #8 (M4)
 -S10 = #10 (M5)
 -S25 = 1/4 (M6)

Q = 25
 L = 50
 C = 100
 TL = 250
 D = 500
 M = 1000
 LR = 50' Reel

See Page B1.52

E4

E5

F

G

H

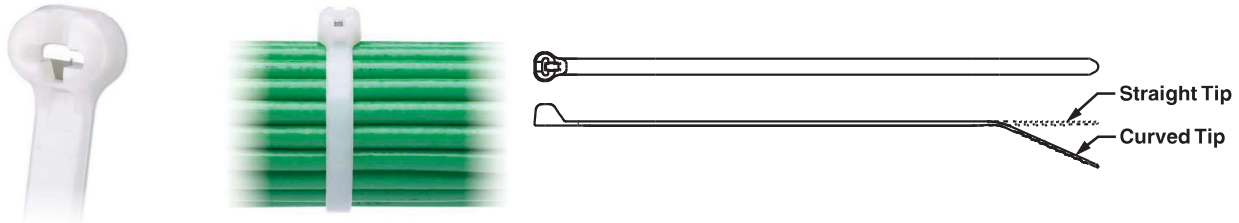
B1.42



Dome-Top® Barb Ty Cable Ties – Nylon 6.6

- For indoor use
- Dome-top head features unique patented design with round, smooth edges
- Stainless steel locking barb provides consistent performance, reliability, and infinite adjustability through entire bundle range
- High strength and low thread force

- A variety of materials and colors are available for specific applications
- Curved tip is easy to pick up from flat surfaces and allows faster initial threading to speed installation
- UL Listed for use in plenum or air handling spaces per NEC



Part Number	Length		Width		Thickness		Max. Bundle Dia.		Min. Loop Tensile Str.		Recommended Installation Tool	Std. Pkg. Qty.	Std. Ctn. Qty.
	In.	mm	In.	mm	In.	mm	In.	mm	Lbs.	N			

Miniature Cross Section – Plenum Rated

BT1M-C	4.0	102	0.095	2.4	0.036	.9	.90	23	18	80	GTS-E, GS2B-E, PTS, PPTS, STS2	100	1000
BT1.5M-C	6.3	160	0.095	2.4	0.046	1.2	1.50	38					
BT2M-C	7.9	201	0.095	2.4	0.046	1.2	2.00	51					
BT4M-C	14.2	361	0.095	2.4	0.046	1.2	4.00	102					

Intermediate Cross Section – Plenum Rated

BT1.5I-C	6.1	155	0.141	3.6	0.041	1.0	1.50	38	40	178	GTS-E, GS2B-E, PTS, PPTS, STS2	100	1000
BT2I-C	8.0	203	0.141	3.6	0.041	1.0	2.00	51					
BT3I-C	11.3	287	0.141	3.6	0.049	1.2	3.00	76					
BT4I-C	14.3	363	0.141	3.6	0.049	1.2	4.00	102					

Standard Cross Section – Plenum Rated ^{NEW!} UL TYPE 2S Rated

BT2S-C	8.0	203	0.185	4.7	0.045	1.2	2.00	51	50	222	GTS-E, GS2B-E, GTH-E, GS4H-E, PTS, PTH, PPTS, STS2, STH2	100	1000
BT3S-C	12.0	305	0.185	4.7	0.052	1.3	3.00	76					
BT4S-C	15.1	384	0.185	4.7	0.052	1.3	4.00	102					

Light-Heavy Cross Section (Straight Tip) – Plenum Rated ^{NEW!} UL TYPE 2S Rated

BT2LH-L	8.7	221	0.275	7.0	0.065	1.7	2.00	51	120	534	GTH-E, GS4H-E, GS4EH-E, PTH, STH2, ST3EH	50	500
BT3LH-L	11.8	300	0.275	7.0	0.065	1.7	3.00	76					
BT4LH-L	14.9	378	0.275	7.0	0.065	1.7	4.00	102					
BT5LH-L	18.1	460	0.275	7.0	0.065	1.7	5.00	127					
BT6LH-L	21.2	538	0.275	7.0	0.065	1.7	6.00	152					
BT7LH-L	24.4	620	0.275	7.0	0.065	1.7	7.00	178					
BT8LH-L	27.5	699	0.275	7.0	0.065	1.7	8.00	203					
BT9LH-L	30.7	780	0.275	7.0	0.065	1.7	9.00	229					

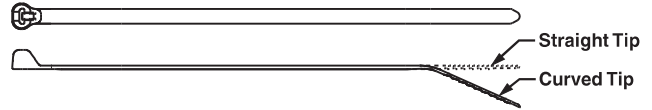


Dome-Top® Barb Ty Cable Ties – Weather Resistant Nylon 6.6

- Greater resistance to damage caused by ultraviolet light – indoor or outdoor use
- Dome-top head features unique patented design with round, smooth edges

- Stainless steel locking barb provides consistent performance, reliability, and infinite adjustability through entire bundle range

- High strength and low thread force
- Curved tip is easy to pick up from flat surfaces and allows faster initial threading to speed installation
- UL Listed for use in plenum or air handling spaces per NEC



Part Number	Length		Width		Thickness		Max. Bundle Dia.		Min. Loop Tensile Str.		Recommended Installation Tool	Std. Pkg. Qty.	Std. Ctn. Qty.
	In.	mm	In.	mm	In.	mm	In.	mm	Lbs.	N			

Miniature Cross Section ★ NEW! Plenum Rated

BT1M-C0	4.0	102	0.095	2.4	0.036	.9	.90	23	18	80	GTS-E, GS2B-E, PTS, PPTS, STS2	100	1000
BT1.5M-C0	6.3	160	0.095	2.4	0.046	1.2	1.50	38					
BT2M-C0	7.9	201	0.095	2.4	0.046	1.2	2.00	51					
BT4M-C0	14.2	361	0.095	2.4	0.046	1.2	4.00	102					

Intermediate Cross Section ★ NEW! Plenum Rated

BT1.5I-C0	6.1	155	0.141	3.6	0.041	1.0	1.50	38	40	178	GTS-E, GS2B-E, PTS, PPTS, STS2	100	1000
BT2I-C0	8.0	203	0.141	3.6	0.041	1.0	2.00	51					
BT3I-C0	11.3	287	0.141	3.6	0.049	1.2	3.00	76					
BT4I-C0	14.3	363	0.141	3.6	0.049	1.2	4.00	102					

Standard Cross Section ★ NEW! Plenum Rated UL TYPE 2S Rated

BT2S-C0	8.0	203	0.185	4.7	0.045	1.2	2.00	51	50	222	GTS-E, GS2B-E, GTH-E, GS4H-E, PTS, PTH, PPTS, STS2, STH2	100	1000
BT3S-C0	12.0	305	0.185	4.7	0.052	1.3	3.00	76					
BT4S-C0	15.1	384	0.185	4.7	0.052	1.3	4.00	102					

Light-Heavy Cross Section (Straight Tip) ★ NEW! Plenum Rated UL TYPE 2S Rated

BT2LH-L0	8.7	221	0.275	7.0	0.065	1.7	2.00	51	120	534	GTH-E, GS4H-E, GS4EH-E, PTH, STH2, ST3EH	50	500
BT3LH-L0	11.8	300	0.275	7.0	0.065	1.7	3.00	76					
BT4LH-L0	14.9	378	0.275	7.0	0.065	1.7	4.00	102					
BT5LH-L0	18.1	460	0.275	7.0	0.065	1.7	5.00	127					
BT6LH-L0	21.2	538	0.275	7.0	0.065	1.7	6.00	152					
BT7LH-L0	24.4	620	0.275	7.0	0.065	1.7	7.00	178					
BT8LH-L0	27.5	699	0.275	7.0	0.065	1.7	8.00	203					
BT9LH-L0	30.7	780	0.275	7.0	0.065	1.7	9.00	229					



Dome-Top® Barb Ty Cable Ties – Heat Stabilized Nylon 6.6

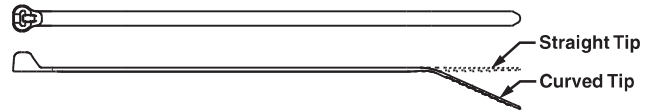
- For high temperature applications up to 239°F (115°C) – indoor use
- Dome-top head features unique patented design with round, smooth edges

- Stainless steel locking barb provides consistent performance, reliability, and infinite adjustability through entire bundle range
- Curved tip is easy to pick up from flat surfaces and allows faster initial threading to speed installation



BT2S-M30

BT2S-M39



Part Number	Length		Width		Thickness		Max. Bundle Dia.		Min. Loop Tensile Str.		Recommended Installation Tool	Std. Pkg. Qty.	Std. Ctn. Qty.
	In.	mm	In.	mm	In.	mm	In.	mm	Lbs.	N			

Heat Stabilized Nylon 6.6

Miniature Cross Section

BT1M-C30	4.0	102	0.095	2.4	0.036	0.9	0.90	23	18	80	GTS-E, GS2B-E, PTS, PPTS, STS2	100	1000
BT1.5M-M30	6.3	160	0.095	2.4	0.046	1.2	1.50	38	18	80		1000	50000
BT2M-M30	7.9	201	0.095	2.4	0.046	1.2	2.00	51	18	80		1000	25000

Intermediate Cross Section

BT1.5I-M30	6.1	155	0.141	3.6	0.041	1.0	1.50	38	40	178	GTS-E, GS2B-E, PTS, PPTS, STS2	1000	25000
BT2I-M30	8.0	203	0.141	3.6	0.041	1.0	2.00	51					
BT3I-M30	11.3	287	0.141	3.6	0.049	1.2	3.00	76	40	178		1000	10000

Standard Cross Section

BT2S-M30	8.0	203	0.185	4.7	0.045	1.2	2.00	51	50	222	GTS-E, GS2B-E, GTH-E, GS4H-E, PTS, PTH, PPTS, STS2, STH2	1000	10000
BT3S-M30	12.0	305	0.185	4.7	0.052	1.3	3.00	76					
BT4S-M30	15.1	384	0.185	4.7	0.052	1.3	4.00	102	50	222		1000	5000

Light-Heavy Cross Section (Straight Tip)

BT4LH-TL30	14.9	378	0.275	7.0	0.065	1.7	4.00	102	120	534	GTH-E, GS4H-E, GS4EH-E, PTH, STH2, ST3EH	250	2500
------------	------	-----	-------	-----	-------	-----	------	-----	-----	-----	--	-----	------

Heat Stabilized Nylon 6.6

Miniature Cross Section

BT1M-M39	4.0	102	0.095	2.4	0.036	0.9	0.90	23	18	80	GTS-E, GS2B-E, PTS, PPTS, STS2	1000	50000
----------	-----	-----	-------	-----	-------	-----	------	----	----	----	--------------------------------	------	-------

Intermediate Cross Section

BT1.5I-M39	6.1	155	0.141	3.6	0.041	1.0	1.50	38	40	178	GTS-E, GS2B-E, PTS, PPTS, STS2	1000	25000
------------	-----	-----	-------	-----	-------	-----	------	----	----	-----	--------------------------------	------	-------

Standard Cross Section

BT2S-M39	8.0	203	0.185	4.7	0.045	1.2	2.00	51	50	222	GTS-E, GS2B-E, GTH-E, GS4H-E, PTS, PTH, PPTS, STS2, STH2	1000	10000
BT3S-M39	12.0	305	0.185	4.7	0.052	1.3	3.00	76					
BT4S-M39	15.1	384	0.185	4.7	0.052	1.3	4.00	102	50	222		1000	5000

Light-Heavy Cross Section (Straight Tip)

BT4LH-TL39	14.9	378	0.275	7.0	0.065	1.7	4.00	102	120	534	GTH-E, GS4H-E, GS4EH-E, PTH, STH2, ST3EH	250	2500
------------	------	-----	-------	-----	-------	-----	------	-----	-----	-----	--	-----	------

B1
B2
B3
C1
C2
C3
C4
D1
D2
D3
E1
E2
E3
E4
E5
F
G
H