

Description

Beoview 7 video monitor, is a Beoview range full IP solution from Golmar, for the communication in luxury homes, residential buildings, condominiums or office buildings.

Thanks to its technology and Peer2Peer facilities Beoview 7 monitors do not require any server on the installation. The protocol of communication is TCP/IP which makes possible to be connected to a LAN together with other IP devices in the same installation.

The system never becomes busy thanks to the multi-channel feature. The touch capacitive screen displaying big icons makes it user-friendly, specially for elderly or disabled people.

Materials such as the glass screen and the metal aluminium frames combined with the high fidelity full duplex audio communication and the real time video streaming make this product exclusive.



Dimensions: 227(W) 140 (H) 17 (D) mm

Features

- Missed calls image memory.
- Intercommunication between apartments.
- Call transfer to concierge / monitor.
- Selective call to concierge stations.
- Self-activation of door entry panels.
- Reception of text messages from PC-soft.
- Communication and ring tone volume adjustments.
- Glass capacitive touch screen, 7 inches size.
- Door Bell input tone. Dry contact integrated.
- Output for call signal repeat.
- Connector RJ-45 fast and secure installation.
- Standard Ethernet LAN, PoE 802.3AF.

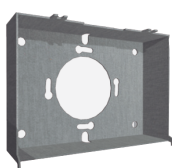
Technical details

Resolution: 800 x 600 px.
 Power consumption: iddle 2W fully ac.
 Working temperature: -20° to 70°
 Humidity: 10% - 90% non condensing.
 Voltage: 48Vdc. PoE 802.3AF.
 Construction: Anodized aluminium and glass.
 Touch screen: Full capacitive.

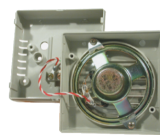
Options



SOB-M
Desktop adaptor

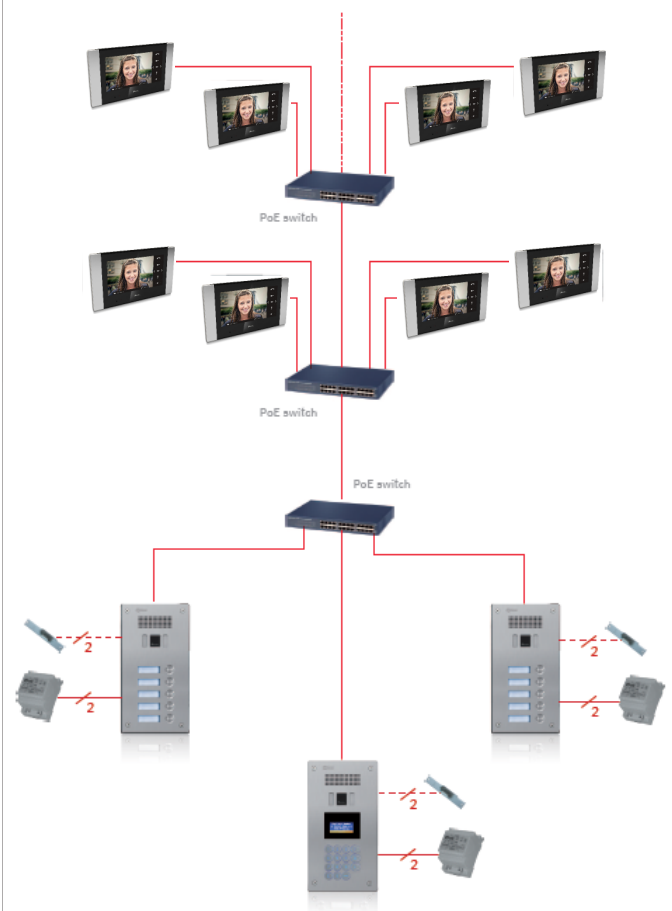


SUP-700
Surface box



S-8
Call repeater

Diagram



For further information download the instructions manual.

Due to continuous product improvement, all colors, sizes, materials, finishes and specifications are subject to change without notice.

