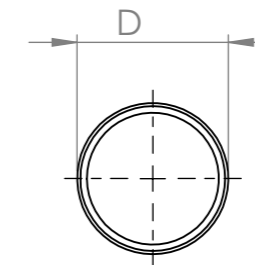
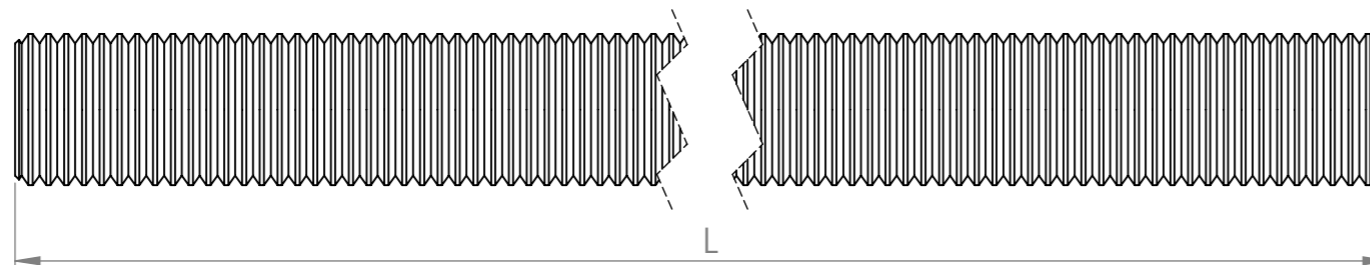
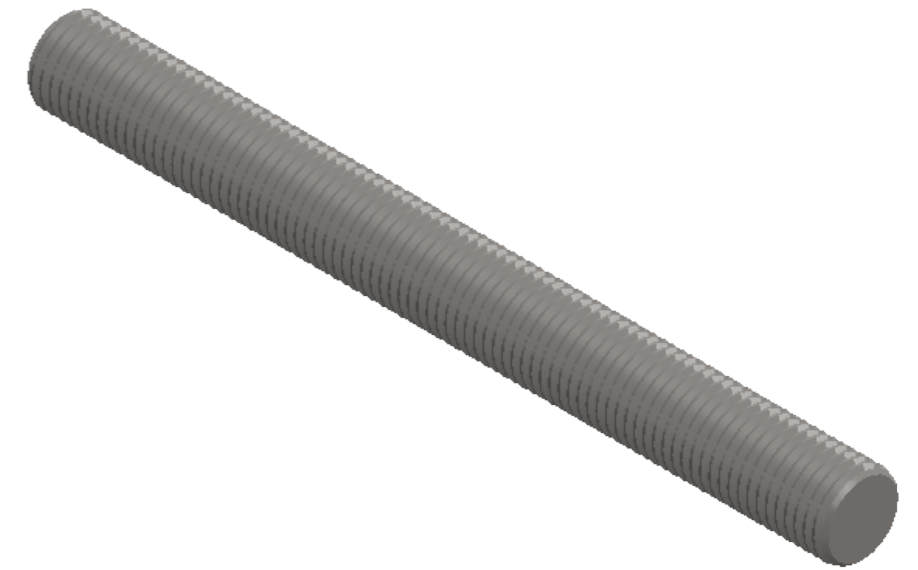


Description	Diameter = D	Length = L	Article code customer	Article code Bodegraven	Weight per bundle	Weight per pallet	Pcs per pallet
M6x1000	6	1000		DM4V0061	17,0 kg	1.020 kg	6.000
M6x2000	6	2000		DM4V0062	17,0 kg	1.020 kg	3.000
M6x3000	6	3000		DM4V0063	25,5 kg	1.020 kg	2.000



NOTE: ONLY 60 degree top angle according to DIN976-1

Customer:

UNLESS OTHERWISE SPECIFIED: DIMENSIONS ARE IN MILLIMETERS SURFACE FINISH: A2K TOLERANCES: DIN976-1			FINISH: Zinc plated			DEBUR AND BREAK SHARP EDGES		DO NOT SCALE DRAWING		REVISION A	
NAME		SIGNATURE	DATE	Weight	Length	Pcs bundle	TITLE: THREADED ROD DIN976-1 M6				
DRAWN		MW	04-2015	0,17kg	1000mm	100					
CHK'D		IL	04-2015	0,34kg	2000mm	50					
Q.A		JK	04-2015	0,51kg	3000mm	50					
Description		NORM		MATERIAL:			DWG NO.		A4		
Dimensions		DIN976-1		Class 4.8 st.37			DM4V0061-2-3				
Strength		ISO898/1		Made in Belgium			SCALE: Undefined		SHEET 1 OF 1		
Plating		EN ISO 4042									
Thread tolerance		ISO 965 -1/2									