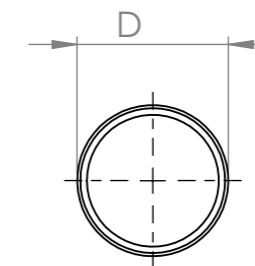
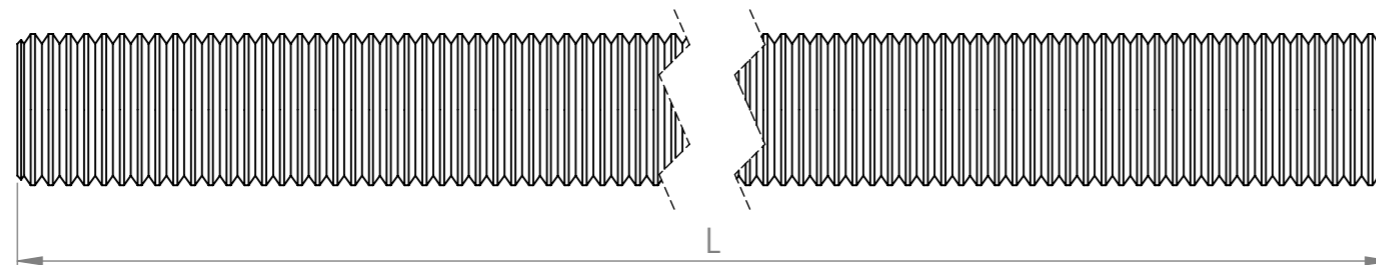
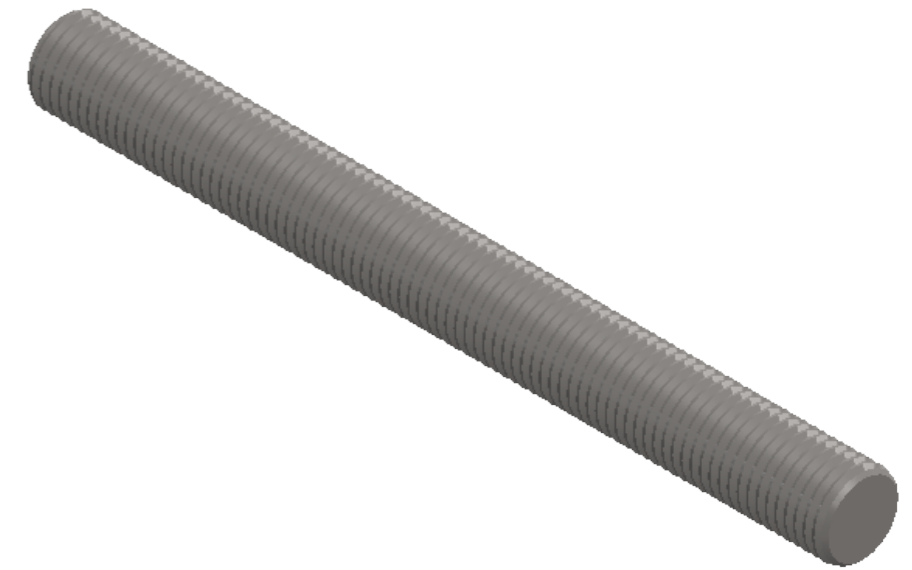


Description	Diameter = D	Length = L	Article code customer	Article code Bodegraven	Weight per bundle	Weight per pallet	Pcs per pallet
M10 x1000	10	1000		DM4V0101	12,25 kg	980 kg	2.000
M10x2000	10	2000		DM4V0102	19,60 kg	980 kg	1.000
M10x3000	10	3000		DM4V0103	29,40 kg	1.029 kg	700



NOTE: ONLY 60 degree top angle according to DIN976-1

Customer:

UNLESS OTHERWISE SPECIFIED: DIMENSIONS ARE IN MILLIMETERS SURFACE FINISH: A2K TOLERANCES: DIN976-1			FINISH: Zinc plated			DEBUR AND BREAK SHARP EDGES		DO NOT SCALE DRAWING		REVISION A	
NAME		SIGNATURE	DATE	Weight	Lenght	Pcs bundle		TITLE:			
DRAWN MW			04-2015	0,49kg	1000mm	25		THREADED ROD DIN976-1 M10			
CHK'D IL			04-2015	0,98kg	2000mm	20					
Q.A JK			04-2015	1,47kg	3000mm	20					
Description		NORM		MATERIAL:		Class 4.8 St.37		DWG NO.		A4	
Dimensions		DIN976-1		EN ISO 4042		Made in Belgium		DM4V0101-2-3		SCALE: Undefined	
Strenght		ISO898/1		Thread tolerance		ISO 965 -1/2		SHEET 1 OF 1			