

Produktdatablad

Specifikationer



Harmony trykknaphoved i plast for LED med fjeder-retur og isætning af label under den hvide trykflade

El-nr.:
7517902762

ZB5AA18

Vigtig meddelelse: A change in appearance may be noted on the product but does not affect its use in terms of function and safety. This makes it compatible with our Universal LED blocks
EAN-nr: 3389110904420

Egenskaber

| | |
|---------------------------------|---------------------------------------|
| Produktserie | Harmony XB5 |
| Produkttype | Hoved til lampetryk |
| Enhedsforkortelse | ZB5 |
| Produktet passer med | Universal LED |
| Materiale og farve på frontring | Mørkegrå plast |
| Montagediameter | 22 mm |
| Mindst mulige salgsantal | 1 |
| Hovedtype | Standard |
| Form på hoved | Rundt |
| Betjeningsprofil | fjeder-retur |
| Betjeningsprofil | Hvid Plan, Uden mærkning |
| Yderligere egenskaber | For isætning af label under trykflade |

Produktinformationer

| | |
|---------------------------------------------|------------------------------------------------------|
| Bredde | 29 mm |
| Højde | 29 mm |
| Dybde | 30 mm |
| Vægt | 0,018 kg |
| Modstandsdygtighed overfor højtryksrensning | 7000000 Pa ved 55 °C, distance : 0.1 m |
| Mekanisk holdbarhed | 10000000 kredsløb |
| Kanalnavn | XALD 1...5 montagehuller XALK 2...5 montagehuller |
| Farve på trykflade eller linse | Hvid |
| Mærkning | Uden mærkning |

Ansvarsfraskrivelse: Denne dokumentation er ikke tænkt som en erstatning for og kan ikke anvendes til at afgøre egnetheden eller pålideligheden for disse produkter til bestemte anvendelsesformål.

| | |
|-----------------------------------------|-------------------------------------------------------------------------------------------------------------------------------------------------------------------------------------------------------------------------------------------------------------------------------------------------------------------------------------------------------------------------------------------------------------------------------------------------------------------------------------------------------------------------------------------------------------------------------------------------------------------------------------------------------------------------------------------------------------------------------------------------------------------------------------------------------------------------------------------------------------------------------------------------------|
| Kode for elektrisk sammensætning | M1 til <6 kontakter benytter enkelt blokke i Montering forfra med integreret LED M2 til <6 kontakter benytter enkelt og dobbelt blokke i Montering forfra med integreret LED M6 til <2 kontakter benytter enkelt blokke i Montering forfra med integreret LED og transformere M10 til <2 kontakter benytter enkelt blokke i Montering forfra med integreret LED MF1 til <2 kontakter benytter enkelt blokke i Montering forfra med integreret LED MR1 til <2 kontakter benytter enkelt blokke i Montering bagfra med integreret LED C3 til <6 kontakter benytter enkelt blokke i Montering forfra C4 til <6 kontakter benytter enkelt og dobbelt blokke i Montering forfra C14 til <2 kontakter benytter enkelt blokke i Montering forfra SF2 til <2 kontakter benytter enkelt blokke i Montering forfra SR2 til <2 kontakter benytter enkelt blokke i Montering bagfra |
|-----------------------------------------|-------------------------------------------------------------------------------------------------------------------------------------------------------------------------------------------------------------------------------------------------------------------------------------------------------------------------------------------------------------------------------------------------------------------------------------------------------------------------------------------------------------------------------------------------------------------------------------------------------------------------------------------------------------------------------------------------------------------------------------------------------------------------------------------------------------------------------------------------------------------------------------------------------|

| | |
|---------------------|-------------|
| Konstruktion | Som løsdele |
|---------------------|-------------|

Miljø

| | |
|--------------------------------------------|--------------------------------------------------------------------------------------------------------------------------------------------------------------------------------------------------|
| Beskyttelsesbehandling | TC |
| Omgivelsestemperatur ved opbevaring | -40...70 °C |
| Omgivelsestemperatur under drift | -40...70 °C |
| Overspændingskategori | Klasse II conforming to IEC 60536 |
| IP kapslingsklasse | IP66 i henhold til IEC 60529 IP67 IP69 IP69K |
| NEMA kapslingsklasse | NEMA 13 NEMA 4X |
| IP kapslingsklasse | IK03 conforming to IEC 62262 |
| Standarder | UL 508 IEC 60947-5-1 GB 14048.5 IEC 60947-1 IEC 60947-5-4 CSA C22.2 No 14 JIS C8201-5-1 JIS C8201-1 |
| Produktcertificeringer | BV CSA DNV LROS (Lloyds register of shipping) UL listet |
| Vibrationsmodstand | 5 gn (f= 2...500 Hz) conforming to IEC 60068-2-6 |
| Modstandsdygtighed overfor stød | 30 gn (varighed = 18 milisekund) til Halv sinusbølge acceleration i henhold til IEC 60068-2-27 50 gn (varighed = 11 milisekund) til Halv sinusbølge acceleration i henhold til IEC 60068-2-27 |

Forpakkingsinformation

| | |
|--------------------------------|----------|
| Enhedstype af pakke 1 | PCE |
| Antal enheder i pakke 1 | 1 |
| Pakke 1 Højde | 8,800 cm |
| Pakke 1 Længde | 3,400 cm |
| Package 1 Length | 5,400 cm |
| Pakke 1 Vægt | 19,000 g |
| Enhedstype af pakke 2 | BB1 |
| Antal enheder i pakke 2 | 5 |
| Pakke 2 Højde | 8,800 cm |

| | |
|--------------------------------|-----------|
| Pakke 2 Bredde | 3,400 cm |
| Pakke 2 Længde | 26,500 cm |
| Pakke 2 Vægt | 99,000 g |
| Enhedstype af pakke 3 | S03 |
| Antal enheder i pakke 3 | 150 |
| Pakke 3 Højde | 30,000 cm |
| Pakke 3 Bredde | 30,000 cm |
| Pakke 3 Længde | 40,000 cm |
| Pakke 3 Vægt | 3,594 kg |

Logistik informationer

| | |
|-----------------|----|
| Oprindelsesland | FR |
|-----------------|----|

Garanti

| | |
|---------|-----------|
| Garanti | 18 months |
|---------|-----------|

Environmental Data

Schneider Electric's mål er at opnå Net Zero-status i 2050 gennem partnerskaber med forsyningskæden, materialer med lavere påvirkning og cirkularitet via vores igangværende kampagne "Use Better, Use Longer, Use Again" for at forlænge produkternes levetid og genbrugelighed.

[Forklaring af Environmental Data >](#)

[Sådan vurderer vi produktets bæredygtighed >](#)

Miljøfodaftryk

CO2-belastning (kg CO2 eq.) 1

Miljøoplysning [Miljøprofil for produkt](#)

Use Better

Materialer og emballage

Pakke med genbrugspap Yes

Emballage uden plast No

[EU RoHS-direktivet](#) Proaktiv overensstemmelse (produkt ikke omfattet af EU RoHS)

Reach-forordning [REACH-erklæring](#)

Use Again

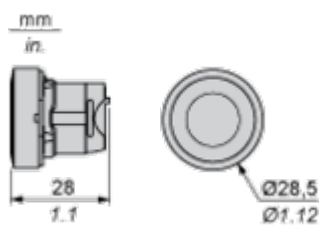
Ompakning og genfremstilling

Cirkularitetsprofil [Oplysninger om udtjent udstyr](#)

Returnering No

Dimensions Drawings

Dimensions



Mounting and Clearance

Panel Cut-out for Pushbuttons, Switches and Pilot Lights (Finished Holes, Ready for Installation)

Connection by Screw Clamp Terminals or Plug-in Connectors or on Printed Circuit Board



- (1) Diameter on finished panel or support
- (2) For selector switches and Emergency stop buttons, use of an anti-rotation plate type ZB5AZ902 is recommended.
- (3) $\varnothing 22.5$ mm recommended ($\varnothing 22.3_0^{+0.4}$) / $\varnothing 0.89$ in. recommended ($\varnothing 0.88_0^{+0.016}$)

| Connections | a in mm | a in in. | b in mm | b in in. |
|-----------------------------------------------|---------|----------|---------|----------|
| By screw clamp terminals or plug-in connector | 40 | 1.57 | 30 | 1.18 |
| By Faston connectors | 45 | 1.77 | 32 | 1.26 |
| On printed circuit board | 30 | 1.18 | 30 | 1.18 |

Detail of Lug Recess



- (1) Diameter on finished panel or support
- (2) For selector switches and Emergency stop buttons, use of an anti-rotation plate type ZB5AZ902 is recommended.
- (3) $\varnothing 22.5$ mm recommended ($\varnothing 22.3_0^{+0.4}$) / $\varnothing 0.89$ in. recommended ($\varnothing 0.88_0^{+0.016}$)



A: 1.18 in. min.
 B: 1.57 in. min.

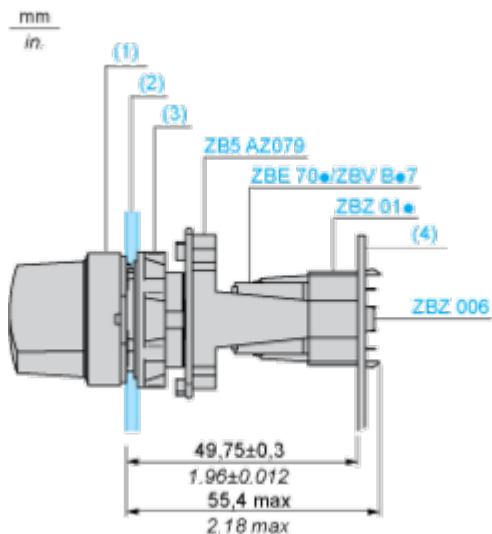
General Tolerances of the Panel and Printed Circuit Board

The cumulative tolerance must not exceed 0.3 mm / 0.012 in.: T1 + T2 = 0.3 mm max.

Installation Precautions

- Minimum thickness of circuit board: 1.6 mm / 0.06 in.
- Cut-out diameter: 22.4 mm ± 0.1 / 0.88 in. ± 0.004
- Orientation of body/fixing collar ZB5AZ009: ± 2° 30' (excluding cut-outs marked a and b).
- Tightening torque of screws ZBZ006: 0.6 N.m (5.3 lbf.in) max.
- Allow for one ZB5AZ079 fixing collar/pillar and its fixing screws:
 - every 90 mm / 3.54 in. horizontally (X), and 120 mm / 4.72 in. vertically (Y).
 - with each selector switch head (ZB5AD*, ZB5AJ*, ZB5AG*).

The fixing centers marked a and b are diagonally opposed and must align with those marked 4 and 5.



- (1) Head ZB5AD•
- (2) Panel
- (2) Nut
- (4) Printed circuit board

Mounting of Adapter (Socket) ZBZ01•

- 1 2 elongated holes for ZBZ006 screw access
- 2 1 hole \varnothing 2.4 mm \pm 0.05 / 0.09 in. \pm 0.002 for centring adapter ZBZ01•
- 3 8 \times \varnothing 1.2 mm / 0.05 in. holes
- 4 1 hole \varnothing 2.9 mm \pm 0.05 / 0.11 in. \pm 0.002, for aligning the printed circuit board (with cut-out marked **a**)
- 5 1 elongated hole for aligning the printed circuit board (with cut-out marked **b**)
- 6 4 holes \varnothing 2.4 mm / 0.09 in. for clipping in adapter ZBZ01•

Dimensions An + 18.1 relate to the \varnothing 2.4 mm \pm 0.05 / 0.09 in. \pm 0.002 holes for centring adapter ZBZ01•.

Technical Description

Electrical Composition Corresponding to Code C3



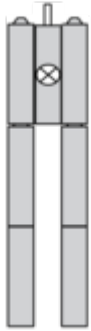
Electrical Composition Corresponding to Code C4



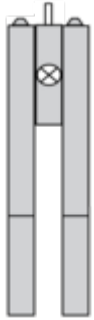
Electrical Composition Corresponding to Codes C14, SF2 and SR2



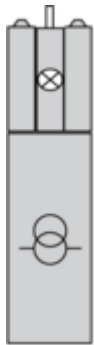
Electrical Composition Corresponding to Codes M1 and M7



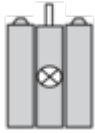
Electrical Composition Corresponding to Codes M2 and M8



Electrical Composition Corresponding to Codes M6 and P2



Electrical Composition Corresponding to Codes M5, M10, MF1, MR1 and MF2



Legend

Single contact



Double contact



Light block

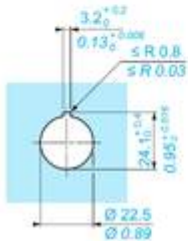
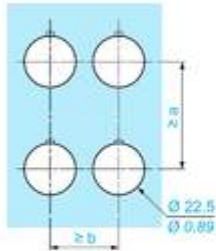
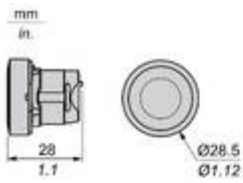


Possible location



Technical Illustration

Dimensions



| | | a (mm) | a (in.) | b (mm) | b (in.) |
|-----------|-----------|--------|---------|--------|---------|
| | | 40 | 1.57 | 30 | 1.18 |
| ZBE..... | ZBV..... | | | | |
| | | 45 | 1.77 | 32 | 1.26 |
| ZBE.....3 | ZBV.....3 | | | | |
| | | 40 | 1.57 | 30 | 1.18 |
| ZBE.....4 | ZBV.....4 | | | | |
| | | 50 | 1.97 | 30 | 1.18 |
| ZBE.....5 | ZBV.....5 | | | | |
| | | 40 | 1.57 | 30 | 1.18 |
| ZBE.....9 | ZBV.....9 | | | | |
| | | 40 | 1.57 | 30 | 1.18 |
| ZBRT.. | ZBRV1 | | | | |

Offer Marketing Illustration

Product benefits / Features

Features Harmony XB5



- 

Quick and easy assembly and disassembly
- 

Excellent mechanical connection with operator head
- 

Various types of connection: screw clamp, connector, Faston connector, spring terminal, or printed circuit board
- 

Robustness to withstand harsh environments
- 

Large set of accessories to customize your panels

Offer Marketing Illustration

Product benefits / Features

Technical Benefits

Harmony XB5



Image of product / Alternate images

Alternative





