

Produktdatablad

Specifikationer



Harmony trykknaphoved i plast med fjeder-retur og plan trykflade i grøn farve med hvidt "I"

El-nr.:
7517901190

ZB5AA331

EAN-nr: 3389110904536

Egenskaber

| | |
|---------------------------------|---------------------|
| Produktserie | Harmony XB5 |
| Produkttype | Hoved til trykknop |
| Enhedsforkortelse | ZB5 |
| Materiale og farve på frontring | Mørkegrå plast |
| Montagediameter | 22 mm |
| Hovedtype | Standard |
| Mindst mulige salgsantal | 1 |
| Form på hoved | Rundt |
| Betjeningsprofil | fjeder-retur |
| Betjeningsprofil | Grøn Plan, I (Hvid) |

Produktinformationer

| | |
|----------------------------------|---|
| Bredde | 29 mm |
| Højde | 29 mm |
| Dybde | 28 mm |
| Vægt | 0,018 kg |
| Mekanisk holdbarhed | 10000000 kredsløb |
| Kanalnavn | XALD 1...5 montagehuller XALK 2...5 montagehuller |
| Kode for elektrisk sammensætning | C1 til <9 kontakter benytter enkelt blokke i Montering forfra C2 til <9 kontakter benytter enkelt og dobbelt blokke i Montering forfra C11 til <3 kontakter benytter enkelt blokke i Montering forfra C15 til <1 kontakter benytter enkelt blokke i Montering forfra SF1 til <3 kontakter benytter enkelt blokke i Montering forfra SR1 til <3 kontakter benytter enkelt blokke i Montering bagfra |
| Konstruktion | Som løsdeler |

Miljø

| | |
|-------------------------------------|---|
| Beskyttelsesbehandling | TH |
| Omgivelsestemperatur ved opbevaring | -40...70 °C |
| Omgivelsestemperatur under drift | -40...70 °C |
| Overspændingskategori | Klasse II conforming to IEC 60536 |
| IP kapslingsklasse | IP66 i henhold til IEC 60529 IP67 IP69 IP69K |

| | |
|--|--|
| NEMA kapslingsklasse | NEMA 13 NEMA 4X |
| Modstandsdygtighed overfor højtryksrensning | 7000000 Pa ved 55 °C, distance : 0.1 m |
| IP kapslingsklasse | IK03 conforming to IEC 50102 |
| Standarder | CSA C22.2 No 14 JIS C8201-5-1 IEC 60947-5-1 IEC 60947-5-4 UL 508 IEC 60947-1 JIS C8201-1 |
| Produktcertificeringer | DNV CSA BV LROS (Lloyds register of shipping) UL listet |
| Modstandsdygtighed overfor stød | 30 gn (varighed = 18 milisekund) til Halv sinusbølge acceleration i henhold til IEC 60068-2-27 50 gn (varighed = 11 milisekund) til Halv sinusbølge acceleration i henhold til IEC 60068-2-27 |
| Vibrationsmodstand | 5 gn (f= 2...500 Hz) conforming to IEC 60068-2-6 |

Forpakkingsinformation

| | |
|--------------------------------|-----------|
| Enhedstype af pakke 1 | PCE |
| Antal enheder i pakke 1 | 1 |
| Pakke 1 Højde | 4,500 cm |
| Pakke 1 Længde | 3,400 cm |
| Package 1 Length | 5,400 cm |
| Pakke 1 Vægt | 17,000 g |
| Enhedstype af pakke 2 | S03 |
| Antal enheder i pakke 2 | 300 |
| Pakke 2 Højde | 30,000 cm |
| Pakke 2 Bredde | 30,000 cm |
| Pakke 2 Længde | 40,000 cm |
| Pakke 2 Vægt | 5,578 kg |
| Enhedstype af pakke 3 | P06 |
| Antal enheder i pakke 3 | 2400 |
| Pakke 3 Højde | 75,000 cm |
| Pakke 3 Bredde | 60,000 cm |
| Pakke 3 Længde | 80,000 cm |
| Pakke 3 Vægt | 55,484 kg |

Logistik informationer

| | |
|------------------------|----|
| Oprindelsesland | FR |
|------------------------|----|

Garanti

| | |
|----------------|-----------|
| Garanti | 18 months |
|----------------|-----------|

Environmental Data

Schneider Electric's mål er at opnå Net Zero-status i 2050 gennem partnerskaber med forsyningskæden, materialer med lavere påvirkning og cirkularitet via vores igangværende kampagne "Use Better, Use Longer, Use Again" for at forlænge produkternes levetid og genbrugelighed.

[Forklaring af Environmental Data >](#)

[Sådan vurderer vi produktets bæredygtighed >](#)

Miljøfodaftryk

CO2-belastning (kg CO2 eq.) 1

Miljøoplysning [Miljøprofil for produkt](#)

Use Better

Materialer og emballage

Pakke med genbrugspap Yes

Emballage uden plast Yes

[EU RoHS-direktivet](#)

Proaktiv overensstemmelse (produkt ikke omfattet af EU RoHS)

Reach-forordning

[REACH-erklæring](#)

Use Again

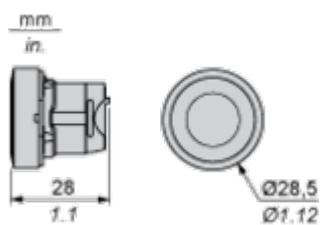
Ompakning og genfremstilling

Cirkularitetsprofil [Oplysninger om udtjent udstyr](#)

Returnering No

Dimensions Drawings

Dimensions



Mounting and Clearance

Panel Cut-out for Pushbuttons, Switches and Pilot Lights (Finished Holes, Ready for Installation)

Connection by Screw Clamp Terminals or Plug-in Connectors or on Printed Circuit Board



- (1) Diameter on finished panel or support
- (2) For selector switches and Emergency stop buttons, use of an anti-rotation plate type ZB5AZ902 is recommended.
- (3) Ø22.5 mm recommended ($\text{Ø}22.3_0^{+0.4}$) / Ø0.89 in. recommended ($\text{Ø}0.88_0^{+0.016}$)

| Connections | a in mm | a in in. | b in mm | b in in. |
|---|---------|----------|---------|----------|
| By screw clamp terminals or plug-in connector | 40 | 1.57 | 30 | 1.18 |
| By Faston connectors | 45 | 1.77 | 32 | 1.26 |
| On printed circuit board | 30 | 1.18 | 30 | 1.18 |

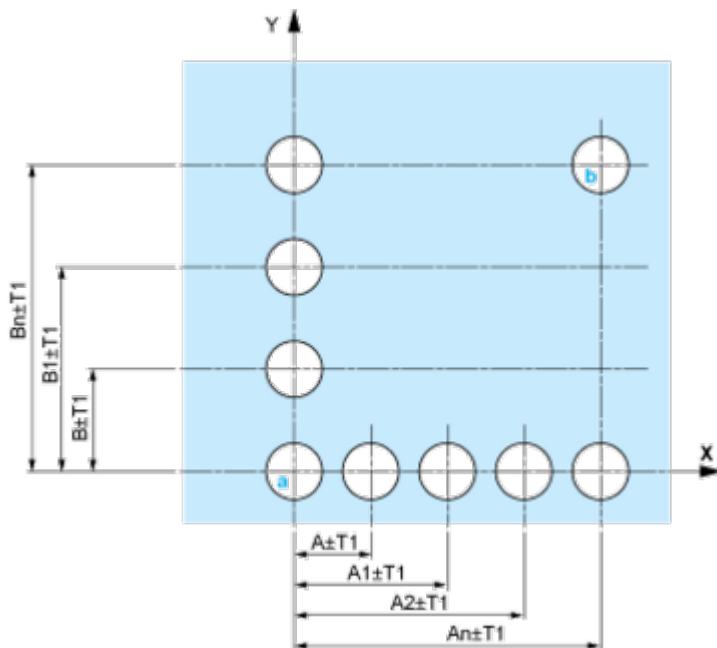
Detail of Lug Recess



- (1) Diameter on finished panel or support
- (2) For selector switches and Emergency stop buttons, use of an anti-rotation plate type ZB5AZ902 is recommended.
- (3) Ø22.5 mm recommended ($\text{Ø}22.3_0^{+0.4}$) / Ø0.89 in. recommended ($\text{Ø}0.88_0^{+0.016}$)

Pushbuttons, Switches and Pilot Lights for Printed Circuit Board Connection

Panel Cut-outs (Viewed from Installer's Side)

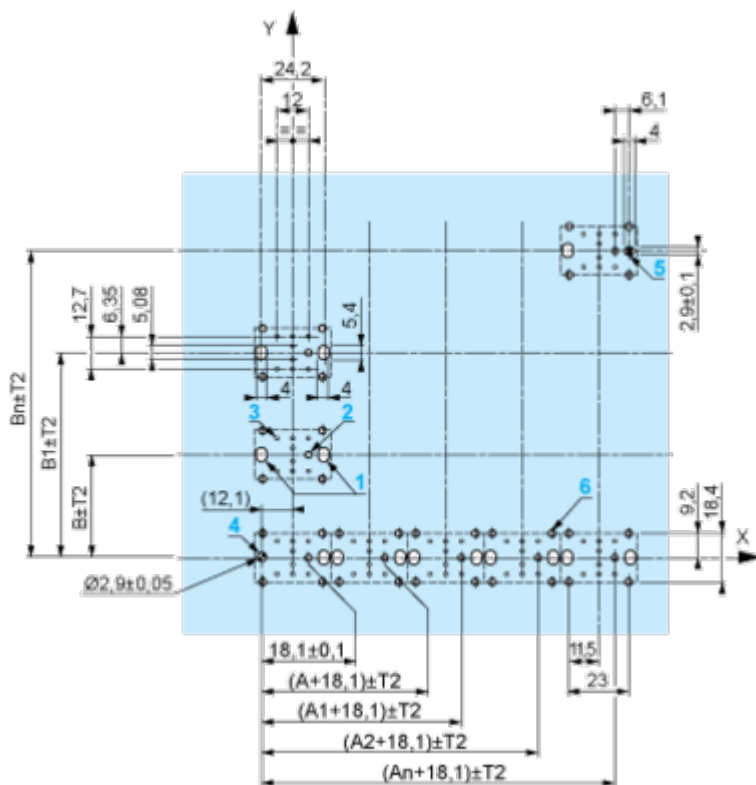


A: 30 mm min. / 1.18 in. min.

B: 40 mm min. / 1.57 in. min.

Printed Circuit Board Cut-outs (Viewed from Electrical Block Side)

Dimensions in mm



A: 30 mm min.

B: 40 mm min.

Dimensions in in.



A: 1.18 in. min.
 B: 1.57 in. min.

General Tolerances of the Panel and Printed Circuit Board

The cumulative tolerance must not exceed 0.3 mm / 0.012 in.: T1 + T2 = 0.3 mm max.

Installation Precautions

- Minimum thickness of circuit board: 1.6 mm / 0.06 in.
- Cut-out diameter: 22.4 mm ± 0.1 / 0.88 in. ± 0.004
- Orientation of body/fixing collar ZB5AZ009: ± 2° 30' (excluding cut-outs marked a and b).
- Tightening torque of screws ZBZ006: 0.6 N.m (5.3 lbf.in) max.
- Allow for one ZB5AZ079 fixing collar/pillar and its fixing screws:
 - every 90 mm / 3.54 in. horizontally (X), and 120 mm / 4.72 in. vertically (Y).
 - with each selector switch head (ZB5AD*, ZB5AJ*, ZB5AG*).

The fixing centers marked a and b are diagonally opposed and must align with those marked 4 and 5.



- (1) Head ZB5AD•
- (2) Panel
- (2) Nut
- (4) Printed circuit board

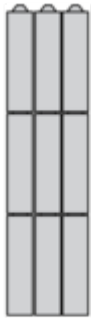
Mounting of Adapter (Socket) ZBZ01•

- 1 2 elongated holes for ZBZ006 screw access
- 2 1 hole \varnothing 2.4 mm \pm 0.05 / 0.09 in. \pm 0.002 for centring adapter ZBZ01•
- 3 8 \times \varnothing 1.2 mm / 0.05 in. holes
- 4 1 hole \varnothing 2.9 mm \pm 0.05 / 0.11 in. \pm 0.002, for aligning the printed circuit board (with cut-out marked **a**)
- 5 1 elongated hole for aligning the printed circuit board (with cut-out marked **b**)
- 6 4 holes \varnothing 2.4 mm / 0.09 in. for clipping in adapter ZBZ01•

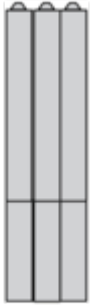
Dimensions An + 18.1 relate to the \varnothing 2.4 mm \pm 0.05 / 0.09 in. \pm 0.002 holes for centring adapter ZBZ01•.

Technical Description

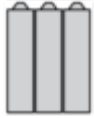
Electrical Composition Corresponding to Code C1



Electrical Composition Corresponding to Code C2



Electrical Composition Corresponding to Codes C9, C11, SF1 and SR1



Electrical Composition Corresponding to Code C15

1 N/O



1 N/C



1 N/O + N/C or 1 N/O + N/O or 1 N/C + N/C



Legend

Single contact



Double contact



Light block

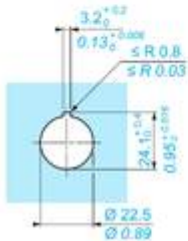
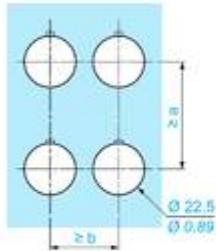
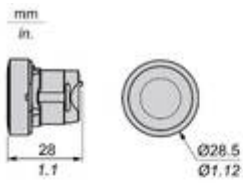


Possible location



Technical Illustration

Dimensions



| | | a (mm) | a (in.) | b (mm) | b (in.) |
|-----------|-----------|--------|---------|--------|---------|
| | | 40 | 1.57 | 30 | 1.18 |
| ZBE..... | ZBV..... | | | | |
| | | 45 | 1.77 | 32 | 1.26 |
| ZBE.....3 | ZBV.....3 | | | | |
| | | 40 | 1.57 | 30 | 1.18 |
| ZBE.....4 | ZBV.....4 | | | | |
| | | 50 | 1.97 | 30 | 1.18 |
| ZBE.....5 | ZBV.....5 | | | | |
| | | 40 | 1.57 | 30 | 1.18 |
| ZBE.....9 | ZBV.....9 | | | | |
| | | 40 | 1.57 | 30 | 1.18 |
| ZBRT.. | ZBRV1 | | | | |

Offer Marketing Illustration

Product benefits / Features

Features Harmony XB5



- 

Quick and easy assembly and disassembly
- 

Excellent mechanical connection with operator head
- 

Various types of connection: screw clamp, connector, Faston connector, spring terminal, or printed circuit board
- 

Large set of accessories to customize your panels
- 

Robustness to withstand harsh environments

Offer Marketing Illustration

Product benefits / Features

Technical Benefits

Harmony XB5



Image of product / Alternate images

Alternative



