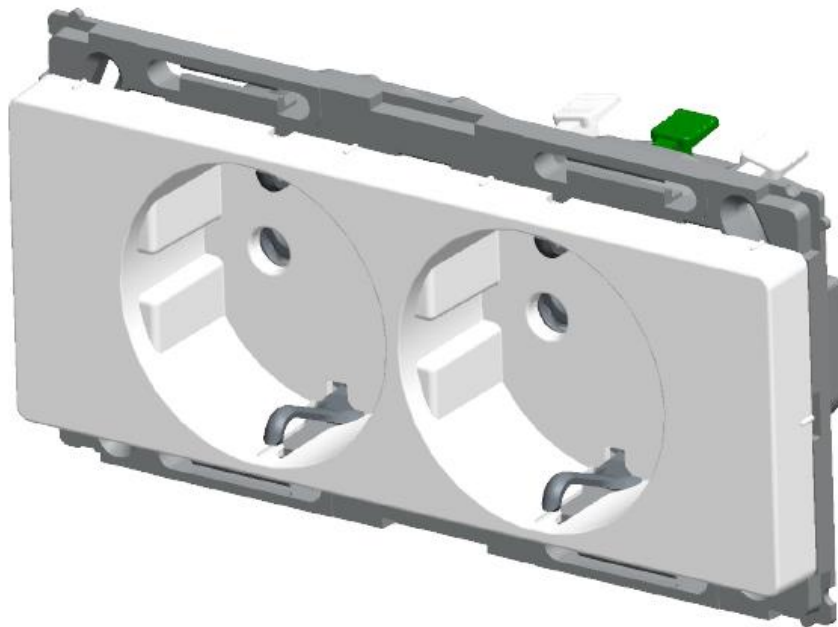


# Product Environmental Profile

## OPUS66 SIDE EARTH DSO 2M WHITE





## General information

### Representative product

OPUS66 SIDE EARTH DSO 2M WHITE - AAK501N6362

### Description of the product

The main function of the OPUS66 Side Earth socket is to allow users to connect and disconnect the plug of an electrical load or the source of a signal from a network.

### Functional unit

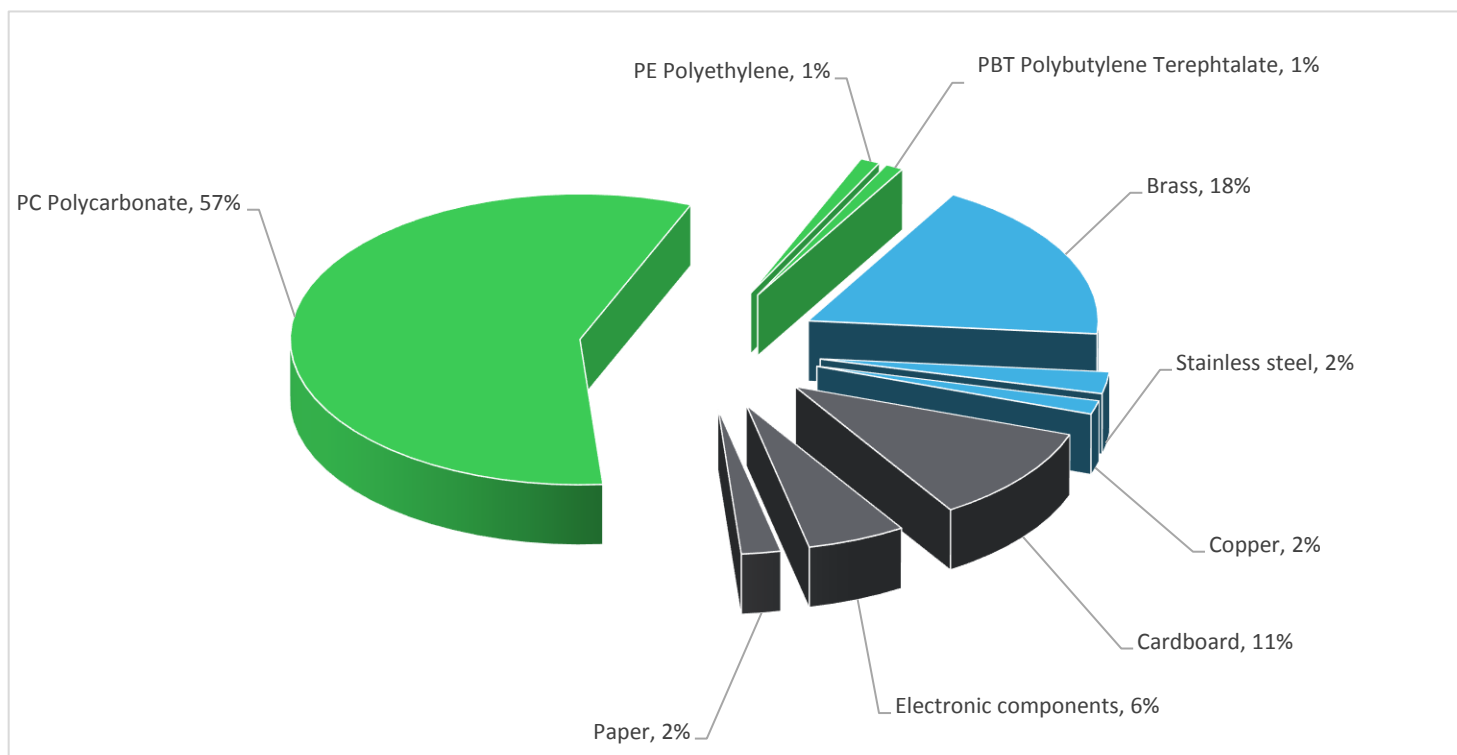
Connect/Disconnect during 20 years the plug of a load consuming 16A under a voltage of 250V while protecting the user from direct contact with live parts.



## Constituent materials

### Reference product mass

89.8 g including the product, its packaging and additional elements and accessories



|          |       |
|----------|-------|
| Plastics | 59.6% |
| Metals   | 22.0% |
| Others   | 18.4% |



## Substance assessment

Products of this range are designed in conformity with the requirements of the RoHS directive (European Directive 2011/65/EU of 8 June 2011) and do not contain, or only contain in the authorised proportions, lead, mercury, cadmium, hexavalent chromium or flame retardants (polybrominated biphenyls - PBB, polybrominated diphenyl ethers - PBDE) as mentioned in the Directive

As the products of the range are designed in accordance with the RoHS Directive (European Directive 2002/95/EC of 27 January 2003), they can be incorporated without any restriction in an assembly or an installation subject to this Directive.

Details of ROHS and REACH substances information are available on the Schneider-Electric Green Premium website

<http://www2.schneider-electric.com/sites/corporate/en/products-services/green-premium/green-premium.page>



## Additional environmental information

The OPUS66 SIDE EARTH DSO 2M WHITE presents the following relevant environmental aspects

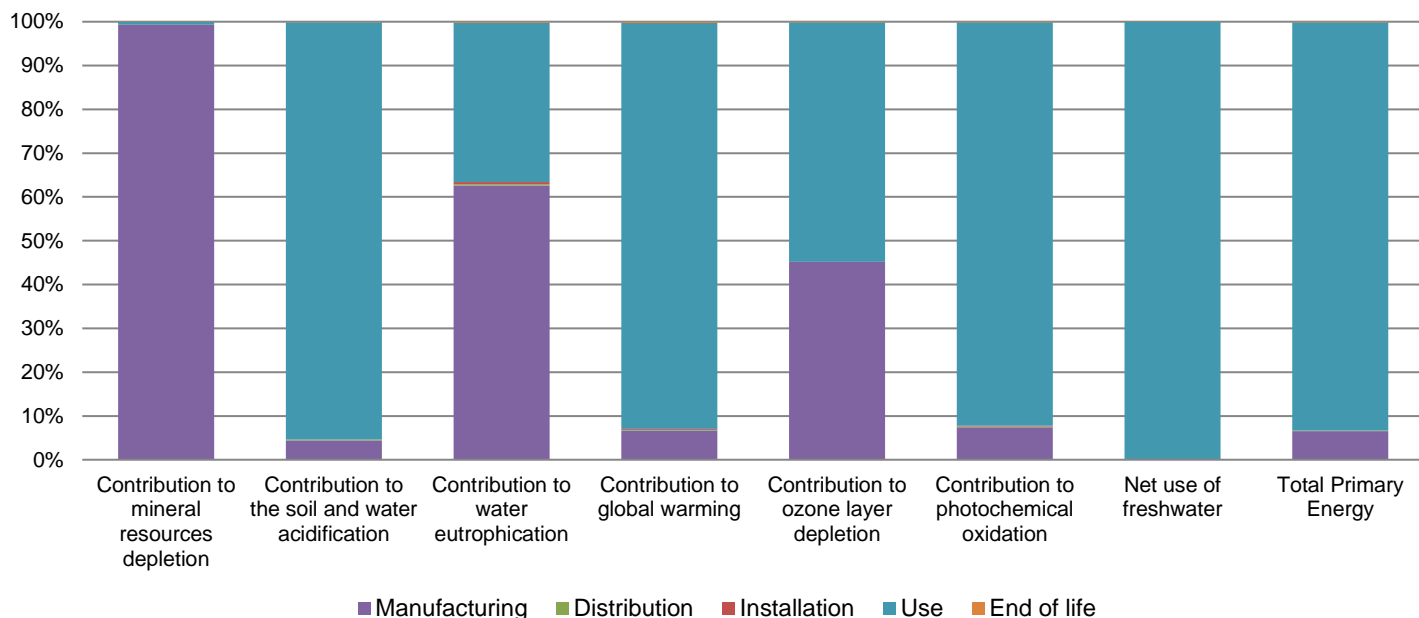
|                      |   |
|----------------------|---|
| <b>Design</b>        | Indicate all the eco-design improvements brought to the product at the design phase compared to previous offer range, refer to ecoDesign Way results  |
| <b>Manufacturing</b> | Manufactured at a Schneider Electric production site ISO14001 certified   |
| <b>Distribution</b>  | Weight and volume of the packaging optimized, based on the European Union's packaging directive<br>Packaging weight is 12.8 g, consisting of cardboard (76.56%), PE-LD (7.81%), Paper (15.62%)  |
| <b>Installation</b>  | The product does not require special installation procedure and requires little to no energy to install. The disposal of the packaging materials are accounted for during the installation phase (including transport to disposal).   |
| <b>Use</b>           | The product does not require special maintenance operations.  |
| <b>End of life</b>   | End of life optimized to decrease the amount of waste and allow recovery of the product components and materials<br><br>No special end-of-life treatment required. According to countries' practices this product can enter the usual end-of-life treatment process.<br><br>Recyclability potential: <b>21%</b> Based on "ECO'DEEE recyclability and recoverability calculation method" (version V1, 20 Sep. 2008 presented to the French Agency for Environment and Energy Management: ADEME). |



## Environmental impacts

|   |  |  |  |  |
|---|--|--|--|--|
| <b>Reference life time</b>              | 20 years   |  |  |  |
| <b>Product category</b>                 | Power socket   |  |  |  |
| <b>Installation elements</b>            | No special components needed   |  |  |  |
| <b>Use scenario</b>                     | Load rate: 50 % of In<br>Use rate: 50% of the RLT  |  |  |  |
| <b>Geographical representativeness</b>  | Denmark  |  |  |  |
| <b>Technological representativeness</b> | The main function of the OPUS66 Side Earth socket is to allow users to connect and disconnect the plug of an electrical load or the source of a signal from a network. |  |  |  |
| <b>Energy model used</b>                | <b>Manufacturing</b>   | <b>Installation</b>  | <b>Use</b>   | <b>End of life</b>   |
|   | Energy model used: Denmark - Ringsted  | Electricity grid mix; AC; consumption mix, at consumer; < 1kV; EU-27 | Electricity grid mix; AC; consumption mix, at consumer; < 1kV; EU-27 | Electricity grid mix; AC; consumption mix, at consumer; < 1kV; EU-27 |

| Compulsory indicators                            |                                     | OPUS66 SIDE EARTH DSO 2M WHITE - AAK501N6362 |               |              |              |          |             |
|--|-------------------------------------|--|---------------|--------------|--------------|----------|-------------|
| Impact indicators                                | Unit                                | Total  | Manufacturing | Distribution | Installation | Use      | End of Life |
| Contribution to mineral resources depletion      | kg Sb eq                            | 9.44E-05                                     | 9.38E-05      | 0*           | 0*           | 5.95E-07 | 0*          |
| Contribution to the soil and water acidification | kg SO <sub>2</sub> eq               | 2.99E-02                                     | 1.32E-03      | 5.29E-05     | 0*           | 2.86E-02 | 2.68E-05    |
| Contribution to water eutrophication             | kg PO <sub>4</sub> <sup>3-</sup> eq | 4.74E-03                                     | 2.97E-03      | 1.22E-05     | 2.64E-05     | 1.72E-03 | 8.48E-06    |
| Contribution to global warming                   | kg CO <sub>2</sub> eq               | 7.39E+00                                     | 4.94E-01      | 1.16E-02     | 1.53E-02     | 6.85E+00 | 2.00E-02    |
| Contribution to ozone layer depletion            | kg CFC11 eq                         | 8.15E-07                                     | 3.69E-07      | 0*           | 0*           | 4.46E-07 | 7.67E-10    |
| Contribution to photochemical oxidation          | kg C <sub>2</sub> H <sub>4</sub> eq | 1.70E-03                                     | 1.26E-04      | 3.78E-06     | 2.78E-06     | 1.57E-03 | 2.77E-06    |
| Resources use                                    | Unit                                | Total  | Manufacturing | Distribution | Installation | Use      | End of Life |
| Net use of freshwater                            | m3                                  | 2.48E+01                                     | 6.26E-03      | 0*           | 0*           | 2.48E+01 | 0*          |
| Total Primary Energy                             | MJ                                  | 1.47E+02                                     | 9.61E+00      | 1.64E-01     | 0*           | 1.37E+02 | 1.36E-01    |



| Optional indicators   |      | OPUS66 SIDE EARTH DSO 2M WHITE - AAK501N6362 |               |              |              |          |             |
|---|------|--|---------------|--------------|--------------|----------|-------------|
| Impact indicators   | Unit | Total  | Manufacturing | Distribution | Installation | Use      | End of Life |
| Contribution to fossil resources depletion  | MJ   | 8.65E+01                                     | 8.50E+00      | 1.63E-01     | 0*           | 7.77E+01 | 1.21E-01    |
| Contribution to air pollution   | m³   | 4.09E+02                                     | 1.13E+02      | 4.93E-01     | 0*           | 2.95E+02 | 9.62E-01    |
| Contribution to water pollution   | m³   | 4.15E+02                                     | 1.23E+02      | 1.91E+00     | 6.33E-01     | 2.82E+02 | 6.50E+00    |
| Resources use   | Unit | Total  | Manufacturing | Distribution | Installation | Use      | End of Life |
| Use of secondary material   | kg   | 1.53E-02                                     | 1.53E-02      | 0*           | 0*           | 0*       | 0*          |
| Total use of renewable primary energy resources   | MJ   | 1.76E+01                                     | 2.44E-01      | 0*           | 0*           | 1.74E+01 | 0*          |
| Total use of non-renewable primary energy resources   | MJ   | 1.29E+02                                     | 9.37E+00      | 1.64E-01     | 0*           | 1.19E+02 | 1.36E-01    |
| Use of renewable primary energy excluding renewable primary energy used as raw material         | MJ   | 1.76E+01                                     | 2.14E-01      | 0*           | 0*           | 1.74E+01 | 0*          |
| Use of renewable primary energy resources used as raw material                                  | MJ   | 3.03E-02                                     | 3.03E-02      | 0*           | 0*           | 0*       | 0*          |
| Use of non renewable primary energy excluding non renewable primary energy used as raw material | MJ   | 1.27E+02                                     | 7.32E+00      | 1.64E-01     | 0*           | 1.19E+02 | 1.36E-01    |
| Use of non renewable primary energy resources used as raw material                              | MJ   | 2.05E+00                                     | 2.05E+00      | 0*           | 0*           | 0*       | 0*          |
| Use of non renewable secondary fuels  | MJ   | 0.00E+00                                     | 0*            | 0*           | 0*           | 0*       | 0*          |
| Use of renewable secondary fuels  | MJ   | 0.00E+00                                     | 0*            | 0*           | 0*           | 0*       | 0*          |
| Waste categories  | Unit | Total  | Manufacturing | Distribution | Installation | Use      | End of Life |
| Hazardous waste disposed  | kg   | 1.72E+00                                     | 1.57E+00      | 0*           | 0*           | 3.57E-03 | 1.46E-01    |
| Non hazardous waste disposed  | kg   | 2.61E+01                                     | 5.57E-01      | 0*           | 5.55E-03     | 2.55E+01 | 0*          |
| Radioactive waste disposed  | kg   | 1.74E-02                                     | 3.21E-04      | 0*           | 0*           | 1.70E-02 | 0*          |
| Other environmental information   | Unit | Total  | Manufacturing | Distribution | Installation | Use      | End of Life |
| Materials for recycling   | kg   | 2.06E-02                                     | 3.94E-03      | 0*           | 0*           | 0*       | 1.67E-02    |

|                               |    |          |          |    |          |    |          |
|-------------------------------|----|----------|----------|----|----------|----|----------|
| Components for reuse          | kg | 0.00E+00 | 0*       | 0* | 0*       | 0* | 0*       |
| Materials for energy recovery | kg | 3.04E-03 | 3.86E-04 | 0* | 0*       | 0* | 2.65E-03 |
| Exported Energy               | MJ | 5.73E-04 | 0*       | 0* | 5.73E-04 | 0* | 0*       |

\* represents less than 0.01% of the total life cycle of the reference flow

Life cycle assessment performed with EIME version EIME v5.6.0.1, database version 2016-11 in compliance with ISO14044.

The use phase is the life cycle phase which has the greatest impact on the majority of environmental indicators (based on compulsory indicators).

Please note that the values given above are only valid within the context specified and cannot be used directly to draw up the environmental assessment of an installation.

|   |                     |                                     |  |
|---|---------------------|-------------------------------------|--|
| Registration number   | ENVPEP1707005_V1-EN | Drafting rules                      | PCR-ed3-EN-2015 04 02  |
| Date of issue   | 09/2017             | Supplemented by                     | PSR-0005-ed2-EN-2016 03 29   |
| Validity period   | 5 years             | Information and reference documents | <a href="http://www.pep-ecopassport.org">www.pep-ecopassport.org</a> |
| Independent verification of the declaration and data  |                     |                                     |  |
| Internal  | X                   | External                            |  |
| The elements of the present PEP cannot be compared with elements from another program.  |                     |                                     |  |
| Document in compliance with ISO 14021:2016 « Environmental labels and declarations - Self-declared environmental claims (Type II environmental labelling) » |                     |                                     |  |

Schneider Electric Industries SAS

Country Customer Care Center  
<http://www.schneider-electric.com/contact>

35, rue Joseph Monier  
 CS 30323  
 F- 92506 Rueil Malmaison Cedex  
 RCS Nanterre 954 503 439  
 Capital social 896 313 776 €

[www.schneider-electric.com](http://www.schneider-electric.com)

Published by Schneider Electric

ENVPEP1707005\_V1-EN

© 2017 - Schneider Electric – All rights reserved

09/2017