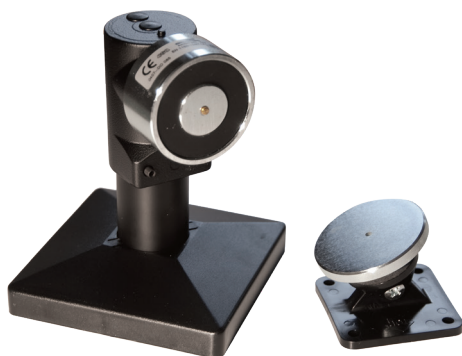


# 2.2

## Electromagnetic door release units

Series 1370 / 1380

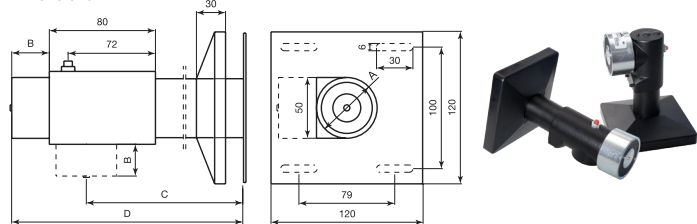


- EN 1155 approved
- Floor, wall or ceiling mounting
- Holding strength 50 and 100 Kg
- Release button
- Damping counter plate included
- Adjustable mounting height within 30 mm

### Series 1370 / 1380

Core support material	Aluminium, black epoxy painting
Core material	Steel
Bracket material	Steel, black epoxy painting
Cover material material	Thermoplastic, black
Keeper plate material	Black thermoplastic support, steel plate
Operation	Released when de-energised
Type of connection	Wires
Operating temperature	-10°C to +55°C
Protection rating	IP40
Standard equipment	Flexible keeper plate. Release button, base cover, protection diodes

### Dimensions



### Order codes

Code	Holding strength $\pm 15\%$	Nominal voltage	Nominal current	Core diameter A	Height B	Height C	Height D	Counter-plate provided	Package weight	Notes
1370-15-D	50 Kg/490 N	24 Vdc	45 mA	50 mm	28 mm	127÷157 mm	180÷210 mm	Code 1351	1.2 Kg	2 protection diodes
1370-30-D	50 Kg/490 N	24 Vdc	45 mA	50 mm	28 mm	277÷307 mm	330÷360 mm	Code 1351	1.45 Kg	2 protection diodes
1380-15-D	100 Kg/980 N	24 Vdc	100 mA	60 mm	32.5 mm	127÷157 mm	185÷215 mm	Code 1361	1.43 Kg	2 protection diodes
1380-30-D	100 Kg/980 N	24 Vdc	100 mA	60 mm	32.5 mm	277÷307 mm	335÷365 mm	Code 1361	1.68 Kg	2 protection diodes

Certificate and Declaration of Performance available on our website [www.coopercsa.it](http://www.coopercsa.it)

### Accessories

1353-CSA	55 mm diameter adjustable keeper plate
1363-CSA	60 mm diameter adjustable keeper plate

## Series 1370 / 1380

### Floor and wall mounted electromagnetic door release unit

Aluminium electromagnetic door release unit for fire doors equipped with an release button. Thanks to two different core mounting positions, axial and perpendicular, and to the adjustable head within 30mm, both wall and floor mounting is possible.

The aluminium case with epoxy varnishing ensures a high robustness. The suitable cover of the base conceals the fixing screws to provide excellent aesthetic results. Provided with dual protection diode against disturbances and polarity reversals.

A built-in spring release allows residual magnetic forces to be overcome thus ensuring quick, reliable door release. The strong metallic structure and its versatile installation options make this door release unit an ideal solution for hospitals, hotels, shopping centres, and industrial warehouses. Provided with counter-plate.

EN 1155 approved.