

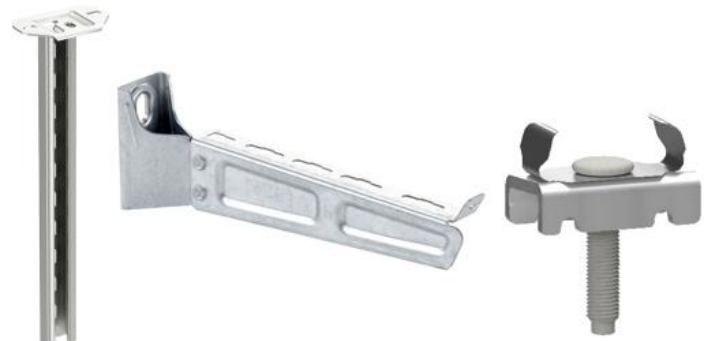
No: GEX6132300

REV: 04

EU DECLARATION OF CONFORMITY

We undersigned AB WIBE declare that WIBE branded products, when subject to correct installation, maintenance and use conforming to their intended purpose, according to applicable regulations and standards in the country where they are installed, to the supplier's instructions and to accepted rules of the art comply with Essential Requirements of following European Directives.

Mr Mahesh Nanjundaiah
Chief Technology Officer
August 22nd 2024



CE Marking:



TYPE OF PRODUCT: System Components

MODELS: Wibe / Defem

REFERENCES: APPENDIX 1

LOW VOLTAGE: 2014/35/EU

BASED ON FOLLOWING STANDARDS: EN 61537:2007

TECHNICAL FILE: NHA5048301-06 WG_TE_WIBE Accessories

CE FILE: NHA5048302-06 WG_CE_WIBE Accessories

OWNER
WIBE GROUP
Wibevägen 1,
792 36 Mora, Sweden

MANUFACTURER
WIBE AB
Wibevägen 1,
792 36 Mora, Sweden

No: GEX6132300
WG_DOC_20210013_V3.0
Wibe-group.com

1/25



APPENDIX 1

CR	Description
731791	Angle bracket 5L HDG
731792	Angle bracket 5L HDG White
731793	Angle bracket 5L SS316L
709801	Angle bracket 5LS HDG
720529	Angle bracket 5LS HDG White
725636	Angle bracket 5LS SS316L
728653	Clamp 12/70 Hdg
732977	Clamp 12/70 Hdg White
728651	Clamp 12/70 AISI316
728654	Clamp 12/120 Hdg
732978	Clamp 12/120 Hdg White
728652	Clamp 12/120 AISI316
782353	Combi Bracket 53
787223	Insulating plate 54
717618	End Bracket HT-11
709018	End connection 10
714085	End connection 10 White
792727	Pendant bar 1-300 Pre-galv.
717640	Pendant bar 1-300 Hdg
717643	Pendant bar 1-300 Hdg White
792728	Pendant bar 1-500 Pre-galv.
717641	Pendant bar 1-500 Hdg
717644	Pendant bar 1-500 Hdg White
GSU795328	Pendant bar 1-500 SS316L
792729	Pendant bar 1-800 Pre-galv.
717642	Pendant bar 1-800 Hdg
717645	Pendant bar 1-800 Hdg White
718903	Pendant bar 1-1500 Hdg
720530	Pendant bar 1-1500 Hdg White
708001	Profile support piece 46 Hdg
714179	Profile support piece 46 Hdg White
792877	Prof. support piece 46 AISI316
718850	Rail fixing support 24/20F HDG
720527	Rail fixing support 24/20F HDG White

OWNER
WIBE GROUP
Wibevägen 1,
792 36 Mora, Sweden

MANUFACTURER
WIBE AB
Wibevägen 1,
792 36 Mora, Sweden

No: GEX6132300
WG_DOC_20210013_V3.0
Wibe-group.com

2/25



718851	Rail fixing support 24/20FS HDG
720528	Rail fixing support 24/20FS HDG White
786768	Rod bracket 82
721105	Wall bracket 11/25 Pre-galv.
713204	Wall bracket 11/25 Hdg
713208	Wall bracket 11/25 White
725774	Wall bracket 11/25 AISI316
721106	Wall bracket 11/75 Pre-galv.
713203	Wall bracket 11/75 Hdg
713209	Wall bracket 11/75 White
725775	Wall bracket 11/75 AISI316
723450	Wall bracket 20 Hdg
723451	Wall bracket 20F Hdg
735998	Cable roller 38 Rig'n roll
780186	Cable roller Bag
718660	Cable roller S
780187	Cable roller set 66
723432	Cantilever arm 50-100 Hdg
723433	Cantilever arm 50-150 Hdg
723434	Cantilever arm 50-200 Hdg
723435	Cantilever arm 50-250 Hdg
723436	Cantilever arm 50-300 Hdg
723437	Cantilever arm 50-400 Hdg
723438	Cantilever arm 50-500 Hdg
723439	Cantilever arm 50-600 Hdg
727125	Cantilever arm 50-700 Hdg
727126	Cantilever arm 50-800 Hdg
727127	Cantilever arm 50-900 Hdg
727128	Cantilever arm 50-1000 Hdg
723440	Cantilever arm 50-100 Hdg White
723441	Cantilever arm 50-150 Hdg White
723442	Cantilever arm 50-200 Hdg White
723443	Cantilever arm 50-250 Hdg White
723444	Cantilever arm 50-300 Hdg White
723445	Cantilever arm 50-400 Hdg White
723446	Cantilever arm 50-500 Hdg White
723447	Cantilever arm 50-600 Hdg White

OWNER
WIBE GROUP
Wibevägen 1,
792 36 Mora, Sweden

MANUFACTURER
WIBE AB
Wibevägen 1,
792 36 Mora, Sweden

No: GEX6132300
WG_DOC_20210013_V3.0
Wibe-group.com



727782	Cantilever arm 50-700 Hdg White
727783	Cantilever arm 50-800 Hdg White
727784	Cantilever arm 50-900 Hdg White
727785	Cantilever arm 50-1000 Hdg White
725618	Cantilever arm 50-100 AISI316
725619	Cantilever arm 50-150 AISI316
725620	Cantilever arm 50-200 AISI316
725621	Cantilever arm 50-250 AISI316
725622	Cantilever arm 50-300 AISI316
725623	Cantilever arm 50-400 AISI316
725624	Cantilever arm 50-500 AISI316
725625	Cantilever arm 50-600 AISI316
718624	Cantilever arm 50F-200 Hdg
718625	Cantilever arm 50F-300 Hdg
718626	Cantilever arm 50F-400 Hdg
718627	Cantilever arm 50F-500 Hdg
718628	Cantilever arm 50F-600 Hdg
712465	Cantilever arm 50F-1000 Hdg
714021	Cantilever arm 50F-200 Hdg White
714700	Cantilever arm 50F-300 Hdg White
714022	Cantilever arm 50F-400 Hdg White
718793	Cantilever arm 50F-500 Hdg White
714023	Cantilever arm 50F-600 Hdg White
714024	Cantilever arm 50F-1000 Hdg White
791412	Cantilever arm 50i -100 PG
791416	Cantilever arm 50i -100 PG White
CSU795316	Cantilever arm 50i -100 HDG
791413	Cantilever arm 50i -200 PG
791417	Cantilever arm 50i -200 PG White
CSU795317	Cantilever arm 50i -200 HDG
791414	Cantilever arm 50i -300 PG
791418	Cantilever arm 50i -300 PG White
CSU795318	Cantilever arm 50i -300 HDG
791415	Cantilever arm 50i -400 PG
791419	Cantilever arm 50i -400 PG White
CSU795319	Cantilever arm 50i -400 HDG
CSU795322	Cantilever arm 50i -500 PG

OWNER
WIBE GROUP
Wibevägen 1,
792 36 Mora, Sweden

MANUFACTURER
WIBE AB
Wibevägen 1,
792 36 Mora, Sweden

No: GEX6132300
WG_DOC_20210013_V3.0
Wibe-group.com



CSU795363	Cantilever arm 50i -500 PG White
CSU795320	Cantilever arm 50i -500 HDG
CSU795323	Cantilever arm 50i -600 PG
CSU795364	Cantilever arm 50i -600 PG White
CSU795321	Cantilever arm 50i -600 HDG
768738	Back plate 40 Hdg
714029	Back plate 40 Hdg White
717001	Mounting rail 40S Hdg
729045	Mounting rail 40S Hdg White
715675	Beam clamp 5BK-10 Hdg
716294	Beam clamp 5BK-10 Hdg White
718243	Beam clamp 5BK-30 Hdg
718487	Beam clamp 5BK-30 Hdg White
792554	Ceiling bracket 2Fi pre-galv.
721101	Ceiling bracket 5 Pre-galv.
718640	Ceiling bracket 5 Hdg
716293	Ceiling bracket 5 Hdg White
725573	Ceiling bracket 5 AISI316
725362	Ceiling bracket 5TP PRE-GALV
713153	Ceiling bracket 5TP Hdg
716295	Ceiling bracket 5TP Hdg White
732177	Ceiling bracket 5TPA PRE-GALV
733487	Ceiling bracket 5TPA HDG
733486	Ceiling bracket 5TPA Hdg White
788164	Ceiling bracket TF-10 Hdg
788165	Ceiling bracket TF-16 Hdg
718253	Pendant Base Plate 520 Hdg
718488	Pendant Base Plate 520 Hdg White
718849	Ceiling plate 20F Hdg
720536	Ceiling plate 20FS Hdg
CSU795220	Wall support 550 mm PG
CSU795221	Wall support 550 mm PG white
CSU795365	Wall support 550 mm HDG
CSU795366	Wall support 550 mm Zinkpox white
CSU795367	Wall support 550 mm AISI316L
784061	Threaded rod W76 M6-1000 Electro-galv.
792934	Threaded rod W76 M6-2000 Electro-galv.

OWNER
WIBE GROUP
Wibevägen 1,
792 36 Mora, Sweden

MANUFACTURER
WIBE AB
Wibevägen 1,
792 36 Mora, Sweden

No: GEX6132300
WG_DOC_20210013_V3.0
Wibe-group.com



792935	Threaded rod W76 M6-3000 Electro-galv.
725079	Threaded rod M8 W76 1m El-galv.
729061	Threaded rod M8 W76 2m White
729062	Threaded rod M8 W76 3m White
CSU794697	Threaded rod M8 W76 1m Hdg
CSU794698	Threaded rod M8 W76 2m Hdg
734737	Threaded rod M10 W76 1m El-galv.
716792	Threaded rod M10 W76 2m El-galv.
716793	Threaded rod M10 W76 3m El-galv.
723925	Threaded rod W76 M10 L=2M AISI316
723926	Threaded rod W76 M10 L=3M AISI316
725083	Joint nut M8 Electro-galv.
724806	Joint nut M10 Electro-galv.
CSU794699	Distance nut M8 HDG
724807	Joint nut M10 AISI316L
CSU795600	Cable clamp ARX1-12 Z+
CSU795601	Cable clamp ARX1-16 Z+
CSU795602	Cable clamp ARX1-22 Z+
CSU795603	Cable clamp ARX1-28 Z+
CSU795604	Cable clamp ARX1-36 Z+
CSU795605	Cable clamp ARX1-44 Z+
CSU795606	Cable clamp ARX1-52 Z+
CSU795607	Cable clamp ARX1-60 Z+
CSU795608	Cable clamp ARX1-70 Z+
CSU795609	Cable clamp ARX2-12 Z+
CSU795610	Cable clamp ARX2-16 Z+
CSU795611	Cable clamp ARX-22 Z+
CSU795612	Cable clamp ARX2-26 Z+
CSU795613	Cable clamp ARX2-36 Z+
CSU795614	Cable clamp ARX2-44 Z+
CSU795615	Cable clamp ARX2-52 Z+
CSU795616	Cable clamp ARX2-60 Z+
709050	Insert piece EM-12
709051	Insert piece EM-16
709052	Insert piece EM-22
709053	Insert piece EM-28
709054	Insert piece EM-36

OWNER
WIBE GROUP
Wibevägen 1,
792 36 Mora, Sweden

MANUFACTURER
WIBE AB
Wibevägen 1,
792 36 Mora, Sweden

No: GEX6132300
WG_DOC_20210013_V3.0
Wibe-group.com



709055	Insert piece EM-44
709056	Insert piece EM-52
709057	Insert piece EM-60
709058	Insert piece EM-70
736440	Cable clamp ER 23-28 AISI316
736441	Cable clamp ER 27-32 AISI316
736442	Cable clamp ER 30-35 AISI316
736443	Cable clamp ER 33-38 AISI316
736444	Cable clamp ER 36-42 AISI316
736445	Cable clamp ER 40-46 AISI316
736446	Cable clamp ER 44-50 AISI316
736447	Cable clamp ER 48-55 AISI316
736448	Cable clamp ER 51-58 AISI316
736449	Cable clamp ER 55-62 AISI316
736450	Cable clamp ER 59-66 AISI316
736451	Cable clamp ER 63-70 AISI316
736452	Cable clamp ER 67-74 AISI316
736453	Cable clamp ER 71-78 AISI316
736454	Cable clamp ER 74-82 AISI316
736455	Cable clamp ER 77-85 AISI316
736456	Oval rung adaptor AISI316
737198	Screw set 74S AISI316
728642	Hook 8 Hdg
725363	Profile clamp 41 Pre-galv.
720824	Clamp 41 Hdg
721945	Clamp 41 Hdg White
783374	Clamp 41 AISI316L
CSU795240	Profile clamp 42 Pre-galv.
CSU795360	Profile clamp 42 Pre-galv. White
CSU795239	Profile clamp 42 Pre-galv. Fire
CSU795242	Profile clamp 42 Hdg
CSU795243	Profile clamp 42 Hdg White
CSU795241	Profile clamp 42 ZM
725763	Profile clamp 42 AISI316
768733	Angle plate 33/1 Pre-galv.
714030	Angle plate 33/1 Pre-galv. White
727340	Angle plate 33/1 AISI316

OWNER
WIBE GROUP
Wibevägen 1,
792 36 Mora, Sweden

MANUFACTURER
WIBE AB
Wibevägen 1,
792 36 Mora, Sweden

No: GEX6132300
WG_DOC_20210013_V3.0
Wibe-group.com



721114	Angle plate 33/2 Pre-galv.
707748	Angle plate 33/2 Hdg
714168	Angle plate 33/2 Hdg White
727197	Angle plate 33/2 AISI316
CSU795889	Corner inner radius max 600 Z+
CSU795890	Corner inner radius max 1000 Z+
CSU795891	Profile protection plate 400 Z+
CSU795892	Profile protection plate 500 Z+
CSU795893	Profile protection plate 600 Z+
721122	Coupling 22 Pre-galv.
CSU795289	Coupling 22 Pre-galv. White
718409	Coupling 22 Hdg
71840	Coupling 22 Hdg White
725760	Coupling 22 AISI316
709017	Fixed take-off hook 4 Al
714067	Fixed take-off hook 4 Al White
723212	Branch coupling 14 Pre-galv.
725096	Junction coupling 14 Hdg
790906	Branch coupling 14 Hdg White
727195	Branch coupling 14 AISI316
732214	Cover W5-70 2m Pre-galv.
732215	Cover W5-100 2m Pre-galv.
732216	Cover W5-150 2m Pre-galv.
732217	Cover W5-200 2m Pre-galv.
732218	Cover W5-300 2m Pre-galv.
732219	Cover W5-400 2m Pre-galv.
732220	Cover W5-500 2m Pre-galv.
732221	Cover W5-600 2m Pre-galv.
732222	Cover W5-1000 2m Pre-galv.
729015	Cover W5-70 2m Pre-galv. White
729016	Cover W5-150 2m Pre-galv. White
734134	Cover W5-100 2m Pre-galv. White
729017	Cover W5-200 2m Pre-galv. White
729018	Cover W5-300 2m Pre-galv. White
729019	Cover W5-400 2m Pre-galv. White
729020	Cover W5-500 2m Pre-galv. White
729021	Cover W5-600 2m Pre-galv. White

OWNER
WIBE GROUP
Wibevägen 1,
792 36 Mora, Sweden

MANUFACTURER
WIBE AB
Wibevägen 1,
792 36 Mora, Sweden

No: GEX6132300
WG_DOC_20210013_V3.0
Wibe-group.com



729022	Cover W5-1000 2m Pre-galv. White
732262	Cover W5-70 2m Hdg
732263	Cover W5-100 2m Hdg
732264	Cover W5-150 2m Hdg
732265	Cover W5-200 2m Hdg
732266	Cover W5-300 2m Hdg
732267	Cover W5-400 2m Hdg
732268	Cover W5-500 2m Hdg
732269	Cover W5-600 2m Hdg
782213	Cover W5-800 2m Hdg
732270	Cover W5-1000 2m Hdg
782365	Cover W5-150 2m Zinkpox white
782366	Cover W5-200 2m Zinkpox white
782367	Cover W5-300 2m Zinkpox white
782368	Cover W5-400 2m Zinkpox white
782369	Cover W5-500 2m Zinkpox white
782370	Cover W5-600 2m Zinkpox white
782214	Cover W5-800 2m Zinkpox white
782371	Cover W5-1000 2m Zinkpox white
732291	Cover W5-150 2m AISI316
732292	Cover W5-200 2m AISI316
732293	Cover W5-300 2m AISI316
732294	Cover W5-400 2m AISI316
732295	Cover W5-500 2m AISI316
732296	Cover W5-600 2m AISI316
783375	Cover W5-800 2m AISI316
732297	Cover W5-1000 2m AISI316
732322	Cover-150 90-bend Pre-galv
732323	Cover-200 90-bend Pre-galv
732324	Cover-300 90-bend Pre-galv
732325	Cover-400 90-bend Pre-galv
732326	Cover-500 90-bend Pre-galv
732327	Cover-600 90-bend Pre-galv
781802	Cover-800 90-bend Pre-galv
732328	Cover-1000 90-bend Pre-galv
781804	Cover 90°bend 15-150 Pre-galv. White
781805	Cover 90°bend 15-200 Pre-galv. White

OWNER
WIBE GROUP
Wibevägen 1,
792 36 Mora, Sweden

MANUFACTURER
WIBE AB
Wibevägen 1,
792 36 Mora, Sweden

No: GEX6132300
WG_DOC_20210013_V3.0
Wibe-group.com



781806	Cover 90°bend 15-300 Pre-galv. White
781807	Cover 90°bend 15-400 Pre-galv. White
781808	Cover 90°bend 15-500 Pre-galv. White
781809	Cover 90°bend 15-600 Pre-galv. White
781810	Cover 90°bend 15-800 Pre-galv. White
781811	Cover 90°bend 15-1000 Pre-galv. White
781433	Cover 90°bend 15-150 Hdg
781434	Cover 90°bend 15-200 Hdg
781435	Cover 90°bend 15-300 Hdg
781436	Cover 90°bend 15-400 Hdg
781437	Cover 90°bend 15-500 Hdg
781438	Cover 90°bend 15-600 Hdg
781793	Cover 90°bend 15-800 Hdg
781439	Cover 90°bend 15-1000 Hdg
781751	Cover 90°bend 15/150 HDG/white
781752	Cover 90°bend 15/200 HDG/white
781753	Cover 90°bend 15/300 HDG/white
781754	Cover 90°bend 15/400 HDG/white
781755	Cover 90°bend 15/500 HDG/white
781756	Cover 90°bend 15/600 HDG/white
781794	Cover 90°bend 15/800 HDG/white
781757	Cover 90°bend 15/1000 HDG/white
788639	Cover 90°bend 15-150 AISI316
788640	Cover 90°bend 15-200 AISI316
788641	Cover 90°bend 15-300 AISI316
788642	Cover 90°bend 15-400 AISI316
788643	Cover 90°bend 15-500 AISI316
788644	Cover 90°bend 15-600 AISI316
788645	Cover 90°bend 15-800 AISI316
788646	Cover 90°bend 15-1000 AISI316
CSU795598	Cover clamp Zinc+
CSU795599	Cover clamp Zinc+ White
728586	Cover clamp AISI316
782545	Cover joint 100 Pre-galv.
712639	Cover joint 150 Pre-galv.
712640	Cover joint 200 Pre-galv.
712642	Cover joint 300 Pre-galv.

OWNER
WIBE GROUP
Wibevägen 1,
792 36 Mora, Sweden

MANUFACTURER
WIBE AB
Wibevägen 1,
792 36 Mora, Sweden

No: GEX6132300
WG_DOC_20210013_V3.0
Wibe-group.com

10/25



712643	Cover joint 400 Pre-galv.
712644	Cover joint 500 Pre-galv.
712645	Cover joint 600 Pre-galv.
780452	Cover joint 150 Hdg
780453	Cover joint 200 Hdg
780454	Cover joint 300 Hdg
780455	Cover joint 400 Hdg
780456	Cover joint 500 Hdg
780457	Cover joint 600 Hdg
732345	Cover-150 T-junct. Pre-galv.
732346	Cover-200 T-junct. Pre-galv.
732347	Cover-300 T-junct. Pre-galv.
732348	Cover-400 T-junct. Pre-galv.
732349	Cover-500 T-junct. Pre-galv.
732350	Cover-600 T-junct. Pre-galv.
781803	Cover-800 T-junct. Pre-galv.
732351	Cover-1000 T-junct. Pre-galv.
781440	Cover T-junction 16-150 Hdg
781441	Cover T-junction 16-200 Hdg
781442	Cover T-junction 16-300 Hdg
781443	Cover T-junction 16-400 Hdg
781444	Cover T-junction 16-500 Hdg
781445	Cover T-junction 16-600 Hdg
781796	Cover T-junction 16-800 Hdg
781446	Cover T-junction 16-1000 Hdg
781765	Cover T-junction 150 HDG/white
781766	Cover T-junction 200 HDG/white
781767	Cover T-junction 300 HDG/white
781768	Cover T-junction 400 HDG/white
781769	Cover T-junction 500 HDG/white
781770	Cover T-junction 600 HDG/white
781797	Cover T-junction 800 HDG/white
781771	Cover T-junction 1000 HDG/white
788647	Cover T-Junction 16/150 AISI316L
788648	Cover T-Junction 16/200 AISI316L
788649	Cover T-Junction 16/300 AISI316L
788650	Cover T-Junction 16/400 AISI316L

OWNER
WIBE GROUP
Wibevägen 1,
792 36 Mora, Sweden

MANUFACTURER
WIBE AB
Wibevägen 1,
792 36 Mora, Sweden

No: GEX6132300
WG_DOC_20210013_V3.0
Wibe-group.com



788651	Cover T-Junction 16/500 AISI316L
788652	Cover T-Junction 16/600 AISI316L
788653	Cover T-Junction 16/800 AISI316L
788654	Cover T-Junction 16/1000 AISI316L
729217	Profile support piece 37 Pre-galv.
730189	Profile support piece 37 Pre-galv. White
730188	Profile support piece 37 Hdg
782382	Profile support piece 37 Hdg White
730190	Profile support piece 37 AISI316L
791337	Cover 69-200 Bottom part EOC 2022 09
791338	Cover 69-300 Bottom part EOC 2022
791339	Cover 69-400 Bottom part EOC 2022
791340	Cover 69-500 Bottom part EOC 2022
791341	Cover 69-600 Bottom part EOC 2022
791342	Cover 69-200 Top part EOC 2022 09
791343	Cover 69-300 Top part EOC 2022
791344	Cover 69-400 Top part EOC 2022
791345	Cover 69-500 Top part EOC 2022
791346	Cover 69-600 Top part EOC 2022
782561	Cover 64-150 2m Hdg
782562	Cover 64-200 2m Hdg
782563	Cover 64-300 2m Hdg
782564	Cover 64-400 2m Hdg
782565	Cover 64-500 2m Hdg
782566	Cover 64-600 2m Hdg
782567	Cover 64-800 2m Hdg
782568	Cover 64-1000 2m Hdg
782569	Cover 64-150 Hdg White
782570	Cover 64-200 Hdg White
782571	Cover 64-300 Hdg White
782572	Cover 64-400 Hdg White
782573	Cover 64-500 Hdg White
782574	Cover 64-600 Hdg White
782575	Cover 64-800 Hdg White
782576	Cover 64-1000 Hdg White
782585	Cover 64-150 AISI316L

OWNER
WIBE GROUP
Wibevägen 1,
792 36 Mora, Sweden

MANUFACTURER
WIBE AB
Wibevägen 1,
792 36 Mora, Sweden

No: GEX6132300
WG_DOC_20210013_V3.0
Wibe-group.com

12/25



782586	Cover 64-200 AISI316L
782587	Cover 64-300 AISI316L
782588	Cover 64-400 AISI316L
782589	Cover 64-500 AISI316L
782590	Cover 64-600 AISI316L
782591	Cover 64-800 AISI316L
782592	Cover 64-1000 AISI316L
732475	Protecting plate 65-200 Pre-galv.
732476	Protecting plate 65-300 Pre-galv.
732477	Protecting plate 65-400 Pre-galv.
732478	Protecting plate 65-500 Pre-galv.
732479	Protecting plate 65-600 Pre-galv.
730192	Protecting plate 65-200 Hdg
730193	Protecting plate 65-300 Hdg
730194	Protecting plate 65-400 Hdg
730195	Protecting plate 65-500 Hdg
730196	Protecting plate 65-600 Hdg
732481	Protecting plate 65/200 AISI316
732482	Protecting plate 65/300 AISI316
732483	Protecting plate 65/400 AISI316
732484	Protecting plate 65/500 AISI316
732485	Protecting plate 65/600 AISI316
718909	Protecting plate 65-200 White
718911	Protecting plate 65-400 White
718913	Protecting plate 65-600 White
786738	Protecting cover 300 Pre-galv.
786739	Protecting cover 400 Pre-galv.
786746	Protecting cover 300 Hdg
786747	Protecting cover 400 Hdg
782299	Insert piece W39 Pre-galv.
716824	Insert piece W39 Plastic Grey
718835	Divid.strip 39/24 1.75m Pre-galv.
731747	Dividing strip 39/24 1.75m Hdg
717950	Divid. strip 39/24 1.75m White
725593	Div.strip 39/24 1,75m AISI316
725785	Divid.strip 39/55 1.75m Pre-galv.
732983	Dividing strip 39/55 1.75m Hdg

OWNER
WIBE GROUP
Wibevägen 1,
792 36 Mora, Sweden

MANUFACTURER
WIBE AB
Wibevägen 1,
792 36 Mora, Sweden

No: GEX6132300
WG_DOC_20210013_V3.0
Wibe-group.com



725786	Divid. strip 39/55 1.75m White
725594	Div.strip 39/55 1,75m AISI316
CSU795932	DIVIDING STRIP 39/24 Z+
CSU795933	DIVIDING STRIP 39/55 Z+
IMT38005	TEX-C2 M6x40 Through bolt EZ
IMT38006	TEX-C2 M6x70 Through bolt EZ
IMT38007	TEX-C2 M8x50 Through bolt EZ
IMT38008	TEX-C2 M8x95 Through bolt EZ
IMT38009	TEX-C2 M10x60 Through bolt EZ
IMT38010	TEX-C2 M10x105 Through bolt EZ
IMT38011	TEX-C2 M12x85 Through bolt EZ
IMT38012	TEX-C2 M12x125 Through bolt EZ
IMT38013	TEX-C3 M6x40 Through bolt HDG
IMT38014	TEX-C3 M6x70 Through bolt HDG
IMT38015	TEX-C3 M8x50 Through bolt HDG
IMT38016	TEX-C3 M8x95 Through bolt HDG
IMT38017	TEX-C3 M10x60 Through bolt HDG
IMT38018	TEX-C3 M10x105 Through bolt HDG
IMT38019	TEX-C3 M12x85 Through bolt HDG
IMT38020	TEX-C3 M12x125 Through bolt HDG
IMT38021	TEX-C5M M6x40 Through bolt
IMT38022	TEX-C5M M6x70 Through bolt
IMT38023	TEX-C5M M8x50 Through bolt
IMT38024	TEX-C5M M8x95 Through bolt
IMT38025	TEX-C5M M10x60 Through bolt
IMT38026	TEX-C5M M10x105 Through bolt
IMT38040	MMS-PAN 5x30 Concrete screw EZ
IMT38041	MMS-P 5x50 Concrete screw EZ
IMT38033	MMS-PAN 6x30 Concrete screw EZ
IMT38034	MMS-PAN 7,5x45 Concrete screw EZ
IMT38037	MMS-PAN SH 7,5x45 Concrete screw EZ
IMT38027	MMS-S 7,5x35 Concrete screw EZ
IMT38030	MMS-S 10x60 Concrete screw EZ
IMT38042	MMS-S 6x40 Concrete screw EZ
IMT38038	MMS-S 6x50 Concrete screw EZ
IMT38039	MMS-S 6x60 Concrete screw EZ
IMT38028	MMS-S 7,5x40 Concrete screw FXB

OWNER
WIBE GROUP
Wibevägen 1,
792 36 Mora, Sweden

MANUFACTURER
WIBE AB
Wibevägen 1,
792 36 Mora, Sweden

No: GEX6132300
WG_DOC_20210013_V3.0
Wibe-group.com

14/25



IMT38029	MMS-S 7,5x50 Concrete screw EZ
IMT38043	MMS-S 10x60 Concrete screw HDG
IMT38031	MMS-S 7,5x50/65 Concrete screw SS316L
IMT38032	MMS-S 10x70/85 Concrete screw SS316L
IMT38047	MMS-S MF 6x40 Concrete screw EZ
IMT38048	MMS-S MF 6x50 Concrete screw EZ
IMT38049	MMS-S MF 6x60 Concrete screw EZ
IMT38050	MMS-S MF 7,5x50 Concrete screw EZ
IMT38051	MMS-S MF 7,5x70 Concrete screw EZ
IMT38044	MMS-S MF 6x40 Concrete screw HDG
IMT38045	MMS-S MF 6x60 Concrete screw HDG
IMT38046	MMS-S MF 7,5x50 Concrete screw HDG
IMT38035	MMS-I 7,5x60 Concrete screw EZ
IMT38036	MMS-R 6x40 Ögleskruv EZ
IMT38052	Mounting tool for eye screw MMS-R
IMT38053	Magnetic socket driver 10x45
IMT38054	Magnetic socket driver 13x55
IMT38055	Screw bit T30 TX 30x25
732486	Box plate 61-200 Pre-galv.
732487	Box plate 61-300 Pre-galv.
732488	Box plate 61-400 Pre-galv.
732489	Box plate 61-500 Pre-galv.
732490	Box plate 61-600 Pre-galv.
732491	Box plate 61-200 Hdg
732492	Box plate 61-300 Hdg
732493	Box plate 61-400 Hdg
732494	Box plate 61-500 Hdg
732495	Box plate 61-600 Hdg
734713	Dropper joint 32 Hdg
780874	Dropper joint 32 Hdg White
791199	Joint 21 Hdg
791200	Joint 21 Hdg White
CSU795051	Joint 21 ZM
725751	Joint 21 AISI316
CSU795050	Joint 21 click-fix ZM
CSU795290	Joint 21 click-fix ZM White
721115	Joint 9 Pre-galv.

OWNER
WIBE GROUP
Wibevägen 1,
792 36 Mora, Sweden

MANUFACTURER
WIBE AB
Wibevägen 1,
792 36 Mora, Sweden

No: GEX6132300
WG_DOC_20210013_V3.0
Wibe-group.com

15/25



705304	Joint 9 Hdg
714066	Joint 9 Hdg White
721119	Pendant joint 2J Pre-galv.
713177	Pendant joint 2J Hdg
716303	Pendant joint 2J Hdg White
726484	Pendant joint 2J AISI316
CSU795325	Pendant joint 2FJ Pre-galv.
713178	Pendant joint 2FJ Hdg
716304	Pendant joint 2FJ Hdg White
CSU795556	Pendant joint 2FJ AISI316
726485	Pendant joint 2FJ AISI316L
713173	Pendant joint 20J Hdg
716302	Pendant joint 20J Hdg White
734171	Reducer 31-100 Hdg
734172	Reducer 31-200 Hdg
734173	Reducer 31-300 Hdg
734174	Reducer 31-400 Hdg
735433	Reducer 31-100 Hdg White
735434	Reducer 31-200 Hdg White
735435	Reducer 31-300 Hdg White
735436	Reducer 31-400 Hdg White
788638	S-bend 67 Hdg
716640	Earth terminal W79 Zinc-plated
718618	Junction box plate 35P Pre-galv.
714510	Junct.box plate 35P Pre-galv. White
731745	Junction box plate 35P Hdg
CSU795559	Junction box plate 35P AISI316
725777	Junction box plate 35P Unholed AISI316
711205	Junction box plate 35S Pre-galv.
716318	Junction box plate 35S Pre-galv. White
731746	Junction box plate 35S Hdg
725776	Junction box plate 35S AISI316
730245	Junction box plate 35S Pre-galv.
730246	Junction box plate 35S Pre-galv. White
734225	Socket 2-way encl+Junc.b.pl35S
734226	Socket 2-way unencl+Junc.b.pl35S
731962	Junct.box IP65MP+Junc.b.pl. 35S

OWNER
WIBE GROUP
Wibevägen 1,
792 36 Mora, Sweden

MANUFACTURER
WIBE AB
Wibevägen 1,
792 36 Mora, Sweden

No: GEX6132300
WG_DOC_20210013_V3.0
Wibe-group.com



731961	Junct.box IP65UP+Junc.b.pl.35S
CSU795862	Junction box plate 35S HDG + Junction box U56 MP
CSU795863	Junction box plate 35S HDG + Junction box U56 UP
CSU795864	Junction box plate 35S Pre-galv + Junction box AP9
CSU795865	Junction box plate 35S HDG + Junction box AP9
CSU795866	Junction box plate 35S HDG + Outlet 2-way IP44
CSU795867	Junction box plate W24/40 HDG + Junction box U56 UP
CSU795868	Junction box plate W24/40 Pre-galv + Junction box AP9
CSU795869	Junction box plate W24/40 HDG + Junction box AP9
CSU795870	Junction box plate W24/40 Pre-galv + Outlet 2-way IP44
CSU795871	Junction box plate W24/40 HDG + Outlet 2-way IP44
783460	Box Plate 62-100 Pre-galv.
783461	Box Plate 62-200 Pre-galv.
713686	HTR-2303 Lashing wire, stainless steel
713687	HTR-2313 Lashing wire, stainless steel
713684	HTR-2304 Lashing wire, PVC
713685	HTR-2314 Lashing wire, PVC
CSU795353	Junction box plate 12xRJ45
737704	Marking plate 93 Yellow
737705	Marking plate 93 Orange
737706	Marking plate 93 Blue
737707	Marking plate 93 Green
737708	Marking plate 93 Black
CSU795597	Mounting rail WMS 25L Zinc+
717637	Anti-corrosive paint Galvafröid
739713	Repair paint spray White
768063	Fixing rail for casting-in 24/26x53 4m Hdg

OWNER
WIBE GROUP
Wibevägen 1,
792 36 Mora, Sweden

MANUFACTURER
WIBE AB
Wibevägen 1,
792 36 Mora, Sweden

No: GEX6132300
WG_DOC_20210013_V3.0
Wibe-group.com

17/25



709795	Pendant/Fixing rail 24/20 3m Hdg
716307	Pendant/Fixing rail 24/20 3m Hdg White
738162	Pendant/Fixing rail 24/20 3m AISI316
709798	Pendant/fix.rail 24/20F 3m Hdg
718808	Pendant/fix.rail 24/20F 6m Hdg
716308	Pendant/fix.rail 24/20F 3m White
720525	Pendant/fix.rail 24/20F 6m White
738164	Pendant/fix.rail 24/20F 6m AISI316L
709031	Pend./fix.rail 24/20FS 6m Hdg
720526	Pend./fix.rail 24/20FS 6m White
725357	Pendant/Fixing rail 24/34 0.3m Pre-galv.
725358	Pendant/Fixing rail 24/34 0.4m Pre-galv.
725359	Pendant/Fixing rail 24/34 0.5m Pre-galv.
725360	Pendant/Fixing rail 24/34 0.6m Pre-galv.
725361	Pendant/Fixing rail 24/34 1m Pre-galv.
721102	Pendant/Fixing rail 24/34 3m Pre-galv.
715879	Pendant/Fixing rail 24/34 3m Hdg
716309	Pendant/Fixing rail 24/34 3m White
725574	P/F rail 24/34 0.3m AISI316
725575	P/F rail 24/34 0.4m AISI316
725576	P/F rail 24/34 0.5m AISI316
725577	P/F rail 24/34 0.6m AISI316
725578	P/F rail 24/34 1m AISI316
725579	P/F rail 24/34 3m AISI316
CSU795564	Pendant/fix.rail 24/48 1m Pre-galv.
731717	Pendant/fix.rail 24/48 3m Pre-galv.
731721	Pendant/fix.rail 24/48 6m Pre-galv.
CSU795567	Pendant/fix.rail 24/48 1m Pre-galv White.
CSU795292	Pendant/fix.rail 24/48 3m Pre-galv White.
CSU795565	Pendant rail 24/48 1m HDG
705093	Pendant rail 24/48 3m HDG
731719	Pendant rail 24/48 6m HDG
CSU795568	Pendant rail 24/48 1m White
716306	Pendant rail 24/48 3m White
731724	Pendant rail 24/48 6m White
CSU795566	Pendant rail 24/48 1m AISI316
728595	Pendant rail 24/48 3m AISI316

OWNER
WIBE GROUP
Wibevägen 1,
792 36 Mora, Sweden

MANUFACTURER
WIBE AB
Wibevägen 1,
792 36 Mora, Sweden

No: GEX6132300
WG_DOC_20210013_V3.0
Wibe-group.com



731727	Pendant rail 24/48 6m AISI316
720786	Clamp M6-25 AISI316
725587	Clamp M6-20 AISI316
CSU795475	U-bolt set M8 Ø32 HDG
CSU795515	U-bolt set M8 Ø32 AISI316
CSU795523	U-bolt set M8 Ø20-25 HDG
792863	Round bar fix. for ceilings Hdg
792864	Round bar fix. for ceilings AISI316
792865	Round bar fix. for floors Hdg
792866	Round bar fix. for floors AISI316
792867	Fixing for walls Hdg
792868	Fixing for walls AISI316
718632	Back nut M8 Hdg
728649	Screw M10X20 AISI316
715735	Screw set 2S Hdg
715736	Screw set 20S Hdg
713694	Screw set 22S HDG
725582	Screw set 22S AISI316
CSU795277	Screw set 25S HDG
CSU795587	Screw set 25S AISI316
716407	Spring nut M8 Hdg
728622	Spring nut M10 AISI316
718473	Screw set W34 Electro-galv.
734646	Screw set W34 HDG
725589	Screw set W34 AISI316
716799	Screw set W37 Electro-galv.
725586	Screw set W37 AISI 316
CSU795596	T-bolt 26U M8x30 AISI316
CSU795729	T-bolt 26U VP M8x30 AISI316
CSU795592	T-bolt 26U M10x30 AISI316
CSU795593	T-bolt 26U M10x50 AISI316
CSU795595	T-bolt 26U M8x30 HDG
CSU795589	T-bolt 26U M10x30 HDG
CSU795590	T-bolt 26U M10x40 HDG
CSU795591	T-bolt 26U M10x50 HDG
CSU795594	T-bolt 26U M8x30 Bright zinc OEC 2022 03
CSU795588	T-bolt 26U M10x30 Bright zinc OEC 2022 03

OWNER
WIBE GROUP
Wibevägen 1,
792 36 Mora, Sweden

MANUFACTURER
WIBE AB
Wibevägen 1,
792 36 Mora, Sweden

No: GEX6132300
WG_DOC_20210013_V3.0
Wibe-group.com

19/25



717636	Beam attachment HT-152 Hdg
713672	Carrying bracket HT-31 Hdg
713674	Carrying bracket HT-33 Pre-galv.
713675	Carrying bracket HT-34 Pre-galv.
713676	Carrying sling HT-51 Pre-galv.
713677	Pipe HT-68 Hdg
713678	Pipe HT-68 AISI316
713679	HT-2309 Steel wire galvanized, soft
713688	HT-2311 Steel wire 7xdiam 1,71= 16 mm ² coated, grey
713681	HTR-2322 Steel wire Stainless, hard
713682	HTR-2323 Steel wire Stainless, hard
713683	HTR-2324 Steel wire Stainless, hard
713689	Tightening loop HT-611 Hdg
713690	Tightening loop HT-621 Hdg
713691	Tightening loop HT-631 Hdg
713671	Wall bracket HT-14 Hdg
721869	Support bracket 3-200 Pre-galv.
721870	Support bracket 3-300 Pre-galv.
721871	Support bracket 3-400 Pre-galv.
721872	Support bracket 3-500 Pre-galv.
721873	Support bracket 3-600 Pre-galv.
720761	Support bracket 3-150 Hdg
720762	Support bracket 3-200 Hdg
720763	Support bracket 3-300 Hdg
720764	Support bracket 3-400 Hdg
720765	Support bracket 3-500 Hdg
720766	Support bracket 3-600 Hdg
721862	Support bracket 3-150 Hdg White
721863	Support bracket 3-200 Hdg White
721864	Support bracket 3-300 Hdg White
721865	Support bracket 3-400 Hdg White
721866	Support bracket 3-500 Hdg White
721867	Support bracket 3-600 Hdg White
726433	Support bracket 3-150 AISI316L
726434	Support bracket 3-200 AISI316L
726435	Support bracket 3-300 AISI316L

OWNER
WIBE GROUP
Wibevägen 1,
792 36 Mora, Sweden

MANUFACTURER
WIBE AB
Wibevägen 1,
792 36 Mora, Sweden

No: GEX6132300
WG_DOC_20210013_V3.0
Wibe-group.com

20/25



726436	Support bracket 3-400 AISI316L
726437	Support bracket 3-500 AISI316L
726438	Support bracket 3-600 AISI316L
791063	Support bracket HSO-150 M10 Hdg
791064	Support bracket HSO-200 M10 Hdg
791065	Support bracket HSO-300 M10 Hdg
791066	Support bracket HSO-400 M10 Hdg
791067	Support bracket HSO-500 M10 Hdg
791068	Support bracket HSO-600 M10 Hdg
791092	Washer HSO M16 Hdg
725065	Tele-conduit 36/50 2m Pre-galv.
725066	Tele-conduit 36/100 2m Pre-galv.
725067	Tele-conduit 36/200 2m Pre-galv.
725068	Tele-conduit 36-50 2m Pre-galv. White
725069	Tele-conduit 36-100 2m Pre-galv. White
725070	Tele-conduit 36-200 2m Pre-galv. White
731748	Tele-conduit 36-50 2m Hdg
731749	Tele-conduit 36-100 2m Hdg
731750	Tele-conduit 36-200 2m Hdg
725590	Tele-conduit 36/50 2m AISI316
725591	Tele-conduit 36/100 2m AISI316
725592	Tele-conduit 36/200 2m AISI316
CSU795934	Tele-conduit 36/50 2m Z+
CSU795935	Tele-conduit 36/100 2m Z+
CSU795936	Tele-conduit 36/200 2m Z+
CSU795572	Vertical piece 2-300 EZ
CSU795573	Vertical piece 2-500 EZ
CSU795574	Vertical piece 2-1000 EZ
717191	Vertical piece 2-300 Hdg
717192	Vertical piece 2-400 Hdg
717193	Vertical piece 2-500 Hdg
717194	Vertical piece 2-700 Hdg
717195	Vertical piece 2-1000 Hdg
716283	Vertical piece 2-300 Hdg White
716284	Vertical piece 2-400 Hdg White
716285	Vertical piece 2-500 Hdg White
716286	Vertical piece 2-700 Hdg White

OWNER
WIBE GROUP
Wibevägen 1,
792 36 Mora, Sweden

MANUFACTURER
WIBE AB
Wibevägen 1,
792 36 Mora, Sweden

No: GEX6132300
WG_DOC_20210013_V3.0
Wibe-group.com



716287	Vertical piece 2-1000 Hdg White
725557	Vertical piece 2-300 AISI316
725558	Vertical piece 2-400 AISI316
725559	Vertical piece 2-500 AISI316
725560	Vertical piece 2-700 AISI316
725561	Vertical piece 2-1000 AISI316
CSU795329	Vertical piece 2F 280 EZ
CSU795330	Vertical piece 2F 505 EZ
CSU795331	Vertical piece 2F 1000 EZ
717196	VERTICAL PIECE 2F/280 HDG
717197	VERTICAL PIECE 2F/370 HDG
717198	VERTICAL PIECE 2F/505 HDG
CSU794202	VERTICAL PIECE 2F/640 HDG
717199	VERTICAL PIECE 2F/730 HDG
CSU794203	VERTICAL PIECE 2F/865 HDG
717200	VERTICAL PIECE 2F/1000 HDG
787276	VERTICAL PIECE 2F/1500 HDG
717201	Vertical piece 2F-280 Hdg White
717202	Vertical piece 2F-370 Hdg White
717203	Vertical piece 2F-505 Hdg White
717204	Vertical piece 2F-730 Hdg White
717205	Vertical piece 2F-1000 Hdg White
787277	Vertical piece 2F-1500 Hdg White
725562	Vertical piece 2F-280 AISI316
725563	Vertical piece 2F-370 AISI316
725564	Vertical piece 2F-505 AISI316
725565	Vertical piece 2F-730 AISI316
725566	Vertical piece 2F-1000 AISI316
787278	Vertical piece 2F-1500 AISI316
792723	Vertical piece 2Fi-300 Pre-galv.
792724	Vertical piece 2Fi-500 Pre-galv.
792725	Vertical piece 2Fi-750 Pre-galv.
792726	Vertical piece 2Fi-1000 Pre-galv.
CSU795299	Vertical piece 2Fi-1000 pre-galv. White
CSU795300	Vertical piece 2Fi-300 Pre-galv. White
CSU795301	Vertical piece 2Fi-400 pre-galv. White
CSU795302	Vertical piece 2Fi-500 Pre-galv. White

OWNER
WIBE GROUP
Wibevägen 1,
792 36 Mora, Sweden

MANUFACTURER
WIBE AB
Wibevägen 1,
792 36 Mora, Sweden

No: GEX6132300
WG_DOC_20210013_V3.0
Wibe-group.com

22/25



CSU795303	Vertical piece 2Fi-600 pre-galv. White
CSU795304	Vertical piece 2Fi-750 Pre-galv. White
788655	Vertical piece 2FPK/300 HDG
788656	Vertical piece 2FPK/500 HDG
788657	Vertical piece 2FPK/750 HDG
788658	Vertical piece 2FPK/1000 HDG
788660	Vertical piece 2FPK-300 HDG WHITE
788661	Vertical piece 2FPK 500 HDG WHITE
788663	Vertical piece 2FPK/1000 HDG WHITE
CSU795332	Vertical piece 2FB 280 EZ
CSU795333	Vertical piece 2FB 505 EZ
CSU795334	Vertical piece 2FB 1000 EZ
CSU795335	Vertical piece 2FB 280 HDG
CSU795336	Vertical piece 2FB 505 HDG
CSU795337	Vertical piece 2FB 1000 HDG
CSU795338	Vertical piece 2FB 280 AISI316
CSU795339	Vertical piece 2FB 505 AISI316
CSU795340	Vertical piece 2FB 1000 AISI316
CSU794204	Vertical piece 20-280 Hdg
CSU794205	Vertical piece 20-370 Hdg
715723	Vertical piece 20-500 Hdg
CSU794206	Vertical piece 20-640 Hdg
715724	Vertical piece 20-700 Hdg
CSU794207	Vertical piece 20-865 Hdg
715725	Vertical piece 20-1000Hdg
715726	Vertical piece 20-1500 Hdg
715727	Vertical piece 20-2000 Hdg
715728	Vertical piece 20-3000 Hdg
716276	Vertical piece 20-500 Hdg White
716277	Vertical piece 20-700 Hdg White
716278	Vertical piece 20-1000 Hdg White
716279	Vertical piece 20-1500 Hdg White
716280	Vertical piece 20-2000 Hdg White
716281	Vertical piece 20-3000 Hdg White
725567	Vertical piece 20-500 AISI316
725568	Vertical piece 20-700 AISI316
725569	Vertical piece 20-1000 AISI316

OWNER
WIBE GROUP
Wibevägen 1,
792 36 Mora, Sweden

MANUFACTURER
WIBE AB
Wibevägen 1,
792 36 Mora, Sweden

No: GEX6132300
WG_DOC_20210013_V3.0
Wibe-group.com

23/25



725570	Vertical piece 20-1500 AISI316
725571	Vertical piece 20-2000 AISI316
725572	Vertical piece 20-3000 AISI316
718249	Vertical piece 20F-1000 Hdg
718250	Vertical piece 20F-1500 Hdg
718251	Vertical piece 20F-2000 Hdg
709799	Vertical piece 20F-3000 Hdg
718484	Vertical piece 20F-1000 Hdg White
718485	Vertical piece 20F-1500 Hdg White
718486	Vertical piece 20F-2000 Hdg White
716282	Vertical piece 20F-3000 Hdg White
718718	Vertical piece 20FS-1500 Hdg
718719	Vertical piece 20FS-2000 Hdg
718720	Vertical piece 20FS-2500 Hdg
718721	Vertical piece 20FS-3000 Hdg
720521	Vertical piece 20FS-1500 Hdg White
720522	Vertical piece 20FS-2000 Hdg White
720523	Vertical piece 20FS-2500 Hdg White
720524	Vertical piece 20FS-3000 Hdg White
CSU795894	Vertical piece BM20-505 HDG
CSU795895	Vertical piece BM20-1000 HDG
CSU795896	Vertical piece BM20-1500 HDG
CSU795897	Vertical piece BM20-2000 HDG
CSU795898	Vertical piece BM20-3000 HDG
CSU795899	Vertical piece BM20-4000 HDG
CSU795900	Vertical piece BM20-5000 HDG
CSU795901	Vertical piece BM20-6000 HDG
CSU795902	Vertical piece BM20F-1000 HDG
CSU795903	Vertical piece BM20F-1500 HDG
CSU795904	Vertical piece BM20F-2000 HDG
CSU795905	Vertical piece BM20F-3000 HDG
CSU795906	Vertical piece BM20F-4000 HDG
CSU795907	Vertical piece BM20F-5000 HDG
CSU795908	Vertical piece BM20F-6000 HDG
CSU795909	Vertical piece BM20FS-1000 HDG
CSU795910	Vertical piece BM20FS-1500 HDG
CSU795911	Vertical piece BM20FS-2000 HDG

OWNER
WIBE GROUP
Wibevägen 1,
792 36 Mora, Sweden

MANUFACTURER
WIBE AB
Wibevägen 1,
792 36 Mora, Sweden

No: GEX6132300
WG_DOC_20210013_V3.0
Wibe-group.com



CSU795912	Vertical piece BM20FS-3000 HDG
CSU795913	Vertical piece BM20FS-4000 HDG
CSU795914	Vertical piece BM20FS-5000 HDG
CSU795915	Vertical piece BM20FS-6000 HDG
CSU795916	Beam clamp 6BK-13 HDG
CSU795917	Beam clamp 6BK-20 HDG
CSU795918	Beam clamp 6BK-30 HDG
CSU795919	Beam clamp 6BK-40 HDG
CSU795920	Bolt-kits for Beam clamp 6BK-13 HDG
CSU795921	Bolt-kits for Beam clamp 6BK-20 HDG
CSU795922	Bolt-kits for Beam clamp 6BK-30 HDG
CSU795923	Bolt-kits for Beam clamp 6BK-40 HDG
CSU795924	Pendant Joint 20FS HDG
732151	Profile protection 28P
CSU795883	Wibeladder rung reinforcement - 400 Z+
CSU795884	Wibeladder rung reinforcement - 500 Z+
CSU795885	Wibeladder rung reinforcement - 600 Z+
CSU795886	Perforated rung reinforcement - 400 Z+
CSU795887	Perforated rung reinforcement - 500 Z+
CSU795888	Perforated rung reinforcement - 600 Z+
709019	End plug 28 red
735446	End plug 28i red
731994	End plug 28i white
789875	End plug 28 C
709020	End plug 28 D
709021	End plug 28 E
789876	End plug 28 F
CSU794520	End plug 28 J
726668	Cross member plug 27

OWNER
WIBE GROUP
Wibevägen 1,
792 36 Mora, Sweden

MANUFACTURER
WIBE AB
Wibevägen 1,
792 36 Mora, Sweden

No: GEX6132300
WG_DOC_20210013_V3.0
Wibe-group.com

25/25