



®

Dongguan Anci Electronic Technology Co., Ltd.


Add.: 1-2 Floor, Building A, No.11, Headquarters 2 Road, Songshan Lake  
Hi-tech Industrial Development Zone, Dongguan City, Guangdong Pr., China.

Tel: 86 -769 -8507 5888 Fax: 86 -769 -8507 5898 Web: www.anci.com

# ATTESTATION OF CONFORMITY

Attestation No.21AE040390E007

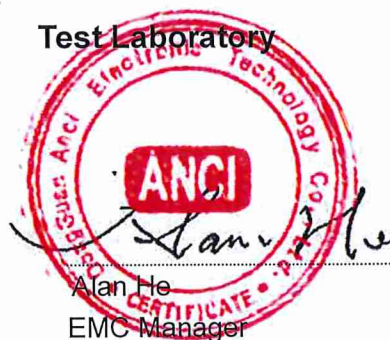
This Attestation of Conformity is hereby issued to the product designated below

**Report No.** : EA21040390E07001  
**Applicant** : Ledlenser Corporation Ltd.  
**Address** : No.25, Yudong 1 Road, Dongcheng Town, Yangdong District,  
Yangjiang City, GD, 529931, China  
**Manufacturer** : Huizhou Golden Lake Industrial Co., Ltd.  
**Address** : Dongjiang Industrial Estate, Shuikou Street, Huicheng District,  
Huizhou City, Guangdong Province, 516005, P.R.China  
**Trade Mark** :  **LEDLENSER**  
**Description of Product** : Powerbank Flex10  
**Model No.** : 502127  
**Input Rating** : 5V  $\overline{=}$  3A  
**Output Rating** : 5V  $\overline{=}$  3A  
**Test Standards** : EN 61000-6-3: 2007+A1:2011+AC: 2012  
EN 61000-6-1: 2019

This Attestation of conformity is based on evaluation of a sample of the above mentioned product. Technical report and documentation are at the license Holder's disposal. This is to certify that the tested sample is in conformity with the Council Directive 2014/30/EU, referred to as the EMC. It is possible to use CE marking to demonstrate the conformity with this EMC Directive.



Test Laboratory

Alan He  
EMC Manager

Date of Issue: May 19, 2021

This Attestation of conformity is based on a single evaluation of the submitted sample(s) of the above mentioned product. It does not imply an assessment of the whole production and other relevant Directives have to be observed.



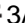
# EMC TEST REPORT



## For Electromagnetic Interference of

Report Reference No. ....:	EA21040390E07001	
Test Engineer (name + signature)....:	Poal Chen	
Reviewed by (name + signature) ....:	Tiger Xu	
Approved by (name + signature).....:	Alan He	
Date of issue .....	May 19, 2021	
Testing Laboratory.....:	Dongguan Anci Electronic Technology Co., Ltd.	
Address .....	1-2 Floor, Building A, No.11, Headquarters 2 Road, Songshan Lake Hi-tech Industrial Development Zone, Dongguan City, Guangdong, China	
Laboratory location.....:	EMC Laboratory	
Applicant's name .....	Ledlenser Corporation Ltd.	
Address .....	No.25, Yudong 1 Road, Dongcheng Town, Yangdong District, Yangjiang City, GD, 529931, China	
Manufacturer .....	Huizhou Golden Lake Industrial Co., Ltd.	
Address .....	Dongjiang Industrial Estate, Shuikou Street, Huicheng District, Huizhou City, Guangdong Province, 516005, P.R.China	
First Factory's name.....:	Huizhou Golden Lake Industrial Co., Ltd.	
Address.....:	Dongjiang Industrial Estate, Shuikou Street, Huicheng District, Huizhou City, Guangdong Province, 516005, P.R.China	

**Test specification:**

EUT description.....:	Powerbank Flex10
Trade Mark.....:	 LEDLENSER
Model/Type reference.....:	502127
Test Sample.....:	502127
Input Rating.....:	5V  3A
Output Rating.....:	5V  3A
Tested Power.....:	DC 5V/3A from Adapter, EUT Battery
Standards.....:	EN 61000-6-3: 2007+A1:2011+AC: 2012 EN 61000-6-1: 2019

The device described above was tested by Dong Guan Anci Electronic Technology Co., Ltd. to determine the maximum emission levels emanated from the device and severity levels of the device endure and its performance criterion. The measurement results are contained in this test report and Dong Guan Anci Electronic Technology Co., Ltd. assumes full responsibility for the accuracy and completeness of these measurements. This report shows the EUT is technically compliance with the above official standards.

This report applies to the above sample only and shall not be reproduced in part without written approval of Dong Guan Anci Electronic Technology Co., Ltd.

<b>Table of Contents</b>	<b>Page</b>
<b>1. GENERAL INFORMATION</b>	<b>6</b>
1.1 PRODUCT INFORMATION	6
1.2 Details about the Test Laboratory	7
<b>2. SUMMARY OF TEST RESULTS</b>	<b>9</b>
2.1 MEASUREMENT UNCERTAINTY	11
2.2 DESCRIPTION OF TEST MODES	11
2.3 BLOCK DIGRAM SHOWING THE CONFIGURATION OF SYSTEM TESTED	12
<b>3. EMISSION TEST</b>	<b>13</b>
3.1 CONDUCTED EMISSION MEASUREMENT	13
3.1.1 LIMITS OF CONDUCTED EMISSION(MAINS PORT)	13
3.1.2 MEASUREMENT INSTRUMENTS LIST	13
3.1.3 TEST PROCEDURE	14
3.1.4 DEVIATION FROM TEST STANDARD	14
3.1.5 TEST SETUP	15
3.1.6 EUT OPERATING CONDITIONS	15
3.1.7 TEST RESULTS	15
3.2 RADIATED EMISSION MEASUREMENT	16
3.2.1 LIMITS OF RADIATED EMISSION MEASUREMENT	16
3.2.2 MEASUREMENT INSTRUMENTS LIST	16
3.2.3 TEST PROCEDURE	18
3.2.4 DEVIATION FROM TEST STANDARD	18
3.2.5 TEST SETUP	18
3.2.6 EUT OPERATING CONDITIONS	18
3.2.7 TEST RESULTS	19
<b>4. IMMUNITY TEST</b>	<b>24</b>
4.1 STANDARD COMPLIANCE/SERVURITY LEVEL/CRITERIA	24
4.2 GENERAL PERFORMANCE CRITERIA	25
4.3 GENERAL PERFORMANCE CRITERIA TEST SETUP	25
4.4 ESD TESTING	26
4.4.1 TEST SPECIFICATION	26
4.4.2 MEASUREMENT INSTRUMENTS	26
4.4.3 TEST PROCEDURE	26
4.4.4 DEVIATION FROM TEST STANDARD	27
4.4.5 TEST SETUP	27
4.4.6 TEST RESULTS	28

<b>Table of Contents</b>	<b>Page</b>
4.5 RS TESTING	29
4.5.1 TEST SPECIFICATION	29
4.5.2 MEASUREMENT INSTRUMENTS	29
4.5.3 TEST PROCEDURE	29
4.5.4 DEVIATION FROM TEST STANDARD	29
4.5.5 TEST SETUP	30
4.5.6 TEST RESULTS	31
4.6 EFT/BURST TESTING	32
4.6.1 TEST SPECIFICATION	32
4.6.2 MEASUREMENT INSTRUMENTS	32
4.6.3 TEST PROCEDURE	32
4.6.4 DEVIATION FROM TEST STANDARD	32
4.6.5 TEST SETUP	33
4.6.6 TEST RESULTS	33
4.7 SURGE TESTING	34
4.7.1 TEST SPECIFICATION	34
4.7.2 MEASUREMENT INSTRUMENTS	34
4.7.3 TEST PROCEDURE	34
4.7.4 DEVIATION FROM TEST STANDARD	35
4.7.5 TEST SETUP	35
4.7.6 TEST RESULTS	35
4.8 INJECTION CURRENT TESTING	36
4.8.1 TEST SPECIFICATION	36
4.8.2 MEASUREMENT INSTRUMENTS	36
4.8.3 TEST PROCEDURE	36
4.8.4 DEVIATION FROM TEST STANDARD	36
4.8.5 TEST SETUP	37
4.8.6 TEST RESULTS	37
4.9 VOLTAGE INTERRUPTION/DIPS TESTING	38
4.9.1 TEST SPECIFICATION	38
4.9.2 MEASUREMENT INSTRUMENTS	38
4.9.3 TEST PROCEDURE	38
4.9.4 DEVIATION FROM TEST STANDARD	38
4.9.5 TEST SETUP	39
4.9.6 TEST RESULTS	39
4.10 POWER-FREQUENCY MAGNETIC FILDS	40
4.10.1 MEASUREMENT INSTRUMENTS	40
4.10.2 TEST LEVEL AND PERFORMANCE CRITERION	40
4.10.3 TEST PROCEDURE	40

<b>Table of Contents</b>		<b>Page</b>
4.10.4	DEVIATION FROM TEST STANDARD	40
4.10.5	TEST SETUP	41
4.10.6	TEST RESULTS	41
5.	ATTACHMENT	42
5.1	EUT TEST PHOTO	42
5.2	EUT PHOTO	43



## **1. GENERAL INFORMATION**

### **1.1 PRODUCT INFORMATION**

The equipment model 502127 is Powerbank Flex10 for the use in residential, commercial and light-industrial environments.

**1.2 Details about the Test Laboratory****Test Site 1:**

Company name: Dongguan Anci Electronic Technology Co., Ltd.

Address: 1-2 Floor, Building A, No.11, Headquarters 2 Road, Songshan Lake  
Hi-tech Industrial Development Zone, Dongguan City,  
Guangdong Pr., China.

Telephone: +86-769- 8507 5888

Fax: +86-769- 8507 5898

**Test Site 2:**

Company name: Guangdong Dongguan Quality Supervision Testing Center

Address: No.2 South Industry Road, Dongguan Songshan Lake  
Sci.&Tech. Industrial Park, Guangdong Province, China

Telephone: +86 769 2307 1111

Fax: +86 769 2307 7221

Standard	Test Item	Test Site
EN 61000-6-3: 2007+A1:2011+AC:2012	Conducted Emission	N/A
	Radiated Emission Below 1 GHz	1
	Radiated Emission Above 1 GHz	N/A
EN 61000-4-2:2009	Electrostatic Discharge	1
EN 61000-4-3:2006 +A1:2008+A2: 2010	RF electromagnetic field	2
EN 61000-4-4:2012	Fast transients	N/A
EN 61000-4-5:2014	Surges	N/A
EN 61000-4-6:2014	Injected Current	N/A
EN 61000-4-8:2010	Power Frequency Magnetic Field	2
EN 61000-4-11:2004	Volt. Interruptions Volt. Dips	N/A

**2. SUMMARY OF TEST RESULTS**

Test procedures according to the technical standards:

<b>Emission</b>				
Standard	Test Item	Limit	Judgment	Remark
EN 61000-6-3: 2007+A1:2011+AC:2012	Conducted Emission	Class B	N/A	
	Radiated Emission Below 1 GHz	Class B	PASS	
	Radiated Emission Above 1 GHz	Class B	N/A	NOTE (1) NOTE (4)
<b>Immunity (EN 61000-6-1: 2019)</b>				
Section	Test Item	Performance Criteria	Judgment	Remark
EN 61000-4-2:2009	Electrostatic Discharge	B	PASS	
EN 61000-4-3:2006 +A1:2008+A2: 2010	RF electromagnetic field	A	PASS	
EN 61000-4-4:2012	Fast transients	B	N/A	
EN 61000-4-5:2014	Surges	B	N/A	
EN 61000-4-6:2014	Injected Current	A	N/A	
EN 61000-4-8:2010	Power Frequency Magnetic Field	A	PASS	
EN 61000-4-11:2004	Volt. Interruptions Volt. Dips	B / C / C	N/A	

**NOTE:**

- (1) "N/A" denotes test is not applicable in this Test Report
- (2) The power consumption of EUT is less than 75W and no Limits apply.
- (3) Voltage dip: >95% reduction – Performance Criteria **B**  
 Voltage dip: 30% reduction – Performance Criteria **C**  
 Voltage Interruption: >95% reduction – Performance Criteria **C**

- (4) If the highest frequency of the internal sources of the EUT is less than 108 MHz, the measurement shall only be made up to 1 GHz. If the highest frequency of the internal sources of the EUT is between 108 MHz and 500 MHz, the measurement shall only be made up to 2GHz. If the highest frequency of the internal sources of the EUT is between 500 MHz and 1GHz, measurement shall only be made up to 5 GHz. If the highest frequency of the internal sources of the EUT is above 1 GHz, the measurement shall be made up to 5 times the highest frequency or 40 GHz, whichever is less.
- (5) Test in the shielding room.

**2.1 MEASUREMENT UNCERTAINTY**

The reported uncertainty of measurement  $y \pm U$ , where expanded uncertainty  $U$  is based on a standard uncertainty multiplied by a coverage factor of  $k=2$ , providing a level of confidence of approximately 95 %.

A. Conducted Measurement :

Test Site	Method	Measurement Frequency Range	U (dB)	NOTE
C01	ANSI	150 KHz ~ 30MHz	3.19	

B. Radiated Measurement :

Test Site	Method	Measurement Frequency Range	Ant. H / V	U (dB)	NOTE
S02	ANSI	30MHz ~ 200MHz	V	3.69	
		30MHz ~ 200MHz	H	3.69	
		200MHz ~ 1,000MHz	V	3.67	
		200MHz ~ 1,000MHz	H	3.67	

**2.2 DESCRIPTION OF TEST MODES**

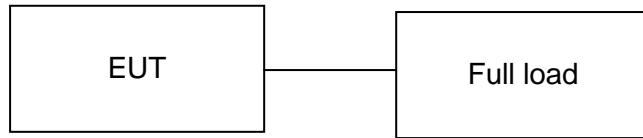
To investigate the maximum EMI emission characteristics generates from EUT, the test system was pre-scanning tested base on the consideration of following EUT operation mode or test configuration mode which possible have effect on EMI emission level. Each of these EUT operation mode(s) or test configuration mode(s) mentioned above was evaluated respectively.

For Conducted Test	
Test Mode	Description
Mode	N/A

For Radiated Test	
Test Mode	Description
Mode	Charging, Discharging

For EMS Test	
Test Mode	Description
Mode	Charging, Discharging

2.3 BLOCK DIGRAM SHOWING THE CONFIGURATION OF SYSTEM TESTED



The EUT has been tested as an independent unit together with other necessary accessories or support units. The following support units or accessories were used to form a representative test configuration during the tests.

Item	Equipment	Specification
E-1	Resistance	20Ω 4A

Item	Type of cable
C-1	DC Cable

### 3. EMISSION TEST

#### 3.1 CONDUCTED EMISSION MEASUREMENT

##### 3.1.1 LIMITS OF CONDUCTED EMISSION(MAINS PORT) (Frequency Range 150KHz-30MHz)

FREQUENCY (MHz)	Class A (dBuV)		Class B (dBuV)	
	Quasi-peak	Average	Quasi-peak	Average
0.15 -0.5	79.00	66.00	66 - 56 *	56 - 46 *
0.50 -5.0	73.00	60.00	56.00	46.00
5.0 -30.0	73.00	60.00	60.00	50.00

Note:

- (1) The tighter limit applies at the band edges.
- (2) The limit of " \* " marked band means the limitation decreases linearly with the logarithm of the frequency in the range.
- (3) The test result calculated as following:

Measurement Value = Reading Level + Correct Factor

Correct Factor = Insertion Loss + Cable Loss + Attenuator Factor (if use)

Margin Level = Measurement Value - Limit Value

The following table is the setting of the receiver

Receiver Parameters	Setting
Attenuation	10 dB
Start Frequency	0.15 MHz
Stop Frequency	30 MHz
IF Bandwidth	9 kHz

##### 3.1.2 MEASUREMENT INSTRUMENTS LIST

Item	Kind of Equipment	Manufacturer	Type No.	Serial No.	Calibrated until
1	L.I.S.N	SCHWARZBECK	NSLK 8127	8127-669	2021-05-23
2	10 db attenuator	JFW	50FP-010-H4	4360846-427-1	2021-05-23
3	RF Cable	N/A	N/A	2#	2021-05-23
4	EMI Test Receiver	ROHDE&SCHWARZ	ESCI	101358	2021-05-23
5	Shielded Room	chengyu	8m*4m*3m	N/A	2022-06-19
6	Test Software	Farad	EZ-EMC Ver:ANCI-8A1	N/A	N/A

Remark: " N/A" denotes No Model No. , Serial No. or No Calibration specified.

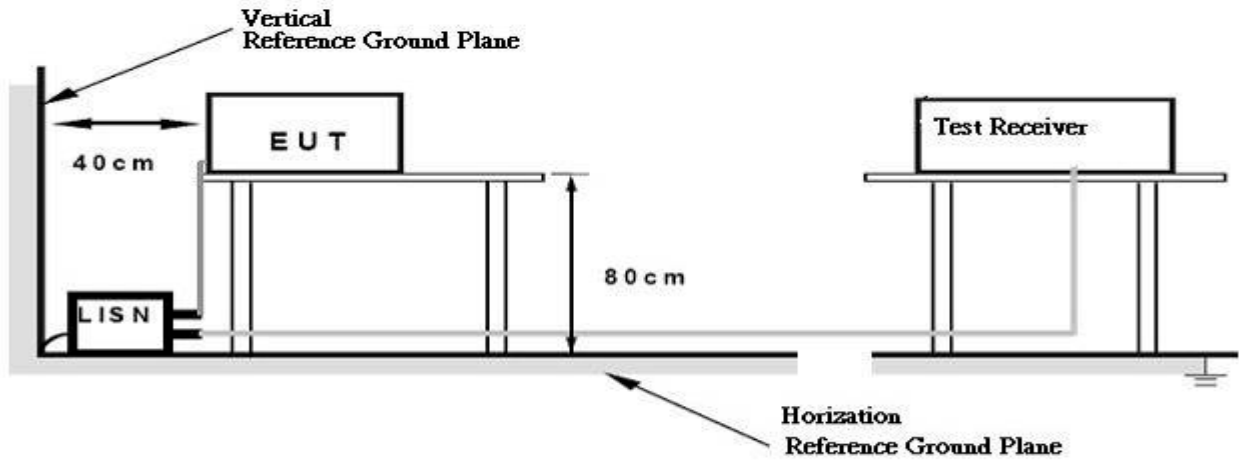
**3.1.3 TEST PROCEDURE**

- a. The EUT was placed 0.4 meters from the horizontal ground plane with EUT being connected to the power mains through a line impedance stabilization network (LISN). All other support equipments powered from additional LISN(s). The LISN provide 50 Ohm/ 50uH of coupling impedance for the measuring instrument.
- b. Interconnecting cables that hang closer than 40 cm to the ground plane shall be folded back and forth in the center forming a bundle 30 to 40 cm long.
- c. I/O cables that are not connected to a peripheral shall be bundled in the center. The end of the cable may be terminated, if required, using the correct terminating impedance. The overall length shall not exceed 1 m.
- d. LISN at least 80 cm from nearest part of EUT chassis.
- e. For the actual test configuration, please refer to the related Item –EUT Test Photos.

**3.1.4 DEVIATION FROM TEST STANDARD**

No deviation

### 3.1.5 TEST SETUP



### 3.1.6 EUT OPERATING CONDITIONS

The EUT exercise program used during radiated and/or conducted emission measurement was designed to exercise the various system components in a manner similar to a typical use.

### 3.1.7 TEST RESULTS

No applicable the DC product.

### 3.2 RADIATED EMISSION MEASUREMENT

#### 3.2.1 LIMITS OF RADIATED EMISSION MEASUREMENT (Below 1000MHz)

FREQUENCY (MHz)	Class A (at 3m)	Class B (at 3m)
	dBuV/m	dBuV/m
30 – 230	50	40
230 – 1000	57	47

Notes:

- (1) The limit for radiated test was performed according to as following:  
IEC 61000-6-3.
- (2) The tighter limit applies at the band edges.
- (3) Emission level (dBuV/m)=20log Emission level (uV/m).

#### LIMITS OF RADIATED EMISSION MEASUREMENT (Above 1000MHz)

FREQUENCY (GHz)	Class A (dBuV/m) (at 3m)		Class B (dBuV/m) (at 3m)	
	PEAK	AVERAGE	PEAK	AVERAGE
1 ~ 3	76	56	74	54
3 ~ 6	80	60	70	50

Notes:

- (1) The limit for radiated test was performed according to IEC 61000-6-3.
- (2) The tighter limit applies at the band edges.
- (3) Emission level (dBuV/m)=20log Emission level (uV/m).

#### 3.2.2 MEASUREMENT INSTRUMENTS LIST

##### 3m Radiated Emission Measurement 30MHz-1GHz

Item	Kind of Equipment	Manufacturer	Type No.	Serial No.	Calibrated until
1	EMI Test Receiver	Rohde & Schwarz	ESPI	100502	2021-11-28
2	Pre-Amplifier	HP	8447D	2727A06172	2021-05-23
3	Bilog Antenna	Schwarzbeck	VULB9163	VULB9163-588	2021-05-23
4	RF Cable	N/A	N/A	6#	2021-05-23
5	RF Cable	N/A	N/A	1-1#	2021-05-23
6	3m Semi-anechoic Chamber	chengyu	9m*6m*6m	N/A	2022-06-19
7	Test Software	Farad	EZ-EMC Ver:ANCI-3A1	N/A	N/A



## 3m Radiated Emission Measurement 1GHz-18GHz

Item	Kind of Equipment	Manufacturer	Type No.	Serial No.	Calibrated until
1	Spectrum Analyzer	Rohde & Schwarz	FSV40	US40240623	2021-11-28
2	Low noise Amplifiers	A-INFO	LA1018N4009	J1013130524001	2021-05-23
3	Horn antenna	A-INFO	LB-10180-SF	J2031090612123	2021-05-23
4	RF Cable	N/A	N/A	1-2#	2021-05-23
5	RF Cable	N/A	N/A	7#	2021-05-23
6	3m Semi-anechoic Chamber	chengyu	9m*6m*6m	N/A	2022-06-19
7	Test Software	Farad	EZ-EMC Ver:ANCI-3A1	N/A	N/A

Remark: " N/A" denotes No Model No. / Serial No. and No Calibration specified.

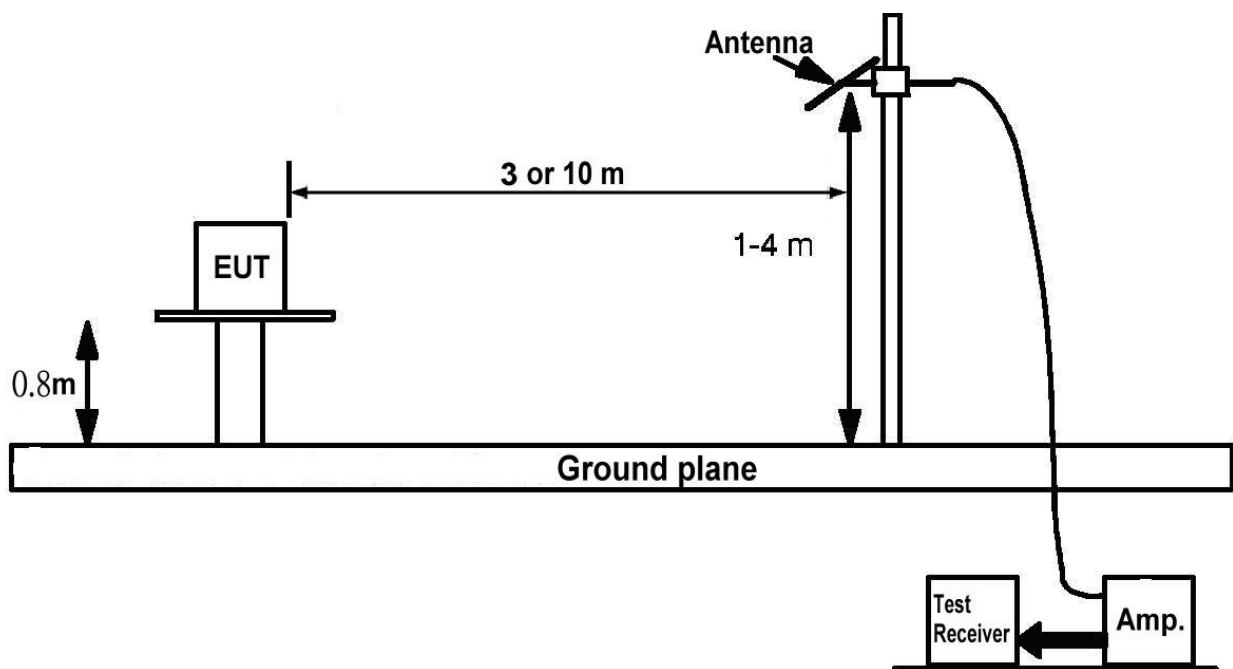
### 3.2.3 TEST PROCEDURE

- The measuring distance of at 3m or 10 m shall be used for measurements at frequency up to 1GHz. For frequencies above 1GHz, any suitable measuring distance may be used.
- The EUT was placed on the top of a rotating table 0.8 meters above the ground at a 3m or 10 meter open area test site. The table was rotated 360 degrees to determine the position of the highest radiation.
- The height of the equipment or of the substitution antenna shall be 0.8 m; the height of the test antenna shall vary between 1 m to 4 m. Both horizontal and vertical polarizations of the antenna are set to make the measurement.
- The initial step in collecting conducted emission data is a spectrum analyzer peak detector mode pre-scanning the measurement frequency range. Significant peaks are then marked and then Quasi Peak detector mode re-measured.
- If the Peak Mode measured value compliance with and lower than Quasi Peak Mode Limit, the EUT shall be deemed to meet QP Limits and then no additional QP Mode measurement performed.
- For the actual test configuration, please refer to the related Item –EUT Test Photos.

### 3.2.4 DEVIATION FROM TEST STANDARD

No deviation

### 3.2.5 TEST SETUP



### 3.2.6 EUT OPERATING CONDITIONS

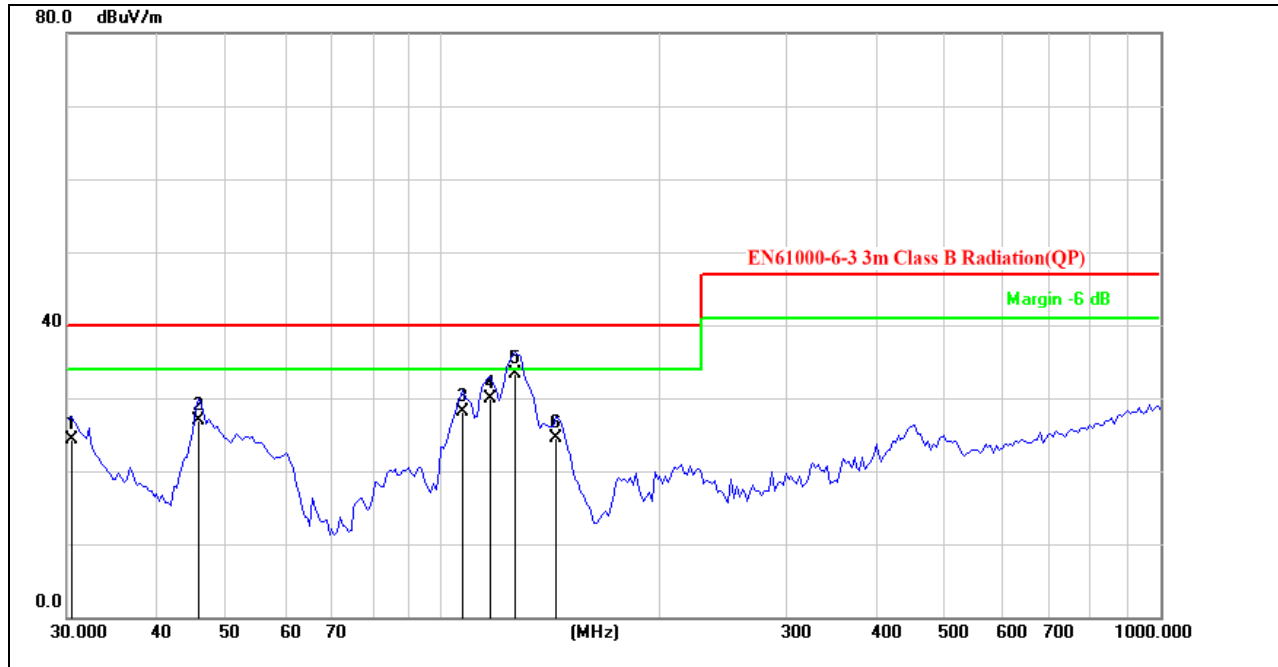
The EUT tested system was configured as the statements of 3.1.6 Unless otherwise a special operating condition is specified in the follows during the testing.

**3.2.7 TEST RESULTS**

<b>EUT:</b>	Powerbank Flex10	<b>Model No.:</b>	502127
<b>Temperature:</b>	22.5°C	<b>Relative Humidity:</b>	55%
<b>Pressure:</b>	1008 hPa	<b>Test Power :</b>	DC 5V/3A from Adapter, EUT Battery
<b>Test Mode :</b>	Charging, Discharging		

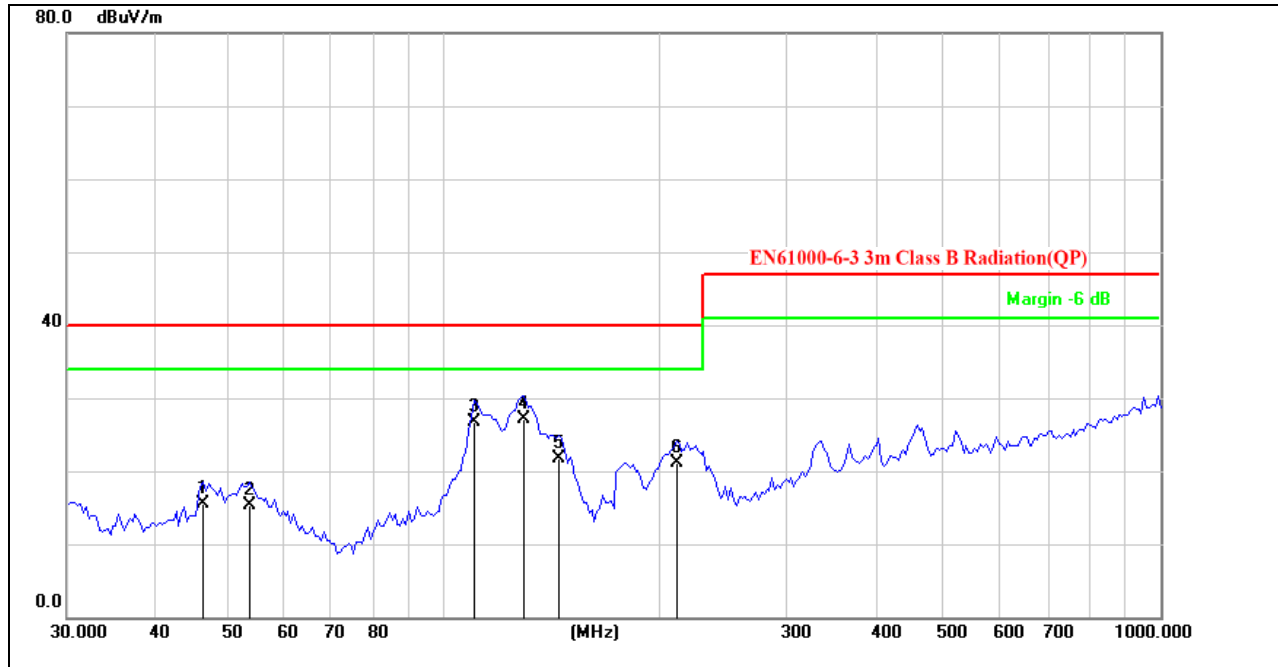
Remark :

- (1) Reading in which marked as QP or Peak means measurements by using are Quasi-Peak Detector or Peak Detector.
- (2) All readings are Peak unless otherwise stated QP in column of 『Note』 . Peak denotes that the Peak reading compliance with the QP Limits and then QP Mode measurement didn't perform.
- (3) Measuring frequency range from 30MHz to 1000MHz.
- (4) If the peak scan value lower limit more than 20dB, then this signal data does not show in table.



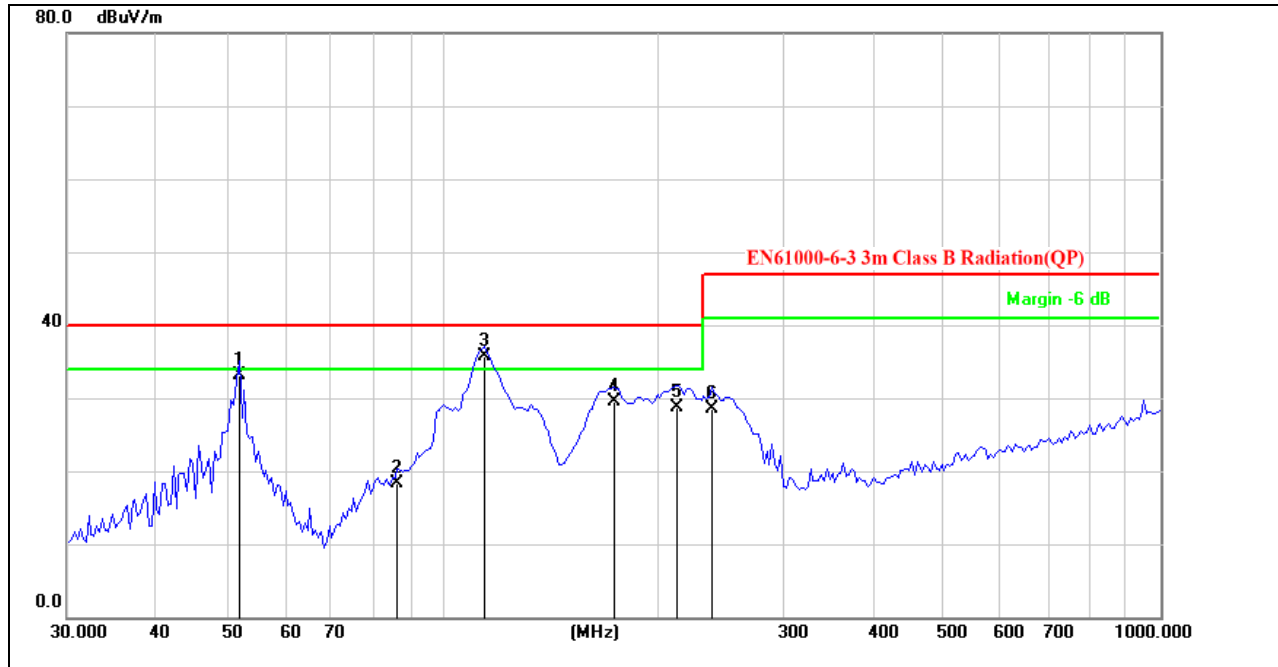
<b>Site:</b> LAB	<b>Antenna:</b> Vertical	<b>Temperature(C):</b> 22.5(C)
<b>Limit:</b> EN61000-6-3 3m Class B Radiation(QP)		<b>Humidity(%):</b> 55%
<b>EUT:</b> Powerbank Flex10	<b>Test Time:</b> 2021-04-25	
<b>M/N.:</b> 502127	<b>Power Rating:</b> DC 5V/3A from Adapter	
<b>Mode:</b> Charging	<b>Test Engineer:</b> Jack	
<b>Note:</b>		

No.	Frequency (MHz)	Factor (dB/m)	Reading (dBuV)	Level (dBuV/m)	Limit (dBuV/m)	Margin (dB)	Det.	Remark
1	30.5306	39.08	-14.68	24.40	40.00	-15.60	QP	
2	45.6948	39.31	-12.41	26.90	40.00	-13.10	QP	
3	106.9461	39.30	-11.20	28.10	40.00	-11.90	QP	
4	116.7446	42.22	-12.32	29.90	40.00	-10.10	QP	
5	126.3286	46.88	-13.58	33.30	40.00	-6.70	QP	
6	144.0819	38.95	-14.45	24.50	40.00	-15.50	QP	



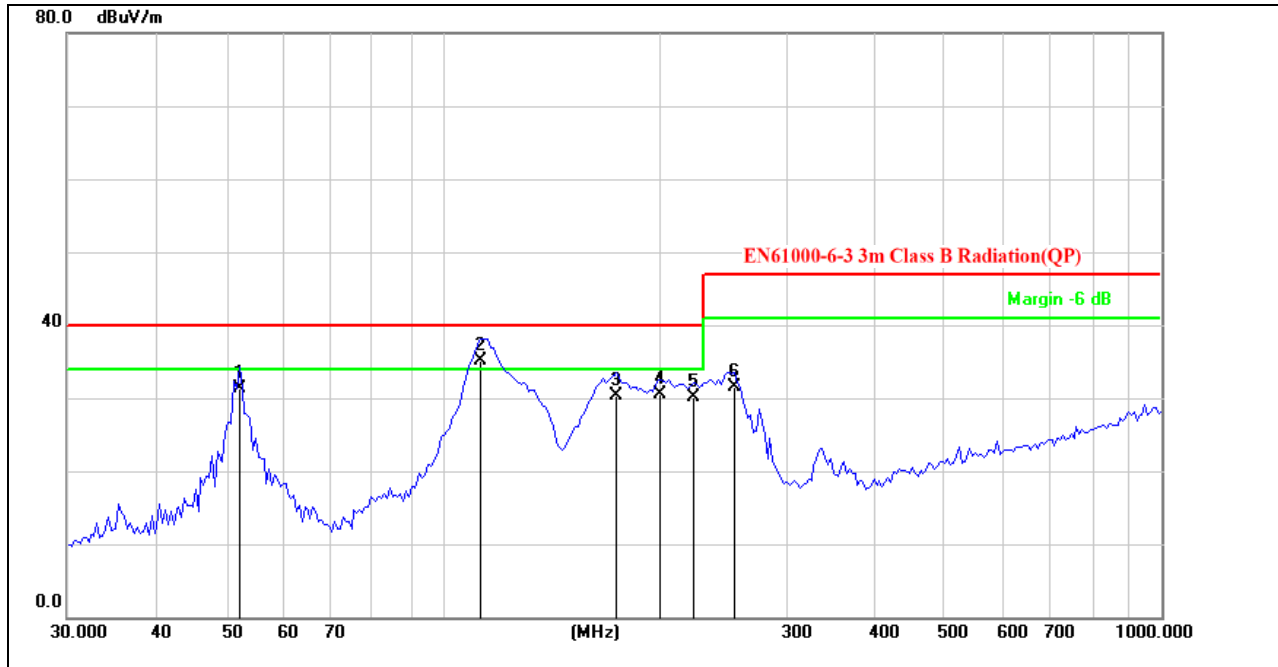
<b>Site:</b>	<b>LAB</b>	<b>Antenna:</b>	<b>Horizontal</b>	<b>Temperature(C):</b>	<b>22.5(C)</b>
<b>Limit:</b>	<b>EN61000-6-3 3m Class B Radiation(QP)</b>			<b>Humidity(%):</b>	<b>55%</b>
<b>EUT:</b>	<b>Powerbank Flex10</b>	<b>Test Time:</b>	<b>2021-04-25</b>		
<b>M/N.:</b>	<b>502127</b>	<b>Power Rating:</b>	<b>DC 5V/3A from Adapter</b>		
<b>Mode:</b>	<b>Charging</b>	<b>Test Engineer:</b>	<b>Jack</b>		
<b>Note:</b>					

No.	Frequency (MHz)	Factor (dB/m)	Reading (dBuV)	Level (dBuV/m)	Limit (dBuV/m)	Margin (dB)	Det.	Remark
1	46.5030	27.92	-12.32	15.60	40.00	-24.40	QP	
2	53.9763	27.98	-12.58	15.40	40.00	-24.60	QP	
3	110.7627	38.07	-11.37	26.70	40.00	-13.30	QP	
4	129.6950	41.18	-13.98	27.20	40.00	-12.80	QP	
5	145.3506	36.23	-14.43	21.80	40.00	-18.20	QP	
6	211.8977	31.71	-10.51	21.20	40.00	-18.80	QP	



<b>Site:</b> LAB	<b>Antenna:</b> Vertical	<b>Temperature(C):</b> 22.5(C)
<b>Limit:</b> EN61000-6-3 3m Class B Radiation(QP)		<b>Humidity(%):</b> 55%
<b>EUT:</b> Powerbank Flex10	<b>Test Time:</b> 2021-04-25	
<b>M/N.:</b> 502127	<b>Power Rating:</b> EUT Battery	
<b>Mode:</b> Discharging	<b>Test Engineer:</b> Jack	
<b>Note:</b>		

No.	Frequency (MHz)	Factor (dB/m)	Reading (dBuV)	Level (dBuV/m)	Limit (dBuV/m)	Margin (dB)	Det.	Remark
1	52.1164	45.39	-12.26	33.13	40.00	-6.87	QP	
2	86.6547	32.15	-13.86	18.29	40.00	-21.71	QP	
3	114.7156	47.70	-12.00	35.70	40.00	-4.30	QP	
4	173.2051	42.09	-12.65	29.44	40.00	-10.56	QP	
5	211.8977	39.21	-10.51	28.70	40.00	-11.30	QP	
6	237.4760	38.49	-9.92	28.57	47.00	-18.43	QP	



<b>Site:</b>	LAB	<b>Antenna:</b>	Horizontal	<b>Temperature(C):</b>	22.5(C)
<b>Limit:</b>	EN61000-6-3 3m Class B Radiation(QP)			<b>Humidity(%):</b>	55%
<b>EUT:</b>	Powerbank Flex10	<b>Test Time:</b>			2021-04-25
<b>M/N.:</b>	502127	<b>Power Rating:</b>			EUT Battery
<b>Mode:</b>	Discharging	<b>Test Engineer:</b>			Jack
<b>Note:</b>					

No.	Frequency (MHz)	Factor (dB/m)	Reading (dBuV)	Level (dBuV/m)	Limit (dBuV/m)	Margin (dB)	Det.	Remark
1	52.1164	43.56	-12.26	31.30	40.00	-8.70	QP	
2	112.7218	46.88	-11.68	35.20	40.00	-4.80	QP	
3	174.7301	42.79	-12.55	30.24	40.00	-9.76	QP	
4	201.0402	41.26	-10.76	30.50	40.00	-9.50	QP	
5	223.3415	40.26	-10.25	30.01	40.00	-9.99	QP	
6	254.7284	41.07	-9.52	31.55	47.00	-15.45	QP	

#### 4. IMMUNITY TEST

##### 4.1 STANDARD COMPLIANCE/SERVRITY LEVEL/CRITERIA

Tests Standard No.	Test Specification	Test Mode Test Ports	Perform. Criteria	Remark
1. ESD IEC 61000-4-2	8KV air discharge 4KV contact discharge	Direct Mode	B	PASS
	4KV HCP discharge 4KV VCP discharge	Indirect Mode	B	PASS
2. RS IEC 61000-4-3	80 MHz - 1000 MHz; 1.4 GHz – 6.0 GHz 3V/m(rms), 1 KHz, 80%, AM modulated	Enclosure	A	PASS
3. EFT/Burst IEC 61000-4-4	1.0KV(peak) 5/50ns Tr/Th 5KHz or 100KHz Repetition Freq.	AC Power Port	B	N/A
	0.5 KV(peak) 5/50ns Tr/Th 5KHz or 100KHz Repetition Freq.	CTL/Signal Data Line Port	B	N/A
4. Surges IEC 61000-4-5	1 KV(5P/5N) 1.2/50(8/20) Tr/Th us	L-N	B	N/A
	2 KV(5P/5N) 1.2/50(8/20) Tr/Th us	L-PE N-PE	B	N/A
5 Injected Current IEC 61000-4-6	0.15 MHz to 80 MHz 3V(rms), 1KHz 80%, AM Modulated 150Ω source impedance	CTL/Signal Port	A	N/A
	0.15 MHz to 80 MHz 3V(rms), 1KHz 80%, AM Modulated 150Ω source impedance	AC Power Port	A	N/A
	0.15 MHz to 80 MHz 3V(rms), 1KHz 80%, AM Modulated 150Ω source impedance	DC Power Port	A	N/A
6. Power Frequency Magnetic Field IEC 61000-4-8	50 Hz; 60Hz, 3A/m	Enclosure	A	PASS
7. Volt. Interruptions Volt. Dips IEC 61000-4-11	Voltage dip > 0% Interruption > 70%	AC Power Port	B C	N/A

See Remark(2)

\* Remark:

(1) "N/A": denotes test is not applicable in this Test Report.

 (2) Voltage dip: >0% reduction – Performance Criteria **B**

 Voltage dip: 70% reduction – Performance Criteria **C**

 Voltage Interruption: >95% reduction – Performance Criteria **C**

#### 4.2 GENERAL PERFORMANCE CRITERIA

According to **EN 61000-6-1: 2019** standard, the general performance criteria as following:

<b>Criterion A</b>	The equipment shall continue to operate as intended without operator intervention. No degradation of performance or loss of function is allowed below a performance level specified by the manufacturer when the equipment is used as intended. The performance level may be replaced by a permissible loss of performance. If the minimum performance level or the permissible performance loss is not specified by the manufacturer, then either of these may be derived from the product description and documentation, and by what the user product description and documentation, and by what the user may reasonably expect from the equipment if used as intended.
<b>Criterion B</b>	After the test, the equipment shall continue to operate as intended without operator Intervention. No degradation of performance or loss of function is allowed, after the application of the phenomenon below a performance level specified by the manufacturer, when the equipment is used as intended. The performance level may be replaced by a permissible loss of performance. During the test, degradation of performance is allowed. However, no change of operating state if stored data allowed to persist after the test. If the minimum performance level (or the permissible performance loss) is not specified by the manufacturer, then either of these may be derived from the product description and documentation, and by what the user may reasonably expect from the equipment if used as intended.
<b>Criterion C</b>	Loss of function is allowed, provided the function is self-recoverable, or can be restored by the operation of the controls by the user in accordance with the manufacturer's instructions. Functions, and/or information stored in non-volatile memory, or protected by a battery backup, shall not be lost.

#### 4.3 GENERAL PERFORMANCE CRITERIA TEST SETUP

The EUT tested system was configured as the statements of **3.1.6** Unless otherwise a special operating condition is specified in the follows during the testing.

#### 4.4 ESD TESTING

##### 4.4.1 TEST SPECIFICATION

<b>Basic Standard:</b>	IEC 61000-4-2
<b>Discharge Impedance:</b>	330 ohm / 150 pF
<b>Required Performance</b>	B
<b>Discharge Voltage:</b>	Air Discharge: 2kV/4kV/8kV (Direct) Contact Discharge: 2kV/4kV (Direct/Indirect)
<b>Polarity:</b>	Positive & Negative
<b>Number of Discharge:</b>	Air Discharge: min. 20 times at each test point Contact Discharge: min. 200 times in total
<b>Discharge Mode:</b>	Contact and Air
<b>Discharge Period:</b>	1 second minimum

##### 4.4.2 MEASUREMENT INSTRUMENTS

Item	Kind of Equipment	Manufacturer	Type No.	Serial No.	Calibrated until
1	ESD Simulator	Prima	ESD61002B	PR13012530	2021-05-23

Remark: " N/A" denotes No Model No. / Serial No. and No Calibration specified.

##### 4.4.3 TEST PROCEDURE

The test generator necessary to perform direct and indirect application of discharges to the EUT in the following manner:

- a. Contact discharge was applied to conductive surfaces and coupling planes of the EUT.
 

During the test, it was performed with single discharges. For the single discharge time between successive single discharges was at least 1 second. The EUT shall be exposed to at least 200 discharges, 100 each at negative and positive polarity, at a minimum of four test points. One of the test points shall be subjected to at least 50 indirect discharges to the center of the front edge of the horizontal coupling plane. The remaining three test points shall each receive at least 50 direct contact discharges.

If no direct contact test points are available, then at least 200 indirect discharges shall be applied in the indirect mode. Test shall be performed at a maximum repetition rate of one discharge per second.

Vertical Coupling Plane (VCP):  
The coupling plane, of dimensions 0.5m x 0.5m, is placed parallel to, and positioned at a distance 0.1m from, the EUT, with the Discharge Electrode touching the coupling plane.  
The four faces of the EUT will be performed with electrostatic discharge.

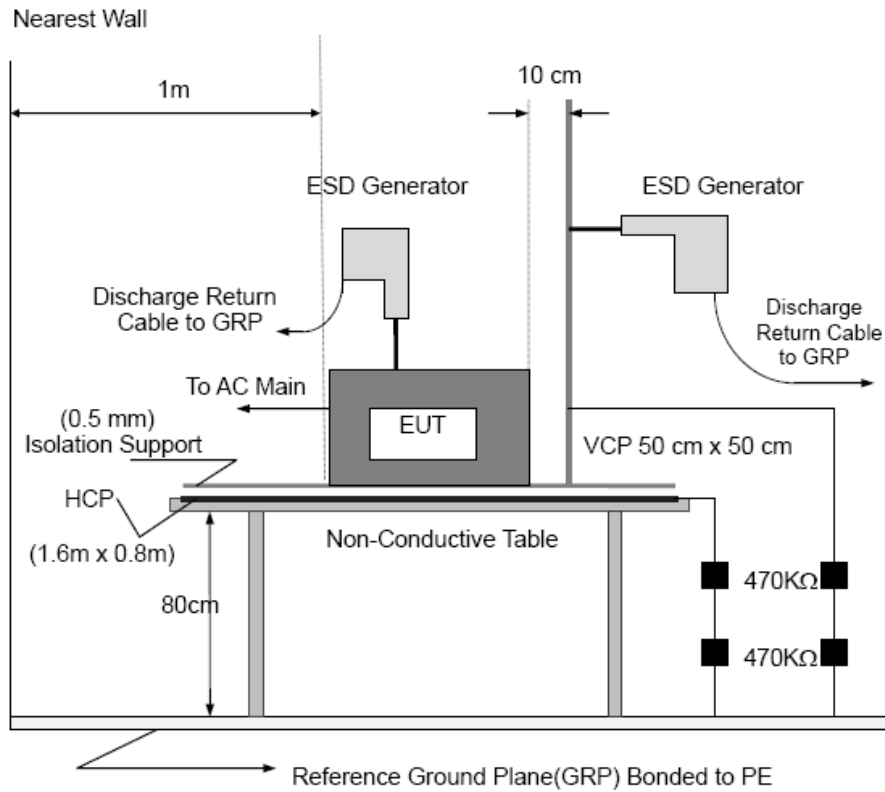
Horizontal Coupling Plane (HCP):  
The coupling plane is placed under to the EUT. The generator shall be positioned vertically at a distance of 0.1m from the EUT, with the Discharge Electrode touching the coupling plane.  
The four faces of the EUT will be performed with electrostatic discharge.
- b. Air discharges at insulation surfaces of the EUT.
 

It was at least ten single discharges with positive and negative at the same selected point.
- c. For the actual test configuration, please refer to the related Item –EUT Test Photos.

**4.4.4 DEVIATION FROM TEST STANDARD**

No deviation

**4.4.5 TEST SETUP**



Note:

**TABLE-TOP EQUIPMENT**

The configuration consisted of a wooden table 0.8 meters high standing on the Ground Reference Plane. The GRP consisted of a sheet of aluminum at least 0.25mm thick, and 2.5 meters square connected to the protective grounding system. A Horizontal Coupling Plane (1.6m x 0.8m) was placed on the table and attached to the GRP by means of a cable with 940k total impedance. The equipment under test, was installed in a representative system as described in section 7 of IEC /EN 61000-4-2, and its cables were placed on the HCP and isolated by an insulating support of 0.5mm thickness. A distance of 1-meter minimum was provided between the EUT and the walls of the laboratory and any other metallic structure.

**FLOOR-STANDING EQUIPMENT**

The equipment under test was installed in a representative system as described in section 7 of IEC/EN 61000-4-2, and its cables were isolated from the Ground Reference Plane by an insulating support of 0.1-meter thickness. The GRP consisted of a sheet of aluminum that is at least 0.25mm thick, and 2.5meters square connected to the protective grounding system and extended at least 0.5 meters from the EUT on all sides.

**4.4.6 TEST RESULTS**

Mode	Air Discharge								Contact Discharge							
	2KV		4KV		8KV		12KV		2KV		4KV		6KV		8KV	
Location	P	N	P	N	P	N	P	N	P	N	P	N	P	N	P	N
1	--	--	--	--	A	A	--	--	--	--	--	--	--	--	--	--
2	--	--	--	--	--	--	--	--	--	--	A	A	--	--	--	--
3	-	--	--	--	--	--	--	--	--	--	--	--	--	--	--	--
4	--	--	--	--	--	--	--	--	--	--	--	--	--	--	--	--
5	--	--	--	--	--	--	--	--	--	--	--	--	--	--	--	--
6	-	--	--	--	--	--	--	--	--	--	--	--	--	--	--	--
7	--	--	--	--	--	--	--	--	--	--	--	--	--	--	--	--
8	--	--	--	--	-	--	--	--	--	--	--	--	--	--	--	--
9	--	--	--	--	-	--	--	--	--	--	--	--	--	--	--	--
Criteria	<b>B</b>								<b>B</b>							
Result	<b>A</b>								<b>A</b>							
Judgment	<b>PASS</b>								<b>PASS</b>							

Mode	HCP Discharge								VCP Discharge							
	2KV		4KV		6KV		8KV		2KV		4KV		6KV		8KV	
Location	P	N	P	N	P	N	P	N	P	N	P	N	P	N	P	N
1	-	--	A	A	--	--	--	--	-	--	A	A	--	--	--	--
2	--	--	A	A	--	--	--	--	--	--	A	A	--	--	--	--
3	--	--	A	A	-	--	--	--	--	--	A	A	-	--	--	--
4	-	--	A	A	--	--	--	--	-	--	A	A	--	--	--	--
Criteria	<b>B</b>								<b>B</b>							
Result	<b>A</b>								<b>A</b>							
Judgment	<b>PASS</b>								<b>PASS</b>							

Note:

- 1) P/N denotes the Positive/Negative polarity of the output voltage.
- 2) Test condition:  
 Direct discharges: Minimum 50 times (Positive/Negative) at each point.    Air discharges / Indirect (HCP/VCP): Minimum 20 times (Positive/Negative) at each point.
- 3) Test location(s) in which discharge (Air and contact discharge) to be described as following
- 4) The Indirect (HCP/VCP) discharges description of test point as following:  
 1.left side 2.right side 3.front side 4.rear side
- 5) N/A - denotes test is not applicable in this test report
- 7) Criteria B: The EUT function loss during the test, but self-recoverable after the test.

Test location description:

No	Description	No	Description
1	Slot            2points	4	
2	Output          4points	5	
3	Metal           2points	6	

## 4.5 RS TESTING

### 4.5.1 TEST SPECIFICATION

<b>Basic Standard:</b>	IEC 61000-4-3
<b>Required Performance</b>	A
<b>Frequency Range:</b>	80 MHz - 1000 MHz; 1.4 GHz – 6.0 GHz
<b>Field Strength:</b>	3 V/m
<b>Modulation:</b>	1kHz Sine Wave, 80%, AM Modulation
<b>Frequency Step:</b>	1 % of fundamental
<b>Polarity of Antenna:</b>	Horizontal and Vertical
<b>Test Distance:</b>	3 m
<b>Antenna Height:</b>	1.5 m
<b>Dwell Time:</b>	at least 3 seconds

### 4.5.2 MEASUREMENT INSTRUMENTS

Item	Kind of Equipment	Manufacturer	Type No.	Serial No.	Calibrated until
1	Signal Generator	Agilent	N517113-50B	MY53050160	2021-10-16
2	Amplifier	A&R	150W1000M3	313157	2021-10-16
3	Amplifier	A&R	50SIG6M2	0342835	2021-10-16
4	Log-periodic Antenna	SCHWARZBECK	STLP 9128E	9128E-012	2021-06-16
5	Microwave log-periodic antenna	SCHWARZBECK	STLP 9149	9149.222	2021-12-12
6	Isotropic Field Probe	A&R	FL700	0342652	2021-10-08
7	10 meter anechoic chamber	Albatross	10m	/	2021-10-16

Remark: " N/A" denotes No Model No. / Serial No. and No Calibration specified.

### 4.5.3 TEST PROCEDURE

The EUT and support equipment, which are placed on a table that is 0.8 meter above ground and the testing was performed in a fully-anechoic chamber.

The testing distance from antenna to the EUT was 3 meters.

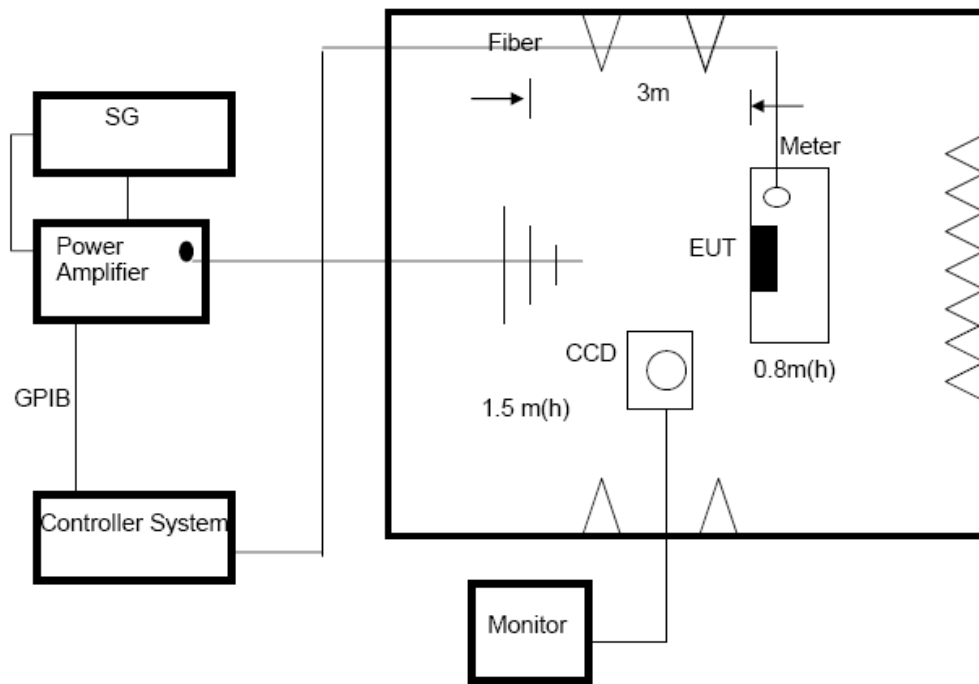
The other condition as following manner:

- a. The field strength level was 3V/m.
- b. The frequency range is swept from 80 MHz to 1000 MHz and 1800 MHz, 2600 MHz, 3500 MHz, 5000 MHz, with the signal 80%amplitude modulated with a 1kHz sine wave. The rate of sweep did not exceed  $1.5 \times 10^{-3}$  decade/s. Where the frequency range is swept incrementally, the step size was 1% of fundamental.
- c. The dwell time at each frequency shall be not less than the time necessary for the EUT to be able to respond.
- d. The test was performed with the EUT exposed to both vertically and horizontally polarized fields on each of the four sides.
- e. For the actual test configuration, please refer to the related Item –EUT Test Photos.

### 4.5.4 DEVIATION FROM TEST STANDARD

No deviation

**4.5.5 TEST SETUP**



Note:

**TABLE-TOP EQUIPMENT**

The EUT installed in a representative system as described in section 7 of IEC/EN 61000-4-3 was placed on a non-conductive table 0.8 meters in height. The system under test was connected to the power and signal wire according to relevant installation instructions.

**FLOOR-STANDING EQUIPMENT**

The EUT installed in a representative system as described in section 7 of IEC/EN 61000-4-3 was placed on a non-conductive wood support 0.1 meters in height. The system under test was connected to the power and signal wire according to relevant installation instructions.

**4.5.6 TEST RESULTS**

Frequency Range (MHz)	Polarity of Antenna	R.F. Field Strength	Azimuth	Perform. Criteria	Results	Judgment
80MHz - 1000MHz	H / V	3 V/m (rms) AM Modulated 1000Hz, 80%	Front	A	A	PASS
			Rear			
			Left			
			Right			

Frequency Range (MHz)	Polarity of Antenna	R.F. Field Strength	Azimuth	Perform. Criteria	Results	Judgment
1.4GHz – 6.0GHz	H / V	3 V/m (rms) AM Modulated 1000Hz, 80%	Front	A	A	PASS
			Rear			
			Left			
			Right			

**Note:**

- 1) H/V denotes the Horizontal/Vertical polarity of Antenna.
- 2) N/A - denotes test is not applicable in this test report.
- 3) Criteria A: There was no change operated with initial operating during the test.
- 4) Criteria B: The EUT function loss during the test, but self-recoverable after the test.
- 5) Criteria C: The system shut down during the test.

**4.6 EFT/BURST TESTING**

**4.6.1 TEST SPECIFICATION**

<b>Basic Standard:</b>	IEC 61000-4-4
<b>Required Performance</b>	B
<b>Test Voltage:</b>	Power Line: $\pm 1$ kV
<b>Polarity:</b>	Positive & Negative
<b>Impulse Frequency:</b>	5 kHz or 100 kHz
<b>Impulse Wave shape :</b>	5/50 ns
<b>Burst Duration:</b>	15 ms
<b>Burst Period:</b>	300 ms
<b>Test Duration:</b>	Not less than 1 min.

**4.6.2 MEASUREMENT INSTRUMENTS**

Item	Kind of Equipment	Manufacturer	Type No.	Serial No.	Calibrated until
1	Electrical Intelligent Transient Generator	Everfine	EMS61000-4B	G114921CA1341115	2021-05-23

Remark: " N/A" denotes No Model No. / Serial No. and No Calibration specified.

**4.6.3 TEST PROCEDURE**

The EUT and support equipment, are placed on a table that is 0.8 meter above a metal ground plane measured 1m\*1m min. and 0.65mm thick min.

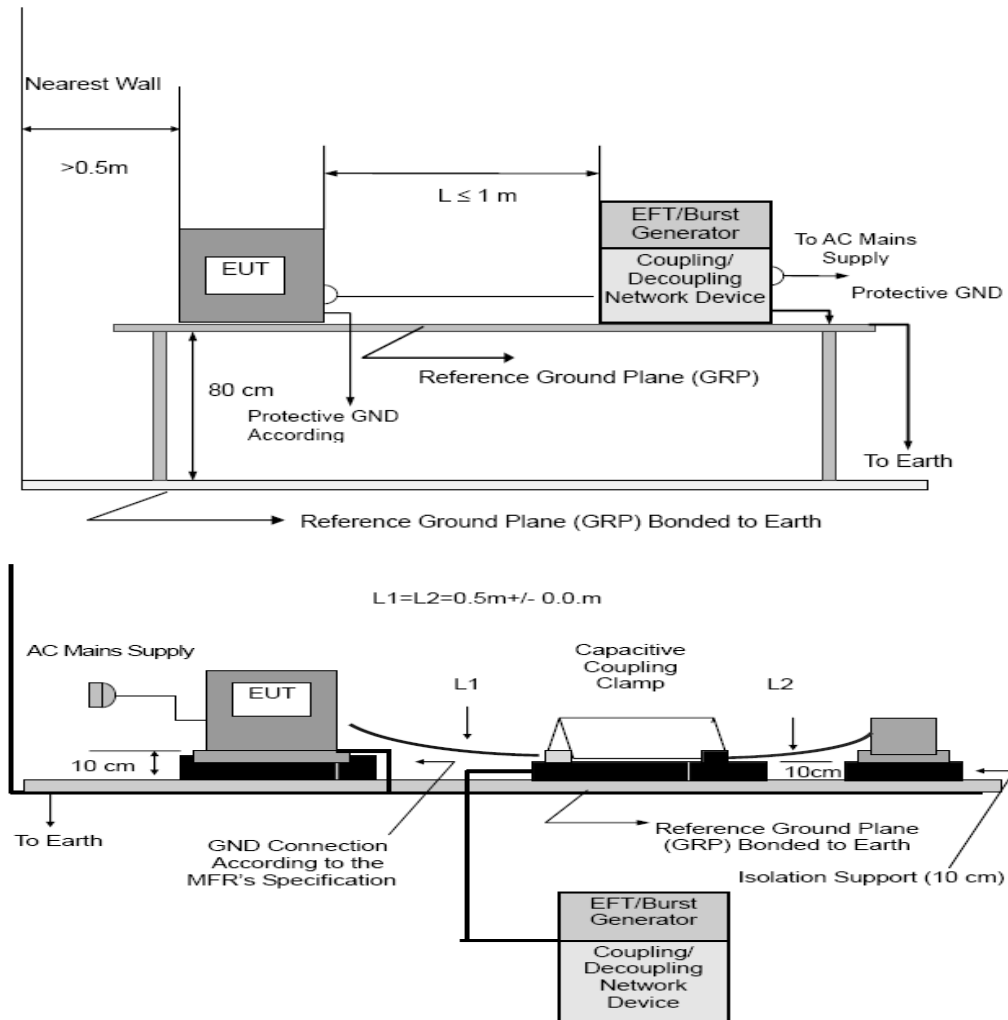
The other condition as following manner:

- a. The length of power cord between the coupling device and the EUT should not exceed 1 meter.
- b. Both positive and negative polarity discharges were applied.
- c. The duration time of each test sequential was 1 minute
- d. For the actual test configuration, please refer to the related Item –EUT Test Photos.

**4.6.4 DEVIATION FROM TEST STANDARD**

No deviation

**4.6.5 TEST SETUP**



Note:

**TABLE-TOP EQUIPMENT**

The configuration consisted of a wooden table (0.8m high) standing on the Ground Reference Plane. The GRP consisted of a sheet of aluminum (at least 0.25mm thick and 2.5m square) connected to the protective grounding system. A minimum distance of 0.5m was provided between the EUT and the walls of the laboratory or any other metallic structure.

**FLOOR-STANDING EQUIPMENT**

The EUT installed in a representative system as described in section 7 of IEC/EN 61000-4-4 and its cables, were isolated from the Ground Reference Plane by an insulating support that is 0.1-meter thick. The GRP consisted of a sheet of aluminum (at least 0.25mm thick and 2.5m square) connected to the protective grounding system.

**4.6.6 TEST RESULTS**

No applicable the DC product.

**4.7 SURGE TESTING**

**4.7.1 TEST SPECIFICATION**

<b>Basic Standard:</b>	IEC/EN 61000-4-5
<b>Required Performance</b>	B
<b>Wave-Shape:</b>	Combination Wave 1.2/50 us Open Circuit Voltage 8 /20 us Short Circuit Current
<b>Test Voltage:</b>	Power Line: $\pm 0.5KV, \pm 1 KV, \pm 2KV, \pm 4KV,$
<b>Surge Input/Output:</b>	L-N, L-PE, N-PE
<b>Generator Source:</b>	2 ohm between networks
<b>Impedance:</b>	12 ohm between network and ground
<b>Polarity:</b>	Positive/Negative
<b>Phase Angle:</b>	0 /90/180/270
<b>Pulse Repetition Rate:</b>	1 time / min. (maximum)
<b>Number of Tests:</b>	5 positive and 5 negative at selected points

**4.7.2 MEASUREMENT INSTRUMENTS**

Item	Kind of Equipment	Manufacturer	Type No.	Serial No.	Calibrated until
1	EMC Immunity Test System	Prima	SUG61005CX	PR13065597	2021-05-23

Remark: " N/A" denotes No Model No. / Serial No. and No Calibration specified.

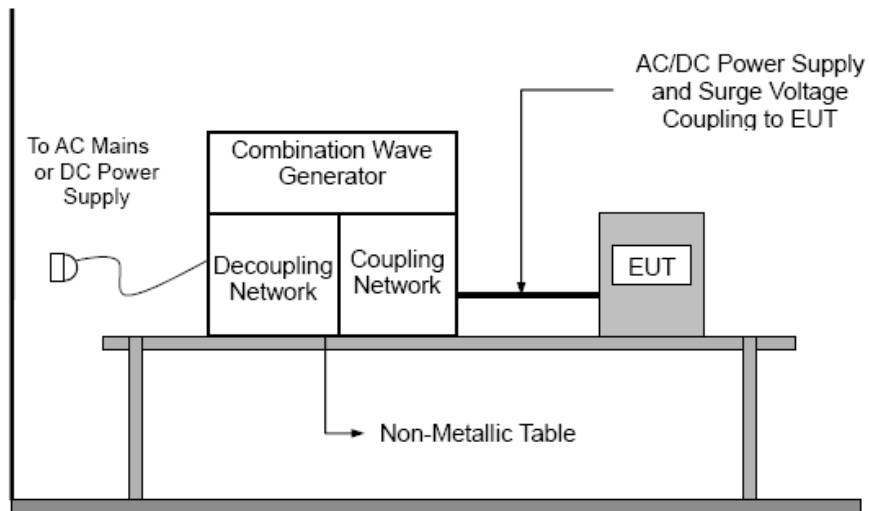
**4.7.3 TEST PROCEDURE**

- a. For test applied to unshielded unsymmetrically operated interconnection lines of EUT:  
The surge is applied to the lines via the capacitive coupling. The coupling /decoupling networks shall not influence the specified functional conditions of the EUT. The interconnection line between the EUT and the coupling/decoupling networks shall be 2 meters in length (or shorter).
- b. For test applied to unshielded symmetrically operated interconnection /telecommunication lines of EUT:  
The surge is applied to the lines via gas arrestors coupling. Test levels below the ignition point of the coupling arrestor cannot be specified. The interconnection line between the EUT and the coupling/decoupling networks shall be 2 meters in length (or shorter).
- c. For the actual test configuration, please refer to the related Item –EUT Test Photos.

#### 4.7.4 DEVIATION FROM TEST STANDARD

No deviation

#### 4.7.5 TEST SETUP



#### 4.7.6 TEST RESULTS

No applicable the DC product.

**4.8 INJECTION CURRENT TESTING**

**4.8.1 TEST SPECIFICATION**

<b>Basic Standard:</b>	IEC/EN 61000-4-6
<b>Required Performance</b>	A
<b>Frequency Range:</b>	3V (rms), 0.15MHz ~ 80MHz;
<b>Field Strength:</b>	3V (rms)
<b>Modulation:</b>	1kHz Sine Wave, 80%, AM Modulation
<b>Frequency Step:</b>	1 % of fundamental
<b>Dwell Time:</b>	at least 3 seconds

**4.8.2 MEASUREMENT INSTRUMENTS**

Item	Kind of Equipment	Manufacturer	Type No.	Serial No.	Calibrated until
1	CONDUCTED IMMUNITY TEST SYSTEM	FRANKONIA	CIT-10	102D1253	2021-10-16
2	CDN	FRANKONIA	CDN M2+M3	A3011059	2021-10-16
3	Electromagnetic clamp	FRANKONIA	KEMZ-801	21044	2021-10-16

Remark: " N/A" denotes No Model No. / Serial No. and No Calibration specified.

**4.8.3 TEST PROCEDURE**

The EUT and support equipment, are placed on a table that is 0.8 meter above a metal ground plane measured 1m\*1m min. and 0.65mm thick min.

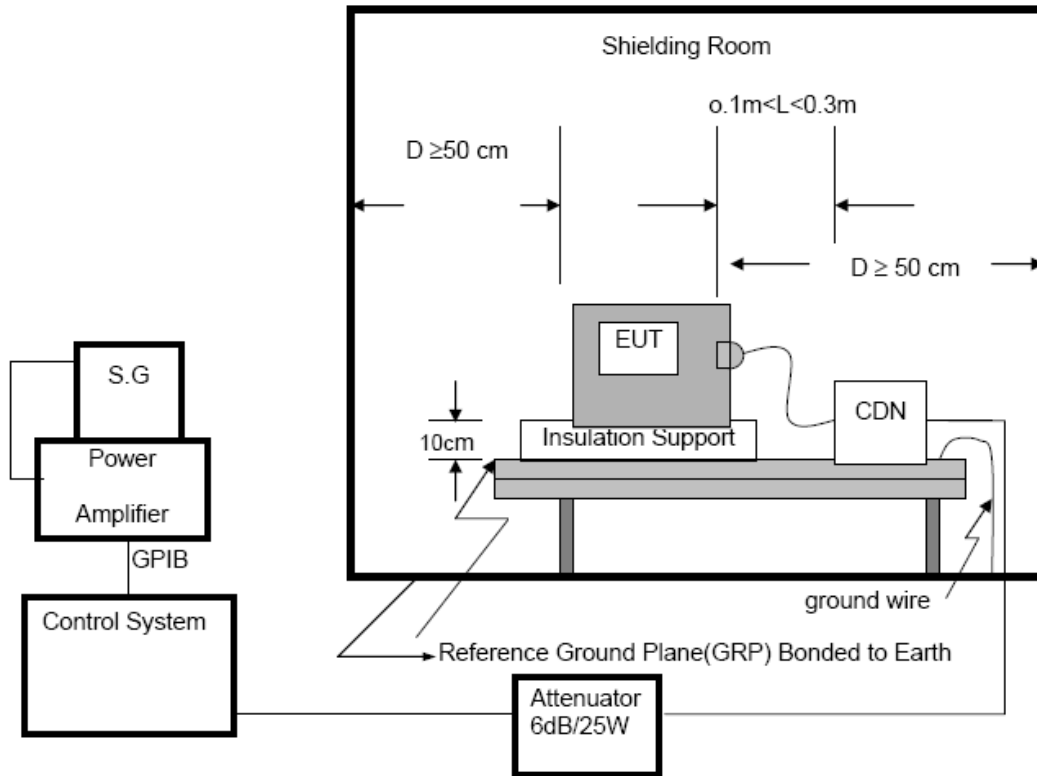
The other condition as following manner:

- a. The field strength level was 3V (rms), 3V ~1V (rms), 1V (rms).
- b. The frequency range is swept from 150 KHz to 80 MHz, with the signal 80%amplitude modulated with a 1kHz sine wave. The rate of sweep did not exceed  $1.5 \times 10^{-3}$  decade/s. Where the frequency range is swept incrementally, the step size was 1% of fundamental.
- c. The dwell time at each frequency shall be not less than the time necessary for the EUT to be able to respond.
- d. For the actual test configuration, please refer to the related Item –EUT Test Photos.

**4.8.4 DEVIATION FROM TEST STANDARD**

No deviation

**4.8.5 TEST SETUP**



For the actual test configuration, please refer to the related Item –EUT Test Photos.

**NOTE:**

**FLOOR-STANDING EQUIPMENT**

The equipment to be tested is placed on an insulating support of 0.1 meters height above a ground reference plane. All relevant cables shall be provided with the appropriate coupling and decoupling devices at a distance between 0.1 meters and 0.3 meters from the projected geometry of the EUT on the ground reference plane.

**4.8.6 TEST RESULTS**

No applicable the DC product.

#### 4.9 VOLTAGE INTERRUPTION/DIPS TESTING

##### 4.9.1 TEST SPECIFICATION

<b>Basic Standard:</b>	IEC 61000-4-11
<b>Required Performance:</b>	B (For >0% Voltage Dips) C (For >70% Voltage Interruptions)
<b>Test Duration Time:</b>	Minimum three test events in sequence
<b>Interval between Event:</b>	Minimum ten seconds
<b>Phase Angle:</b>	0°
<b>Test Cycle:</b>	3 times

##### 4.9.2 MEASUREMENT INSTRUMENTS

Item	Kind of Equipment	Manufacturer	Type No.	Serial No.	Calibrated until
1	Voltage Dips And Interruptions Generator	Everfine	EMS61000-11K	G113317CA8341 117	2021-05-23

Remark: " N/A" denotes No Model No. / Serial No. and No Calibration specified.

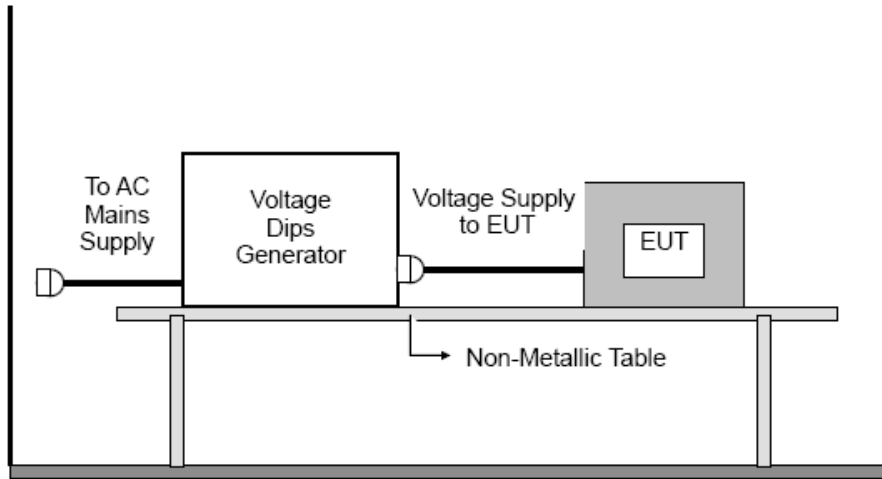
##### 4.9.3 TEST PROCEDURE

The EUT shall be tested for each selected combination of test levels and duration with a sequence of three dips/interruptions with intervals of 10 s minimum (between each test event). Each representative mode of operation shall be tested. Abrupt changes in supply voltage shall occur at zero crossings of the voltage waveform.

##### 4.9.4 DEVIATION FROM TEST STANDARD

No deviation

#### 4.9.5 TEST SETUP



For the actual test configuration, please refer to the related Item –EUT Test Photos.

#### 4.9.6 TEST RESULTS

No applicable the DC product.

**4.10 POWER-FREQUENCY MAGNETIC FILDS**

**4.10.1 MEASUREMENT INSTRUMENTS**

Item	Kind of Equipment	Manufacturer	Type No.	Serial No.	Calibrated until
1	Magnetic Field Tester	EMC-PARTNER	MF1000-1	121	2021-10-08

Remark: " N/A" denotes No Model No. / Serial No. and No Calibration specified.

**4.10.2 TEST LEVEL AND PERFORMANCE CRITERION**

Level	Magnetic Field Strength A/m	Performance criterion
1	3	A

Performance criteria A description: During and after the test the EUT shall continue to operate as intended without operator intervention. No degradation of performance or loss of function is allowed below a minimum performance level specified by the manufacturer when the EUT is used as intended

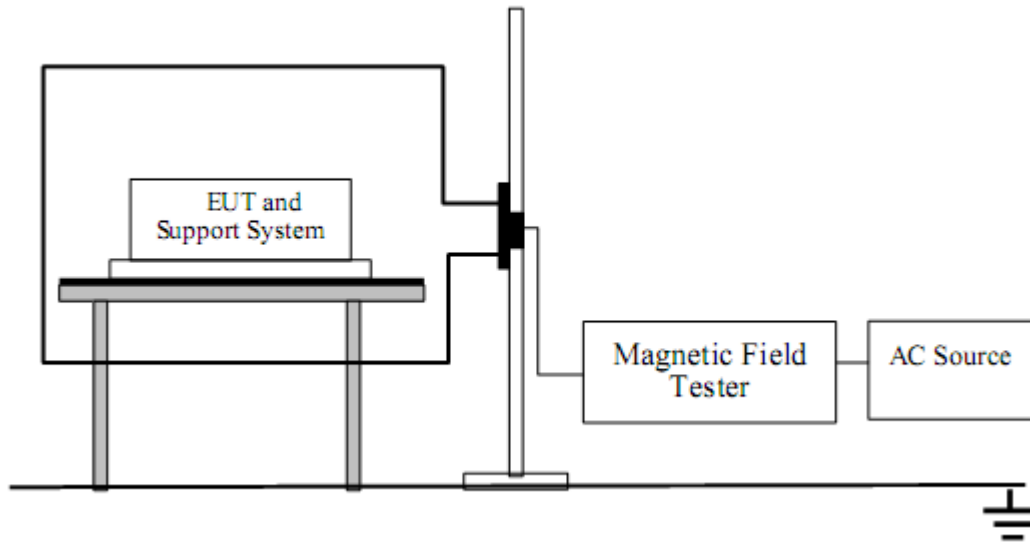
**4.10.3 TEST PROCEDURE**

The EUT shall be subjected to the test magnetic field by using the induction coil of standard dimensions (1m\*1m) and shown in Section 13.3 The induction coil shall then be rotated by 90 ein order to expose the EUT to the test field with different orientations. .

**4.10.4 DEVIATION FROM TEST STANDARD**

No deviation

**4.10.5 TEST SETUP**



**4.10.6 TEST RESULTS**

Operation Mode	Test Level	Testing Duration	Coil Orientation	Required	Observation	Result (Pass/Fail)
Charging, Discharging	3A/m	5 min / coil	X	A	A	Pass
	3A/m	5 min / coil	Y	A	A	Pass
	3A/m	5 min / coil	Z	A	A	Pass

Note:

Operation as intend, no loss of function during test and after test

**5. ATTACHMENT**  
5.1 EUT TEST PHOTO

**Radiated Measurement Photo**



**ESD Measurement Photos**



5.2 EUT PHOTO



Figure 1. Overall view of unit



Figure 2. Overall view of unit



Figure 3. Inside view of unit



Figure 4. Inside view of unit

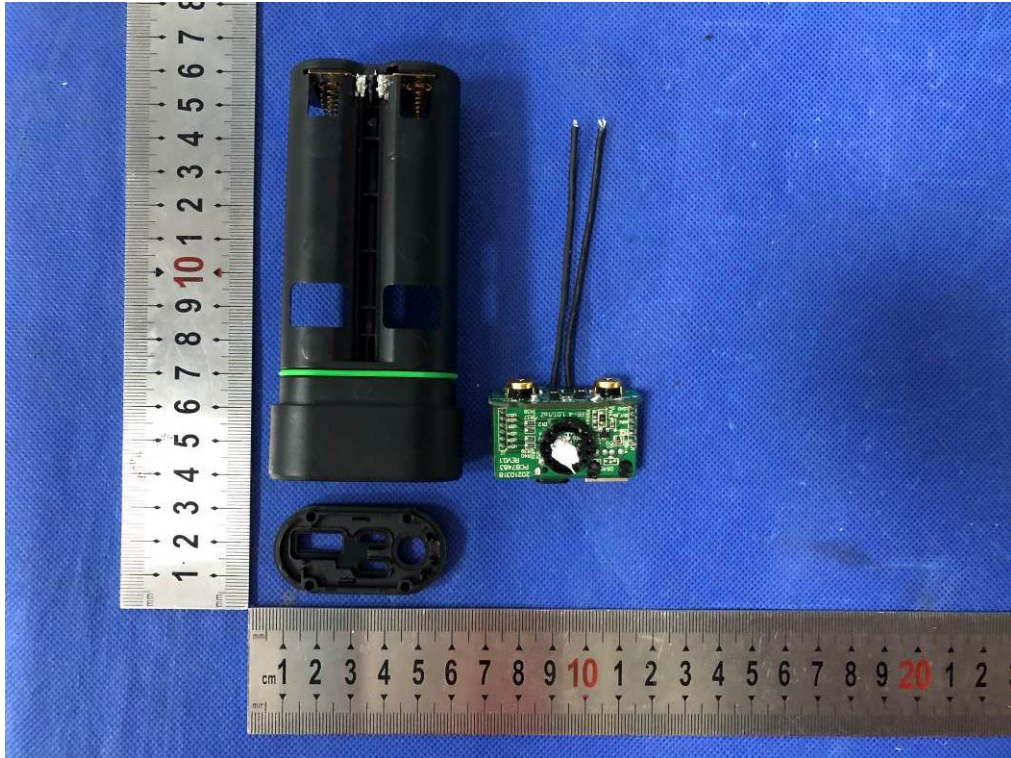


Figure 5. Inside view of unit

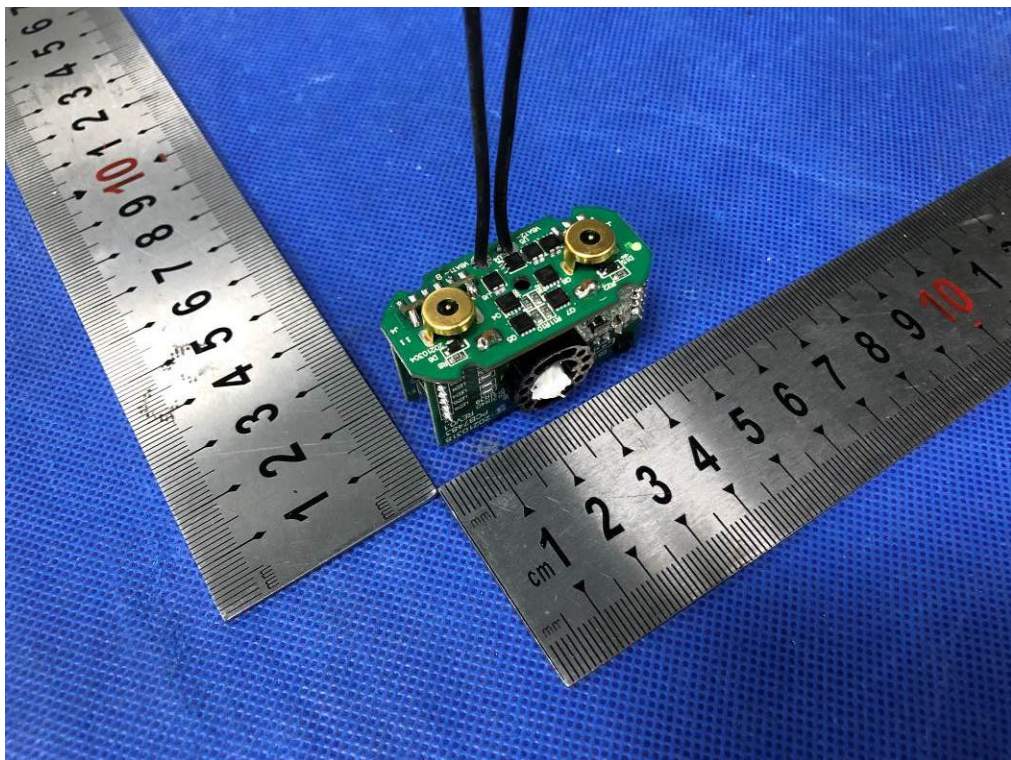


Figure 6. Inside view of unit

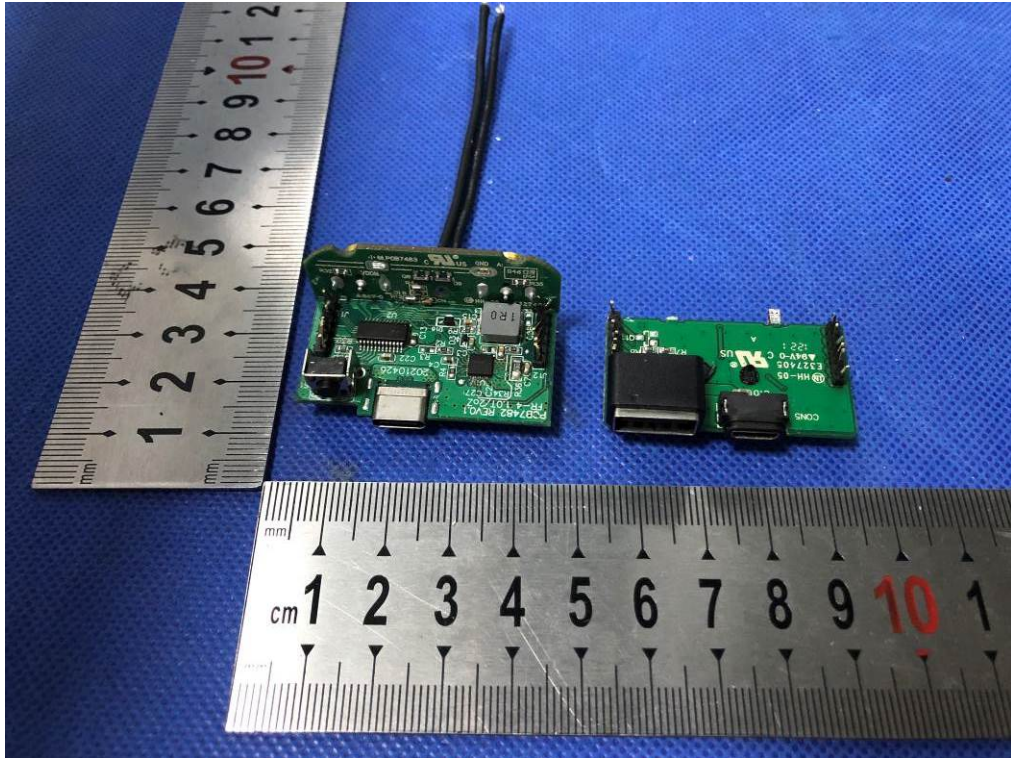


Figure 7. Top view of PCB

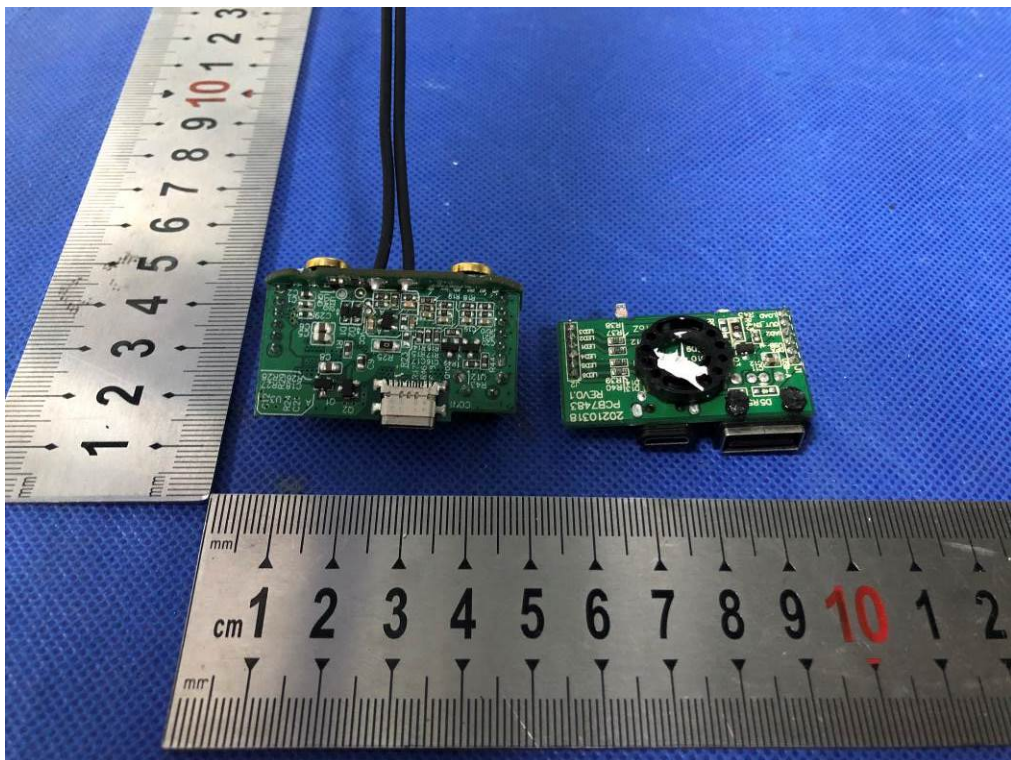


Figure 8. Bottom view of PCB

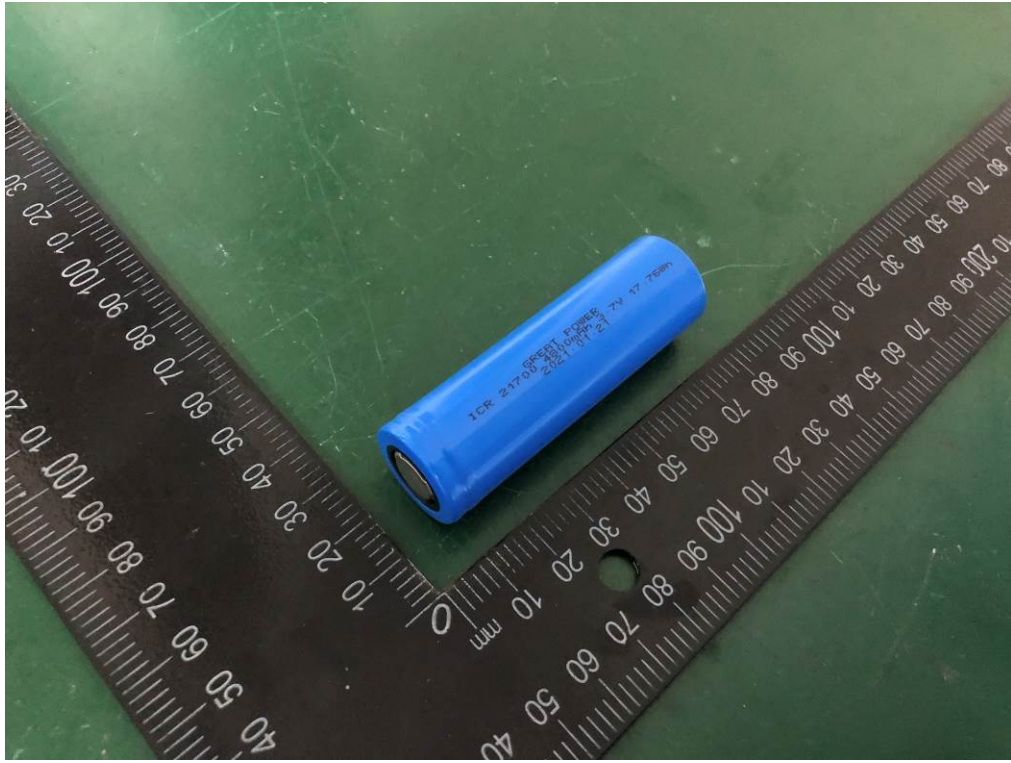


Figure 9. Overall view of battery

\*\*\*\*\* End of Page \*\*\*\*\*