



Technical Data Sheet

Stand: 09/2018

Seite: 1 von 1

Main Line Branch Terminals

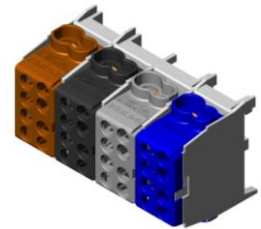
Hlak 25 2/4-S, Hlak 25-2/4-25-S

Hlak 25 3/6-S, Hlak 25-3/6-25-S

Hlak 25 4/8-S, Hlak 25-4/8-25-S

Hlak 25 5/10-S, Hlak 25-5/10-25-S

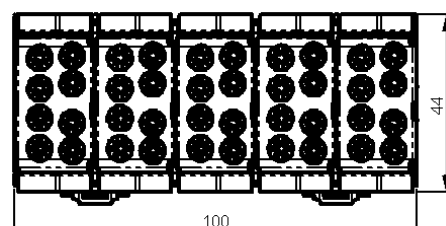
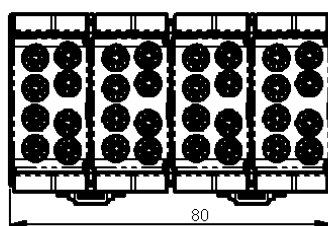
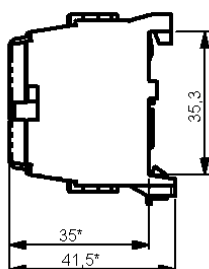
extensible by Hlak "M-Type"



Application	Terminal blocks to be DIN rail mounted. Mainly used for domestic applications between main line connection box and metering unit.
Standards	VDE 0603-2 distribution boards and meter panels - AC 400 V - Main line branch terminals EN/IEC 60998, Connecting devices for low-voltage circuits for household and similar purposes EN/IEC 60947-7-1 Low-voltage switchgear and controlgear – Ancillary equipment
Materials	terminal base: brass – tin plated terminals screws: steel, zinc plated housing: nylon, impact resistant, flame retardant, halogen free colour codes: brown, black, grey, blue, green
Color Code of Covers	Standard: 3 units grey, 1 blue, 1 yellow-green "BSG" 1 unit each of brown, black, grey, blue, yellow-green "grau" all covers grey or acc. to customer needs
Connection: Cu: solid/stranded, fine stranded – ferrule Al: solid	line: 1,5 - 25 mm ² solid / stranded, 2,5 Nm 1,5 - 16 mm ² fine stranded – ferrule, 2,5 Nm load: 1,5 - 16 mm ² solid / stranded, 2 Nm 1,5 - 10 mm ² fine stranded – ferrule, 2 Nm strip length / ferrule: 16 mm box type terminal with two screws per connection, screws having slotted Z2 cross recess head, tightening torque 2.5 Nm
Ratings	VDE 0603: Cu: 80 A / 400 V EN 60998, EN 60947-7-1: Cu: 130 A Al: 100A, insulation voltage: 1000 V, (pollution degree 2, overvoltage category III)
Mounting	onto DIN rail TS 35/.. acc. to EN 50022 / EN 60715
Safety	terminal finger proof, edges rounded
Environment Protection	All materials and manufacturing processes comply with RoHS regulations.

Hlak 25-4/8-S

Hlak 25-5/10-S



*Types "/25" + 1 mm

Poles	4	5
Branch Lines	8 (2 per pole)	10 (2 per pole)