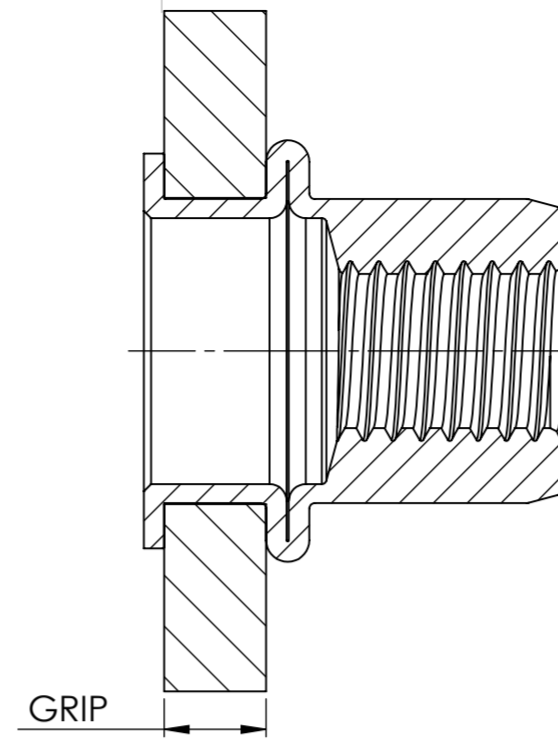
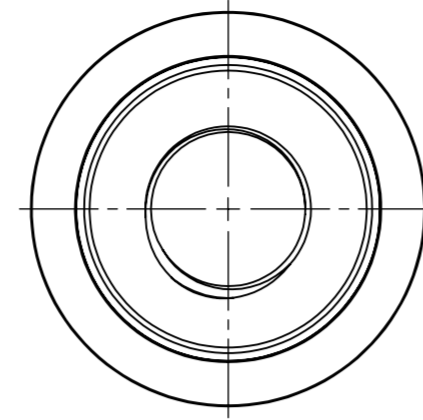
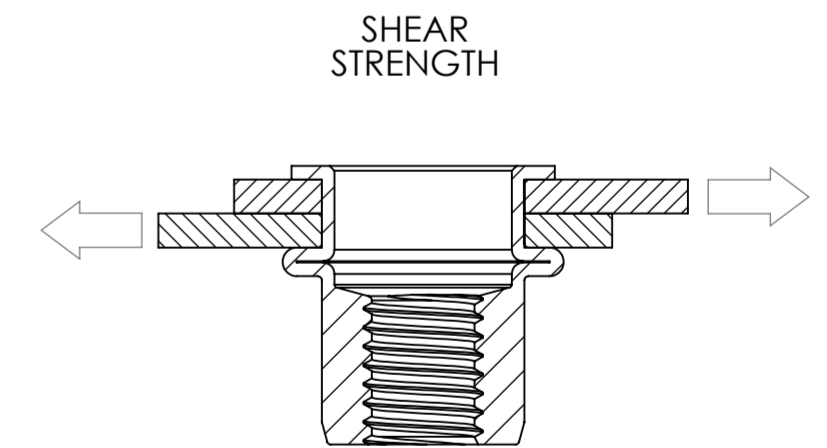
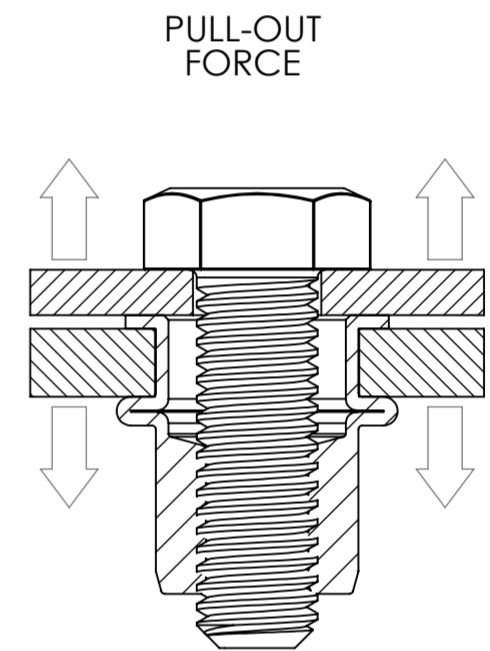
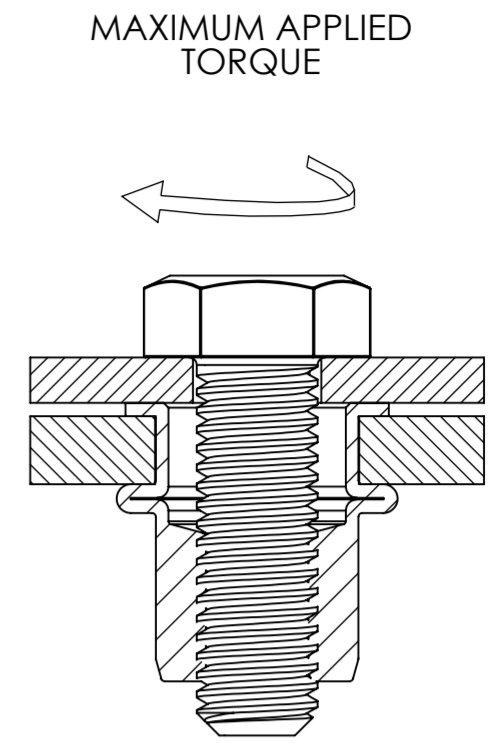
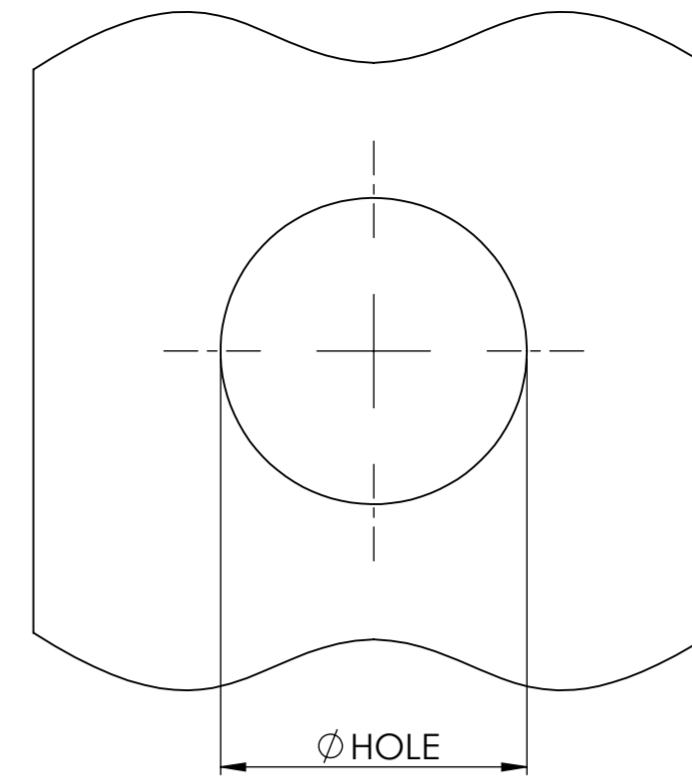


BEFORE PLACING



AFTER PLACING



THREAD SIZE	PART NUMBER	GRIP RANGE		Ø HOLE SIZE +0.1 -0.0	DIMENSIONS				PERFORMANCE (NOTE 1)		
		MIN.	MAX.		ØA +0.0 -0.2	ØB +0.0 -0.5	D +0.1 -0.1	M +0.5 -0.0	MAXIMUM APPLIED TORQUE (Nm)	PULL OUT FORCE (kN)	SINGLE SHEAR STRENGTH (kN)
M3	N20 M03 CO1	0.5	2.5	5.0	4.9	7.0	0.8	10.5	2.0	2.0	0.7
	N20 M03 CO2	2.5	3.5					11.5			
M4	N20 M04 CO1	0.5	3.0	6.0	5.9	9.0	1.0	11.0	4.0	2.8	1.0
	N20 M04 CO2	3.0	4.5					14.0			
M5	N20 M05 CO1	0.5	3.0	7.0	6.9	10.0	1.0	13.0	5.0	4.9	1.1
	N20 M05 CO2	3.0	5.5					16.0			
	N20 M05 CO3	5.5	8.0					19.0			
M6	N20 M06 CO1	0.5	3.0	9.0	8.9	12.0	1.5	16.0	11.0	9.3	2.2
	N20 M06 CO2	3.0	5.5					18.5			
	N20 M06 CO3	5.5	8.0					21.0			
M8	N20 M08 CO1	0.5	3.0	11.0	10.9	15.0	1.5	17.5	14.6	14.7	2.4
	N20 M08 CO2	3.0	5.5					20.0			
	N20 M08 CO3	5.5	8.0					22.5			
	N20 M08 CO4	8.0	10.5					25.0			
M10	N20 M10 CO1	0.5	3.0	12.0	11.9	16.0	2.0	19.0	19.9	21.5	3.8
	N20 M10 CO2	3.0	6.0					24.0			
	N20 M10 CO3	6.0	9.0					27.0			
	N20 M10 CO4	9.0	12.0					30.0			
M12	N20 M12 CO1	1.0	4.0	16.0	15.9	22.0	2.0	25.0	23.0	27.4	4.4
	N20 M12 CO2	4.0	7.0					28.0			
	N20 M12 CO3	7.0	10.0					31.0			

NOTES

- PULL OUT FORCE AND SHEAR STRENGTH VALUES ARE AS TESTED IN MAXIMUM GRIP AND ARE TYPICAL VALUES IN STEEL PLATE.
- MASTERGRIP IS A TRADE MARK OF STANLEY BLACK & DECKER, INC. AND ITS AFFILIATES.

PART DESCRIPTION	MASTERGRIP OPEN END RIVET NUTS LARGE FLANGE HEAD				PART NUMBER	SEE TABLE
LIMITS UNLESS STATED	DIMENSIONS IN mm UNLESS STATED ALL DIMENSIONS AND WEIGHTS ARE NOMINAL UNLESS LIMITS OR TOLERANCES ARE SPECIFIED				This document is the property of Avdel UK Limited and is issued on the express terms that it is to be treated as private and confidential and is not to be communicated to any other person. All patents, manufacturing and design rights are reserved by Avdel UK Limited.	
MATERIAL	ALUMINIUM 5056					
HEAT TREATMENT	ANNEALED					
FINISH	BRIGHT				LUBRICATION	NONE
DRAWN	DATE	ISSUE	A	A2	A3	Size: A2
LEL	23/6/2020	C.N.	20-154	24-036	24-084	Scale: 2:1
DRAWING DESCRIPTION	MASTERGRIP™ OPEN END SPLINED RIVET NUTS ALUMINIUM					Sheet: 1 OF 1
STANLEY Engineered Fastening	STANLEY Engineered Fastening 43 Hardwick Grange, Woolston, Warrington, England, WA1 4RF Registered in England: No. 315076			WEIGHT	-	DO NOT SCALE
	DRAWING NUMBER	N20-CO S			Revision: A3	