

BODY CRIMPED.
CRIMPING FLASH IS PERMISSIBLE.
CRIMP POSITION MAY VARY
ACCORDING TO RIVET DIAMETER OR LENGTH.

BEFORE PLACING

AFTER PLACING

RIVET SIZE	PART NUMBER	APPLICATION				DIMENSIONS						TYPICAL PERFORMANCE		MAXIMUM STEM BREAKLOAD kN.	
		GRIP RANGE		Ø HOLE SIZE		L +1.0 -0.2	ØA MAX.	ØB		D MAX.	ØE MAX.	N MIN.	SINGLE SHEAR kN.		TENSILE kN.
		MIN.	MAX.	MIN.	MAX.			MIN.	MAX.						
Ø3.2 (1/8")	R1002 3208	1.0	5.0	3.30	3.40	8.0	3.25	9.14	9.90	2.00	1.83	27	0.68	0.98	2.90
	R1002 3209	2.0	6.5			9.5									
	R1002 3210	2.5	7.0			10.0									
	R1002 3212	4.5	9.0			12.0									
	R1002 3214	6.5	11.0			14.0									
	R1002 3216	8.5	13.0			16.0									

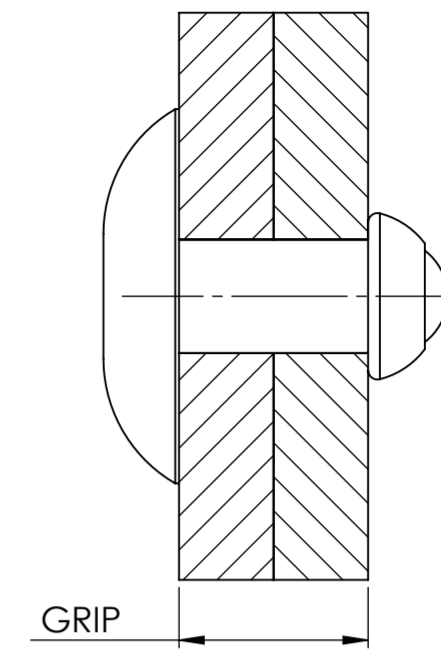
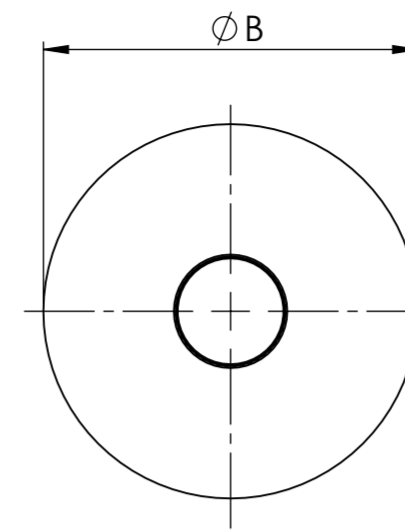
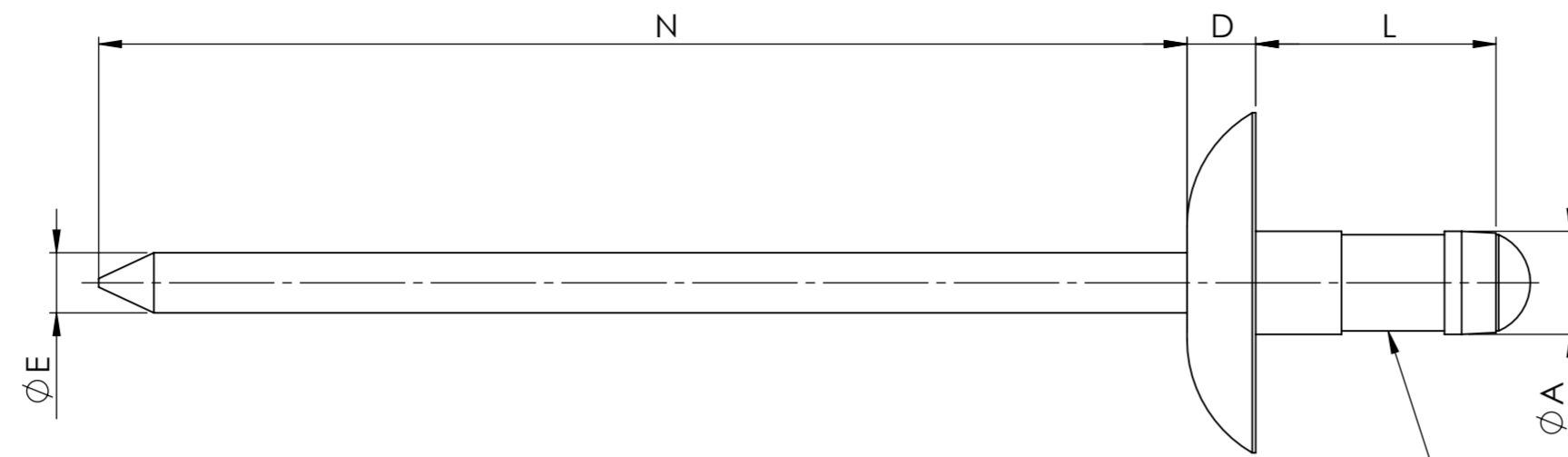
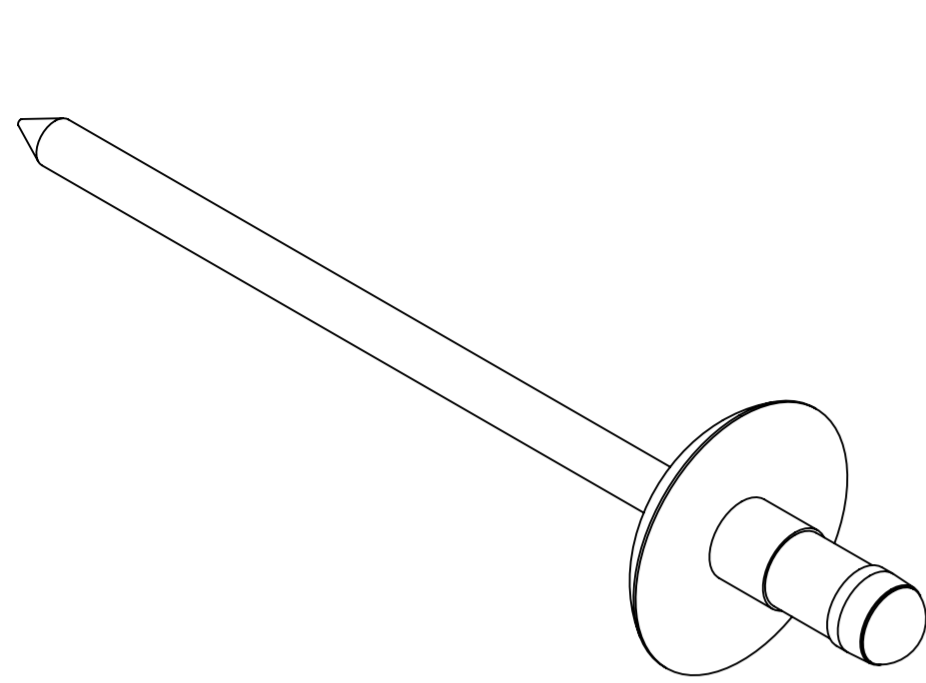
MATERIAL: BODY: ALUMINIUM AIMg 2.5
STEM: STEEL

SURFACE FINISH: BODY: NONE
STEM: ZINC PLATE & CLEAR Cr3 PASSIVATE

NOTES

PERFORMANCE VALUES AS TESTED IN HARDENED STEEL TEST PLATES.
PLIA IS A TRADE MARK OF STANLEY BLACK AND DECKER, INC. AND ITS AFFILIATES.

PART DESCRIPTION	PLIA ALUMINIUM LARGE HEAD STEEL STEM	PART NUMBER	SEE TABLE
DIMENSIONS IN mm UNLESS STATED		This document is the property of Avdel UK Limited and is issued on the express terms that it is to be treated as private and confidential and is not to be communicated to any other person. All patents, manufacturing rights, design rights and copyright are reserved by Avdel UK Limited.	
MATERIAL	SEE DRAWING		
HEAT TREATMENT	SEE DRAWING		
SURFACE TREATMENT	SEE DRAWING	LUBRICATION	SEE DRAWING
DRAWN	DATE	ISSUE	A
LEL	15/7/2020	C.N.	20-179
DRAWING DESCRIPTION	PLIA™ MULTIGRIP RIVETS ALUMINIUM	WEIGHT	-
STANLEY Engineered Fastening		DRAWING NUMBER	R1002 S
Avdel UK Limited 3 Europa Court Sheffield Business Park Sheffield, England, S9 1XE Registered in England: No. 315076		DO NOT SCALE	
		1 OF 2	
		Revision: A2	



BEFORE PLACING

BODY CRIMPED.
CRIMPING FLASH IS PERMISSIBLE.
CRIMP POSITION MAY VARY
ACCORDING TO RIVET DIAMETER OR LENGTH.

AFTER PLACING

RIVET SIZE	PART NUMBER	APPLICATION				DIMENSIONS						TYPICAL PERFORMANCE		MAXIMUM STEM BREAKLOAD kN.	
		GRIP RANGE		Ø HOLE SIZE		L +1.0 -0.2	ØA MAX.	ØB		D MAX.	ØE MAX.	N MIN.	SINGLE SHEAR kN.		TENSILE kN.
		MIN.	MAX.	MIN.	MAX.			MIN.	MAX.						
Ø4.0 (5/32")	R1002 4008	1.0	4.0	4.10	4.20	8.0	4.05	11.40	12.40	2.50	2.22	27	1.15	1.60	3.95
	R1002 4010	1.5	6.5			10.0									
	R1002 4011	2.5	7.5			11.1									
	R1002 4012	3.5	8.0			12.0									
	R1002 4013	4.0	9.0			12.7									
	R1002 4014	5.5	10.0			14.0									
	R1002 4016	7.5	12.0			16.0									
	R1002 4017	8.5	13.0			17.0									
	R1002 4018	9.4	14.0			18.0									
Ø4.8 (3/16")	R1002 4810	1.5	5.0	4.90	5.00	10.0	4.85	13.00	14.50	2.50	2.72	27	1.50	2.35	5.50
	R1002 4812	2.0	7.0			12.0									
	R1002 4816	6.0	11.0			16.0									
	R1002 4818	8.0	13.0			18.0									
	R1002 4820	10.0	15.0			20.0									

MATERIAL: BODY: ALUMINIUM A1Mg 2.5
STEM: STEEL

SURFACE FINISH: BODY: NONE
STEM: ZINC PLATE & CLEAR Cr3 PASSIVATE

NOTES

PERFORMANCE VALUES AS TESTED IN HARDENED STEEL TEST PLATES.
PLIA IS A TRADE MARK OF STANLEY BLACK AND DECKER, INC. AND ITS AFFILIATES.

PART DESCRIPTION	PLIA ALUMINIUM LARGE HEAD STEEL STEM						PART NUMBER	SEE TABLE			
DIMENSIONS IN mm UNLESS STATED							This document is the property of Avdel UK Limited and is issued on the express terms that it is to be treated as private and confidential and is not to be communicated to any other person. All patents, manufacturing rights, design rights and copyright are reserved by Avdel UK Limited.				
ALL DIMENSIONS AND WEIGHTS ARE NOMINAL UNLESS LIMITS OR TOLERANCES ARE SPECIFIED											
MATERIAL	SEE DRAWING										
HEAT TREATMENT	SEE DRAWING										
SURFACE TREATMENT	SEE DRAWING						LUBRICATION	SEE DRAWING			
DRAWN	DATE	ISSUE	A	A2	-	-	-	-	-	Size: A2	
LEL	15/7/2020	C.N.	20-179	21-135	-	-	-	-	-	Scale: 2:1	
DRAWING DESCRIPTION	PLIA™ MULTIGRIP RIVETS ALUMINIUM										
STANLEY Engineered Fastening							WEIGHT	-		DO NOT SCALE	2 OF 2
STANLEY Engineered Fastening Avdel UK Limited 3 Europa Court Sheffield Business Park Sheffield, England, S9 1XE Registered in England: No. 315076							DRAWING NUMBER	R1002 S			Revision: A2