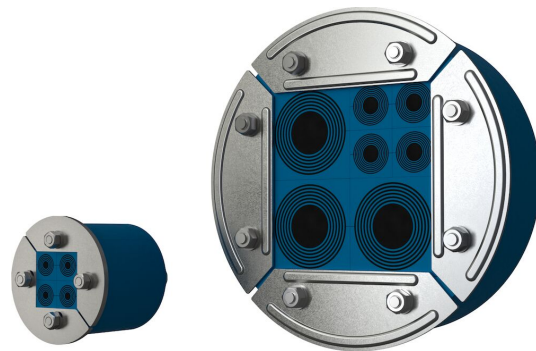




# Roxtec R-gennemføring

Rund anordning til tætning omkring flere kabler og rør i et begrænset areal.

Roxtec R er en kabel- og rørgennemføring til brug i rør-sleeves og runde huller. Komprimeringen er indbygget i rammen, så den tætnes ved udvidelse. Standardtætningsmodulerne kan tilpasses kabel- og rørstørrelser og kan bruges til indbygget reservekapacitet i gennemføringen. Nettet på bagsiden beskytter under vandret montering (ikke inkluderet i R 70 og R 75). Rammen kan skæres åben til montering omkring eksisterende kabler og rør.



- Pladsbesparende
- Nem at vedligeholde og inspicere

## Produktegenskaber



Brandklassificeret



Vandtæt



Gas-tæt

## Byggekonstruktion



Metal



Beton

## Monteringstype



Eksisterende åbning



Oprindeligt sleeve

## Normeringer og certifikater

### Brand

- A-KLASSE i henhold til IMO 2010 FTP-kode
- E/EI-klassificering i henhold til EN 13501
- E/EI-klassificering i henhold til EN 45545 E30
- F/T-klassificering i henhold til UL 1479
- H-KLASSE i henhold til IMO 2010 FTP-kode + HC-brandbelastningskurve

### Tæthed

- Gas: 2,5 bar (katastrofe)
- Vand: 4 bar (katastrofe)

## Rammedimensioner

### mm/kg

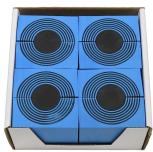
De nedenstående rammevarianter udgør et begrænset udvalg. Du kan se hele udvalget af rammer og konfigurationer på [roxtec.com](https://www.roxtec.com).

Title	Pakkeareal	Åbningsmål Ø	Vægt	Art.-nr.
R 50 AISI316	30 x 30	50 - 52	0.21	5R00000012875
R 75 AISI316	40 x 40	75 - 77	0.5	R000000751021
R 70 AISI316	40 x 40	70 - 72	0.45	R000000701021
R 100 AISI316	60 x 60	100 - 102	0.8	R000001001021
R 100 GALV	60 x 60	100 - 102	0.8	R000001001018
R 125 AISI316	80 x 80	125 - 127	1.1	R000001251021
R 125 GALV	80 x 80	125 - 127	1.1	R000001251018
R 127 AISI316	80 x 80	127 - 129	1.1	R000001271021
R 127 GALV	80 x 80	127 - 129	1.1	R000001271018
R 150 AISI316	90 x 90	150 - 152	1.6	R000001501021
R 150 GALV	90 x 90	150 - 152	1.6	R000001501018
R 200 AISI316	120 x 120	200 - 202	2.6	R000002001021
R 200 GALV	120 x 120	200 - 202	2.6	R000002001018



## Data om tætningskomponenter

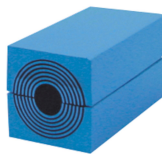
### Tætningskomponenter



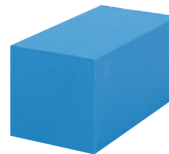
R-tætningskit



Lubrikant



RM-modul med Multidiameter™



RM fast kompensationsmodul

For merne information, besøg venligst [roxtec.com](https://www.roxtec.com).

The product information provided by Roxtec does not release the purchaser of the Roxtec system, or part thereof, from the obligation to independently determine the suitability of the products for the intended process, installation and/or use.

Roxtec gives no guarantee for the Roxtec system or any part thereof and assumes no liability for any loss or damage whatsoever, whether direct, indirect, consequential, loss of profit or otherwise, occurred or caused by the Roxtec systems or installations containing components not manufactured by an authorized manufacturer and/or occurred or caused by the use of the Roxtec system in a manner or for an application other than for which the Roxtec system was designed or intended.

Roxtec expressly excludes any implied warranties of merchantability and fitness for a particular purpose and all other express or implied representations and warranties provided by statute or common law. User determines suitability of the Roxtec system for intended use and assumes all risk and liability in connection therewith. In no event shall Roxtec be liable for indirect, consequential, punitive, special, exemplary or incidental damages or losses.

The Roxtec products are offered and sold in accordance with the conditions of the Roxtec General Terms of Sales. The latest version of the Roxtec General Terms of Sales can be downloaded from <https://www.roxtec.com/en/about-us/about-roxtec/general-terms-of-sales/>

We reserve the right to make changes to the product and technical information without further notice. Any errors in print or entry are no claims for indemnity. The content of this publication is the property of Roxtec International AB and is protected by copyright.

This document was generated on: 2024-06-17