

深圳市杰普特电子技术有限公司

Shenzhen JPT Electronics Co., Ltd.

Website: www.jptelectronics.com Email: sales@jptelectronics.com

SC Connector Series

1. Application

- Telecommunication System
- Testing Facility
- CATV System
- Long-haul Telecommunication
- LAN System



2. Features

- PC,UPC,APC polishing available
- High Return Loss
- Low Insertion Loss
- High Reliability and Stability
- Available for single mode / multimode and simplex / duplex
- 0.9mm ,2.0mm,3.0mm diameter cable available for Patch cords and Pigtails

3. Compliance

- Compliant with : IEC-61754-20
- Compliant with : Tecordia-GR-326-CORE
- Compliant with : RoHS

4. Specification

Fiber Mode	SM (G652D/G657A1/G657A2)			MM (OM1/OM2/OM3/OM3/OM4)
	Connector Type	SC		
Diameter (mm)	0.9mm / 1.8mm/ 2.0mm / 3.0mm...			
End-face Finishing	PC	UPC	APC	PC
Insertion Loss (dB)	≤0.30	≤0.30	≤0.30	≤0.30
Return Loss (dB)	≥45	≥50	≥60	≥35
Exchangeability (dB)	≤0.20			
Repeatability (dB)	≤0.20			
Operating Temperature(°C)	-40 ~ + 75			
Storage Temperature (°C)	-40 ~ + 85			
Operating Wavelength(um)	1310,1550			850
Cable material	PVC, LSZH			

Note: Contact our engineers for the parameter of high precision patch cord.

5. Cable

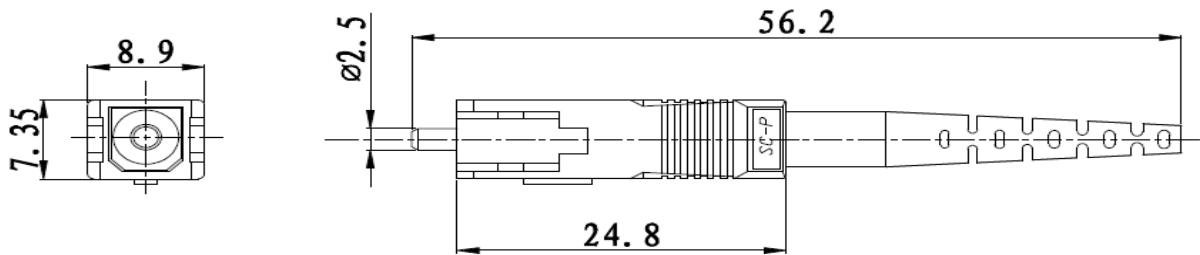
Lemvigh-Müller Normal	0.9mm	1.8mm	2.0mm	3.0mm
SM	White	Yellow		
MM	White	Orange		
OM3	Aqua			
OM4	Violet			

Note : I . All cable are LSZH. PVC or other material for option.

II . 12 colors would be available. (Blue, Orange, Green, Brown, Grey, White, Red, Black, Yellow, Violet, Pink, Aqua)

III . The other OD requirement could be discussed.

6. Dimensions



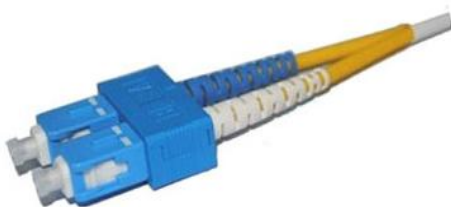
SC/PC SM SX



SC/PC MM SX



SC/APC SM SX



SC/PC SM DX



SC/PC MM DX



SC/APC SM DX