

SOFTWARE MANUAL

WAVE XS by CONLAN

The WAVE XS is touchless, securing high hygiene. The WAVE XS can be installed and used for many different purposes, e.g. as exit button to open a door, turn on the light, or call for an elevator - just a few among many other options.

Art.no. 480390 - WAVE XS Nordic, black
Art.no. 480391 - WAVE XS Nordic, white
Art.no. 480490 - WAVE XS European, black
Art.no. 480491 - WAVE XS European, white

www.conlan.eu

SOFTWARE MANUAL:
WAVE XS

CONLAN
A **SALTO** GROUP COMPANY

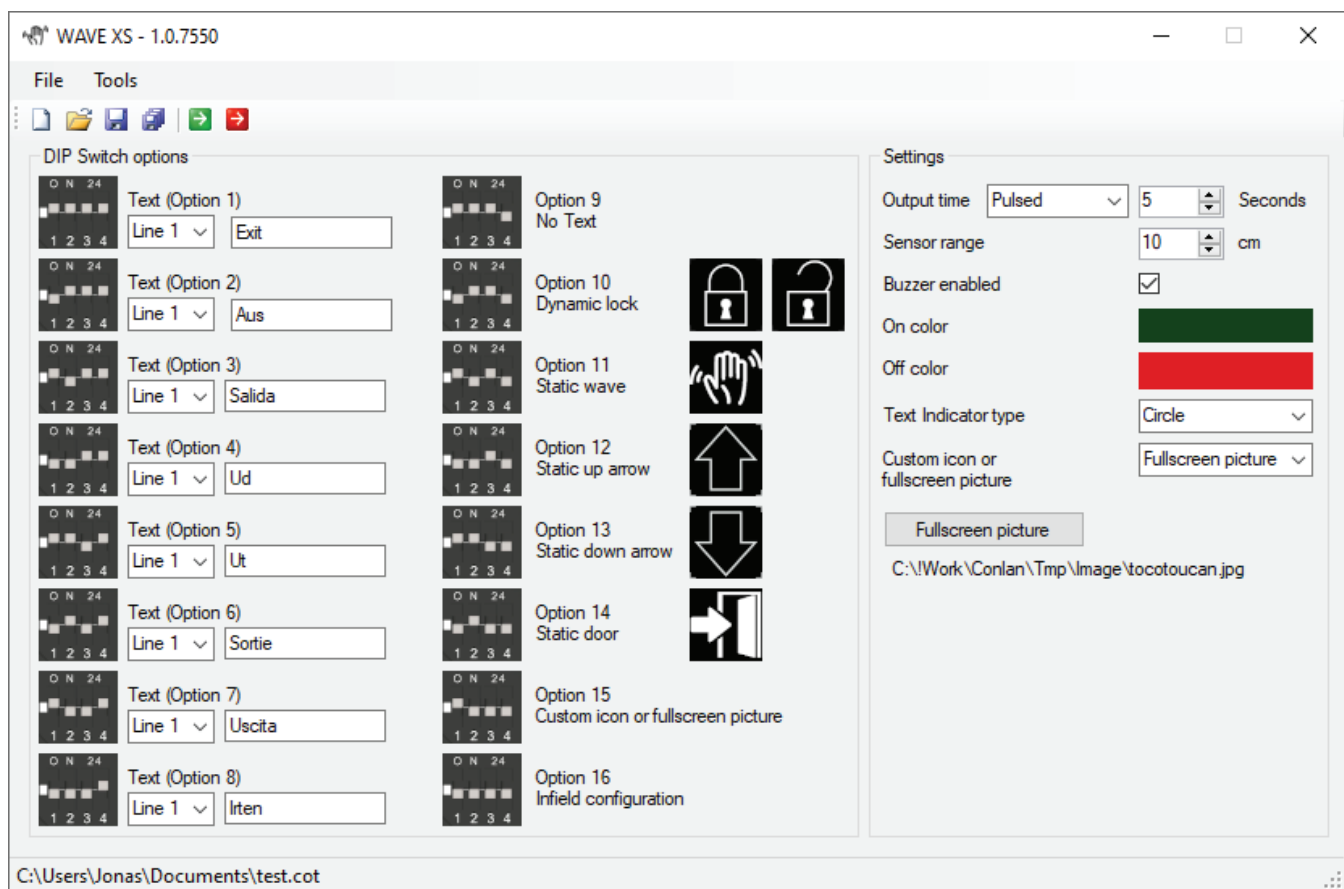




WAVE XS SOFTWARE

With the WAVE XS software you can be in full control of your design. Download and use the WAVE XS software if you want to upload your own picture or text to be shown on the display. The software can be downloaded free of charge on the CONLAN website under: www.conlan.eu/downloads

Besides the software you will need an interface to connect the reader with your PC. You can buy this directly from CONLAN (art.no. 460185).



As you can see in the picture above, the possibilities of customisation through the software are plenty.

Option 1-8 are text fields. Option 9 is for no text or icon. Option 10-14 contains 5 different icons that are already in the configuration. Option 15 gives you the opportunity to upload your own picture or icon. Option 16 is for on-site configuration of activation time and detection range.

Remember - If you want any of the existing configurations, simply adjust the dip switches according to the pictures to the left of the options. You will not need the software to make these changes.



CHOOSING YOUR DESIGN AND SETTINGS

TEXT

In any of the text fields (option 1-8) you can key in a text of your choosing with up to 3 lines of text. Choose the number of lines to the left of the text. After you have keyed in your text, set the dip switches on the WAVE XS according to the option in which you have made your changes.

PICTURE OR ICON

Under settings you can upload your own dynamic icon (100x100 px) or fullscreen picture (240x240 px). Set the dip switches as shown in option 15 to get the WAVE XS to show your uploaded picture.

TEXT INDICATOR

The text indicator can be either circular or rectangular. You can also choose the color of the text indicator, both the standard color and for when it is activated. Just note that if you choose the full screen picture, the text indicator will not be shown.

OTHER SETTINGS

Output time is the time of which WAVE XS stays activated after activation. Through the software you can turn the activation time from 1-240 seconds.

Sensor range is the range of which WAVE XS will detect activity. This can be set to between 1-25 cm.

You can also choose to turn the buzzer on or off.

Settings

Output time Pulsed 5 Seconds

Sensor range 10 cm

Buzzer enabled

On color


Off color

Text Indicator type Circle

Custom icon or fullscreen picture Fullscreen picture

Fullscreen picture

C:\Work\Conlan\Tmp\Image\tocotoucan.jpg

When you are done choosing your text, picture, or settings, configure the WAVE XS by clicking on the green arrow . It will hereafter be updated.