



LEDVANCE



HIGHEST FLEXIBILITY
THROUGH MODULAR SYSTEM

UP TO
175
lm/W

100 000 h
LIFETIME

5Y
GUARANTEE

TRUSYS FLEX TRUNKING SYSTEM

YOUR ALL-ROUNDER FOR MANY LIGHTING PROJECTS



TRUSYS FLEX

PERFOR-
MANCE
CLASS



EFFICIENT, VERSATILE,
EASY TO INSTALL

**THE MODULAR TRUNKING SYSTEM
FOR A VARIETY OF APPLICATIONS**

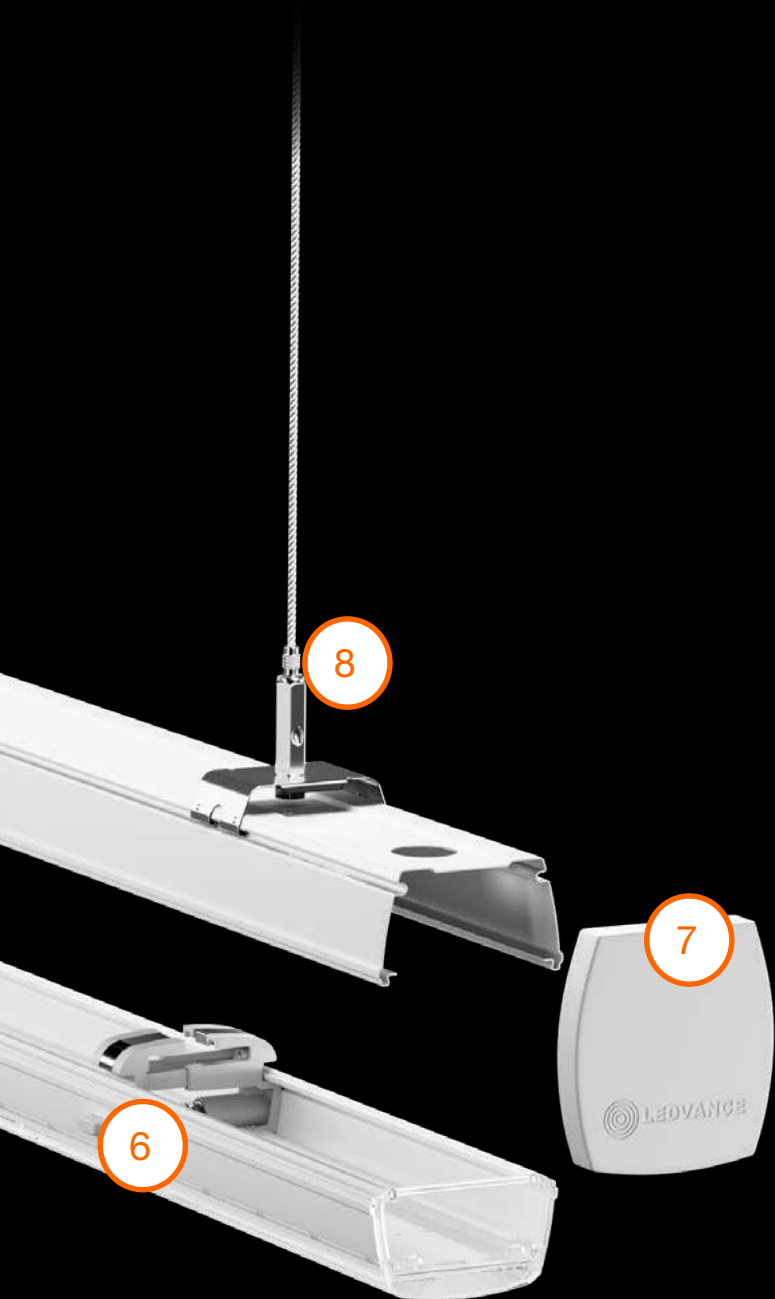
The highly efficient TRUSYS FLEX trunking system comes with numerous components that can be combined as needed, is easy to install and offers many different mounting options. All these features help it meet the specific requirements of many different applications, making it a real problem solver.

+ **FLEXIBLE:** ADAPTS TO DIFFERENT APPLICATION REQUIREMENTS

+ **ADAPTABLE LIGHTING:** DIVERSE BEAM ANGLES AND LUMEN OPTIONS

+ **MODULAR SYSTEM:** WIDE RANGE OF COMPONENTS

+ **COMPREHENSIVE SYSTEM:** EASY TO INSTALL



BREAKDOWN OF THE MAIN TRUSYS FLEX COMPONENTS

- 1 Energy Rail 1.5 m, 3 m or 4.5 m
- 2 TRUSYS FLEX LED module in 1.5 m length
- 3 Connector between Energy Rail and LED module
- 4 Control gear
- 5 Optical lens covers
- 6 Smart push button clip for easy mounting of LED module
- 7 End Cap
- 8 Suspension Kit



SEE FOR YOURSELF!

Just scan this QR code and check out:
ledvance.com/trusysflex-video



TRUSYS FLEX AT A GLANCE

COMPONENTS AND ACCESSORIES FOR CUSTOM CONFIGURATION

Thanks to its many different components, TRUSYS FLEX offers enormous flexibility for a variety of applications. At the same time, the modular system keeps the complexity of planning and ordering a customised installation configuration manageable.

MOUNTING

SUSPENSION KIT

Suspension for mounting energy rail



CHAIN KIT

Mounting brackets for chain suspension (chains not included)



SURFACE CLIPS



Use for direct surface mounting of energy rails

GRID CEILING BRACKETS



Use for surface mounting on grid ceilings



POWER

ENERGY RAIL/ END ENERGY RAIL



Energy rail in 5 and 8 pole

FEED-IN/OUT BOX



Feed-in and feed-out connector box in 5 and 8 pole

FEED-IN CONNECTOR



Feed-in connector for mounting rail in 5 and 8 pole

END CAPS FOR ENERGY RAIL



End caps for mounting on energy rail



INSERTS

TRUSYS FLEX LUMINAIRE



- On/Off, DALI and EM
- Beam angle: very wide (VW): 120°, wide (W): 90°, narrow (N): 60°, very narrow (VN): 30°, double symmetric (DS): 2 x 30°, wall washer (WW): 40°
- Light colour: 4,000 K, 6,500 K

BLIND COVER



Energy rail covers (for sections without luminaires). Separate side covers included.

INSERT ADAPTERS



SPOT TRACK
900 mm slidable track insert for mounting LEDVANCE TRACKSPOTS; up to 3 spots can be installed on a 1,500 mm rail section.



T5 TUBE SINGLE/DOUBLE INCL. REFLECTOR ACCESSORY
Rail insert for integrating T5 LED tubes (not included) into the trunking system; for one or two LED tubes, including optional side covers and reflector for extra wide beam angle shaping (130°).

Perfect addition:
Scan here for compatible LEDVANCE T5 LED tubes.



SENSOR TRACK
Rail insert for integrating a PIR sensor (MSensor G3 SFI 30, included) into the trunking system. With preinstalled wiring and optional side covers, available in 600 mm and 1,500 mm lengths.



CONFIGURATION ACCESSORIES

T, L & X NODES (OPTION TO CONTACT LDV FOR MORE DETAILED PLANNING)



L-Node



T-Node



X-Node

Steel-sheet connectors, through-wired with 5 or 8 pole wiring and with at least one feeder and one exiter for various multi-directional configuration options



DO YOU HAVE ANY QUESTIONS ABOUT TRUSYS FLEX? LET US KNOW.
We're happy to help you realise your individual TRUSYS FLEX project.
Get in touch at contact@ledvance.com

You can find further technical details of all TRUSYS FLEX components online:

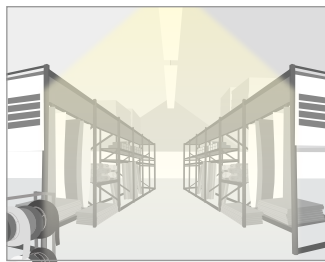
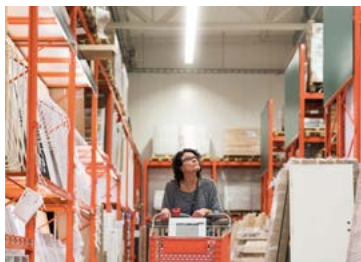


BEAM ANGLE SELECTION AS INDIVIDUAL AS YOUR DEMANDS



VERY WIDE (120°)

Very wide beam distribution for industry and warehouses, but open areas such as for loading and packing.



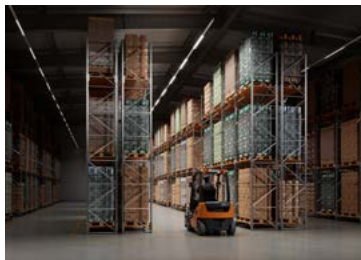
WIDE (90°)

Wide light distribution is particularly suitable for the homogeneous illumination of high spaces such as large hardware retailers.



NARROW (60°)

Narrow light distribution is ideal for medium height ceilings with medium heights racks such as storage rooms or warehouses that have shelving positioned closely together with narrow aisles.



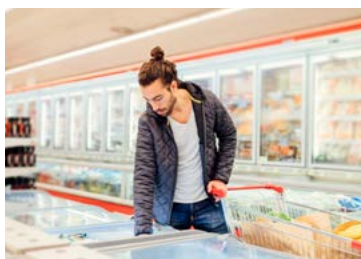
VERY NARROW (30°)

Very narrow light distribution for high heights such as high shelving positioned closely together with narrow aisles.



DOUBLE SYMMETRIC (2 × 30°)

The double symmetrical light distribution is recommended for uniform double-sided shelf lighting in walkways such as in supermarkets.



WALL WASHER (40°)

The oblique beam angle can be used to highlight walls and shelves, accentuate advertising images and shine the light in a particular direction such as in supermarket or grocery stores.

WHATEVER YOU WANT WE CAN DO IT

LEDVANCE PROJECT SERVICES: CONFIGURATION – PERSONALISATION – TECHNICAL DEVELOPMENT

Does a configuration from the TRUSYS FLEX modular system not meet the requirements for your project 100 %? Help is at hand through our LEDVANCE Project Services – from a slightly modified standard solution to a fully customised product. Together with our European partners, we even develop and deliver special solutions outside our range of services. The following example from the Netherlands shows you how well this works.



TAILOR-MADE LIGHTING SOLUTIONS

We develop lighting solutions that meet your requirements, whether it's housing colour, connections, installation or something completely different. Contact us: contact@ledvance.com

SMART LIGHT FOR HIGH-TECH DATA CENTRE ZIGGO, NETHERLANDS



THE CHALLENGE

To improve the quality of the light while saving CO₂ emissions and energy costs, the people in charge at the Ziggo data centre decided to take an ambitious step: switch from traditional lighting to LED technology.

THE SOLUTION

In cooperation with a partner, LEDVANCE implemented a lighting concept using the TRUSYS FLEX system. This involved equipping 600 metres of strip lighting with DALI-2 lighting units, covers and a TRUSYS FLEX mounting plate with sensors specially developed for the project by LEDVANCE Project Services. Controlled by two DALI-2 Pro IoT controllers, the system maximises energy efficiency and enables decentralised escape route lighting connected to LEDVANCE 8P energy rails. These have integrated DALI-2 sensors LS/PD CI for presence detection.



TRUSYS FLEX P
35W/4000K DALI

TRUSYS
FLEX RAIL 8P

OSRAM DALI PRO 2
IoT CONTROL

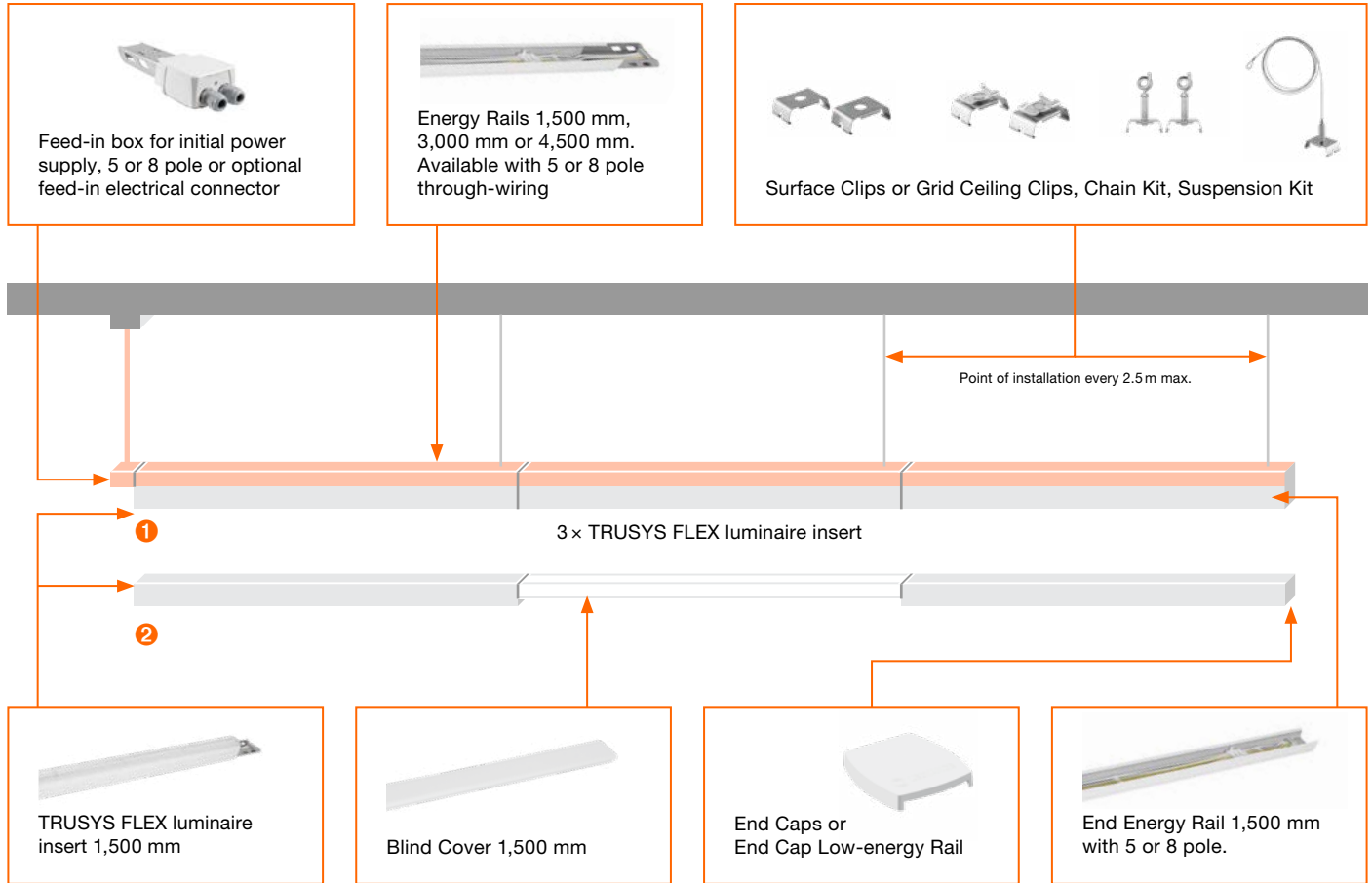
ZIGGO DATA CENTRE: SMART LIGHTING SUCCESS

LEDVANCE helped deliver expert lighting design & installation with LED TRUSYS FLEX for Ziggo's data centre. See more: [ledvance.com/DataCenter](https://www.ledvance.com/DataCenter)



THE WAY TO YOUR PERFECT TRUSYS FLEX SOLUTION

LINEAR INSTALLATION EXAMPLE ① WITHOUT AND ② WITH BLIND COVER



FOR INSTALLATION YOU WILL NEED:

- 1 × TRUSYS FLEX Feed-in Box/Feed-in electrical connector (5 or 8 pole)
- X × TRUSYS FLEX Energy Rail 5 or 8 pole
- 1 × TRUSYS FLEX End Energy Rail
- X × TRUSYS FLEX LED luminaire insert (TRUSYS FLEX Blind Cover as required)
- X × TRUSYS FLEX Spot Track 1500 insert (optional)
- X × Accessories depending on type of mounting (surface or suspended)
- 1 × Set TRUSYS FLEX End Cap Energy Rail or End Cap Low-energy Rail



ALTERNATIVES TO TRUSYS FLEX LUMINAIRE FOR INTEGRATION OF TRACK SPOTS, LED TUBES OR SENSORS

SPOT TRACK 1500 insert with an integrated 900 mm slidable track



Enables up to 3 track spots to be installed. Compatible with LEDVANCE Tracklight Spot Zoom and Spot



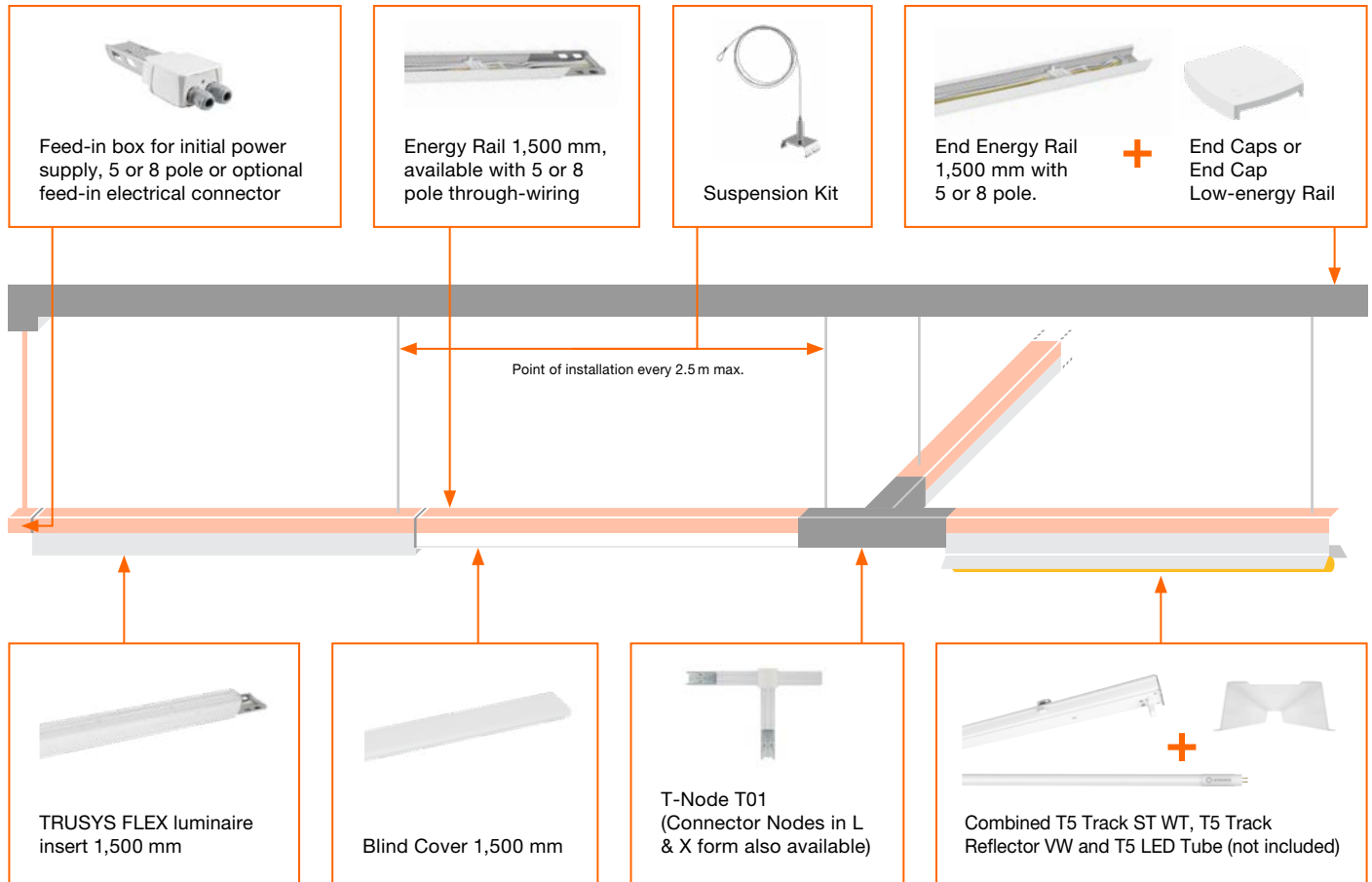
The combination of T5 rails – for single (ST) or double (DT) tubes – and T5 TRACK REFLECTOR VW allows the use of compatible LEDVANCE T5 LED TUBES (see operating instructions for list).



SENSOR TRACK 600/1500 8P (MSensor G3 SFI 30 PIR included)

Example installations: So you can install a tailor-made TRUSYS FLEX lighting system for your customers we have put together a summary of the components you'll need for individual luminaires or strip lighting. With appropriate accessories depending on the type of mounting (surface or suspended). For simple strip lighting the mechanical and electrical connectors are already integrated in the trunking.

T-SHAPED INSTALLATION EXAMPLE (E. G. WITH T-NODE)



FOR INSTALLATION YOU WILL NEED:

- 1 x TRUSYS FLEX Feed-in Box/Feed-in electrical connector (5 or 8 pole)
- 3 x TRUSYS FLEX Energy Rail 5 or 8 pole
- 1 x TRUSYS FLEX End Energy Rail 1500 (5 or 8 pole)
- 1 x TRUSYS FLEX End Cap
- 2 x TRUSYS FLEX LED luminaire 1500 insert
- 1 x TRUSYS FLEX Blind Cover 1500
- 1 x TRUSYS FLEX T-Node T01
- 1 x TRUSYS FLEX T5 Track ST 1500 8P WT
- 1 x TRUSYS FLEX T5 Track Reflector VW
- 1 x T5 LED Tube
- 3 x TRUSYS FLEX Suspension Kits



For more information on installation, components and compatible LED TUBES T5 from LEDVANCE see the operating instructions for the relevant TRUSYS FLEX model or accessories.

TRUSYS FLEX REQUIREMENTS TABLE


Requirements table for sample strip lighting when allocating luminaire inserts to every second insert adapter (50 %) or every third insert adapter (33 %) on the mounting rails (Energy Rail). Additional configurations are of course also possible, for example with no insert adapters (100 %). For precise light planning for your project, please contact your sales representative.



| 50% | | | | | | | | |
|--------------------------|------------------------------|-------------|----------|------------|----------|---------------------------------------|---------|----------|
| Length of strip lighting | TRUSYS FLEX luminaire insert | Blind cover | 3 m rail | 1.5 m rail | End rail | Min. installation points ¹ | Feed-in | End caps |
| 4.5 m | 2 | 1 | 1 | 0 | 1 | 2 | 1 | 2 |
| 7.5 m | 3 | 2 | 2 | 0 | 1 | 3 | 1 | 2 |
| 10.5 m | 4 | 3 | 3 | 0 | 1 | 4 | 1 | 2 |
| 13.5 m | 5 | 4 | 4 | 0 | 1 | 5 | 1 | 2 |
| 16.5 m | 6 | 5 | 5 | 0 | 1 | 6 | 1 | 2 |
| 19.5 m | 7 | 6 | 6 | 0 | 1 | 7 | 1 | 2 |
| 22.5 m | 8 | 7 | 7 | 0 | 1 | 8 | 1 | 2 |
| 25.5 m | 9 | 8 | 8 | 0 | 1 | 9 | 1 | 2 |
| 28.5 m | 10 | 9 | 9 | 0 | 1 | 10 | 1 | 2 |
| 31.5 m | 11 | 10 | 10 | 0 | 1 | 11 | 1 | 2 |
| 34.5 m | 12 | 11 | 11 | 0 | 1 | 12 | 1 | 2 |
| 37.5 m | 13 | 12 | 12 | 0 | 1 | 13 | 1 | 2 |
| 40.5 m | 14 | 13 | 13 | 0 | 1 | 14 | 1 | 2 |
| 43.5 m | 15 | 14 | 14 | 0 | 1 | 15 | 1 | 2 |
| 46.5 m | 16 | 15 | 15 | 0 | 1 | 16 | 1 | 2 |
| 49.5 m | 17 | 16 | 16 | 0 | 1 | 17 | 1 | 2 |

| 33% | | | | | | | | |
|--------------------------|------------------------------|-------------|----------|------------|----------|---------------------------------------|---------|----------|
| Length of strip lighting | TRUSYS FLEX luminaire insert | Blind cover | 3 m rail | 1.5 m rail | End rail | Min. installation points ¹ | Feed-in | End caps |
| 6.0 m | 2 | 2 | 1 | 1 | 1 | 3 | 1 | 2 |
| 10.5 m | 3 | 4 | 3 | 0 | 1 | 4 | 1 | 2 |
| 15.0 m | 4 | 6 | 4 | 1 | 1 | 6 | 1 | 2 |
| 19.5 m | 5 | 8 | 5 | 0 | 1 | 7 | 1 | 2 |
| 24.0 m | 6 | 10 | 7 | 1 | 1 | 9 | 1 | 2 |
| 28.5 m | 7 | 12 | 9 | 0 | 1 | 10 | 1 | 2 |
| 33.0 m | 8 | 14 | 10 | 1 | 1 | 12 | 1 | 2 |
| 37.5 m | 9 | 16 | 12 | 0 | 1 | 13 | 1 | 2 |
| 42.0 m | 10 | 18 | 13 | 1 | 1 | 15 | 1 | 2 |
| 46.5 m | 11 | 20 | 15 | 0 | 1 | 16 | 1 | 2 |
| 51.0 m | 12 | 22 | 16 | 1 | 1 | 18 | 1 | 2 |

 Luminaire insert 1,500 mm

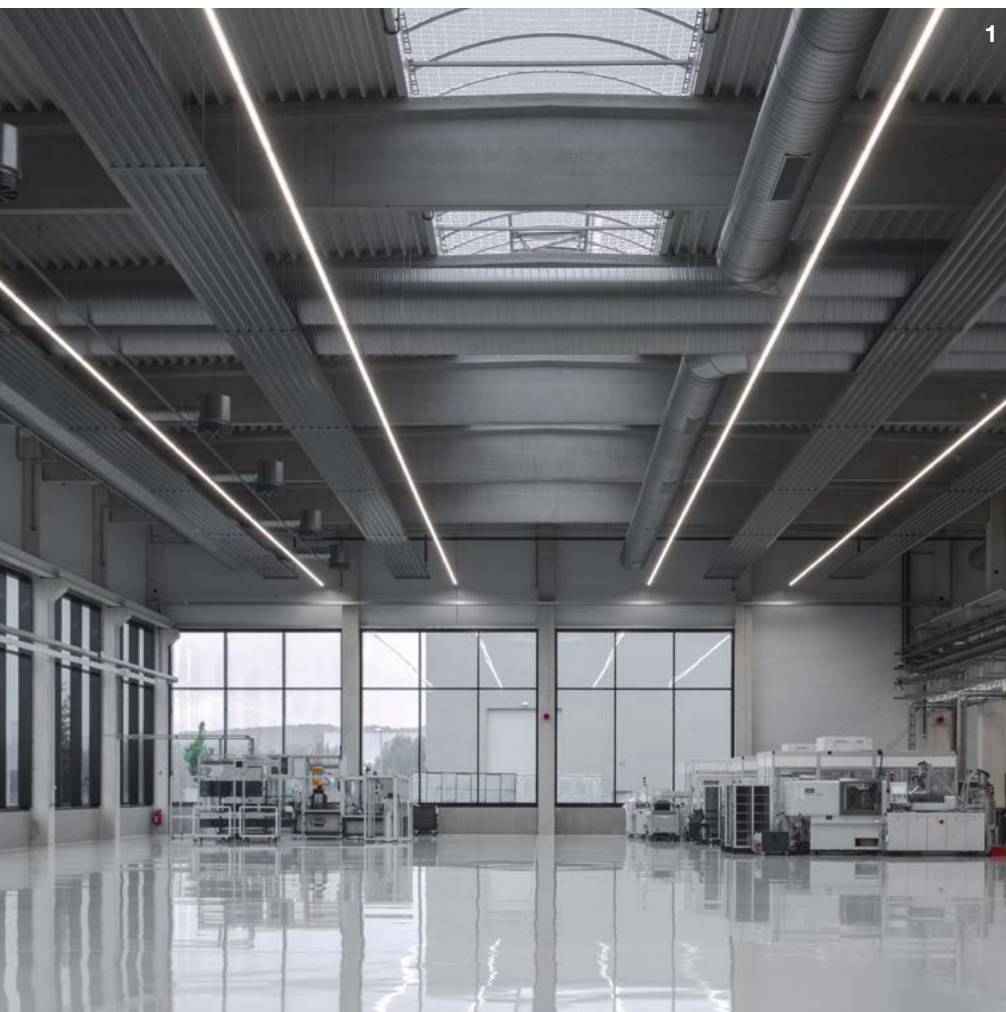
 Blind cover 1,500 mm

All figures mentioned are based on a single installation; deviations from the content possible as per EAN. For precise light planning for your project, please contact your sales representative.
¹ Calculation based on a distance of 0.75 m from the start and end of the rail to the first and last installation point. Additional installation points every 3 m max.



CHALLENGES? ACCEPTED!

From industrial applications and warehouses to workshops and shop lighting – the extremely efficient and versatile TRUSYS FLEX trunking system is suitable for almost any application thanks to its numerous mounting and configuration options.



1. The combination of TRUSYS FLEX T5 rails, T5 rail reflectors and powerful LEDVANCE T5 LED TUBES is an excellent solution for industrial applications.
2. LEDVANCE TRACKSPOTS integrated into the TRUSYS FLEX trunking system provide efficient and sales-boosting lighting in retail.

3. Thanks to good colour rendering values of > 80 CRI and protection class IP40, TRUSYS FLEX is also ideal for the food trade.

TRUSYS FLEX

PERFORMANCE CLASS



| Product name | EAN (GTIN) | Replacement for | W | lm | lm/W | K | L70 ¹ | | | | | | | L x W x H [mm] Ø x H [mm] |
|---|---------------|-----------------|----|-------|------|------|------------------|-----|--------|---|--------------------|---|---|------------------------------|
| TRUSYS FLEX VERY WIDE – Luminaire inserts with very wide light distribution, up to 175 lm/W | | | | | | | | | | | | | | |
| TRUSYS FLEX P 35W 840 VW CL WT | 4058075771017 | 2 x 49W FL | 35 | 6000 | 175 | 4000 | 100000 | 120 | — | — | 1500 x 77.7 x 39.4 | — | — | — |
| TRUSYS FLEX P 35W 865 VW CL WT | 4099854190490 | 2 x 49W FL | 35 | 6000 | 175 | 6500 | 100000 | 120 | — | — | 1500 x 77.7 x 39.4 | — | — | — |
| TRUSYS FLEX P 50W 840 VW CL WT | 4058075771444 | 2 x 80W FL | 50 | 8600 | 175 | 4000 | 100000 | 120 | — | — | 1500 x 77.7 x 39.4 | — | — | — |
| TRUSYS FLEX P 50W 865 VW CL WT | 4099854190650 | 2 x 80W FL | 50 | 8600 | 175 | 6500 | 100000 | 120 | — | — | 1500 x 77.7 x 39.4 | — | — | — |
| TRUSYS FLEX P 70W 840 VW CL WT | 4058075771840 | 3 x 80W FL | 70 | 12100 | 175 | 4000 | 100000 | 120 | — | — | 1500 x 77.7 x 39.4 | — | — | — |
| TRUSYS FLEX P 70W 865 VW CL WT | 4099854190810 | 3 x 80W FL | 70 | 12100 | 175 | 6500 | 100000 | 120 | — | — | 1500 x 77.7 x 39.4 | — | — | — |
| TRUSYS FLEX P 35W 840 VW CL WT DALI | 4058075770799 | 2 x 49W FL | 35 | 5700 | 175 | 4000 | 100000 | 120 | DALI-2 | — | 1500 x 77.7 x 39.4 | — | — | — |
| TRUSYS FLEX P 35W 865 VW CL WT DALI | 4099854191039 | 2 x 49W FL | 35 | 5700 | 165 | 6500 | 100000 | 120 | DALI-2 | — | 1500 x 77.7 x 39.4 | — | — | — |
| TRUSYS FLEX P 50W 840 VW CL WT DALI | 4058075770911 | 2 x 80W FL | 50 | 8600 | 175 | 4000 | 100000 | 120 | DALI-2 | — | 1500 x 77.7 x 39.4 | — | — | — |
| TRUSYS FLEX P 50W 865 VW CL WT DALI | 4099854191190 | 2 x 80W FL | 50 | 8600 | 175 | 6500 | 100000 | 120 | DALI-2 | — | 1500 x 77.7 x 39.4 | — | — | — |
| TRUSYS FLEX P 70W 840 VW CL WT DALI | 4058075771055 | 3 x 80W FL | 70 | 12100 | 175 | 4000 | 100000 | 120 | DALI-2 | — | 1500 x 77.7 x 39.4 | — | — | — |
| TRUSYS FLEX P 70W 865 VW CL WT DALI | 4099854191459 | 3 x 80W FL | 70 | 12100 | 175 | 6500 | 100000 | 120 | DALI-2 | — | 1500 x 77.7 x 39.4 | — | — | — |
| TRUSYS FLEX WIDE – Luminaire inserts with wide light distribution, up to 175 lm/W | | | | | | | | | | | | | | |
| TRUSYS FLEX P 35W 840 W CL WT | 4058075771093 | 2 x 49W FL | 35 | 6000 | 175 | 4000 | 100000 | 90 | — | — | 1500 x 77.7 x 39.4 | — | — | — |
| TRUSYS FLEX P 35W 865 W CL WT | 4099854190513 | 2 x 49W FL | 35 | 6000 | 175 | 6500 | 100000 | 90 | — | — | 1500 x 77.7 x 39.4 | — | — | — |
| TRUSYS FLEX P 50W 840 W CL WT | 4058075771482 | 2 x 80W FL | 50 | 8600 | 175 | 4000 | 100000 | 90 | — | — | 1500 x 77.7 x 39.4 | — | — | — |
| TRUSYS FLEX P 50W 865 W CL WT | 4099854190674 | 2 x 80W FL | 50 | 8600 | 175 | 6500 | 100000 | 90 | — | — | 1500 x 77.7 x 39.4 | — | — | — |
| TRUSYS FLEX P 70W 840 W CL WT | 4058075771864 | 3 x 80W FL | 70 | 12100 | 175 | 4000 | 100000 | 90 | — | — | 1500 x 77.7 x 39.4 | — | — | — |
| TRUSYS FLEX P 70W 865 W CL WT | 4099854190834 | 3 x 80W FL | 70 | 12100 | 175 | 6500 | 100000 | 90 | — | — | 1500 x 77.7 x 39.4 | — | — | — |
| TRUSYS FLEX P 35W 840 W CL WT DALI | 4058075770812 | 2 x 49W FL | 35 | 5800 | 175 | 4000 | 100000 | 90 | DALI-2 | — | 1500 x 77.7 x 39.4 | — | — | — |
| TRUSYS FLEX P 35W 865 W CL WT DALI | 4099854191053 | 2 x 49W FL | 35 | 5800 | 170 | 6500 | 100000 | 90 | DALI-2 | — | 1500 x 77.7 x 39.4 | — | — | — |
| TRUSYS FLEX P 50W 840 W CL WT DALI | 4058075770935 | 2 x 80W FL | 50 | 8600 | 175 | 4000 | 100000 | 90 | DALI-2 | — | 1500 x 77.7 x 39.4 | — | — | — |
| TRUSYS FLEX P 50W 865 W CL WT DALI | 4099854191312 | 2 x 80W FL | 50 | 8600 | 175 | 6500 | 100000 | 90 | DALI-2 | — | 1500 x 77.7 x 39.4 | — | — | — |
| TRUSYS FLEX P 70W 840 W CL WT DALI | 4058075771079 | 3 x 80W FL | 70 | 12100 | 175 | 4000 | 100000 | 90 | DALI-2 | — | 1500 x 77.7 x 39.4 | — | — | — |
| TRUSYS FLEX P 70W 865 W CL WT DALI | 4099854191473 | 3 x 80W FL | 70 | 12100 | 175 | 6500 | 100000 | 90 | DALI-2 | — | 1500 x 77.7 x 39.4 | — | — | — |
| TRUSYS FLEX WIDE OPAL – Luminaire inserts with wide light distribution and opal lens, up to 167 lm/W | | | | | | | | | | | | | | |
| TRUSYS FLEX P 35W 840 W OP WT | 4058075771406 | 2 x 49W FL | 35 | 5800 | 167 | 4000 | 100000 | 90 | — | — | 1500 x 77.7 x 39.4 | — | — | — |
| TRUSYS FLEX P 35W 865 W OP WT | 4099854190599 | 2 x 49W FL | 35 | 5800 | 167 | 6500 | 100000 | 90 | — | — | 1500 x 77.7 x 39.4 | — | — | — |
| TRUSYS FLEX P 50W 840 W OP WT | 4058075771826 | 2 x 80W FL | 50 | 8300 | 167 | 4000 | 100000 | 90 | — | — | 1500 x 77.7 x 39.4 | — | — | — |
| TRUSYS FLEX P 50W 865 W OP WT | 4099854190759 | 2 x 80W FL | 50 | 8300 | 167 | 6500 | 100000 | 90 | — | — | 1500 x 77.7 x 39.4 | — | — | — |
| TRUSYS FLEX P 70W 840 W OP WT | 4058075772090 | 3 x 80W FL | 70 | 11700 | 167 | 4000 | 100000 | 90 | — | — | 1500 x 77.7 x 39.4 | — | — | — |
| TRUSYS FLEX P 70W 865 W OP WT | 4099854190919 | 3 x 80W FL | 70 | 11700 | 167 | 6500 | 100000 | 90 | — | — | 1500 x 77.7 x 39.4 | — | — | — |
| TRUSYS FLEX P 35W 840 W OP WT DALI | 4058075770898 | 2 x 49W FL | 35 | 5600 | 167 | 4000 | 100000 | 90 | DALI-2 | — | 1500 x 77.7 x 39.4 | — | — | — |
| TRUSYS FLEX P 35W 865 W OP WT DALI | 4099854191138 | 2 x 49W FL | 35 | 5600 | 160 | 6500 | 100000 | 90 | DALI-2 | — | 1500 x 77.7 x 39.4 | — | — | — |
| TRUSYS FLEX P 50W 840 W OP WT DALI | 4058075771031 | 2 x 80W FL | 50 | 8300 | 167 | 4000 | 100000 | 90 | DALI-2 | — | 1500 x 77.7 x 39.4 | — | — | — |
| TRUSYS FLEX P 50W 865 W OP WT DALI | 4099854191398 | 2 x 80W FL | 50 | 8300 | 167 | 6500 | 100000 | 90 | DALI-2 | — | 1500 x 77.7 x 39.4 | — | — | — |
| TRUSYS FLEX P 70W 840 W OP WT DALI | 4058075771901 | 3 x 80W FL | 70 | 11700 | 167 | 4000 | 100000 | 90 | DALI-2 | — | 1500 x 77.7 x 39.4 | — | — | — |
| TRUSYS FLEX P 70W 865 W OP WT DALI | 4099854191558 | 3 x 80W FL | 70 | 11700 | 167 | 6500 | 100000 | 90 | DALI-2 | — | 1500 x 77.7 x 39.4 | — | — | — |
| TRUSYS FLEX NARROW – Luminaire inserts with narrow light distribution, up to 175 lm/W | | | | | | | | | | | | | | |
| TRUSYS FLEX P 35W 840 N CL WT | 4058075771307 | 2 x 49W FL | 35 | 6000 | 175 | 4000 | 100000 | 60 | — | — | 1500 x 77.7 x 39.4 | — | — | — |
| TRUSYS FLEX P 35W 865 N CL WT | 4099854190537 | 2 x 49W FL | 35 | 6000 | 175 | 6500 | 100000 | 60 | — | — | 1500 x 77.7 x 39.4 | — | — | — |
| TRUSYS FLEX P 50W 840 N CL WT | 4058075771574 | 2 x 80W FL | 50 | 8600 | 175 | 4000 | 100000 | 60 | — | — | 1500 x 77.7 x 39.4 | — | — | — |
| TRUSYS FLEX P 50W 865 N CL WT | 4099854190698 | 2 x 80W FL | 50 | 8600 | 175 | 6500 | 100000 | 60 | — | — | 1500 x 77.7 x 39.4 | — | — | — |
| TRUSYS FLEX P 70W 840 N CL WT | 4058075771888 | 3 x 80W FL | 70 | 12100 | 175 | 4000 | 100000 | 60 | — | — | 1500 x 77.7 x 39.4 | — | — | — |
| TRUSYS FLEX P 70W 865 N CL WT | 4099854190858 | 3 x 80W FL | 70 | 12100 | 175 | 6500 | 100000 | 60 | — | — | 1500 x 77.7 x 39.4 | — | — | — |
| TRUSYS FLEX P 35W 840 N CL WT DALI | 4058075770836 | 2 x 49W FL | 35 | 5800 | 175 | 4000 | 100000 | 60 | DALI-2 | — | 1500 x 77.7 x 39.4 | — | — | — |
| TRUSYS FLEX P 35W 865 N CL WT DALI | 4099854191077 | 2 x 49W FL | 35 | 5800 | 170 | 6500 | 100000 | 60 | DALI-2 | — | 1500 x 77.7 x 39.4 | — | — | — |
| TRUSYS FLEX P 50W 840 N CL WT DALI | 4058075770959 | 2 x 80W FL | 50 | 8600 | 175 | 4000 | 100000 | 60 | DALI-2 | — | 1500 x 77.7 x 39.4 | — | — | — |
| TRUSYS FLEX P 50W 865 N CL WT DALI | 4099854191336 | 2 x 80W FL | 50 | 8600 | 175 | 6500 | 100000 | 60 | DALI-2 | — | 1500 x 77.7 x 39.4 | — | — | — |
| TRUSYS FLEX P 70W 840 N CL WT DALI | 4058075771116 | 3 x 80W FL | 70 | 12100 | 175 | 4000 | 100000 | 60 | DALI-2 | — | 1500 x 77.7 x 39.4 | — | — | — |
| TRUSYS FLEX P 70W 865 N CL WT DALI | 4099854191497 | 3 x 80W FL | 70 | 12100 | 175 | 6500 | 100000 | 60 | DALI-2 | — | 1500 x 77.7 x 39.4 | — | — | — |

¹ t[h]: L70/B50 @ 25°C (T_a)/t[h]; L80/B10 @ 25°C (T_a)

² Flicker value ≤ 10% for DALI versions

³ Refer to www.ledvance.com/guarantee for precise conditions

| Product name | EAN (GTIN) | Replacement for | W | lm | lm/W | K | L70 ¹ | Δ | Δ | L x W x H [mm] Ø x H [mm] |
|--------------|------------|-----------------|---|----|------|---|------------------|----------|----------|------------------------------|
|--------------|------------|-----------------|---|----|------|---|------------------|----------|----------|------------------------------|



TRUSYS FLEX VERY NARROW – Luminaire inserts with very narrow light distribution, up to 175 lm/W

| | | | | | | | | | | |
|-------------------------------------|---------------|------------|----|-------|-----|------|--------|----|--------|--------------------|
| TRUSYS FLEX P 35W 840 VN CL WT | 4058075771345 | 2 x 49W FL | 35 | 6000 | 175 | 4000 | 100000 | 30 | — | 1500 x 77.7 x 39.4 |
| TRUSYS FLEX P 35W 865 VN CL WT | 4099854190551 | 2 x 49W FL | 35 | 6000 | 175 | 6500 | 100000 | 30 | — | 1500 x 77.7 x 39.4 |
| TRUSYS FLEX P 50W 840 VN CL WT | 4058075771604 | 2 x 80W FL | 50 | 8600 | 175 | 4000 | 100000 | 30 | — | 1500 x 77.7 x 39.4 |
| TRUSYS FLEX P 50W 865 VN CL WT | 4099854190711 | 2 x 80W FL | 50 | 8600 | 175 | 6500 | 100000 | 30 | — | 1500 x 77.7 x 39.4 |
| TRUSYS FLEX P 70W 840 VN CL WT | 4058075771925 | 3 x 80W FL | 70 | 12100 | 175 | 4000 | 100000 | 30 | — | 1500 x 77.7 x 39.4 |
| TRUSYS FLEX P 70W 865 VN CL WT | 4099854190872 | 3 x 80W FL | 70 | 12100 | 175 | 6500 | 100000 | 30 | — | 1500 x 77.7 x 39.4 |
| TRUSYS FLEX P 35W 840 VN CL WT DALI | 4058075770850 | 2 x 49W FL | 35 | 5800 | 175 | 4000 | 100000 | 30 | DALI-2 | 1500 x 77.7 x 39.4 |
| TRUSYS FLEX P 35W 865 VN CL WT DALI | 4099854191091 | 2 x 49W FL | 35 | 5800 | 170 | 6500 | 100000 | 30 | DALI-2 | 1500 x 77.7 x 39.4 |
| TRUSYS FLEX P 50W 840 VN CL WT DALI | 4058075770973 | 2 x 80W FL | 50 | 8600 | 175 | 4000 | 100000 | 30 | DALI-2 | 1500 x 77.7 x 39.4 |
| TRUSYS FLEX P 50W 865 VN CL WT DALI | 4099854191350 | 2 x 80W FL | 50 | 8600 | 175 | 6500 | 100000 | 30 | DALI-2 | 1500 x 77.7 x 39.4 |
| TRUSYS FLEX P 70W 840 VN CL WT DALI | 4058075771130 | 3 x 80W FL | 70 | 12100 | 175 | 4000 | 100000 | 30 | DALI-2 | 1500 x 77.7 x 39.4 |
| TRUSYS FLEX P 70W 865 VN CL WT DALI | 4099854191510 | 3 x 80W FL | 70 | 12100 | 175 | 6500 | 100000 | 30 | DALI-2 | 1500 x 77.7 x 39.4 |



TRUSYS FLEX DOUBLE SYMMETRIC – Luminaire inserts with double symmetric light distribution, up to 175 lm/W

| | | | | | | | | | | |
|-------------------------------------|---------------|------------|----|-------|-----|------|--------|--------|--------|--------------------|
| TRUSYS FLEX P 35W 840 DS CL WT | 4058075771383 | 2 x 49W FL | 35 | 6000 | 175 | 4000 | 100000 | 2 x 30 | — | 1500 x 77.7 x 39.4 |
| TRUSYS FLEX P 35W 865 DS CL WT | 4099854190575 | 2 x 49W FL | 35 | 6000 | 175 | 6500 | 100000 | 2 x 30 | — | 1500 x 77.7 x 39.4 |
| TRUSYS FLEX P 50W 840 DS CL WT | 4058075771802 | 2 x 80W FL | 50 | 8600 | 175 | 4000 | 100000 | 2 x 30 | — | 1500 x 77.7 x 39.4 |
| TRUSYS FLEX P 50W 865 DS CL WT | 4099854190735 | 2 x 80W FL | 50 | 8600 | 175 | 6500 | 100000 | 2 x 30 | — | 1500 x 77.7 x 39.4 |
| TRUSYS FLEX P 70W 840 DS CL WT | 4058075771994 | 3 x 80W FL | 70 | 12100 | 175 | 4000 | 100000 | 2 x 30 | — | 1500 x 77.7 x 39.4 |
| TRUSYS FLEX P 70W 865 DS CL WT | 4099854190896 | 3 x 80W FL | 70 | 12100 | 175 | 6500 | 100000 | 2 x 30 | — | 1500 x 77.7 x 39.4 |
| TRUSYS FLEX P 35W 840 DS CL WT DALI | 4058075770874 | 2 x 49W FL | 35 | 5700 | 175 | 4000 | 100000 | 2 x 30 | DALI-2 | 1500 x 77.7 x 39.4 |
| TRUSYS FLEX P 35W 865 DS CL WT DALI | 4099854191114 | 2 x 49W FL | 35 | 5700 | 165 | 6500 | 100000 | 2 x 30 | DALI-2 | 1500 x 77.7 x 39.4 |
| TRUSYS FLEX P 50W 840 DS CL WT DALI | 4058075770997 | 2 x 80W FL | 50 | 8600 | 175 | 4000 | 100000 | 2 x 30 | DALI-2 | 1500 x 77.7 x 39.4 |
| TRUSYS FLEX P 50W 865 DS CL WT DALI | 4099854191374 | 2 x 80W FL | 50 | 8600 | 175 | 6500 | 100000 | 2 x 30 | DALI-2 | 1500 x 77.7 x 39.4 |
| TRUSYS FLEX P 70W 840 DS CL WT DALI | 4058075771154 | 3 x 80W FL | 70 | 12100 | 175 | 4000 | 100000 | 2 x 30 | DALI-2 | 1500 x 77.7 x 39.4 |
| TRUSYS FLEX P 70W 865 DS CL WT DALI | 4099854191534 | 3 x 80W FL | 70 | 12100 | 175 | 6500 | 100000 | 2 x 30 | DALI-2 | 1500 x 77.7 x 39.4 |



TRUSYS FLEX WALLWASHER – Luminaire inserts with asymmetric wallwasher light distribution, up to 175 lm/W

| | | | | | | | | | | |
|-------------------------------------|---------------|------------|----|-------|-----|------|--------|----|--------|--------------------|
| TRUSYS FLEX P 35W 840 WW CL WT | 4099854190636 | 2 x 49W FL | 35 | 6000 | 175 | 4000 | 100000 | 40 | — | 1500 x 77.7 x 39.4 |
| TRUSYS FLEX P 35W 865 WW CL WT | 4099854190612 | 2 x 49W FL | 35 | 6000 | 175 | 6500 | 100000 | 40 | — | 1500 x 77.7 x 39.4 |
| TRUSYS FLEX P 50W 840 WW CL WT | 4099854190797 | 2 x 80W FL | 50 | 8600 | 175 | 4000 | 100000 | 40 | — | 1500 x 77.7 x 39.4 |
| TRUSYS FLEX P 50W 865 WW CL WT | 4099854190773 | 2 x 80W FL | 50 | 8600 | 175 | 6500 | 100000 | 40 | — | 1500 x 77.7 x 39.4 |
| TRUSYS FLEX P 70W 840 WW CL WT | 4099854190957 | 3 x 80W FL | 70 | 12100 | 175 | 4000 | 100000 | 40 | — | 1500 x 77.7 x 39.4 |
| TRUSYS FLEX P 70W 865 WW CL WT | 4099854190933 | 3 x 80W FL | 70 | 12100 | 175 | 6500 | 100000 | 40 | — | 1500 x 77.7 x 39.4 |
| TRUSYS FLEX P 35W 840 WW CL WT DALI | 4099854191176 | 2 x 49W FL | 35 | 5700 | 165 | 4000 | 100000 | 40 | DALI-2 | 1500 x 77.7 x 39.4 |
| TRUSYS FLEX P 35W 865 WW CL WT DALI | 4099854191152 | 2 x 49W FL | 35 | 5700 | 165 | 6500 | 100000 | 40 | DALI-2 | 1500 x 77.7 x 39.4 |
| TRUSYS FLEX P 50W 840 WW CL WT DALI | 4099854191435 | 2 x 80W FL | 50 | 8600 | 175 | 4000 | 100000 | 40 | DALI-2 | 1500 x 77.7 x 39.4 |
| TRUSYS FLEX P 50W 865 WW CL WT DALI | 4099854191411 | 2 x 80W FL | 50 | 8600 | 175 | 6500 | 100000 | 40 | DALI-2 | 1500 x 77.7 x 39.4 |
| TRUSYS FLEX P 70W 840 WW CL WT DALI | 4099854191596 | 3 x 80W FL | 70 | 12100 | 175 | 4000 | 100000 | 40 | DALI-2 | 1500 x 77.7 x 39.4 |
| TRUSYS FLEX P 70W 865 WW CL WT DALI | 4099854191572 | 3 x 80W FL | 70 | 12100 | 175 | 6500 | 100000 | 40 | DALI-2 | 1500 x 77.7 x 39.4 |

TRUSYS FLEX EMERGENCY

| Product name | EAN (GTIN) | Replacement for | W | lm | lm/W | K | L70 ¹ | Δ | Δ | L x W x H [mm] Ø x H [mm] |
|--------------|------------|-----------------|---|----|------|---|------------------|----------|----------|------------------------------|
|--------------|------------|-----------------|---|----|------|---|------------------|----------|----------|------------------------------|



TRUSYS FLEX EMERGENCY VERY WIDE – Luminaire inserts with very wide light distribution for standard and emergency lighting, up to 175 lm/W

| | | | | | | | | | | |
|-----------------------------------|---------------|------------|----|-------|-----|------|--------|-----|---|--------------------|
| TRUSYS FLEX P 35W 840 VW CL WT EM | 4058075772878 | 2 x 49W FL | 35 | 6000 | 175 | 4000 | 100000 | 120 | — | 1500 x 77.7 x 39.4 |
| TRUSYS FLEX P 35W 865 VW CL WT EM | 4099854191619 | 2 x 49W FL | 35 | 6000 | 175 | 6500 | 100000 | 120 | — | 1500 x 77.7 x 39.4 |
| TRUSYS FLEX P 50W 840 VW CL WT EM | 4058075773004 | 2 x 80W FL | 50 | 8600 | 175 | 4000 | 100000 | 120 | — | 1500 x 77.7 x 39.4 |
| TRUSYS FLEX P 50W 865 VW CL WT EM | 4099854191770 | 2 x 80W FL | 50 | 8600 | 175 | 6500 | 100000 | 120 | — | 1500 x 77.7 x 39.4 |
| TRUSYS FLEX P 70W 840 VW CL WT EM | 4058075773219 | 3 x 80W FL | 70 | 12100 | 175 | 4000 | 100000 | 120 | — | 1500 x 77.7 x 39.4 |
| TRUSYS FLEX P 70W 865 VW CL WT EM | 4099854190414 | 3 x 80W FL | 70 | 12100 | 175 | 6500 | 100000 | 120 | — | 1500 x 77.7 x 39.4 |



TRUSYS FLEX EMERGENCY WIDE – Luminaire inserts with wide light distribution for standard and emergency lighting, up to 175 lm/W

| | | | | | | | | | | |
|----------------------------------|---------------|------------|----|-------|-----|------|--------|----|---|--------------------|
| TRUSYS FLEX P 35W 840 W CL WT EM | 4058075772892 | 2 x 49W FL | 35 | 6000 | 175 | 4000 | 100000 | 90 | — | 1500 x 77.7 x 39.4 |
| TRUSYS FLEX P 35W 865 W CL WT EM | 4099854191633 | 2 x 49W FL | 35 | 6000 | 175 | 6500 | 100000 | 90 | — | 1500 x 77.7 x 39.4 |
| TRUSYS FLEX P 50W 840 W CL WT EM | 4058075773103 | 2 x 80W FL | 50 | 8600 | 175 | 4000 | 100000 | 90 | — | 1500 x 77.7 x 39.4 |
| TRUSYS FLEX P 50W 865 W CL WT EM | 4099854191794 | 2 x 80W FL | 50 | 8600 | 175 | 6500 | 100000 | 90 | — | 1500 x 77.7 x 39.4 |
| TRUSYS FLEX P 70W 840 W CL WT EM | 4058075773233 | 3 x 80W FL | 70 | 12100 | 175 | 4000 | 100000 | 90 | — | 1500 x 77.7 x 39.4 |
| TRUSYS FLEX P 70W 865 W CL WT EM | 4099854191930 | 3 x 80W FL | 70 | 12100 | 175 | 6500 | 100000 | 90 | — | 1500 x 77.7 x 39.4 |

¹ t[h]: L70/B50 @ 25 °C (T_a)/t[h]: L80/B10 @ 25 °C (T_a)

² Flicker value ≤ 10 % for DALI versions

³ Refer to www.ledvance.com/guarantee for precise conditions

TRUSYS FLEX EMERGENCY

| Product name | EAN (GTIN) | Replacement for | W | lm | lm/W | K | L70 ¹ | | L x W x H [mm] Ø x H [mm] |
|--|---------------|-----------------|----|-------|------|------|------------------|--------|------------------------------|
| TRUSYS FLEX EMERGENCY WIDE OPAL – Luminaire inserts with wide light distribution for standard and emergency lighting, with opal lense, up to 167 lm/W | | | | | | | | | |
| TRUSYS FLEX P 35W 840 W OP WT EM | 4058075772977 | 2 x 49W FL | 35 | 5800 | 167 | 4000 | 100000 | 90 | 1500 x 77.7 x 39.4 |
| TRUSYS FLEX P 35W 865 W OP WT EM | 4099854191718 | 2 x 49W FL | 35 | 5800 | 167 | 6500 | 100000 | 90 | 1500 x 77.7 x 39.4 |
| TRUSYS FLEX P 50W 840 W OP WT EM | 4058075773189 | 2 x 80W FL | 50 | 8300 | 167 | 4000 | 100000 | 90 | 1500 x 77.7 x 39.4 |
| TRUSYS FLEX P 50W 865 W OP WT EM | 4099854191879 | 2 x 80W FL | 50 | 8300 | 167 | 6500 | 100000 | 90 | 1500 x 77.7 x 39.4 |
| TRUSYS FLEX P 70W 840 W OP WT EM | 4058075773318 | 3 x 80W FL | 70 | 11700 | 167 | 4000 | 100000 | 90 | 1500 x 77.7 x 39.4 |
| TRUSYS FLEX P 70W 865 W OP WT EM | 4099854192012 | 3 x 80W FL | 70 | 11700 | 167 | 6500 | 100000 | 90 | 1500 x 77.7 x 39.4 |
| TRUSYS FLEX EMERGENCY NARROW – Luminaire inserts with narrow light distribution for standard and emergency lighting, up to 175 lm/W | | | | | | | | | |
| TRUSYS FLEX P 35W 840 N CL WT EM | 4058075772915 | 2 x 49W FL | 35 | 6000 | 175 | 4000 | 100000 | 60 | 1500 x 77.7 x 39.4 |
| TRUSYS FLEX P 35W 865 N CL WT EM | 4099854191657 | 2 x 49W FL | 35 | 6000 | 175 | 6500 | 100000 | 60 | 1500 x 77.7 x 39.4 |
| TRUSYS FLEX P 50W 840 N CL WT EM | 4058075773127 | 2 x 80W FL | 50 | 8600 | 175 | 4000 | 100000 | 60 | 1500 x 77.7 x 39.4 |
| TRUSYS FLEX P 50W 865 N CL WT EM | 4099854191817 | 2 x 80W FL | 50 | 8600 | 175 | 6500 | 100000 | 60 | 1500 x 77.7 x 39.4 |
| TRUSYS FLEX P 70W 840 N CL WT EM | 4058075773257 | 3 x 80W FL | 70 | 12100 | 175 | 4000 | 100000 | 60 | 1500 x 77.7 x 39.4 |
| TRUSYS FLEX P 70W 865 N CL WT EM | 4099854191954 | 3 x 80W FL | 70 | 12100 | 175 | 6500 | 100000 | 60 | 1500 x 77.7 x 39.4 |
| TRUSYS FLEX EMERGENCY VERY NARROW – Luminaire inserts with very narrow light distribution for standard and emergency lighting, up to 175 lm/W | | | | | | | | | |
| TRUSYS FLEX P 35W 840 VN CL WT EM | 4058075772939 | 2 x 49W FL | 35 | 6000 | 175 | 4000 | 100000 | 30 | 1500 x 77.7 x 39.4 |
| TRUSYS FLEX P 35W 865 VN CL WT EM | 4099854191671 | 2 x 49W FL | 35 | 6000 | 175 | 6500 | 100000 | 30 | 1500 x 77.7 x 39.4 |
| TRUSYS FLEX P 50W 840 VN CL WT EM | 4058075773141 | 2 x 80W FL | 50 | 8600 | 175 | 4000 | 100000 | 30 | 1500 x 77.7 x 39.4 |
| TRUSYS FLEX P 50W 865 VN CL WT EM | 4099854191831 | 2 x 80W FL | 50 | 8600 | 175 | 6500 | 100000 | 30 | 1500 x 77.7 x 39.4 |
| TRUSYS FLEX P 70W 840 VN CL WT EM | 4058075773271 | 3 x 80W FL | 70 | 12100 | 175 | 4000 | 100000 | 30 | 1500 x 77.7 x 39.4 |
| TRUSYS FLEX P 70W 865 VN CL WT EM | 4099854191978 | 3 x 80W FL | 70 | 12100 | 175 | 6500 | 100000 | 30 | 1500 x 77.7 x 39.4 |
| TRUSYS FLEX EMERGENCY DOUBLE ASYMMETRIC – Luminaire inserts with double asymmetric light distribution for standard and emergency lighting, up to 175 lm/W | | | | | | | | | |
| TRUSYS FLEX P 35W 840 DS CL WT EM | 4058075772953 | 2 x 49W FL | 35 | 6000 | 175 | 4000 | 100000 | 2 x 30 | 1500 x 77.7 x 39.4 |
| TRUSYS FLEX P 35W 865 DS CL WT EM | 4099854191695 | 2 x 49W FL | 35 | 6000 | 175 | 6500 | 100000 | 2 x 30 | 1500 x 77.7 x 39.4 |
| TRUSYS FLEX P 50W 840 DS CL WT EM | 4058075773165 | 2 x 80W FL | 50 | 8600 | 175 | 4000 | 100000 | 2 x 30 | 1500 x 77.7 x 39.4 |
| TRUSYS FLEX P 50W 865 DS CL WT EM | 4099854191855 | 2 x 80W FL | 50 | 8600 | 175 | 6500 | 100000 | 2 x 30 | 1500 x 77.7 x 39.4 |
| TRUSYS FLEX P 70W 840 DS CL WT EM | 4058075773295 | 3 x 80W FL | 70 | 12100 | 175 | 4000 | 100000 | 2 x 30 | 1500 x 77.7 x 39.4 |
| TRUSYS FLEX P 70W 865 DS CL WT EM | 4099854191992 | 3 x 80W FL | 70 | 12100 | 175 | 6500 | 100000 | 2 x 30 | 1500 x 77.7 x 39.4 |
| TRUSYS FLEX EMERGENCY WALLWASHER – Luminaire inserts with asymmetric wallwasher light distribution for standard and emergency lighting, up to 175 lm/W | | | | | | | | | |
| TRUSYS FLEX P 35W 840 WW CL WT EM | 4099854191756 | 2 x 49W FL | 35 | 6000 | 175 | 4000 | 100000 | 40 | 1500 x 77.7 x 39.4 |
| TRUSYS FLEX P 35W 865 WW CL WT EM | 4099854191732 | 2 x 49W FL | 35 | 6000 | 175 | 6500 | 100000 | 40 | 1500 x 77.7 x 39.4 |
| TRUSYS FLEX P 50W 840 WW CL WT EM | 4099854191916 | 2 x 80W FL | 50 | 8600 | 175 | 4000 | 100000 | 40 | 1500 x 77.7 x 39.4 |
| TRUSYS FLEX P 50W 865 WW CL WT EM | 4099854191893 | 2 x 80W FL | 50 | 8600 | 175 | 6500 | 100000 | 40 | 1500 x 77.7 x 39.4 |
| TRUSYS FLEX P 70W 840 WW CL WT EM | 4099854192050 | 3 x 80W FL | 70 | 12100 | 175 | 4000 | 100000 | 40 | 1500 x 77.7 x 39.4 |
| TRUSYS FLEX P 70W 865 WW CL WT EM | 4099854192036 | 3 x 80W FL | 70 | 12100 | 175 | 6500 | 100000 | 40 | 1500 x 77.7 x 39.4 |

EMERGENCY LIGHTING PROPERTIES

| Product name | Battery life in emergency operation mode | Type of emergency operation test | Type of emergency light operation | Luminous flux in emergency operation mode | Type of Battery |
|---|--|----------------------------------|-----------------------------------|---|-----------------|
| VALID FOR ALL TRUSYS FLEX EMERGENCY TYPES | 3 h | Automatic | Maintained/Non-maintained | 740 lm | LiFePO4 |

¹ t[h]: L70/B50 @ 25°C (T_a)/t[h]: L80/B10 @ 25°C (T_a)

² Refer to www.ledvance.com/guarantee for precise conditions

TRUSYS FLEX ENERGY RAILS

PERFORMANCE CLASS



| Product name | EAN (GTIN) | L × W × H [mm] Ø × H [mm] | MATERIAL | COLOR | No. |
|--------------|------------|------------------------------|----------|-------|-----|
|--------------|------------|------------------------------|----------|-------|-----|

TRUSYS FLEX ENERGY RAIL 5-POLE – Trunking system 5-pole mounting energy rail



| | | | | | |
|-----------------------------------|---------------|--------------------|-------|-------|---|
| TRUSYS FLEX P RAIL 1500 5P WT | 4058075781672 | 1650 × 70.2 × 38.8 | Steel | White | 1 |
| TRUSYS FLEX P RAIL 1500 5P END WT | 4058075781733 | 1500 × 70.2 × 38.8 | Steel | White | 1 |
| TRUSYS FLEX P RAIL 3000 5P WT | 4058075781757 | 3150 × 70.2 × 38.8 | Steel | White | 1 |
| TRUSYS FLEX P RAIL 4500 5P WT | 4058075793156 | 4650 × 70.2 × 38.8 | Steel | White | 1 |

TRUSYS FLEX ENERGY RAIL 8-POLE – Trunking system 8-pole mounting energy rail



| | | | | | |
|-----------------------------------|---------------|--------------------|-------|-------|---|
| TRUSYS FLEX P RAIL 600 8P WT | 4099854193521 | 750 × 70.2 × 38.8 | Steel | White | 2 |
| TRUSYS FLEX P RAIL 600 8P END WT | 4099854193545 | 600 × 70.2 × 38.8 | Steel | White | 2 |
| TRUSYS FLEX P RAIL 1500 8P WT | 4058075781696 | 1650 × 70.2 × 38.8 | Steel | White | 2 |
| TRUSYS FLEX P RAIL 1500 8P END WT | 4058075781719 | 1500 × 70.2 × 38.8 | Steel | White | 2 |
| TRUSYS FLEX P RAIL 3000 8P WT | 4058075781771 | 3150 × 70.2 × 38.8 | Steel | White | 2 |
| TRUSYS FLEX P RAIL 4500 8P WT | 4058075793170 | 4650 × 70.2 × 38.8 | Steel | White | 2 |

TRUSYS FLEX NODES

PERFORMANCE CLASS



| Product name | EAN (GTIN) | L × W × H [mm] Ø × H [mm] | MATERIAL | COLOR | No. |
|--------------|------------|------------------------------|----------|-------|-----|
|--------------|------------|------------------------------|----------|-------|-----|

TRUSYS FLEX NODES – Shaped rail connector for corners



| | | | | | |
|----------------------------|---------------|----------------|-------|-------|---|
| TRUSYS FLEX L01-NODE 5P WT | 4058075782075 | 446 × 296 × 59 | Steel | White | — |
| TRUSYS FLEX L02-NODE 5P WT | 4058075782082 | 446 × 296 × 59 | Steel | White | 1 |
| TRUSYS FLEX L01-NODE 8P WT | 4058075782099 | 446 × 296 × 59 | Steel | White | — |
| TRUSYS FLEX L02-NODE 8P WT | 4058075782105 | 446 × 296 × 59 | Steel | White | 1 |
| TRUSYS FLEX T01-NODE 5P WT | 4058075782112 | 650 × 446 × 59 | Steel | White | 2 |
| TRUSYS FLEX T02-NODE 5P WT | 4058075782129 | 650 × 446 × 59 | Steel | White | — |
| TRUSYS FLEX T03-NODE 5P WT | 4058075782136 | 800 × 296 × 59 | Steel | White | — |
| TRUSYS FLEX T01-NODE 8P WT | 4058075782143 | 650 × 446 × 59 | Steel | White | 2 |
| TRUSYS FLEX T02-NODE 8P WT | 4058075782150 | 650 × 446 × 59 | Steel | White | — |
| TRUSYS FLEX T03-NODE 8P WT | 4058075782167 | 800 × 296 × 59 | Steel | White | — |
| TRUSYS FLEX X01-NODE 5P WT | 4058075782174 | 800 × 650 × 59 | Steel | White | 3 |
| TRUSYS FLEX X01-NODE 8P WT | 4058075782181 | 800 × 650 × 59 | Steel | White | 3 |

¹ Refer to www.ledvance.com/guarantee for precise conditions

ABOUT LEDVANCE

With business activities in over 140 countries, LEDVANCE is one of the world's leading general lighting companies. Emerging from OSRAM's general lighting division, LEDVANCE's portfolio includes LED lamps and luminaires, intelligent lighting products, traditional lamps and renewable energy solutions.

#POWERTHROUGHLIGHT

LEDVANCE GmbH
Parkring 1-5
85748 Garching
Germany

LEDVANCE

TRUSYS FLEX TRACKS/INSERTS

PERFORMANCE CLASS



| Product name | EAN (GTIN) | L x W x H [mm] Ø x H [mm] | MATERIAL | COLOR | No. |
|--|---------------|------------------------------|--------------------|-------|-----|
| TRUSYS FLEX TRACKS/INSERTS – Track rail inserts | | | | | |
| TRUSYS FLEX BLIND COVER WT | 4058118270828 | 1500 x 70 x 21 | Polycarbonate (PC) | White | 1 |
| TRUSYS FLEX SPOT TRACK 1500 WT | 4058075782051 | 1500 x 70 x 15.2 | Aluminum | White | 2 |
| TRUSYS FLEX SENSOR TRACK 600 8P WT | 4099854193637 | 598.5 x 69.8 x 56 | Aluminium | White | — |
| TRUSYS FLEX SENSOR TRACK 1500 8P WT | 4099854193651 | 1498.5 x 69.8 x 56 | Aluminium | White | 3 |
| TRUSYS FLEX T5 TRACK ST WT | 4099854230158 | 1498.5 x 77.7 x 91 | Steel | White | 4 |
| TRUSYS FLEX T5 TRACK DT WT | 4099854230172 | 1498.5 x 91.3 x 97 | Steel | White | 5 |
| TRUSYS FLEX T5 TRACK REFLECTOR VW | 4099854230196 | 1486 x 121 x 50 | Steel | White | 6 |

TRUSYS FLEX ACCESSORIES



| Product name | EAN (GTIN) | L x W x H [mm] Ø x H [mm] | MATERIAL | COLOR | No. |
|----------------------------------|---------------|------------------------------|--------------------------------------|--------------|-----|
| TRUSYS FLEX Accessories | | | | | |
| TRUSYS FLEX SUSPENSION KIT | 4058075781795 | 58 x 35 x 65 | Steel | Silver | 1 |
| TRUSYS FLEX CHAIN KIT | 4058075781818 | 90 x 28 x 10 | Steel | Silver | 2 |
| TRUSYS FLEX END CAP RAIL WT | 4058075781856 | 78 x 72 x 19 | Polycarbonate (PC) | White | 3 |
| TRUSYS FLEX END CAP LOW RAIL WT | 4058075781870 | 57 x 72 x 19 | Polycarbonate (PC) | White | 4 |
| TRUSYS FLEX SURFACE CLIP | 4058075781894 | 57 x 35 x 18 | Steel | Silver | 5 |
| TRUSYS FLEX GRID CEILING CLIP | 4058075781917 | 57 x 35 x 26 | Steel | Silver | 6 |
| TRUSYS FLEX FEED IN CONNECTOR 5P | 4099854230219 | 98 x 40 x 15 | Polyamid (PA)/Polyvinylchlorid (PVC) | White/Orange | 7 |
| TRUSYS FLEX FEED IN CONNECTOR 8P | 4099854230233 | 98 x 64 x 15 | Polyamid (PA)/Polyvinylchlorid (PVC) | White/Orange | 8 |
| TRUSYS FLEX FEED IN 5P | 4058075781931 | 39 x 27 x 14 | Polyamid (PA) | White | 9 |
| TRUSYS FLEX FEED IN 8P | 4058075781955 | 54 x 27 x 14 | Polyamid (PA) | White | 10 |
| TRUSYS FLEX FEED IN BOX 5P WT | 4058075781979 | 272 x 92 x 58 | Steel/Polycarbonate (PC) | White | 11 |
| TRUSYS FLEX FEED IN BOX 8P WT | 4058075781993 | 27 x 92 x 582 | Steel/Polycarbonate (PC) | White | 11 |
| TRUSYS FLEX FEED OUT BOX 5P WT | 4058075782013 | 296 x 92 x 58 | Steel/Polycarbonate (PC) | White | 12 |
| TRUSYS FLEX FEED OUT BOX 8P WT | 4058075782037 | 296 x 92 x 58 | Steel/Polycarbonate (PC) | White | 12 |

¹ Refer to www.ledvance.com/guarantee for precise conditions