

## Tubular cable lugs, Cu, F-series



- ▶ For fine and superfine stranded round conductors, e.g. to EN 60228 Cl. 5 and 6
- ▶ Pipe dimension adjusted for fine and superfine stranded conductors
- ▶ Special wide opening for the easy entry of fine conductors

### Characteristics

- To DIN EN 61373 class 1B vibration-tested
- Simple and safe connection due to flat contact surfaces and internal chamfer
- Reliable assignment owed to item designation on the cable lug

### Material

- Copper (EN13600)

### Surface

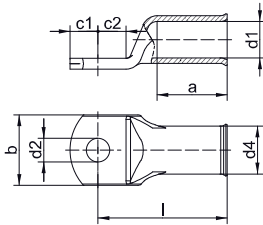
- Tin-plated to protect against corrosion

### Technical instructions

- Tool: see page 1.33
- You will find further information on the cable descriptions in the technical appendix, page i-6

### Additional information

- Possible as a special bright version on request. Part Number appendix „BK“
- 10 - 240 mm<sup>2</sup> UL-tested



Nominal cross section mm <sup>2</sup>	Size of bolt dia.	Part No.	Dimension mm								Weight/ 100 pcs. ~ kg	Packing unit/pcs
			d1	a	b	d2	d4	c1	c2	l		
10	M5	<b>702F5</b>	5.5	14	12	5.5	8.0	6.25	7.5	27	0.72	100
	M6	<b>702F6</b>	5.5	14	12	6.5	8.0	6.25	7.5	27	0.71	100
	M8	<b>702F8</b>	5.5	14	16	8.4	8.0	9.00	9.5	29	0.77	100
	M10	<b>702F10</b>	5.5	14	16	10.5	8.0	10.50	11.5	31	0.82	100
	M12	<b>702F12</b>	5.5	14	19	13.0	8.0	12.00	13.0	32	0.82	100
16	M5	<b>703F5</b>	6.6	15	13	5.5	9.5	6.25	7.5	30	1.10	100
	M6	<b>703F6</b>	6.6	15	13	6.4	9.5	6.25	7.5	30	1.07	100
	M8	<b>703F8</b>	6.6	15	16	8.4	9.5	10.00	10.0	32	1.21	100
	M10	<b>703F10</b>	6.6	15	17	10.5	9.5	12.00	12.0	34	1.28	100
	M12	<b>703F12</b>	6.6	15	19	13.0	9.5	13.00	13.0	35	1.28	100
25	M5	<b>704F5</b>	7.9	17	15.5	5.3	11.0	7.50	7.5	32	1.52	25
	M6	<b>704F6</b>	7.9	17	15.5	6.5	11.0	7.50	7.5	32	1.50	100
	M8	<b>704F8</b>	7.9	17	17	8.4	11.0	10.00	10.0	34	1.61	100
	M10	<b>704F10</b>	7.9	17	17	10.5	11.0	12.00	12.0	37	1.71	100
	M12	<b>704F12</b>	7.9	17	19	13.0	11.0	13.00	13.0	38	1.74	25
35	M6	<b>705F6</b>	9.2	19	17.5	6.4	12.4	7.50	7.5	35	1.91	100
	M8	<b>705F8</b>	9.2	19	18	8.4	12.4	10.00	10.0	37	2.08	100
	M10	<b>705F10</b>	9.2	19	18	10.5	12.4	12.00	12.0	40	2.24	100
	M12	<b>705F12</b>	9.2	19	19	13.0	12.4	13.00	13.0	41	2.22	25
	M14	<b>705F14</b>	9.2	19	21	15.0	12.4	14.50	14.5	43	2.41	25
50	M6	<b>706F6</b>	11.0	21	21	6.4	15.0	10.00	10.0	41	3.54	25
	M8	<b>706F8</b>	11.0	21	21	8.4	15.0	10.00	10.0	41	3.44	50
	M10	<b>706F10</b>	11.0	21	21	10.5	15.0	12.00	12.0	43	3.64	50
	M12	<b>706F12</b>	11.0	21	21	13.0	15.0	13.00	13.0	46	3.73	50
	M14	<b>706F14</b>	11.0	21	23	15.0	15.0	14.50	14.5	48	3.89	25
	M16	<b>706F16</b>	11.0	21	28	17.0	15.0	16.00	16.0	50	4.02	25

See next page



### Tubular cable lugs, Cu, F-series

Nominal cross section mm <sup>2</sup>	Size of bolt dia.	Part No.	Dimension mm								Weight/ 100 pcs. ~ kg	Packing unit/pcs
			d1	a	b	d2	d4	c1	c2	l		
70	M8	<b>707F8</b>	13.0	25	25	8.5	17.0	10.00	10.0	46	4.46	50
	M10	<b>707F10</b>	13.0	25	25	10.5	17.0	12.00	12.0	48	4.62	50
	M12	<b>707F12</b>	13.0	25	25	13.0	17.0	13.00	13.0	50	4.71	50
	M14	<b>707F14</b>	13.0	25	25	15.0	17.0	14.50	14.5	51.5	4.87	25
	M16	<b>707F16</b>	13.0	25	25	17.0	17.0	16.00	16.0	54	5.85	25
95	M8	<b>708F8</b>	14.5	26	28	8.5	19.0	12.00	12.0	52	6.35	25
	M10	<b>708F10</b>	14.5	26	28	10.5	19.0	12.00	12.0	52	6.23	50
	M12	<b>708F12</b>	14.5	26	28	13.0	19.0	13.00	13.0	53	6.31	50
	M14	<b>708F14</b>	14.5	26	28	15.0	19.0	14.50	14.5	55	6.46	25
	M16	<b>708F16</b>	14.5	26	28	17.0	19.0	16.00	16.0	56	6.56	50
120	M10	<b>709F10</b>	16.2	30	30	10.5	21.0	14.00	14.0	57	8.31	50
	M12	<b>709F12</b>	16.2	30	30	13.0	21.0	15.00	15.0	58	8.39	50
	M14	<b>709F14</b>	16.2	30	30	15.0	21.0	15.00	15.0	58	8.06	25
	M16	<b>709F16</b>	16.2	30	30	17.0	21.0	16.00	16.0	59	8.17	50
	M20	<b>709F20</b>	16.2	30	36	21.0	21.0	22.00	22.0	66	9.56	25
150	M10	<b>710F10</b>	18.0	32	34	10.5	23.0	15.00	16.0	64	10.91	10
	M12	<b>710F12</b>	18.0	32	34	13.0	23.0	16.00	17.0	65	10.89	25
	M14	<b>710F14</b>	18.0	32	34	15.0	23.0	18.00	19.0	67	11.42	10
	M16	<b>710F16</b>	18.0	32	34	17.0	23.0	19.00	20.0	68	11.30	10
	M20	<b>710F20</b>	18.0	32	40	21.0	23.0	21.00	22.0	70	11.36	10
185	M10	<b>711F10</b>	20.6	35	39	10.5	26.0	21.50	19.0	72	15.60	10
	M12	<b>711F12</b>	20.6	35	39	13.0	26.0	21.50	19.0	72	15.40	10
	M14	<b>711F14</b>	20.6	35	39	15.0	26.0	21.50	19.0	72	15.20	10
	M16	<b>711F16</b>	20.6	35	39	17.0	26.0	21.50	19.0	72	15.00	25
	M20	<b>711F20</b>	20.6	35	39	21.0	26.0	21.50	19.0	72	14.20	10
240	M10	<b>712F10</b>	23.1	44	41	10.5	28.0	16.00	17.0	80	16.50	10
	M12	<b>712F12</b>	23.1	44	42	13.0	28.0	16.00	17.0	80	16.30	10
	M14	<b>712F14</b>	23.1	44	41	15.0	28.0	19.00	20.0	83	16.80	10
	M16	<b>712F16</b>	23.1	44	41	17.0	28.0	19.00	20.0	83	16.71	25
	M20	<b>712F20</b>	23.1	44	41	21.0	28.0	21.00	22.0	85	17.12	10
300	M12	<b>713F12</b>	26.1	44	47	13.0	32.0	19.00	22.0	96	25.60	5
	M14	<b>713F14</b>	26.1	44	47	15.0	32.0	19.00	22.0	96	26.56	5
	M16	<b>713F16</b>	26.1	44	47	17.0	32.0	19.00	22.0	96	25.60	5
	M20	<b>713F20</b>	26.1	44	47	21.0	32.0	22.00	22.0	96	26.24	5