

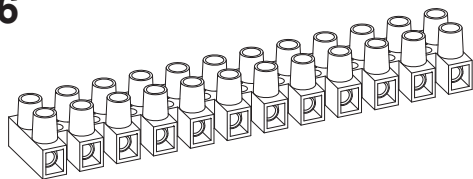
**Terminal Blocks
Klemrækker**

**Kopplingsplint
Standard**

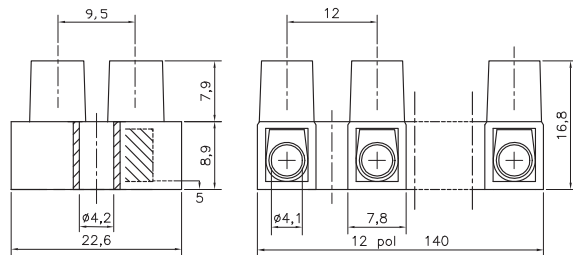
**Anschlußklemmen
Morsettiere a Vite**

EN 60998-2-1 CE

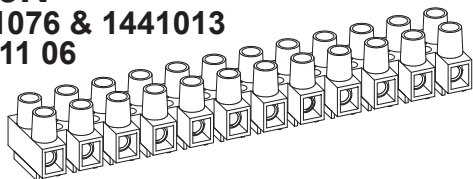
HE6



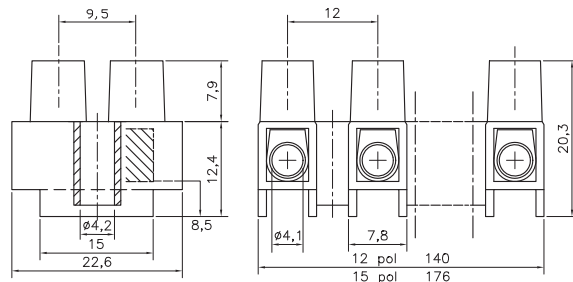
Description	Poles	Insert	Article No.
HE6 12-poles	12	Std.	0061N1210
HE6 WPR 12-poles	12	WPR	0061W1210
HE6 WPB 12-poles	12	WPB	0061R1210
HE6 2-poles	2	Std.	0061N0210



**HE6N
1441076 & 1441013
14 411 06**

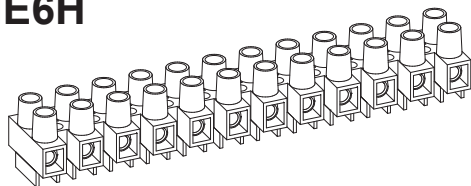


Description	Poles	Insert	Article No.
HE6N 12-poles	12	Std.	0063N1210
HE6N WPR 12-poles	12	WPR	0063W1210
HE6N BA 12-poles	12	BA	0063B1210
HE6N 3-poles	3	Std.	0063N0310
HE6N MS 12-poles	12	Std.	0063N1210MS

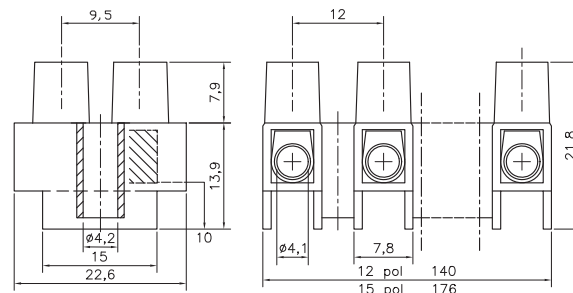


Stripping Length
Skalning
Abisolierlänge
7 - 7,5 mm

HE6H



Description	Poles	Insert	Article No.
HE6H 12-poles	12	Std.	0064N1210
HE6H WPR 12-poles	12	WPR	0064W1210
HE6H BA 12-poles	12	BA	0064B1210
HE6H WPB 4-poles	4	WPB	0064R0410



Torque:
Recommended 0,55 Nm
Max. 0,8 Nm

TECHNICAL DATA TEKNISKA DATA TECHNISCHE ANGABEN

Voltage	Fixing centres	Cable size
Märkspänning	Delningsmått	Area
Nennspannung	Rastermass	Nennquerschnitt

400 - 500 V	12 mm	4 - 6 mm²
--------------------	--------------	-----------------------------

UL HE6 300V / HE6H 600V	
Current	Working temperature
Märkström	Arbetstemperatur
Nennstrom	Dauertemperatur

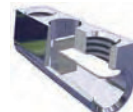
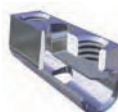
16 A/UL 30/40A	80° C / 100° C
-----------------------	-----------------------

Insert	Screw M3,5
Tinned Brass	Steel bluechromated
Hylsa	Skruv M3,5
Mässing förtent	Stål blåkromatiserad
Klemmkörper	Schraube M3,5
Messing verzint	Stahl blauchromatiert
AWG	

PA 66/6 V0	20-8/20-10
-------------------	-------------------

Approvals	Godkännanden	Genehmigungen
HE6	HE6N	HE6H
SEMKO	SEMKO	SEMKO
FI	FI	FI
CE	CE	CE
NEMKO	NEMKO	NEMKO
DEMKO	DEMKO	DEMKO
UL	UL	UL
	Canada	Canada

Standard	Type BA	Type WPR	Type WPB	HFM
Insert	Insert Barrier	Insert Wire protector	Insert Barrier Wire Protector	Hot Foil Marking
Inlägg	Inlägg Barriär	Inlägg Trådskydd	Inlägg Trådskydd Barriär	Märkning
Klemmkörper	Klemmkörper Barriere	Klemmkörper Drahtschutz	Klemmkörper Drahtschutz Barriere	Bezeichnung



The terminal block can be supplied with wire protector **WPR**, barrier inserts **BA** or with Barrier Wire Protector **WPB**, hot foil marking **HFM** or Brass Screws **MS**. Dessa plintar kan levereras med trådskydd **WPR**, barriär inlägg **BA** eller med Barriär Trådskydd **WPB**, samt Mässingskrav **MS** och märkning **HFM** direkt på plinten. Die Klemmen können auf Wunsch mit Drahtschutz **WPR**, Barriere **BA** oder Klemmkörper mit Barriere Drahtschutz **WPB** mit Messingschrauben **MS** und Bezeichnung **HFM** geliefert werden.