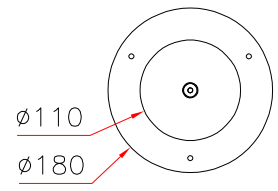
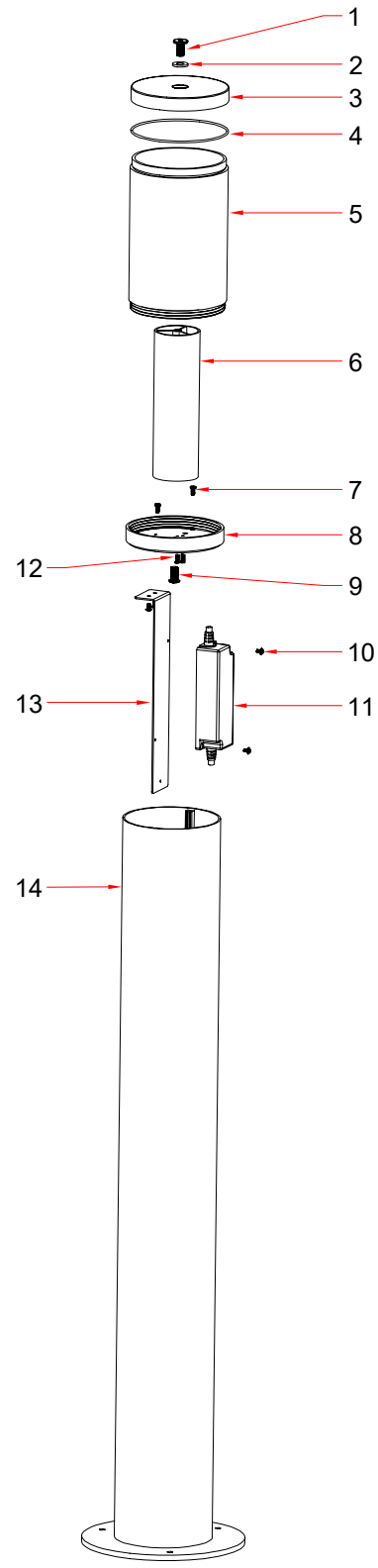


1	2	3	4
RevNo	Revision note	Date	Signature

A
B
C
D
E
F



No.	Component	Specification	Color	Material	Qty	Remark
1	torx screw	M8x16	antrasit	stainless steel	1	
2	washer	φ16x1.0	opal	silicon	1	
3	top cover	φ110x15	antrasit	ALU	1	
4	waterproof ring	φ110x2.0	opal	silicon	1	
5	diffuser	φ110x170	opal	PMMA	1	
6	PCB	φ50x165	white		1	
7	screw	M4x12		stainless steel	2	
8	connection plate	φ110x17	antrasit	ALU	1	
9	torx screw	M8x16		stainless steel	1	
10	screw	M3x6		stainless steel	2	
11	driver	117.7x41x27			1	
12	screw	M3x8		stainless steel	2	
13	driver bracket	270x41x25	antrasit	steel	1	
14	luminaire base	φ180xφ110x820	antrasit	stainless steel	1	

Itemref (项目名) 草坪灯	Material (材料)	Craft (工艺)	Unit (单位) mm	Scale (比例) 1:8	Date (日期) 2024/2/26
Designed by (设计)	Checked by (审核)	Size (尺寸) φ110*1000	Project Type (投影方法)		
ZHONGSHAN MIN KWONG ELECTRICAL Co., LTD 中山绵光电器有限公司		Pullert			
GZ Part No. (编号) 草坪灯-01		Edition (版本) A/1	Sheet (页码) 1/1		
Customer Part No.					

1 2 3 4