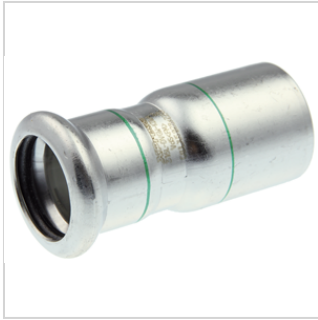


VSH XPress Stainless reducer (male x press)



group: R2707 **category:** fittings **product line:** VSH XPress Stainless

The VSH XPress R2707 is a stainless steel reducer with a press and tube end. By using VSH XPress in your piping installation you can install in a quick, easy and clean way. VSH XPress provides a complete piping system suitable for every conceivable application.

insert stop: stop edge for pipe end
provided with all relevant approvals
Leak Before Pressed-function
clear identification on fitting of material and dimension

applications

potable water, heating, cooling, steam, compressed air, solar energy, sprinkler, dry fire main, vacuum

segments

fire protection , commercial building , industry , shipbuilding

approvals

ACS , ATG , Bureau Veritas , CNBOP , DVGW Wasser , FG , FM , KIWA , Lloyds Register , LPCB , ÖVGW Wasser , PZH , QB (CSTBat) , RINA , RISE , SBSC , SETSCO , SINTEF , SPF , SVGW Wasser , TA-Luft , ÜA , VA (ETA) , VdS , WRAS

assortment

item number	size	dimensions	weight	packaging	gtin
6191121	Ø18x15	60x23x23 mm	0.04 kg	bag (10 pce)	08711985152524
6191130	Ø22x15	61x23x23 mm	0.05 kg	bag (10 pce)	08711985152548
6191141	Ø22x18	58x27x27 mm	0.05 kg	bag (10 pce)	08711985152562
6191152	Ø28x15	67x28x28 mm	0.06 kg	bag (10 pce)	08711985152586
6191163	Ø28x18	65x28x28 mm	0.06 kg	bag (10 pce)	08711985152609
6191174	Ø28x22	63x32x32 mm	0.06 kg	bag (10 pce)	08711985152623
6192221	Ø35x15	79x35x35 mm	0.08 kg	bag (5 pce)	08711985152647
6191185	Ø35x18	77x35x35 mm	0.08 kg	bag (5 pce)	08711985152661
6191196	Ø35x22	72x35x35 mm	0.08 kg	bag (5 pce)	08711985152685
6191207	Ø35x28	69x38x38 mm	0.09 kg	bag (5 pce)	08711985152708
6192230	Ø42x15	88x42x42 mm	0.1 kg	bag (5 pce)	08711985152722
6192241	Ø42x18	87x42x42 mm	0.11 kg	bag (5 pce)	08711985152746
6191218	Ø42x22	86x42x42 mm	0.11 kg	bag (4 pce)	08711985153248
6191229	Ø42x28	82x42x42 mm	0.12 kg	bag (4 pce)	08711985152777
6191231	Ø42x35	77x45x45 mm	0.12 kg	bag (4 pce)	08711985152791
6192252	Ø54x15	99x54x54 mm	0.14 kg	bag (4 pce)	08711985152814
6192263	Ø54x18	98x54x54 mm	0.15 kg	bag (4 pce)	08711985152838
6191240	Ø54x22	100x54x54 mm	0.15 kg	bag (4 pce)	08711985152852

item number	size	dimensions	weight	packaging	gtin
6191251	Ø54x28	97x54x54 mm	0.16 kg	bag (4 pce)	08711985152876
6191262	Ø54x35	94x54x54 mm	0.16 kg	bag (4 pce)	08711985152890
6191273	Ø54x42	95x54x54 mm	0.18 kg	bag (4 pce)	08711985152913
6204211	Ø76.1x42	151x76x76 mm	0.48 kg	bag (4 pce)	08711985249248
6204220	Ø76.1x54	140x76x76 mm	0.46 kg	bag (4 pce)	08711985249255
6204231	Ø88.9x54	156x89x89 mm	0.6 kg	bag (4 pce)	08711985249262
6204242	Ø88.9x76.1	156x94x94 mm	0.66 kg	bag (4 pce)	08711985249279
6204253	Ø108x54	204x108x108 mm	0.89 kg	bag (2 pce)	08711985249286
6204264	Ø108x76.1	196x108x108 mm	0.99 kg	bag (2 pce)	08711985249293
6204275	Ø108x88.9	190x109x109 mm	1 kg	bag (2 pce)	08711985249309

specifications - characteristics

color	silver
materials	stainless steel (Stainless steel 316L (1.4404))
finishing	none
shape	straight, reducer
connection type	tube end, press (M)
sealing	EPDM

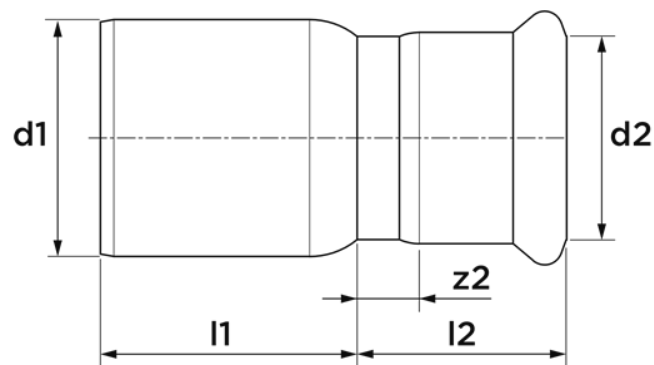
specifications - general

product group	ittings
ETIM class	EC003024 Fitting with 2 connections
HS code	73072980
brand	VSH
series	XPress Stainless
type	R2707
UNSPS	40173607

dimensions

item number	size	d1	DN1	l1	z1	d2	DN2	l2	z2
6191121	Ø18x15	18.0	DN15	28	8	15.0	DN12	27	7
6191130	Ø22x15	22.0	DN20	33	12	15.0	DN12	28	8
6191141	Ø22x18	22.0	DN20	30	9	18.0	DN15	28	8
6191152	Ø28x15	28.0	DN25	40	17	15.0	DN12	28	8
6191163	Ø28x18	28.0	DN25	38	15	18.0	DN15	28	8
6191174	Ø28x22	28.0	DN25	34	11	22.0	DN20	29	8
6192221	Ø35x15	35.0	DN32	47	21	15.0	DN12	32	12
6191185	Ø35x18	35.0	DN32	46	20	18.0	DN15	32	12
6191196	Ø35x22	35.0	DN32	42	16	22.0	DN20	29	8
6191207	Ø35x28	35.0	DN32	38	12	28.0	DN25	31	8

item number	size	d1	DN1	l1	z1	d2	DN2	l2	z2
6192230	Ø42x15	42.0	DN40	57	27	15.0	DN12	32	12
6192241	Ø42x18	42.0	DN40	55	25	18.0	DN15	32	12
6191218	Ø42x22	42.0	DN40	53	23	22.0	DN20	33	12
6191229	Ø42x28	42.0	DN40	51	21	28.0	DN25	31	8
6191231	Ø42x35	42.0	DN40	42	12	35.0	DN32	34	8
6192252	Ø54x15	54.0	DN50	68	33	15.0	DN12	32	12
6192263	Ø54x18	54.0	DN50	69	33	18.0	DN15	29	12
6191240	Ø54x22	54.0	DN50	66	31	22.0	DN20	33	12
6191251	Ø54x28	54.0	DN50	62	27	28.0	DN25	34	11
6191262	Ø54x35	54.0	DN50	60	25	35.0	DN32	34	8
6191273	Ø54x42	54.0	DN50	55	20	42.0	DN40	40	10
6204211	Ø76.1x42	76.1	DN65	72	17	42.0	DN40	79	49
6204220	Ø76.1x54	76.1	DN65	98	43	54.0	DN50	42	7
6204231	Ø88.9x54	88.9	DN80	114	51	54.0	DN50	42	7
6204242	Ø88.9x76.1	88.9	DN80	88	25	76.1	DN65	68	13
6204253	Ø108x54	108.0	DN100	138	61	54.0	DN50	66	31
6204264	Ø108x76.1	108.0	DN100	127	50	76.1	DN65	69	14
6204275	Ø108x88.9	108.0	DN100	113	36	88.9	DN80	77	14



item number	carbon footprint (A1-A3) cradle-to-gate	carbon footprint (A-C) embodied carbon	carbon footprint (A-D) cradle-to-cradle	data source
item number	carbon footprint (A1-A3) cradle-to-gate	carbon footprint (A-C) embodied carbon	carbon footprint (A-D) cradle-to-cradle	data source
6191121	0.17kgCO ₂ e	0.18kgCO ₂ e	0.14kgCO ₂ e	EPD
6191130	0.2kgCO ₂ e	0.21kgCO ₂ e	0.16kgCO ₂ e	EPD
6191141	0.2kgCO ₂ e	0.21kgCO ₂ e	0.16kgCO ₂ e	EPD
6191152	0.24kgCO ₂ e	0.25kgCO ₂ e	0.19kgCO ₂ e	EPD
6191163	0.24kgCO ₂ e	0.25kgCO ₂ e	0.19kgCO ₂ e	EPD
6191174	0.28kgCO ₂ e	0.29kgCO ₂ e	0.22kgCO ₂ e	EPD
6192221	0.34kgCO ₂ e	0.35kgCO ₂ e	0.27kgCO ₂ e	EPD
6191185	0.34kgCO ₂ e	0.36kgCO ₂ e	0.27kgCO ₂ e	EPD
6191196	0.37kgCO ₂ e	0.39kgCO ₂ e	0.3kgCO ₂ e	EPD
6191207	0.4kgCO ₂ e	0.41kgCO ₂ e	0.32kgCO ₂ e	EPD
6192230	0.45kgCO ₂ e	0.47kgCO ₂ e	0.36kgCO ₂ e	EPD
6192241	0.47kgCO ₂ e	0.49kgCO ₂ e	0.37kgCO ₂ e	EPD
6191218	0.48kgCO ₂ e	0.5kgCO ₂ e	0.38kgCO ₂ e	EPD
6191229	0.52kgCO ₂ e	0.54kgCO ₂ e	0.41kgCO ₂ e	EPD
6191231	0.53kgCO ₂ e	0.55kgCO ₂ e	0.42kgCO ₂ e	EPD
6192252	0.64kgCO ₂ e	0.66kgCO ₂ e	0.51kgCO ₂ e	EPD
6192263	0.66kgCO ₂ e	0.69kgCO ₂ e	0.52kgCO ₂ e	EPD
6191240	0.68kgCO ₂ e	0.71kgCO ₂ e	0.54kgCO ₂ e	EPD
6191251	0.71kgCO ₂ e	0.74kgCO ₂ e	0.56kgCO ₂ e	EPD
6191262	0.72kgCO ₂ e	0.75kgCO ₂ e	0.57kgCO ₂ e	EPD
6191273	0.8kgCO ₂ e	0.84kgCO ₂ e	0.64kgCO ₂ e	EPD
6204211	2.13kgCO ₂ e	2.22kgCO ₂ e	1.7kgCO ₂ e	EPD
6204220	2.04kgCO ₂ e	2.13kgCO ₂ e	1.63kgCO ₂ e	EPD
6204231	2.64kgCO ₂ e	2.76kgCO ₂ e	2.11kgCO ₂ e	EPD
6204242	2.93kgCO ₂ e	3.05kgCO ₂ e	2.33kgCO ₂ e	EPD
6204253	3.96kgCO ₂ e	4.13kgCO ₂ e	3.16kgCO ₂ e	EPD
6204264	4.4kgCO ₂ e	4.59kgCO ₂ e	3.5kgCO ₂ e	EPD
6204275	4.46kgCO ₂ e	4.65kgCO ₂ e	3.55kgCO ₂ e	EPD