

VSH XPress Stainless T-piece reduced (3 x press)



group: R2715 **category:** fittings **product line:** VSH XPress Stainless

The VSH XPress R2715 is a stainless steel reduced T-piece with 3 press ends. By using VSH XPress in your piping installation you can install in a quick, easy and clean way. VSH XPress provides a complete piping system suitable for every conceivable application.

insert stop: stop edge for pipe end
provided with all relevant approvals
Leak Before Pressed-function
clear identification on fitting of material and dimension

applications

potable water, heating, cooling, steam, compressed air, solar energy, sprinkler, dry fire main, vacuum

segments

fire protection , commercial building , industry , shipbuilding

approvals

ACS , ATG , Bureau Veritas , CNBOP , DVGW Wasser , FG , FM , KIWA , Lloyds Register , LPCB , ÖVGW Wasser , PZH , QB (CSTBat) , RINA , RISE , SBSC , SETSCO , SINTEF , SPF , SVGW Wasser , TA-Luft , ÜA , VA (ETA) , VdS , WRAS

assortment

item number	size	dimensions	weight	packaging	gtin
6191361	18x18x15	73x52x27 mm	0.08 kg	bag (10 pce)	08711985155709
6191383	22x22x15	79x54x32 mm	0.1 kg	bag (10 pce)	08711985155747
6191394	22x22x18	79x56x38 mm	0.1 kg	bag (10 pce)	08711985155761
6191416	28x28x15	89x57x38 mm	0.13 kg	bag (5 pce)	08711985155808
6191427	28x28x18	89x59x38 mm	0.13 kg	bag (10 pce)	08711985155822
6191438	28x28x22	89x62x38 mm	0.14 kg	bag (5 pce)	08711985155846
6191451	35x35x15	102x61x45 mm	0.17 kg	bag (5 pce)	08711985155884
6191460	35x35x18	102x62x45 mm	0.17 kg	bag (5 pce)	08711985155907
6191471	35x35x22	102x66x45 mm	0.18 kg	bag (5 pce)	08711985155921
6191482	35x35x28	102x71x45 mm	0.19 kg	bag (5 pce)	08711985155945
6191504	42x42x22	119x68x54 mm	0.24 kg	bag (4 pce)	08711985155983
6191515	42x42x28	119x73x54 mm	0.25 kg	bag (4 pce)	08711985162929
6191526	42x42x35	119x80x54 mm	0.26 kg	bag (4 pce)	08711985156027
6191548	54x54x22	141x74x65 mm	0.35 kg	bag (2 pce)	08711985156065
6191559	54x54x28	141x79x65 mm	0.36 kg	bag (2 pce)	08711985156089
6191561	54x54x35	141x86x65 mm	0.37 kg	bag (2 pce)	08711985156102
6191570	54x54x42	141x84x65 mm	0.39 kg	bag (2 pce)	08711985156126
6204341	76.1x76.1x22	232x83x94 mm	0.95 kg	bag (2 pce)	08711985249460

item number	size	dimensions	weight	packaging	gtin
6204352	76.1x76.1x28	232x95x94 mm	1.02 kg	bag (2 pce)	08711985249477
6204363	76.1x76.1x35	232x110x94 mm	1.03 kg	bag (2 pce)	08711985249484
6204374	76.1x76.1x42	232x133x94 mm	0.99 kg	bag (2 pce)	08711985249491
6204385	76.1x76.1x54	232x83x94 mm	1.08 kg	bag (2 pce)	08711985249507
6204396	88.9x88.9x22	262x92x109 mm	1.34 kg	bag (2 pce)	08711985249514
6204407	88.9x88.9x28	262x95x109 mm	1.35 kg	bag (2 pce)	08711985249521
6204418	88.9x88.9x35	262x105x109 mm	1.36 kg	bag (2 pce)	08711985249538
6204429	88.9x88.9x42	262x112x109 mm	1.38 kg	bag (2 pce)	08711985249545
6204431	88.9x88.9x54	262x126x109 mm	1.39 kg	bag (2 pce)	08711985249552
6204440	88.9x88.9x76.1	262x163x109 mm	1.6 kg	bag (2 pce)	08711985249569
6204451	108x108x22	312x101x133 mm	1.93 kg	bag (2 pce)	08711985249576
6204462	108x108x28	312x107x133 mm	1.95 kg	bag (2 pce)	08711985249583
6204473	108x108x35	312x116x133 mm	1.97 kg	bag (2 pce)	08711985249590
6204484	108x108x42	312x123x133 mm	1.9 kg	bag (2 pce)	08711985249606
6204495	108x108x54	312x135x133 mm	1.97 kg	bag (2 pce)	08711985249613
6204506	108x108x76.1	312x172x133 mm	2.15 kg	bag (2 pce)	08711985249620
6204517	108x108x88.9	312x190x133 mm	2.26 kg	bag (2 pce)	08711985249637

specifications - characteristics

color	silver
materials	stainless steel (Stainless steel 316L (1.4404))
finishing	none
shape	T-piece, reducer (90°)
connection type	press (M), Press (M)
sealing	EPDM

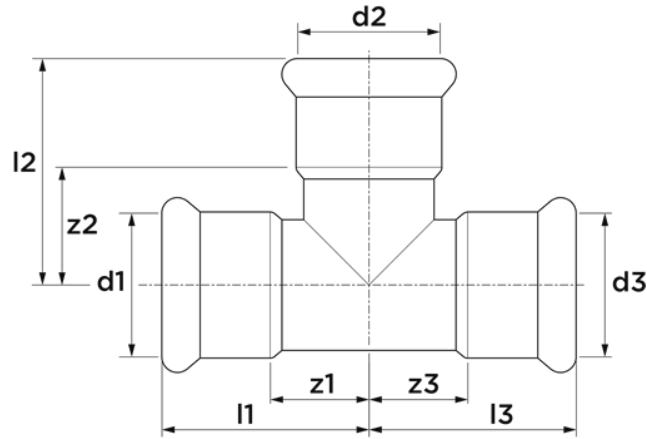
specifications - general

product group	ittings
ETIM class	ECO03025 Fitting with 3 connections
HS code	73072980
brand	VSH
series	XPress Stainless
type	R2715
UNSPS	40174607

dimensions

item number	size	d1	DN1	l1	z1	d2	DN2	l2	z2	d3	DN3	l3	z3
6191361	18x18x15	18.0	DN15	37	17	15.0	DN12	41	21	18.0	DN15	37	17
6191383	22x22x15	22.0	DN20	40	19	15.0	DN12	43	23	22.0	DN20	40	19
6191394	22x22x18	22.0	DN20	40	17	18.0	DN15	43	23	22.0	DN20	40	17

item number	size	d1	DN1	l1	z1	d2	DN2	l2	z2	d3	DN3	l3	z3
6191416	28x28x15	28.0	DN25	45	22	15.0	DN12	46	26	28.0	DN25	45	22
6191427	28x28x18	28.0	DN25	45	22	18.0	DN15	46	26	28.0	DN25	45	22
6191438	28x28x22	28.0	DN25	45	22	22.0	DN20	47	26	28.0	DN25	45	22
6191451	35x35x15	35.0	DN32	51	25	15.0	DN12	49	29	35.0	DN32	51	25
6191460	35x35x18	35.0	DN32	51	25	18.0	DN15	49	29	35.0	DN32	51	25
6191471	35x35x22	35.0	DN32	51	25	22.0	DN20	50	29	35.0	DN32	51	25
6191482	35x35x28	35.0	DN32	51	25	28.0	DN25	52	29	35.0	DN32	51	25
6191504	42x42x22	42.0	DN40	60	30	22.0	DN20	53	32	42.0	DN40	60	30
6191515	42x42x28	42.0	DN40	60	30	28.0	DN25	55	32	42.0	DN40	60	30
6191526	42x42x35	42.0	DN40	60	30	35.0	DN32	58	32	42.0	DN40	60	30
6191548	54x54x22	54.0	DN50	71	36	22.0	DN20	59	38	54.0	DN50	71	36
6191559	54x54x28	54.0	DN50	71	36	28.0	DN25	61	38	54.0	DN50	71	36
6191561	54x54x35	54.0	DN50	71	36	35.0	DN32	64	38	54.0	DN50	71	36
6191570	54x54x42	54.0	DN50	71	36	42.0	DN40	58	28	54.0	DN50	71	36
6204341	76.1x76.1x22	76.1	DN65	116	61	22.0	DN20	68	45	76.1	DN65	116	61
6204352	76.1x76.1x28	76.1	DN65	116	61	28.0	DN25	71	47	76.1	DN65	116	61
6204363	76.1x76.1x35	76.1	DN65	116	61	35.0	DN32	75	48	76.1	DN65	116	61
6204374	76.1x76.1x42	76.1	DN65	116	61	42.0	DN40	79	47	76.1	DN65	116	61
6204385	76.1x76.1x54	76.1	DN65	116	61	54.0	DN50	80	43	76.1	DN65	116	61
6204396	88.9x88.9x22	88.9	DN80	131	68	22.0	DN20	76	53	88.9	DN80	131	68
6204407	88.9x88.9x28	88.9	DN80	131	68	28.0	DN25	76	52	88.9	DN80	131	68
6204418	88.9x88.9x35	88.9	DN80	131	68	35.0	DN32	83	56	88.9	DN80	131	68
6204429	88.9x88.9x42	88.9	DN80	131	68	42.0	DN40	85	53	88.9	DN80	131	68
6204431	88.9x88.9x54	88.9	DN80	131	68	54.0	DN50	93	56	88.9	DN80	131	68
6204440	88.9x88.9x76.1	88.9	DN80	131	68	76.1	DN65	116	61	88.9	DN80	131	68
6204451	108x108x22	108.0	DN100	156	79	22.0	DN20	85	62	108.0	DN100	156	79
6204462	108x108x28	108.0	DN100	156	79	28.0	DN25	88	64	108.0	DN100	156	79
6204473	108x108x35	108.0	DN100	156	79	35.0	DN32	94	67	108.0	DN100	156	79
6204484	108x108x42	108.0	DN100	156	79	42.0	DN40	96	64	108.0	DN100	156	79
6204495	108x108x54	108.0	DN100	156	79	54.0	DN50	102	65	108.0	DN100	156	79
6204506	108x108x76.1	108.0	DN100	156	79	76.1	DN65	125	70	108.0	DN100	156	79
6204517	108x108x88.9	108.0	DN100	156	79	88.9	DN80	135	72	108.0	DN100	156	79



sustainability

item number	carbon footprint (A1-A3) cradle-to-gate	carbon footprint (A-C) embodied carbon	carbon footprint (A-D) cradle-to-cradle	data source
6191361	0.35kgCO ₂ e	0.36kgCO ₂ e	0.28kgCO ₂ e	EPD
6191383	0.42kgCO ₂ e	0.44kgCO ₂ e	0.34kgCO ₂ e	EPD
6191394	0.44kgCO ₂ e	0.46kgCO ₂ e	0.35kgCO ₂ e	EPD
6191416	0.56kgCO ₂ e	0.58kgCO ₂ e	0.45kgCO ₂ e	EPD
6191427	0.58kgCO ₂ e	0.6kgCO ₂ e	0.46kgCO ₂ e	EPD
6191438	0.62kgCO ₂ e	0.64kgCO ₂ e	0.49kgCO ₂ e	EPD
6191451	0.76kgCO ₂ e	0.79kgCO ₂ e	0.61kgCO ₂ e	EPD
6191460	0.77kgCO ₂ e	0.81kgCO ₂ e	0.62kgCO ₂ e	EPD
6191471	0.81kgCO ₂ e	0.85kgCO ₂ e	0.65kgCO ₂ e	EPD
6191482	0.84kgCO ₂ e	0.88kgCO ₂ e	0.67kgCO ₂ e	EPD
6191504	1.08kgCO ₂ e	1.13kgCO ₂ e	0.86kgCO ₂ e	EPD
6191515	1.12kgCO ₂ e	1.16kgCO ₂ e	0.89kgCO ₂ e	EPD
6191526	1.17kgCO ₂ e	1.22kgCO ₂ e	0.93kgCO ₂ e	EPD
6191548	1.56kgCO ₂ e	1.62kgCO ₂ e	1.24kgCO ₂ e	EPD
6191559	1.58kgCO ₂ e	1.65kgCO ₂ e	1.26kgCO ₂ e	EPD
6191561	1.64kgCO ₂ e	1.71kgCO ₂ e	1.31kgCO ₂ e	EPD
6191570	1.75kgCO ₂ e	1.82kgCO ₂ e	1.39kgCO ₂ e	EPD
6204341	4.24kgCO ₂ e	4.42kgCO ₂ e	3.38kgCO ₂ e	EPD
6204352	4.53kgCO ₂ e	4.73kgCO ₂ e	3.61kgCO ₂ e	EPD

item number	carbon footprint (A1-A3) cradle-to-gate	carbon footprint (A-C) embodied carbon	carbon footprint (A-D) cradle-to-cradle	data source
6204363	4.59kgCO ₂ e	4.79kgCO ₂ e	3.66kgCO ₂ e	EPD
6204374	4.41kgCO ₂ e	4.6kgCO ₂ e	3.52kgCO ₂ e	EPD
6204385	4.81kgCO ₂ e	5.01kgCO ₂ e	3.83kgCO ₂ e	EPD
6204396	5.95kgCO ₂ e	6.2kgCO ₂ e	4.74kgCO ₂ e	EPD
6204407	5.99kgCO ₂ e	6.25kgCO ₂ e	4.78kgCO ₂ e	EPD
6204418	6.04kgCO ₂ e	6.3kgCO ₂ e	4.81kgCO ₂ e	EPD
6204429	6.14kgCO ₂ e	6.4kgCO ₂ e	4.89kgCO ₂ e	EPD
6204431	6.19kgCO ₂ e	6.45kgCO ₂ e	4.93kgCO ₂ e	EPD
6204440	7.09kgCO ₂ e	7.39kgCO ₂ e	5.65kgCO ₂ e	EPD
6204451	8.58kgCO ₂ e	8.95kgCO ₂ e	6.84kgCO ₂ e	EPD
6204462	8.67kgCO ₂ e	9.04kgCO ₂ e	6.91kgCO ₂ e	EPD
6204473	8.74kgCO ₂ e	9.11kgCO ₂ e	6.96kgCO ₂ e	EPD
6204484	8.43kgCO ₂ e	8.79kgCO ₂ e	6.72kgCO ₂ e	EPD
6204495	8.74kgCO ₂ e	9.11kgCO ₂ e	6.96kgCO ₂ e	EPD
6204506	9.54kgCO ₂ e	9.95kgCO ₂ e	7.6kgCO ₂ e	EPD
6204517	10.02kgCO ₂ e	10.45kgCO ₂ e	7.98kgCO ₂ e	EPD