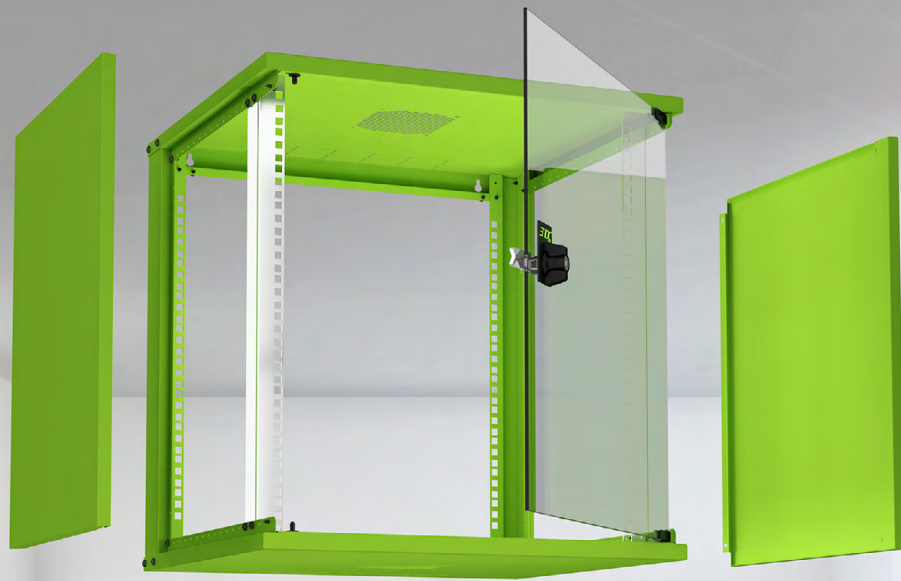




THE ENOC W3

EASY TO INSTALL
EASY TO ACCESS
EASY TO COLOUR



EASY ACCESS

Installation and service
is made easy from 3 sides

MANY SIZES

Heights: 6, 9, 12, 15 & 21 HU
Depths: 500 or 600 mm
New 400 mm is available 01.09.2016

COLOURFUL

Standard: Beige or black
Optional: RAL colours

The Enoc W3 is our new serie of wall cabinets with a smart and functional design for small networks. The front and two detachable sides ensure a quick and cost effective installment. And afterwards it makes service even easier. At Enoc we are committed to finding the solution that best fits you. That is what we call "The Enoc Way".



SEE MORE AT ENOCSYSTEM.COM

ENOC



TECHNICAL INFORMATION

ENOC W3 WALL CABINET

SIZES

Heights: 6, 9, 12, 15 & 21 HU

Depths: 500 or 600 mm

New 400 mm is available 01.09.2016

MAXIMUM STATIC LOAD

- W3, 6 HU, 30 kg
- W3, 9 HU, 30 kg
- W3, 12 HU, 35 kg
- W3, 15 HU, 35 kg
- W3, 21 HU, 40 kg

EASY ACCESS

Installation and service is made easy from 3 sides

TECHNICAL INFORMATION

- Made of bent sheet steel
- Sheet steel sides, detachable
- Door opening angle 110°
- Surface treatment, textured Enoc System beige or black RAL 9005
- Glass door is made of safety glass
- Passive ventilation in top and bottom
- Top and bottom plates have knock-outs for cable glands. Supplied with edging strip for cable protection
- One pair of 19" profiles (482.6 mm) pre-fitted 80 mm in from the enclosure front, can be repositioned at 25 mm intervals through depth of the enclosure
- 19" hole pattern in rear uprights for mounting accessories
- Extra pair of 19" profiles available as accessory
- Keyholes for wall mounting
- Open back, the back panel as accessory
- Other RAL colours on request

W3 BEIGE

TYPE DESIGNATION	ART.NO.	EAN-NUMBER	WxDxH (mm)	MAX. STATIC LOAD	HU
W3 6-4	57401	7330701103001	550x400x314	30 kg	6
W3 9-4	57402	7330701103018	550x400x448	30 kg	9
W3 12-4	57403	7330701103025	550x400x581	35 kg	12
W3 15-4	57404	7330701103032	550x400x714	35 kg	15
W3 6-5	57411	7330701103100	550x500x314	30 kg	6
W3 9-5	57412	7330701103117	550x500x448	30 kg	9
W3 12-5	57413	7330701103124	550x500x581	35 kg	12
W3 15-5	57414	7330701103131	550x500x714	35 kg	15
W3 21-5	57416	7330701103155	550x500x979	40 kg	21
W3 6-6	57421	7330701103209	550x600x314	30 kg	6
W3 9-6	57422	7330701103216	550x600x448	30 kg	9
W3 12-6	57423	7330701103223	550x600x581	35 kg	12
W3 15-6	57424	7330701103230	550x600x714	35 kg	15
W3 21-6	57426	7330701103254	550x600x979	40 kg	21

W3 BLACK

TYPE DESIGNATION	ART.NO.	EAN-NUMBER	WxDxH (mm)	MAX. STATIC LOAD	HU
W3 6-4-S	57431	7330701103308	550x400x314	30 kg	6
W3 9-4-S	57432	7330701103315	550x400x448	30 kg	9
W3 12-4-S	57433	7330701103322	550x400x581	35 kg	12
W3 15-4-S	57434	7330701103339	550x400x714	35 kg	15
W3 6-5-S	57441	7330701103407	550x500x314	30 kg	6
W3 9-5-S	57442	7330701103414	550x500x448	30 kg	9
W3 12-5-S	57443	7330701103421	550x500x581	35 kg	12
W3 15-5-S	57444	7330701103438	550x500x714	35 kg	15
W3 21-5-S	57446	7330701103452	550x500x979	40 kg	21
W3 6-6-S	57451	7330701103506	550x600x314	30 kg	6
W3 9-6-S	57452	7330701103513	550x600x448	30 kg	9
W3 12-6-S	57453	7330701103520	550x600x581	35 kg	12
W3 15-6-S	57454	7330701103537	550x600x714	35 kg	15
W3 21-6-S	57456	7330701103551	550x600x979	40 kg	21